

PROPERTY SURVEY

FOR CON-VEY KEYSTONE, INC.
A PORTION OF BLOCKS 26 & 29 RIVERSIDE ADDITION TO ROSEBURG
NE 1/4 OF SECTION 13, TOWNSHIP 27 SOUTH, RANGE 6 WEST OF THE WILLAMETTE MERIDIAN
DECEMBER 2000

FILED

Date: 12/13/2000 By: JP
This survey consists of:
Map: M136-23
Narrative:
Corner Rep:

DOUGLAS COUNTY
SURVEYOR

NARRATIVE:

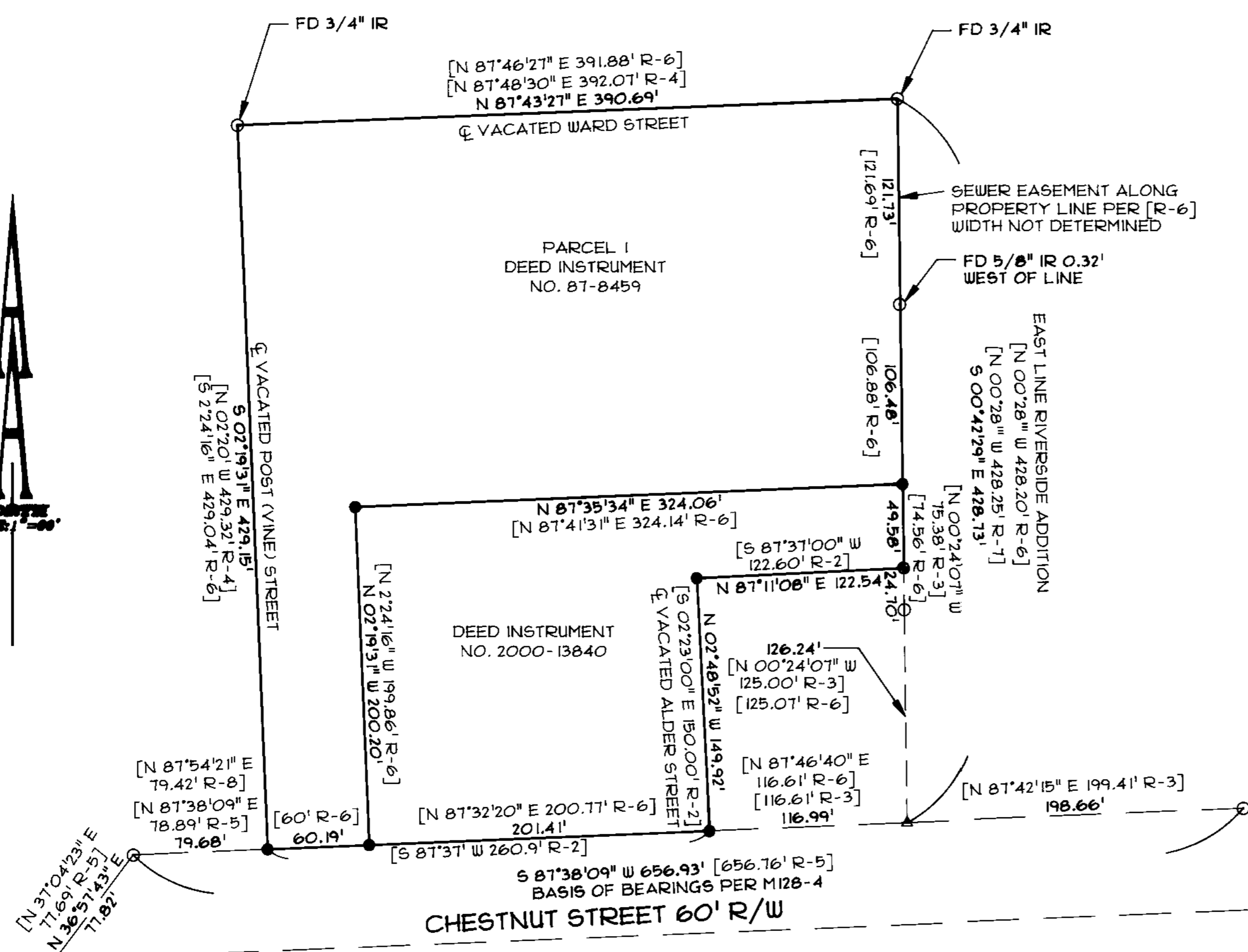
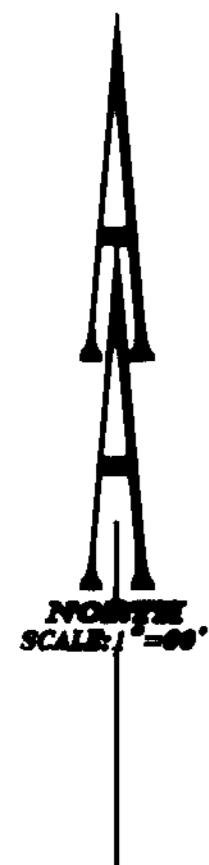
THE PURPOSE OF THIS SURVEY IS TO MONUMENT THE CORNERS OF THE PROPERTY DESCRIBED IN DEED INSTRUMENT NO. 2000-13840 AND PARCEL 1 OF DEED INSTRUMENT NO. 87-8459. THE NORTH RIGHT OF WAY LINE OF CHESTNUT STREET WAS DETERMINED BY HOLDING THE MONUMENTS FOUND ALONG SAID LINE. THE EAST LINE OF THE SUBJECT PROPERTY WAS DETERMINED BY HOLDING THE MONUMENT FOUND AT THE NORTHEAST CORNER AND THE MOST SOUTHERLY MONUMENT FOUND ALONG SAID LINE. THIS LINE WAS THEN EXTENDED TO INTERSECT WITH THE ESTABLISHED RIGHT OF WAY LINE. THE POSITIONS OF THE REMAINING MONUMENTS SET ALONG THE NORTH RIGHT OF WAY LINE WERE DETERMINED BY PROPORTIONING THE REMAINING RECORD DISTANCES ALONG SAID LINE. THE SOUTHWEST CORNER OF PARCEL 1 OF DEED INSTRUMENT NO. 87-8459 WAS DETERMINED BY PROPORTIONING THE RECORD DISTANCES ALONG THE ESTABLISHED EAST LINE. THE WEST LINE OF SAID PARCEL WAS DETERMINED BY HOLDING THE MONUMENT FOUND AT THE NORTHWEST CORNER AND THE POSITION OF THE SOUTHWEST CORNER CALCULATED ALONG THE RIGHT OF WAY. THE INTERIOR CORNER OF SAID PARCEL WAS DETERMINED BY STRIKING A LINE PARALLEL TO THE WEST LINE FROM THE POSITION CALCULATED ALONG THE RIGHT OF WAY LINE AND INTERSECTING SAID LINE WITH A LINE FROM THE CALCULATED SOUTHWEST CORNER OF SAID PARCEL. THE EAST LINE OF DEED INSTRUMENT NO. 2000-13840 WAS DETERMINED BY HOLDING THE MONUMENT SET AT THE SOUTHWEST CORNER OF PARCEL 1 OF DEED INSTRUMENT NO. 87-8459 AND THE MONUMENT FOUND ALONG THE EAST LINE. THE SOUTH LINE OF SAID DEED INSTRUMENT WAS DETERMINED BY HOLDING THE MONUMENTS SET ALONG THE NORTH RIGHT OF WAY LINE OF CHESTNUT STREET. THE REMAINING TWO LINES OF SAID DEED INSTRUMENT WERE DETERMINED BY FITTING LINES OF THE RECORD BEARINGS AND DISTANCES BETWEEN THE MONUMENT FOUND ON THE EAST LINE AND THE MONUMENT SET ON THE RIGHT OF WAY LINE.

LEGEND:

- Set 5/8" x 30" Iron Rod with Yellow Plastic Cap marked "AA SURVEYING INC."
- Found 5/8" Iron Rod, unless otherwise noted
- Found 1" Bolt/Nut
- △ Calculated Point
- [] Embraces Record Data as indicated

RECORD INFORMATION:

- [R-1] VOL 1, PAGE 10 (RIVERSIDE ADDITION)
- [R-2] M23-1
- [R-3] M53-14
- [R-4] M30-3
- [R-5] M128-4
- [R-6] M39-69
- [R-7] M31-40
- [R-8] M122-8



AA* 228 | 99 | 228 | 99 | Property Survey.dwg | DECEMBER 1, 2000

MAP FILE M136-23

REGISTERED
PROFESSIONAL
LAND SURVEYOR

Ronald A. Quimby

OREGON
JULY 14, 1978
RONALD A. QUIMBY
1854
EXP. DATE: 12-31-00

AA

SURVEYING & ENGINEERING, INC.
ENGINEERING • SURVEYING • PLANNING

3076 NE DIAMOND LAKE BLVD.
ROSEBURG, OREGON 97470
TEL (541)672-2096
FAX (541)672-0611