

LAND SURVEY of LOT LINE ADJUSTMENT

LOT 17, BLOCK 2, CLARA ADDITION, CITY of GLENDALE, in the
NE 1/4, NW 1/4, Sec. 4, T. 33 S., R. 6 W., W.M., DOUGLAS COUNTY, ORE.

BY: Superior Lumber Co., Ronald Brandt, L.S. 841.

FOR: Superior Lumber Co., and Glendale School District, Glendale, Oregon.

DATES: June 15 - Oct. 28, 2000.

SOUTH 1/4 CORNER
SECTION 33, T. 32 S., R. 6 W., W.M.
FOUND BOAT SPIKE
N 89° 49' E, 219.29'
FLUSH, UNDER GUARD RAIL
RE-SET BY DOUGLAS COUNTY
LAND SURVEYOR.
(N 89° 43' 43" E, 219.24')
M 49-21

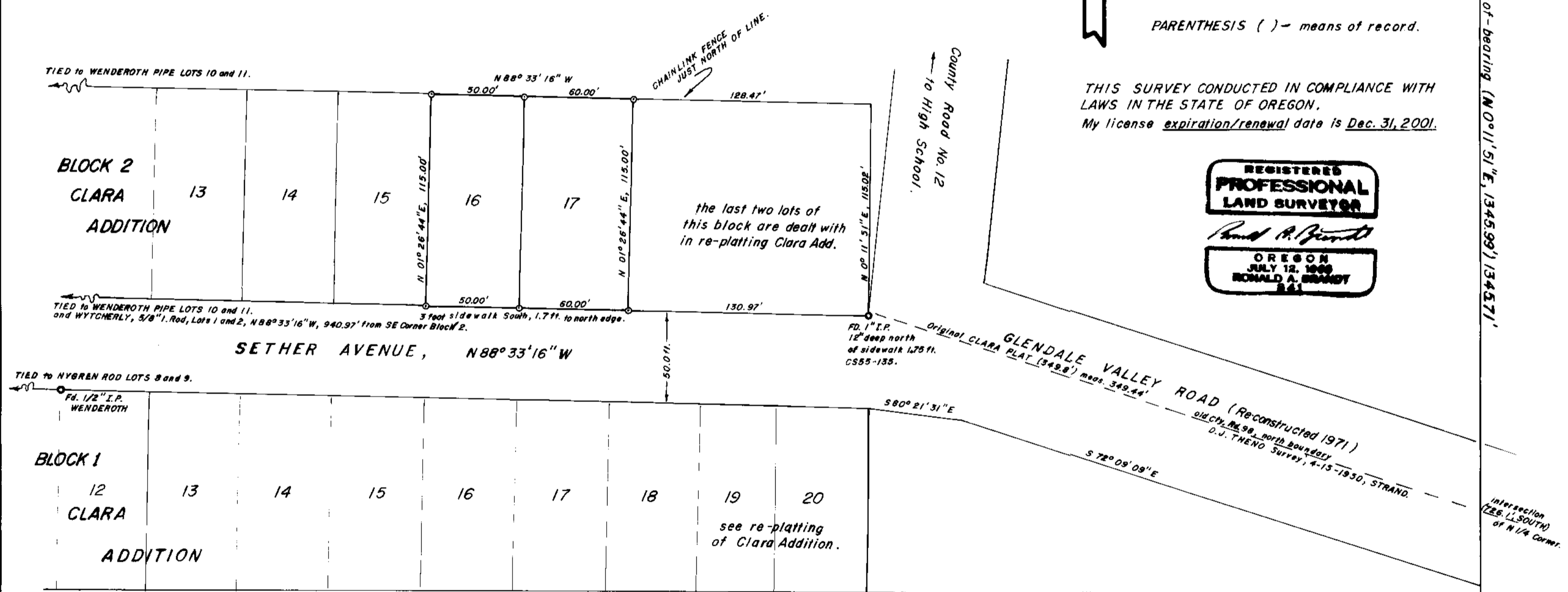
SCALE: 1 inch = 50 ft.

BASIS-OF-BEARING:
M 49-21, SURVEYORS OFFICE, 1973.

LEGEND:
MONUMENTS - Found ○
Set ○ 5/8" x 30", flush I.Rods
1/2" cap mkd.
"BRANDT LS 841"
NON-MONUMENTED - ●
PARENTHESIS () - means of record.

THIS SURVEY CONDUCTED IN COMPLIANCE WITH
LAWS IN THE STATE OF OREGON.
My license expiration/renewal date is Dec. 31, 2001.

REGISTERED
PROFESSIONAL
LAND SURVEYOR
Ronald A. Brandt
OREGON
JULY 12, 1969
RONALD A. BRANDT
841



APPROVAL:
The City of Glendale approves adding 10ft. to Lot 17 as platted herein.
Eve L. Foote Nov. 16, 2000
City of Glendale Recorder — Date.

FILED
Date: 12/4/2000 By: JP
This survey consists of:
Map: M136-17
Narrative: LS 45/29-12 A Thru C
Corner Rpt: _____

DOUGLAS COUNTY
SURVEYOR

FOUND NC 1/16" I.R.
CORNER, 1-inch I. ROD
and B.T.'s, M 49-21.
Located below R.Rd.
and above mill yard.

MAP FILE M136-17

MAP FILE M136-17

FILED

FOR FILING USE-

Date: 12-4-2000 By: JP

This survey consists of:

Map: M136-17

Narrative: CS 65/29-12

Corner Rpt: _____

DOUGLAS COUNTY
SURVEYOR

NARRATIVE OF LAND SURVEY

A LOT LINE ADJUSTMENT

In the NE 1/4, NW 1/4, Sec. 4, T.33S., R.6W., W.M.

**Lot 17, Block 2, Clara Addition
City of Glendale, Douglas County, Oregon**

For-

**Superior Lumber Co. and
Glendale School District
Glendale, Oregon 97442**

By-

**Superior Lumber Co.,
Ronald Brandt. L.S. 841
P.O. Box 250
Glendale, Oregon 97442**

November 10, 2000

NARRATIVE of SURVEY in the NE 1/4, NW 1/4, Sec. 4, T. 33 S., R.6 W., W.M., Douglas County, Oregon. This survey was conducted for Superior Lumber Co. and the Glendale School District, Glendale, Oregon for the Districts' "Learn to Build" homebuilding class.

PURPOSE : Survey of a lot line adjustment for administrative approval in adding 10 feet of width on the east side of Lot 17, Block 2, Clara Addition, City of Glendale. This plat will be followed with a "re-platting" of Clara Addition for proper hearing and signature approvals.

METHOD : A closed-traverse with error-of-closure at 1/18,500. Ties were taken as needed to existing monuments, fences, streets and walkways. Basis-of-bearing is M49-21, Surveyors Office, with a 1973 Solar Observation by myself.

EQUIPMENT : The survey was conducted with a Jena 20-second theodolite and an adding 300 ft. stainless steel tape.

RESULTS : six (6) 5/8 x 30 inch steel rods were driven flush and covered with 1 1/2 inch aluminum caps marked BRANDT LS 841.

INDIVIDUALS and DATES : This survey began on June 15 and was completed Oct 28th, 2000 by myself and Jonathan King.

REFERENCES : Douglas County Surveyor Office file's on Clara Addition, Vol. 2, page 39, 1907, plus D.J. Theno survey of April 15, 1950 (Strand), c.s. file 53/43-2, c.s. 55/135-A, c.s. 46/ 35, c.s. 55/294, M49-21, c.s. 63-51-1A, M101-4, M126-46, M131-53 ; Douglas County Assessor plats showing a Lot 20 in Blocks 1 and 2 of Clara Addition with transactions from County Deed Records, also various deed records found showing property east-west width at 60 rods or 990 feet, one being "Barton Jones Tract" volume 108, page 141.

CORNERS FOUND :

1. N 1/4 Corner, Sec. 4, T.33 S., R. 6 W., W.M., washed-out between 1948 and 1965 but referenced by a witness corner, 1" I.P. in fenceline, located S 0° 11' 51" W, 76.80 ft. from the 1/4 Corner and with bearing trees intact.
2. NC 1/6 Corner, Sec. 4, T. 33S., R.6 W., WM., found 1" I.Rod and B.T.'s, undisturbed since 1973, when set. The southerly point of the 1/4 mile baseline for this current survey.
3. S 1/4 Corner, Sec. 33, T. 32 S., R. 6 W., W.M., found a boat spike set by County Land Surveyor this last summer, flush in asphalt under the guard rail on the east side of county road south of Cow Cr. bridge. Searched previously for brass cap but was apparently destroyed in the new bridge approach construction. Measured horizontal distance very close to the record distance from the N 1/4 Corner, Sec. 4, but appears to be about 0.33 feet south of brass cap position as found in M49-21.
4. SE Corner, Block 2, Clara Addition, City of Glendale, found 1" I.P. 12" deep in proper position set in c.s. 55/135, from which bears the north sidewalk edge South, 1.75 feet. A power pole lies between this pipe and the sidewalk.
5. Lot Corners, Block 2, Clara Addition, found 1/2" I.P.'s by Wenderoth on lots 10 and 11 and I.Rods by Wytcherley on Lots 1 and 2.
6. Lot Corners, Block 1, Clara Addition, found 1/2" I.P.'s by Wenderoth on Lots 11 and 12 and I. Rods by Nygren on Lots 8 and 9. Interior line monumenting in Blocks 1 and 2 appear to have been done from within each block and has proliferated an error of about 0.7 foot since the extended lot lines do not always coincide between the blocks. Generally, the east-west alignment positions seem to be close.

CORNERS SET : Monumented the corners of Lot 16 and 17 of Block 2, Clara Addition as noted above in results. The three northerly corners were just south of the Mahoney chainlink fence which is property to the north and the three southerly points were about 1.7 ft. north of the 3-foot wide sidewalk along Sether Avenue. Monuments fit well with fencelines (lotlines) to the west.

CERTIFICATION of ELEVATION

For: Glendale School District, Glendale, Oregon.

By: Ronald Brandt, LS 841

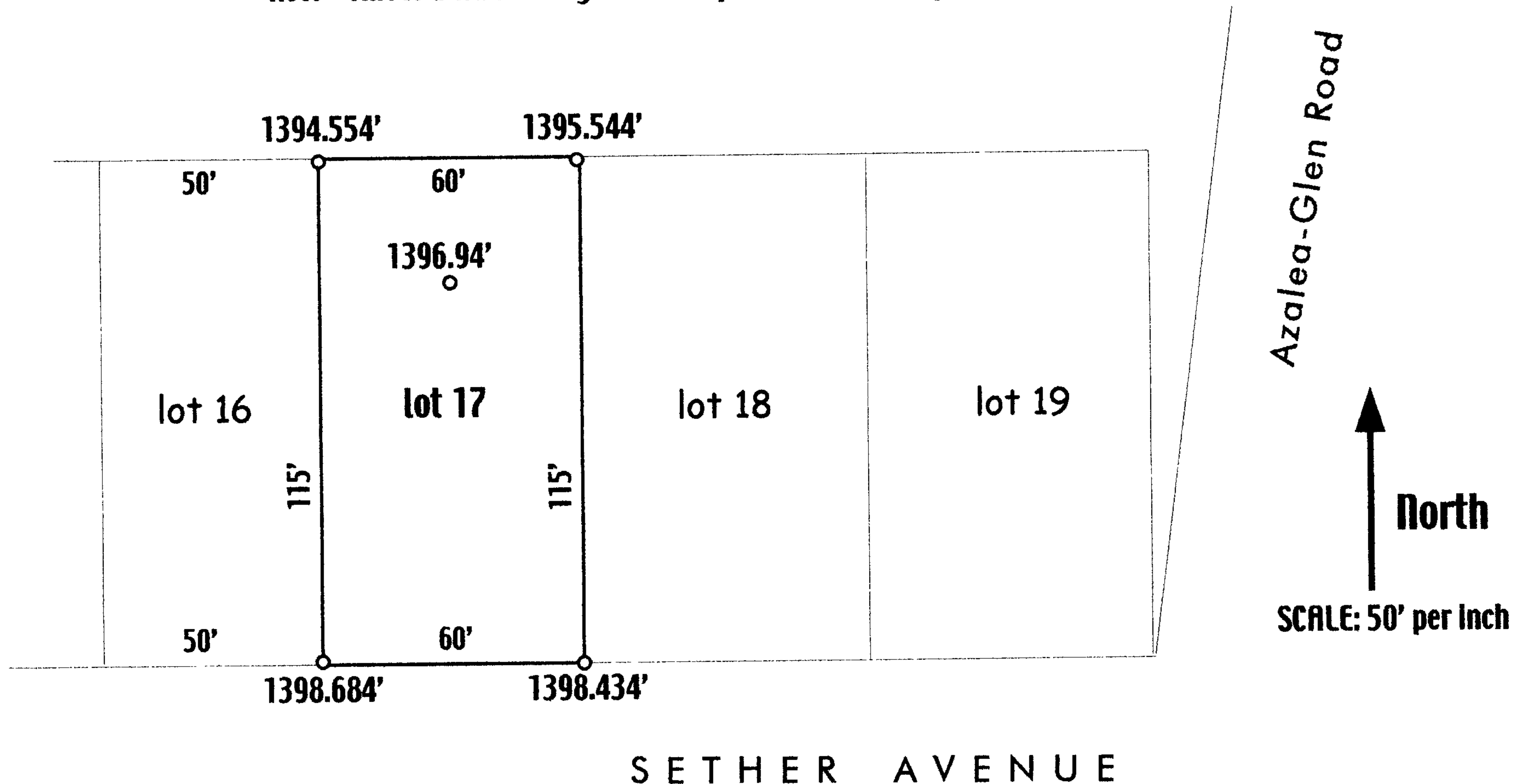
Superior Lumber Co., P.O. Box 250, Glendale, Oregon.

When: August 2000

Where: Lot 17, Block 2, Clara Addition, City of Glendale.

with lot line adjustment increasing the width to 60 feet.

Note- This is a sketch only and not a plat of land survey.



Showing a portion of Block 2, Clara Addition, Glendale, Oregon. All elevations taken to RM5, marked C103 1973, a brass cap in Sether Ave. curb and shown on the Glendale Flood Insurance Rate map as being at 1401.724 feet elevation. Elevations on lot 17 refer to the top surface of the four corner monuments in land survey to be filed in the Douglas County Surveyors Office, except for the inner lot point of 1396.944 feet which is just a point to show the substantial gain from the back line.

I certify the indicated elevations as true and accurate and that my interpretations from the Glendale Flood Insurance Rate Map show this lot to be inside the 500-year flood area but outside the 100-year flood zone of 1396.5 ft. elevation interpolated from said map.

REGISTERED
PROFESSIONAL
LAND SURVEYOR

Ronald A. Brandt

OREGON
JULY 12, 1968
RONALD A. BRANDT
841

LICENSE Expiration DATE
IS DEC. 31, 2001.

C.S. File No. 65/29-12C