

16
B 3

MAP FILE M-136-15

C.S. FILE NO. 65/29-11 A-E

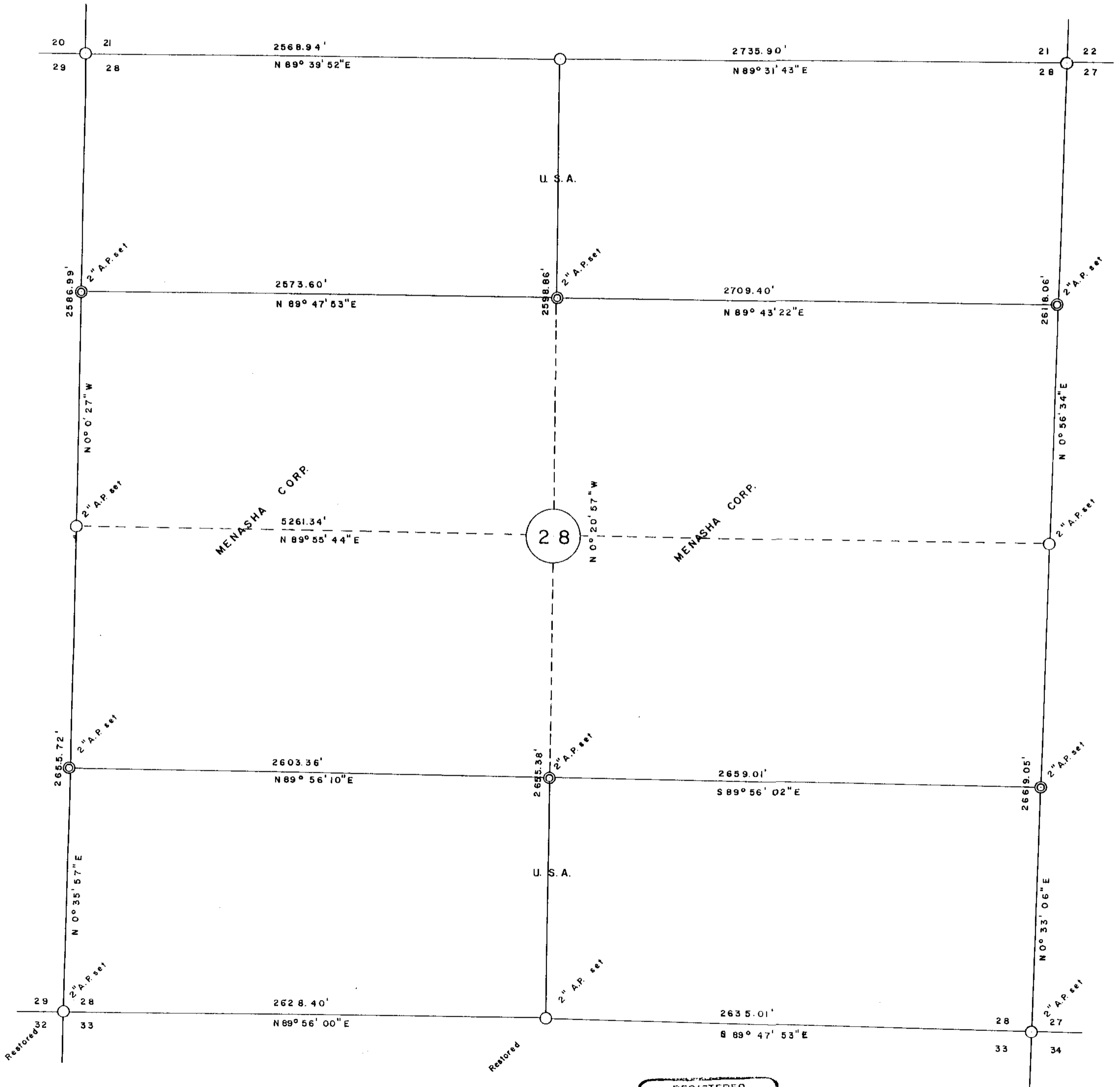
FILED
Date: 12-1-2000 By: JC
This survey consists of:
Map: M-136-15
Narrative: 65/29-11 A-E
Corner Rot:

DOUGLAS COUNTY
SURVEYOR

SURVEY FOR MENASHA CORP.

SECTION 28 TWN. 26 S, R 9 W.W.M.

SCALE: 1" = 400' COMPASS VAR. 20°E



- A. P. = Aluminium Pipe
- = Found Government Corner
- ⊙ = Established Corner

Area: 636.78 acres

REGISTERED
OREGON
LAND SURVEYOR

Theodore S. Ellingsen

Draughted by: R.L. Durham
Date: July, 1962

OCT. 22, 1961
THEODORE S. ELLINGSEN
329

C.S. File No. 65/29-11 A-E

MAP FILE M-136-15

July 11, 1962

10-201

3.6 10

Coos County Surveyor
Coquille, Oregon

Dear Sir:

A survey and subdivision of Section 28, Twp. 26 South, Range 9 west, W. M. has been completed and all appurtenant corners established by personnel of this company, the results of which are presented on the accompanying plat thereof and proceeded as follows:

A traverse with transit and chain was instituted at the NorthWest corner of said section, ran in a counter-clockwise direction, connecting all government corners and closed on the beginning point.

A new bearing tree was established for the west quarter (W $\frac{1}{4}$) corner of Section 28. The point for the corner was located from the only remaining original bearing tree. And at that point a 2 inch aluminium pipe 3 feet long was driven 2 feet into the ground from which

A 26 inch cedar bears N 69° E, 84.0 feet Scribed $\frac{1}{4}$ S 28 BT

New accessories were established for the Southwest (SW) corner of Section 28. The point for the corner was ascertained with reference to three original bearing trees, one of which retains legible scribing. And a 2 inch aluminium pipe 3 feet long was driven 2 feet into the ground from which

A 18 inch alder bears N 37° W, 26.2 feet Scribed S 29 BT

A 16 inch fir bears N 17° 45' E, 21.8 feet Scribed S 28 BT

A 19 inch fir bears S 13° E, 30.9 feet Scribed S 33 BT

A 12 inch fir bears S 50° W, 29.4 feet Scribed S 32 BT

New accessories were established for the South quarter (S $\frac{1}{4}$) corner of Section 28. From the deteriorated original bearing trees a 2 inch aluminium pipe 3 feet long was driven 2 feet into the ground for the S $\frac{1}{4}$ corner from which

A 8 inch hemlock bears N 85° W, 7.9 feet Scribed $\frac{1}{4}$ S 28 BT

A 9 inch hemlock bears S 30 $\frac{1}{2}$ ° E, 5.3 feet Scribed $\frac{1}{4}$ S 33 BT

In addition, 2 inch aluminium pipes 3 feet long were driven 2 feet into the ground for the Southeast (SE) and the East quarter (E $\frac{1}{4}$) corners of Section 28.

FILED

Date: 12-1-2000 By: SC

This survey consists of:

Map: M136-15

Narrative: 65/29-11A-E

Corner Ppt: _____

DOUGLAS COUNTY
SURVEYOR

C.S. File No. 65/29-11A

10-202
3.6 10

After a closed traverse was run around said section the latitude and departure of each government section corner was calculated and thence the proper location of the center of section was computed.

Thence the North $\frac{1}{16}$ corner between Sections 28 and 29 was set equidistant between the NW and W $\frac{1}{4}$ corners of Section 28. A 2 inch aluminium pipe 3 feet long was driven 2 feet into the ground from which

A 28 inch fir bears N 51° E, 75.6 feet Scribed N $\frac{1}{16}$ S 28 BT

A 10 inch cedar bears S $76\frac{1}{2}^{\circ}$ W, 75.1 feet Scribed N $\frac{1}{16}$ S 29 BT

Thence the South $\frac{1}{16}$ corner between Sections 28 and 29 was set equidistant between the W $\frac{1}{4}$ and the SW corners of Section 28. A 2 inch Aluminium pipe 3 feet long was driven 2 feet into the ground from which

A 12 inch hemlock bears N 70° W, 15.3 feet Scribed S $\frac{1}{16}$ S 29 BT

A 10 inch hemlock bears S $60\frac{1}{2}^{\circ}$ E, 9.7 feet Scribed S $\frac{1}{16}$ S 28 BT

Thence the South $\frac{1}{16}$ corner on the N-S center line of Section 28 was set equidistant between the S $\frac{1}{4}$ corner and the C $\frac{1}{4}$ position. A 2 inch aluminium pipe 3 feet long was driven 2 feet into the ground from which

A 18 inch fir bears N 28° W, 6.6 feet Scribed SC $\frac{1}{16}$ S 28 BT

A 28 inch hemlock bears S 26° E, 15.3 feet Scribed SC $\frac{1}{16}$ S 28 BT

Thence the North $\frac{1}{16}$ corner on the N-S center line of Section 28 was set equidistant between the N $\frac{1}{4}$ corner and the C $\frac{1}{4}$ position. A 2 inch aluminium pipe 3 feet long was driven 2 feet into the ground from which

A 14 inch hemlock bears N 50° E, 6.4 feet Scribed NC $\frac{1}{16}$ S 28 BT

A 12 inch hemlock bears S 15° W, 7.5 feet Scribed NC $\frac{1}{16}$ S 28 BT

Thence the South $\frac{1}{16}$ corner between Sections 27 and 28 was set equidistant between the E $\frac{1}{4}$ and the SE corners of Section 28. The corner is occupied by a 26 inch cedar tree scribed $\frac{1}{16}$ COR from which

A 18 inch cedar bears S 48° E, 30.0 feet Scribed S $\frac{1}{16}$ S 27 BT

Thence the North $\frac{1}{16}$ corner between Sections 27 and 28 was set equidistant between the E $\frac{1}{4}$ and the NE corners of Section 28. A 2 inch aluminium pipe 3 feet long was driven 2 feet into the ground from which

A 20 inch hemlock bears N 69° W, 37.8 feet Scribed N $\frac{1}{16}$ S 28 BT

A 18 inch hemlock bears N 4° E, 20.3 feet Scribed N $\frac{1}{16}$ S 27 BT

14
~~10-20~~
3.5 10

The 1/8 line in the NW $\frac{1}{4}$ bears N 89°47' 53" E for a distance of 2573.60 feet,
thence continuing in the NE $\frac{1}{4}$ bears N 89°43' 22" E a distance of 2709.40 feet.

The 1/8 line in the SW $\frac{1}{4}$ bears N 89°56' 10" E a distance of 2603.36 feet,
thence continuing in the SE $\frac{1}{4}$ bears S 89°56' 02" E a distance of 2659.01 feet.

The total acreage of the entire Section 28 was calculated to be 636.78 acres.

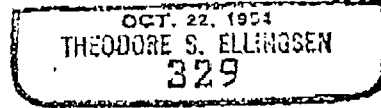
Respectfully submitted,

Theodore S. Ellingsen

TSE:rd



Theodore S. Ellingsen



Filed 3-11-00 J E Lutzmann Co. Surveyor

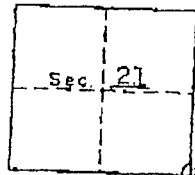
C.S. File No. 65/29-11C

10-139

BK 10

LOCAL RECORD
 CORNERS OF THE CADASTRAL SURVEY GRID
 T. 26 S., R. 9 W., Will. Mer., Ore. State.

UNITED STATES
 DEPARTMENT OF THE INTERIOR
 BUREAU OF LAND MANAGEMENT



- SYMBOLS
- ◆ Official corner found
 - ◇ Probable corner found, authenticity doubtful.
 - Corner searched for and not found.

Reported by H.R. Moore
 Signature
Project Engineer
 Date 5-62

Sec. Corner common to Secs. 21 22 27 & 28
 tree, rock, fire pit, iron pipe, 3" x 3" x 3" firpost, 1 set 5-62

LEGIBLE MARKS ON BEARING OBJECTS

stump w/face but	snag w/visible down scrib	dead & w/whopped out face	
rotten		rotten	
away			
KIND Yew	Yew	Hem.	
SIZE 10"	11"	11"	
BEARING N32°08'	S34°08'	N35°08'	
DISTANCE 38'	66'	62'	
BY TAG POSTED 5-62	5-62	5-62	

ADDITIONAL INFORMATION

Old GLO tag on 12" hemlock approximately 60' west of corner.
 Poster on ridge approximately 1400' west of corner. 5-62

FAIRBANKS - SPOKANE PUBLIC ADMINISTRATION, PORTLAND, OREGON (OVER) 10-139

FILED
 AUG 13 1962
J. L. Dahlmann
 COUNTY SURVEYOR
 DEPUTY

10-199

BK 1

A1-256 LOCAL RECORD
 7-29-55 CORNERS OF THE CADASTRAL SURVEY GRID
 T. 26 S. R. 9 W. Will. Ore. State.

UNITED STATES
 DEPARTMENT OF THE INTERIOR
 BUREAU OF LAND MANAGEMENT

Approved By R.L. Durham
 Title For. Engineer
 Date 5-15-62

SYMBOLS
 Official corner found
 Probable corner found, authenticity doubtful.
 Corner searched for and not found.

MARKS:
 Sec. Corner common to Secs. 27, 28, 34 & 33 is a mound of stone, tree, rock, fire pit, iron pipe, I.P. size 2ft

LEGIBLE MARKS ON BEARING OBJECTS				ADDITIONAL INFORMATION			
face	T. 26 S.	face					
	R. 9 W.						
	W.M.						
NW	NE	SW	SE				
KIND	Chink	D.F.	chink	GONE			
SIZE	17"	55"	10"				
BEARING	N 57 3/4 W	N 18 E	S 71 3/4 W				
DISTANCE	17.5	25 lks	50 lks				
BY TAG POSTED		old tag	tag				

(OVER) 10-199

FILED

NOV 26 1963

J. P. Lantz
CRIMINAL DIVISION

DEPUTY

C.S. File No. 65/29-11 E