

NARRATIVE:

THE PURPOSE OF THIS SURVEY WAS TO MONUMENT THE W 1/16 CORNER, SECTIONS 17 AND 20, AND THE E 1/16 CORNER OF SECTIONS 18 AND 19, AND TO POST THE NORTH, SOUTH AND EAST LINES OF THE NW 1/4, NW 1/4 OF SECTION 20, AND THE NORTH, SOUTH AND WEST LINES OF THE NE 1/4, NE 1/4 OF SECTION 19. THE W 1/16 CORNER OF SECTIONS 17 AND 20 WAS SET AT SINGLE PROPORTIONATE DISTANCES BETWEEN THE PERPETUATED ORIGINAL CORNERS AT THE NE AND NW CORNERS OF SECTION 20. THE E 1/16 CORNER OF SECTIONS 18 AND 19 WAS SET AT SINGLE PROPORTIONATE DISTANCE BETWEEN THE PERPETUATED ORIGINAL CORNERS AT THE NE AND N 1/4 CORNERS OF SECTION 19. THE NW 1/16 CORNER OF SECTION 20 AND THE N 1/16 CORNER OF SECTIONS 19 AND 20 WAS FOUND PER M 129-23. A WITNESS CORNER TO THE NE 1/16 OF SECTION 19 WAS FOUND PER M 129-43.

ALL NEW BEARING TREES HAVE DOUBLE BLAZED FACES WITH A BRASS WASHER STAMPED "PLS 1941" NAILED INTO THE LOWER BLAZE. BEARINGS ARE TAKEN TO THE CENTER OF THE ROOT CROWN AND DISTANCES ARE MEASURED TO A NAIL IN THE ROOT CROWN AT THE SIDE AND CENTER OF THE TREE. ALL BEARING TREES HAVE A 6" RED BAND PAINTED AROUND THE TREE AND BEARING TREE SIGNS NAILED TO THE TREE.

THIS SURVEY WAS PERFORMED BY LES FANNING, MICKEY CALVERT AND KRIS DEGROOT USING LEICA SR 299 GPS RECEIVERS AND A SOKKIA SET 2BII TOTAL STATION. CLOSED LOOP TRAVERSE TIES WERE SURVEYED BETWEEN GPS CONTROL POINTS AND PLSS CORNER POSITIONS. COMPUTATIONS WERE PERFORMED BY KRIS DEGROOT AND DRAFTING BY BILL WARREN.

RECORD OF SURVEY

LOCATED IN

SECTIONS 19 & 20, T30S, R6W, W.M.

DOUGLAS COUNTY, OREGON

FILED

Date: 11/15/2000 By: JP
 This survey consists of:
 Map: M136-1
 Narrative: _____
 Cover Rpt: _____

DOUGLAS COUNTY
SURVEYOR

MAP FILE M136-1

E 1/16 S18/S19

- ① SET A 5/8" X 30" IRON ROD 26" IN GROUND, WITH A 2" DIAMETER ALUMINUM CAP STAMPED:

"T30S R6W"
 E1/16 S18
 S19
 2000
 PLS 1941

FROM WHICH NEW BEARING TREES:

- A 13" D. FIR BEARS N.18°E., 27.1 FT. SCRIBED "E 1/16 S18 BT".
- A 8" D. FIR BEARS S.82°E., 14.2 FT. SCRIBED "E 1/16 S19 BT".
- AND A NEW BEARING OBJECT:
- A 5/8" IRON ROD, (FOUND, NO RECORD) BEARS N.53°W., 2.21 FT.

W 1/16 S17/S20

- ② SET A 5/8" X 30" IRON ROD 30" IN GROUND, WITH A 2" DIAMETER ALUMINUM CAP STAMPED:

"T30S R6W"
 W 1/16
 S17
 S20
 2000
 PLS 1941

FROM WHICH NEW BEARING TREES:

- A 12" P. PINE BEARS N.32°30'E., 28.1 FT. SCRIBED "W 1/16 S17 BT".
- A 8" P. PINE BEARS S.56°30'E., 20.7 FT. SCRIBED "W 1/16 S20 BT".
- AND A NEW BEARING OBJECT:
- A 5/8" IRON ROD, (FOUND, NO RECORD) BEARS N.30°56'34" E., 30.84 FT.

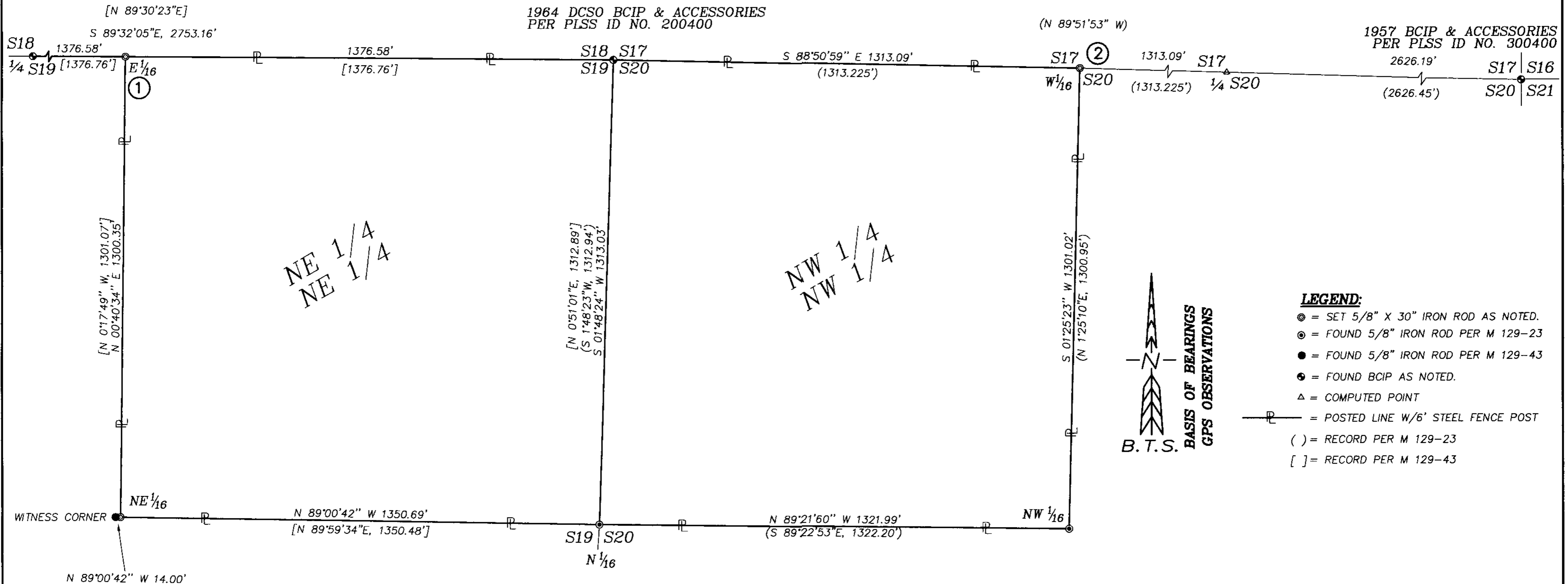


RENEWAL DATE: 12-31-01

1963 DCSO BCIP & ACCESSORIES
PER PLSS ID NO. 140400

1964 DCSO BCIP & ACCESSORIES
PER PLSS ID NO. 200400

1957 BCIP & ACCESSORIES
PER PLSS ID NO. 300400



BTS ENGINEERING & SURVEYING, INC.
 431 S.E. MAIN ST., ROSEBURG, OR 97470
 PHONE (541) 673-0966 FAX (541) 673-0105

SCALE: 1" = 200'
 DATE: OCTOBER, 2000

GLENBROOK NICKEL CO.
 5093 RIDDLE BYPASS ROAD
 RIDDLE, OREGON 97469

JOB #: 00-036
 FILE: GLEN-036.DWG
 SHEET 1 OF 1

MAP FILE M136-1