

FILED

Date: 6/20/2000 By: SP

This survey consists of:

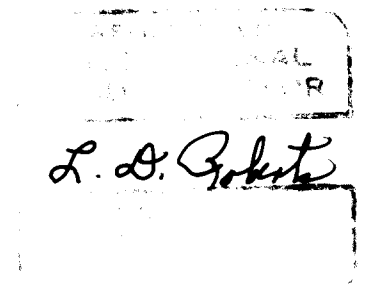
Map: M135-B

Narrative: _____

Corner Rpt: _____

DOUGLAS COUNTY SURVEYOR

BOUNDARY SURVEY
 FOR
 IVAN GAGNER
 IN
 NW1/4 SECTION 11, T22S, R6W, W.M.
 DOUGLAS COUNTY, OREGON
 BY
 ROBERTS SURVEYING INC.
 P.O. BOX 7155
 EUGENE, OREGON 97401
 PHONE 345-1112



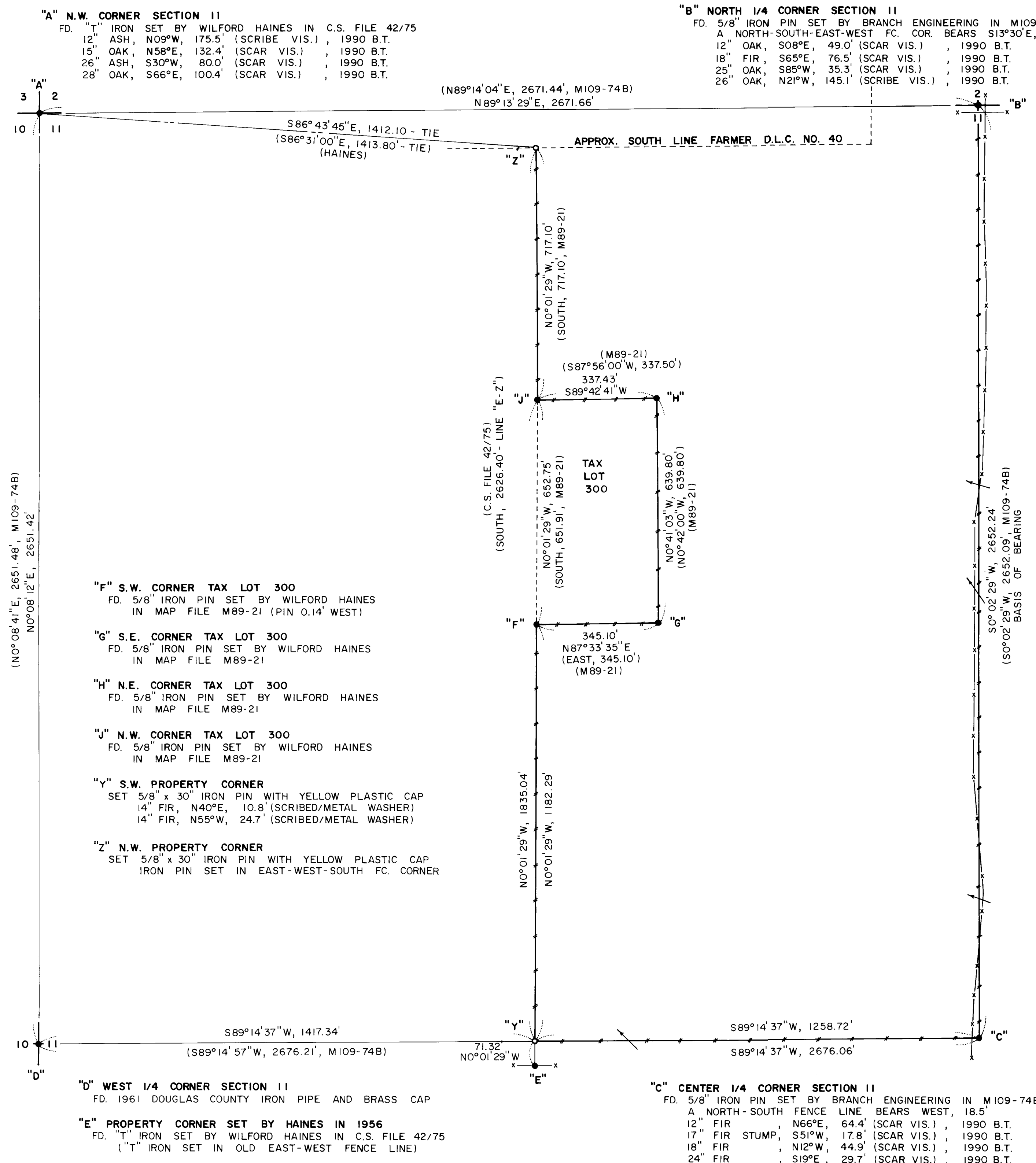
EXPIRES 12-31-2000

SCALE 1" = 200'
JUNE 2, 2000

LEGEND,

- MONUMENTS FOUND AND USED FOR CONTROL
- MONUMENTS SET - 5/8" x 30" IRON PINS WITH YELLOW PLASTIC CAPS. CAPS STAMPED ROBERTS SURVEYING INC.
- x—x— LINES MARKED WITH RED PAINTED BLAZES AND RED PLASTIC RIBBON.
- () DATA OF RECORD - C.S. FILE 42/75 BY WILFORD HAINES IN 1956. MAP FILE M89-21 BY WILFORD HAINES IN 1981. MAP FILE M109-74B BY BRANCH ENGINEERING IN 1990.
- BASIS OF BEARING - LINE "B-C" FROM MAP FILE M109-74B
- DISTANCES TO BEARING TREES ARE CENTER MEASURE
- ALL NEW BEARING TREES ARE SCRIBED AND HAVE A METAL WASHER STAMPED P.L.S. 1039 NAILED TO LOWER BLAZE. LOWER BLAZES ARE PAINTED RED.
- x—x— = EXISTING FENCE —> = CREEK

NARRATIVE, THE PURPOSE OF THIS SURVEY IS TO BLAZE AND PAINT THE FOLLOWING PROPERTY LINES. 1) LINE "B-C", THE NORTH 1/2 OF THE NORTH-SOUTH & 2) LINE "C-Y", A PORTION OF THE EAST 1/2 OF THE WEST 1/2 OF THE EAST-WEST & 3) PROPERTY LINE "Y-F" 4) PROPERTY LINE "F-G" 5) PROPERTY LINE "G-H" 6) PROPERTY LINE "H-J" AND PROPERTY LINE "J-Z". THE N.W. SECTION CORNER, THE NORTH 1/4 CORNER, THE CENTER 1/4 CORNER, THE WEST 1/4 CORNER, FOUND "T" IRON "E", FOUND 5/8" IRON PIN "F", FOUND 5/8" IRON PIN "G", FOUND 5/8" IRON PIN "H" AND FOUND 5/8" IRON PIN "J" WERE FOUND IN THE FIELD AND USED AS CONTROL FOR THIS SURVEY. A SERIES OF RANDOM E.D.M. CONTROL TRAVERSES, USING A WILD T-16 THEODOLITE AND A DI-4L E.D.M., WERE RUN BETWEEN THE CONTROLLING CORNERS FOUND IN THE FIELD. THE S.W. PROPERTY CORNER "Y" WAS SET BY INTERSECTION AS FOLLOWS. THE EAST-WEST & OF SECTION 11, LINE "C-D", WAS INTERSECTED WITH PROPERTY LINE "E-J" AS ESTABLISHED BY WILFORD HAINES IN MAP FILE M89-21. THUS THE INVERSE BEARINGS AND DISTANCES OF S89°14'37"W, 1258.72 FEET FOR LINE "C-Y" AND N0°01'29"W, 71.32 FEET FOR LINE "E-Y". THE N.W. PROPERTY CORNER "Z" WAS SET AS FOLLOWS. LINE "E-J" WAS EXTENDED NORTHERLY, 717.10 FEET (DEED CALL) TO POINT "Z", THUS THE INVERSE BEARING AND DISTANCE OF N0°01'29"W, 717.10 FEET FOR LINE "J-Z". A CLOSED RANDOM PROPERTY LINE TRAVERSE, USING A WILD T-16 THEODOLITE AND A DI-4L E.D.M., WAS RUN ALONG ALL PROPERTY LINE TO BE BLAZED AND PAINTED. HORIZONTAL OFFSETS WERE COMPUTED, FROM THIS RANDOM PROPERTY LINE TRAVERSE, TO THE TRUE PROPERTY LINES. PROPERTY LINES WERE MARKED WITH RED PAINTED BLAZES AND RED PLASTIC RIBBON.



"A" N.W. CORNER SECTION 11
 FD. "T" IRON SET BY WILFORD HAINES IN C.S. FILE 42/75
 12" ASH, N09°W, 175.5' (SCRIBE VIS.), 1990 B.T.
 15" OAK, N58°E, 132.4' (SCAR VIS.), 1990 B.T.
 26" ASH, S30°W, 80.0' (SCAR VIS.), 1990 B.T.
 28" OAK, S66°E, 100.4' (SCAR VIS.), 1990 B.T.

"B" NORTH 1/4 CORNER SECTION 11
 FD. 5/8" IRON PIN SET BY BRANCH ENGINEERING IN M109-74B.
 A NORTH-SOUTH-EAST-WEST FC. COR. BEARS S13°30'E, 24.0'
 12" OAK, S08°E, 49.0' (SCAR VIS.), 1990 B.T.
 18" FIR, S65°E, 76.5' (SCAR VIS.), 1990 B.T.
 25" OAK, S85°W, 35.3' (SCAR VIS.), 1990 B.T.
 26" OAK, N21°W, 145.1' (SCRIBE VIS.), 1990 B.T.

"F" S.W. CORNER TAX LOT 300
 FD. 5/8" IRON PIN SET BY WILFORD HAINES
 IN MAP FILE M89-21 (PIN 0.14' WEST)

"G" S.E. CORNER TAX LOT 300
 FD. 5/8" IRON PIN SET BY WILFORD HAINES
 IN MAP FILE M89-21

"H" N.E. CORNER TAX LOT 300
 FD. 5/8" IRON PIN SET BY WILFORD HAINES
 IN MAP FILE M89-21

"J" N.W. CORNER TAX LOT 300
 FD. 5/8" IRON PIN SET BY WILFORD HAINES
 IN MAP FILE M89-21

"Y" S.W. PROPERTY CORNER
 SET 5/8" x 30" IRON PIN WITH YELLOW PLASTIC CAP
 14" FIR, N40°E, 10.8' (SCRIBED/METAL WASHER)
 14" FIR, N55°W, 24.7' (SCRIBED/METAL WASHER)

"Z" N.W. PROPERTY CORNER
 SET 5/8" x 30" IRON PIN WITH YELLOW PLASTIC CAP
 IRON PIN SET IN EAST-WEST-SOUTH FC. CORNER

"D" WEST 1/4 CORNER SECTION 11
 FD. 1961 DOUGLAS COUNTY IRON PIPE AND BRASS CAP

"E" PROPERTY CORNER SET BY HAINES IN 1956
 FD. "T" IRON SET BY WILFORD HAINES IN C.S. FILE 42/75
 ("T" IRON SET IN OLD EAST-WEST FENCE LINE)

"C" CENTER 1/4 CORNER SECTION 11
 FD. 5/8" IRON PIN SET BY BRANCH ENGINEERING IN M109-74B
 A NORTH-SOUTH FENCE LINE BEARS WEST, 18.5'
 12" FIR, N66°E, 64.4' (SCAR VIS.), 1990 B.T.
 17" FIR STUMP, S51°W, 17.8' (SCAR VIS.), 1990 B.T.
 18" FIR, N12°W, 44.9' (SCAR VIS.), 1990 B.T.
 24" FIR, S19°E, 29.7' (SCAR VIS.), 1990 B.T.

MAP FILE M135-B

MAP FILE M135-B