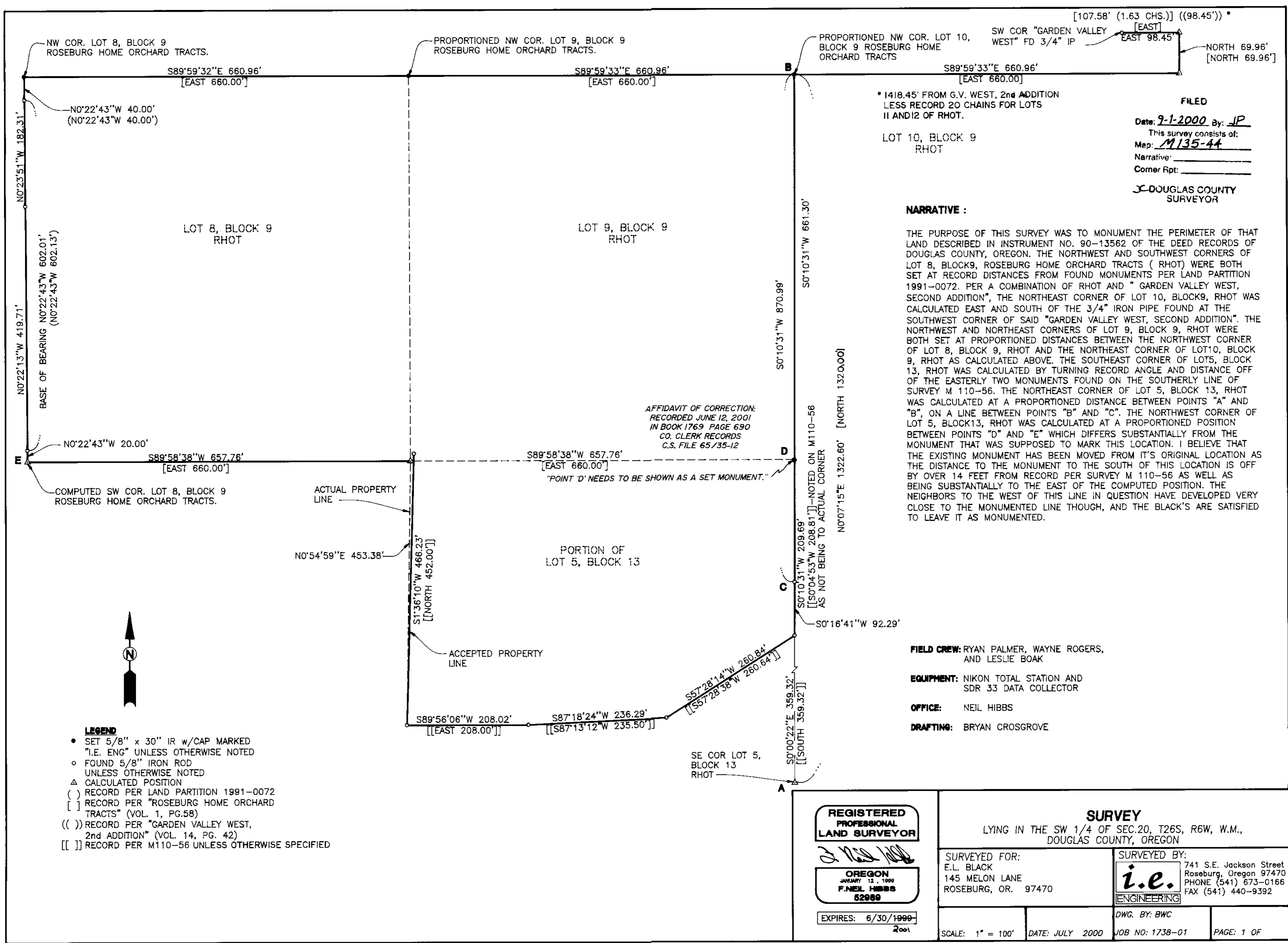


MAP FILE M135-44



FILED
 Date: 9-1-2000 By: JP
 This survey consists of:
 Map: M135-44
 Narrative: _____
 Corner Rpt: _____
 J. DOUGLAS COUNTY SURVEYOR

NARRATIVE :

THE PURPOSE OF THIS SURVEY WAS TO MONUMENT THE PERIMETER OF THAT LAND DESCRIBED IN INSTRUMENT NO. 90-13562 OF THE DEED RECORDS OF DOUGLAS COUNTY, OREGON. THE NORTHWEST AND SOUTHWEST CORNERS OF LOT 8, BLOCK 9, ROSEBURG HOME ORCHARD TRACTS (RHOT) WERE BOTH SET AT RECORD DISTANCES FROM FOUND MONUMENTS PER LAND PARTITION 1991-0072. PER A COMBINATION OF RHOT AND " GARDEN VALLEY WEST, SECOND ADDITION", THE NORTHEAST CORNER OF LOT 10, BLOCK 9, RHOT WAS CALCULATED EAST AND SOUTH OF THE 3/4" IRON PIPE FOUND AT THE SOUTHWEST CORNER OF SAID "GARDEN VALLEY WEST, SECOND ADDITION". THE NORTHWEST AND NORTHEAST CORNERS OF LOT 9, BLOCK 9, RHOT WERE BOTH SET AT PROPORTIONED DISTANCES BETWEEN THE NORTHWEST CORNER OF LOT 8, BLOCK 9, RHOT AND THE NORTHEAST CORNER OF LOT 10, BLOCK 9, RHOT AS CALCULATED ABOVE. THE SOUTHWEST CORNER OF LOTS 5, BLOCK 13, RHOT WAS CALCULATED BY TURNING RECORD ANGLE AND DISTANCE OFF OF THE EASTERLY TWO MONUMENTS FOUND ON THE SOUTHERLY LINE OF SURVEY M 110-56. THE NORTHEAST CORNER OF LOT 5, BLOCK 13, RHOT WAS CALCULATED AT A PROPORTIONED DISTANCE BETWEEN POINTS "A" AND "B", ON A LINE BETWEEN POINTS "B" AND "C". THE NORTHWEST CORNER OF LOT 5, BLOCK 13, RHOT WAS CALCULATED AT A PROPORTIONED POSITION BETWEEN POINTS "D" AND "E" WHICH DIFFERS SUBSTANTIALLY FROM THE MONUMENT THAT WAS SUPPOSED TO MARK THIS LOCATION. I BELIEVE THAT THE EXISTING MONUMENT HAS BEEN MOVED FROM IT'S ORIGINAL LOCATION AS THE DISTANCE TO THE MONUMENT TO THE SOUTH OF THIS LOCATION IS OFF BY OVER 14 FEET FROM RECORD PER SURVEY M 110-56 AS WELL AS BEING SUBSTANTIALLY TO THE EAST OF THE COMPUTED POSITION. THE NEIGHBORS TO THE WEST OF THIS LINE IN QUESTION HAVE DEVELOPED VERY CLOSE TO THE MONUMENTED LINE THOUGH, AND THE BLACK'S ARE SATISFIED TO LEAVE IT AS MONUMENTED.

AFFIDAVIT OF CORRECTION:
 RECORDED JUNE 12, 2001
 IN BOOK 1769 PAGE 690
 CO. CLERK RECORDS
 C.S. FILE 65/35-12

"POINT 'D' NEEDS TO BE SHOWN AS A SET MONUMENT."

FIELD CREW: RYAN PALMER, WAYNE ROGERS, AND LESLIE BOAK
EQUIPMENT: NIKON TOTAL STATION AND SDR 33 DATA COLLECTOR
OFFICE: NEIL HIBBS
DRAFTING: BRYAN CROSGROVE

- LEGEND**
- SET 5/8" x 30" IR w/CAP MARKED "I.E. ENG" UNLESS OTHERWISE NOTED
 - o FOUND 5/8" IRON ROD UNLESS OTHERWISE NOTED
 - Δ CALCULATED POSITION
 - () RECORD PER LAND PARTITION 1991-0072
 - [] RECORD PER "ROSEBURG HOME ORCHARD TRACTS" (VOL. 1, PG.58)
 - (()) RECORD PER "GARDEN VALLEY WEST, 2nd ADDITION" (VOL. 14, PG. 42)
 - [[]] RECORD PER M110-56 UNLESS OTHERWISE SPECIFIED

	SURVEY	
	LYING IN THE SW 1/4 OF SEC.20, T26S, R6W, W.M., DOUGLAS COUNTY, OREGON	
SURVEYED FOR: E.L. BLACK 145 MELON LANE ROSEBURG, OR. 97470	SURVEYED BY: 741 S.E. Jackson Street Roseburg, Oregon 97470 PHONE (541) 673-0166 FAX (541) 440-9392	DWG. BY: BWC SCALE: 1" = 100' DATE: JULY 2000 JOB NO: 1738-01 PAGE: 1 OF

MAP FILE M135-44

COUNTY SURVEYORS FILE DATA
DO NOT REMOVE FROM OFFICE