

FILED

Date: 8-22-2000 By: JP
This survey consists of:
Map: M135-39
Narrative:
Corner Rpt:

DOUGLAS COUNTY
SURVEYOR

SURVEY FOR
GIUSTINA RESOURCES INC.
IN
SW 1/4 SECTION 25, T21S, R5W, W.M.
DOUGLAS COUNTY, OREGON
BY
ROBERTS SURVEYING INC.
P.O. BOX 7155
EUGENE, OREGON 97401
PHONE 345-1112

MAP FILE M135-39

"C" WEST 1/4 CORNER SECTION 25

"D" C.W. 1/16 CORNER SECTION 25

FD. 1997 B.L.M. IRON PIPE AND BRASS CAP
9" FIR, S70°W, 31.1' (SCRIBE VIS.), 1996 B.T.
13" FIR, N37°W, 2.3' (SCRIBE VIS.), 1996 B.T.
13" FIR, S04°E, 4.5' (SCRIBE VIS.), 1996 B.T.
13" FIR, N74°E, 18.1' (SCRIBE VIS.), 1996 B.T.

FD. 1997 B.L.M. IRON PIPE AND BRASS CAP
12" FIR, N60°W, 35.6' (SCRIBE VIS.), 1997 B.T.
20" CEDAR, S38°W, 48.8' (SCRIBE VIS.), 1997 B.T.
A 5/8" IRON PIN SET IN M79-69 BEARS
N58°06'W, 9.06'

"E" C.S. 1/16 CORNER SECTION 25

FD. 1997 B.L.M. IRON PIPE AND BRASS CAP
10" FIR STP., N63°E, 52.8' (SCRIBE VIS.), 1997 B.T.
14" FIR STP., N01°W, 33.0' (SCRIBE VIS.), 1997 B.T.
A 5/8" IRON PIN MARKED RILEY BEARS
S5°13'00"E, 3.09'

"F" SOUTH 1/4 CORNER SECTION 25

FD. 1997 B.L.M. IRON PIPE AND BRASS CAP
18" FIR STP., S10°W, 16.5' (SCRIBE VIS.), 1855 B.T.
16" FIR, N50°W, 37.0' (SCAR VIS.), 1990 B.T.
20" FIR STP., N86°E, 24.0' (SCAR VIS.), 1990 B.T.
12" FIR, S14°E, 29.9' (SCRIBE VIS.), 1997 B.T.

"G" WEST 1/16 CORNER TO SECTIONS 25 AND 36
COMPUTED POINT - NO MONUMENT SET

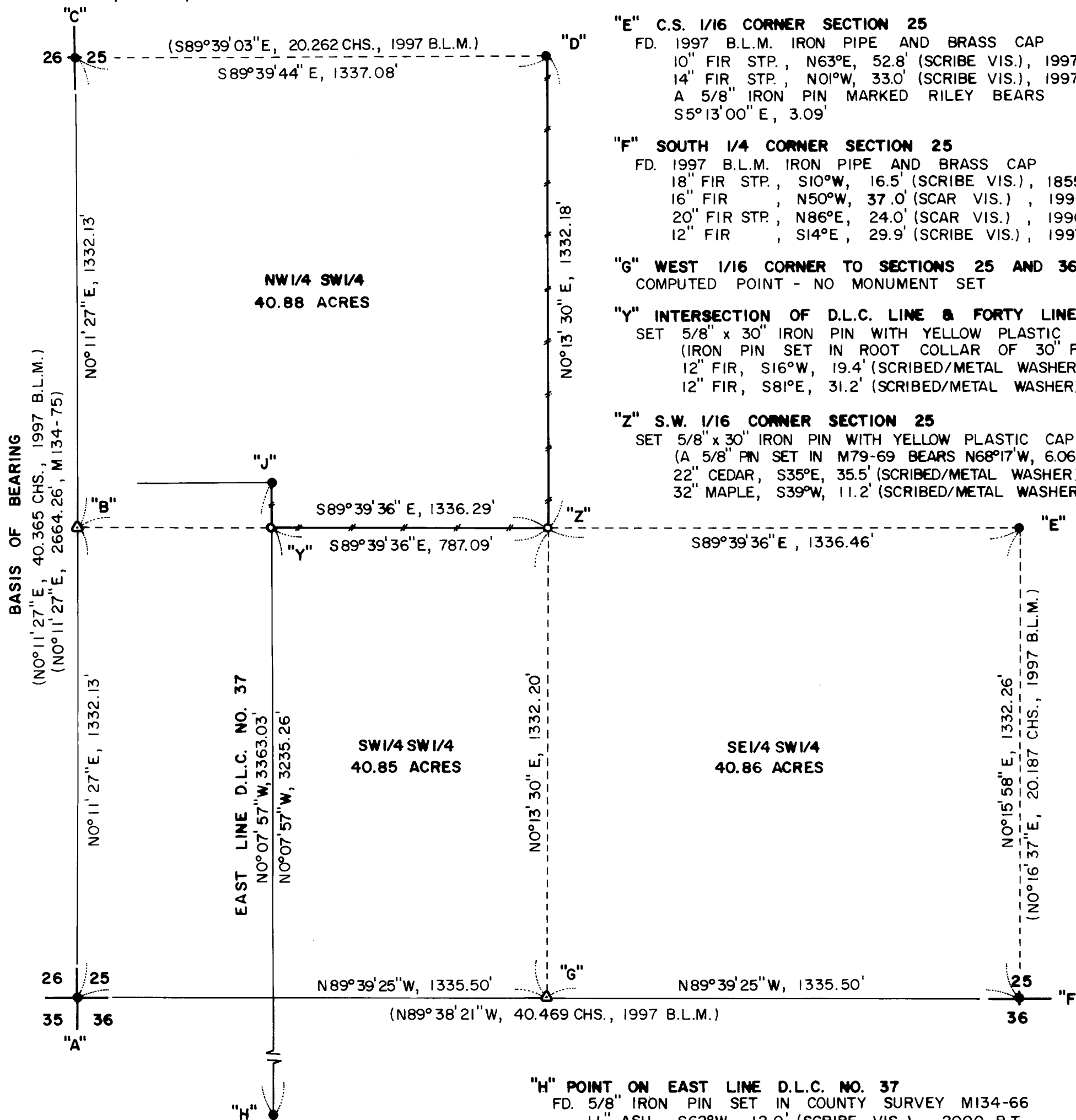
"Y" INTERSECTION OF D.L.C. LINE & FORTY LINE
SET 5/8" x 30" IRON PIN WITH YELLOW PLASTIC CAP
(IRON PIN SET IN ROOT COLLAR OF 30" FIR)
12" FIR, S16°W, 19.4' (SCRIBED/METAL WASHER)
12" FIR, S81°E, 31.2' (SCRIBED/METAL WASHER)

"Z" S.W. 1/16 CORNER SECTION 25

SET 5/8" x 30" IRON PIN WITH YELLOW PLASTIC CAP
(A 5/8" PIN SET IN M79-69 BEARS N68°17'W, 6.06')
22" CEDAR, S35°E, 35.5' (SCRIBED/METAL WASHER)
32" MAPLE, S39°W, 11.2' (SCRIBED/METAL WASHER)

LEGEND,

- MONUMENTS FOUND AND USED FOR CONTROL
- △ COMPUTED POINT - NO MONUMENT SET
- MONUMENTS SET, 5/8" x 30" IRON PINS WITH YELLOW PLASTIC CAPS. CAPS MARKED ROBERTS SURVEYING.
- () DATA OF RECORD - 1997 UNRECORDED B.L.M. SURVEY BY WAYNE ROGERS. COUNTY SURVEY M134-75 BY LES ROBERTS IN 2000
- LINES MARKED WITH RED PAINTED BLAZES, RED PLASTIC RIBBON AND GREEN METAL FENCE POSTS
- BASIS OF BEARING - LINE "A-B-C" FROM 1997 UNRECORDED B.L.M. SURVEY.
- DISTANCES TO BEARING TREES ARE CENTER MEASURE
- ALL NEW BEARING TREES ARE SCRIBED AND HAVE A METAL WASHER STAMPED P.L.S. 1039 NAILED TO LOWER BLAZE. SCRIBED BLAZES ARE PAINTED RED



SCALE 1" = 300'
AUGUST 4, 2000

REGISTERED
PROFESSIONAL
LAND SURVEYOR

L. D. Roberts

OREGON
AUGUST 7, 1975
L. D. ROBERTS
1039

EXPIRES 12-31-2000

NARRATIVE, THE PURPOSE OF THIS SURVEY IS TO BLAZE AND POST LINES "J-Y", "Y-Z" AND "Z-D". ALSO MONUMENTS "Y" AND "Z" WERE SET IN THIS SURVEY. MONUMENTS "A", "C", "D", "E", "F", "H" AND "J" WERE FOUND IN THE FIELD AND USED AS CONTROL FOR THIS SURVEY. A SERIES OF RANDOM E.D.M. CONTROL TRAVERSES, USING A WILD T-16 THEODOLITE AND A DI-4L E.D.M., WERE RUN BETWEEN THE CONTROLLING CORNERS FOUND IN THE FIELD. MONUMENT "Y" WAS SET AT THE POINT OF INTERSECTION OF LINES "B-E" AND "H-J". THE S.W. 1/16 CORNER, MONUMENT "Z", WAS SET AT THE POINT OF INTERSECTION OF THE NORTH-SOUTH AND EAST-WEST CENTERLINES OF SAID SW 1/4. OFFSETS WERE COMPUTED, FROM THE E.D.M. CONTROL TRAVERSE, TO THE TRUE PROPERTY LINES.

"H" POINT ON EAST LINE D.L.C. NO. 37

FD. 5/8" IRON PIN SET IN COUNTY SURVEY M134-66
11" ASH, S62°W, 12.0' (SCRIBE VIS.), 2000 B.T.
13" ASH, N34°W, 15.3' (SCRIBE VIS.), 2000 B.T.

"J" W.C. TO N.E. CORNER ELIJAH ESTES D.L.C. 37

FD. 1979 DOUGLAS COUNTY IRON PIPE & BRASS CAP
BRASS CAP STAMPED "W.C." TO D.L.C. NO. 37
TRUE CORNER BEARS SOUTH, 10.00'
36" FIR STP., SOUTH, 10.00' (NO MARKS), COR. TREE
20" FIR, N51°E, 85.0' (SCAR VIS.), 1979 B.T.

"A" S.W. CORNER SECTION 25

FD. 1997 B.L.M. IRON PIPE AND BRASS CAP
13" OAK, S16°W, 159.7' (SCRIBE VIS.), 1997 B.T.
30" FIR, N86°W, 73.3' (SCRIBE VIS.), 1997 B.T.

"B" SOUTH 1/16 CORNER TO SECTIONS 25 AND 26
COMPUTED POINT. NO MONUMENT SET.