

LONE ROCK TIMBER CO.

PO BOX 1127 ROSEBURG OREGON 97470 DATE: JUNE 2000
 SECTION 11, TOWNSHIP 21 SOUTH, RANGE 4 WEST, W.M. DOUGLAS AND LANE COUNTIES, OREGON
 LONE ROCK TIMBER TRACT: WILSON 75 SCALE 1" = 300'

FILED

Date: 8-18-2000 By: JP
 This survey consists of: 2 Pgs.
 Map: M135-35B
 Narrative: _____
 Corner Rpt: _____

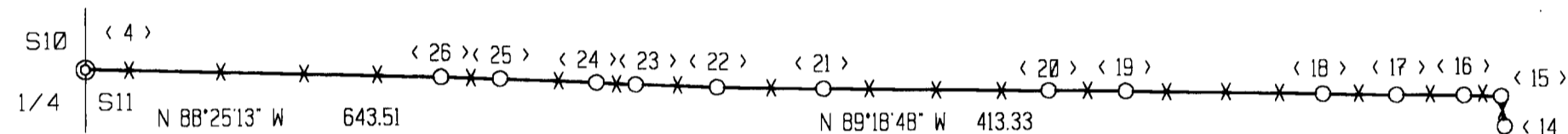
DOUGLAS COUNTY
 SURVEYOR

BASIS OF BEARING
 FROM 1975 EIMSTAD
 MAP CS 18749

REGISTERED
 PROFESSIONAL
 LAND SURVEYOR
Ken W. Hoffine
 OREGON
 JULY 16, 1987
 KEN W. HOFFINE
 2291
 EXPIRES 6-30-01

CORNER INFORMATION

- 8) PROPERTY CORNER
 SET 5/8" IRON ROD WITH YELLOW PLASTIC CAP
 MARKED LONE ROCK TIMBER PLS 2291
 -- 12" DOUGLAS FIR BEARS S54 1/4" W. 32.6 FEET.
 WE TAG TREE AND SCRIBE "BT"
- 9) PROPERTY CORNER
 SET 5/8" IRON ROD WITH YELLOW PLASTIC CAP
 MARKED LONE ROCK TIMBER PLS 2291
 -- 16" DOUGLAS FIR BEARS S24 1/2" E. 28.6 FEET.
 WE TAG TREE AND SCRIBE "BT"
- 10) PROPERTY CORNER
 SET 5/8" IRON ROD WITH YELLOW PLASTIC CAP
 MARKED LONE ROCK TIMBER PLS 2291
 -- 14" DOUGLAS FIR BEARS S24" W. 44.2 FEET.
 WE TAG TREE AND SCRIBE "BT"
- 11) PROPERTY CORNER
 SET 5/8" IRON ROD WITH YELLOW PLASTIC CAP
 MARKED LONE ROCK TIMBER PLS 2291
 -- 5" DOUGLAS FIR BEARS N18" E. 46.4 FEET.
 WE TAG TREE AND SCRIBE "BT"
 -- SE 1/16 CORNER OF SECTION 11 BEARS S0 1/2" W. 60.0 FEET
- 12) PROPERTY CORNER
 SET 5/8" IRON ROD WITH YELLOW PLASTIC CAP
 MARKED LONE ROCK TIMBER PLS 2291
 -- 16" DOUGLAS FIR BEARS S14 1/2" W. 7.7 FEET.
 WE TAG TREE AND SCRIBE "BT"
- 13) PROPERTY CORNER
 SET 5/8" IRON ROD WITH YELLOW PLASTIC CAP
 MARKED LONE ROCK TIMBER PLS 2291
 -- 20" INCENSE CEDAR BEARS S57 1/4" E. 28.3 FEET.
 WE TAG TREE AND SCRIBE "BT"
- 14) PROPERTY CORNER
 SET 5/8" IRON ROD WITH YELLOW PLASTIC CAP
 MARKED LONE ROCK TIMBER PLS 2291
 -- 11" DOUGLAS FIR BEARS N50 1/4" E. 18.0 FEET.
 THIS IS ALSO THE BEARING TREE FOR PROPERTY CORNER 15
- 15) PROPERTY CORNER
 SET 5/8" IRON ROD WITH YELLOW PLASTIC CAP
 MARKED LONE ROCK TIMBER PLS 2291
 -- 11" DOUGLAS FIR BEARS S24 1/2" E. 48.3 FEET.
 WE TAG TREE AND SCRIBE "BT". THIS IS ALSO THE BEARING TREE
 FOR PROPERTY CORNER 14
- 16) PROPERTY CORNER
 SET 5/8" IRON ROD WITH YELLOW PLASTIC CAP
 MARKED LONE ROCK TIMBER PLS 2291
 -- 18" DOUGLAS FIR BEARS S48 1/4" E. 34.3 FEET.
 WE TAG TREE AND SCRIBE "BT"
- 17) PROPERTY CORNER
 SET 5/8" IRON ROD WITH YELLOW PLASTIC CAP
 MARKED LONE ROCK TIMBER PLS 2291
 -- 10" DOUGLAS FIR BEARS S35 1/2" E. 22.4 FEET.
 WE TAG TREE AND SCRIBE "BT"
- 18) PROPERTY CORNER
 SET 5/8" IRON ROD WITH YELLOW PLASTIC CAP
 MARKED LONE ROCK TIMBER PLS 2291
 -- 9" DOUGLAS FIR BEARS N59 1/2" E. 27.3 FEET.
 WE TAG TREE AND SCRIBE "BT"
- 19) PROPERTY CORNER
 SET 5/8" IRON ROD WITH YELLOW PLASTIC CAP
 MARKED LONE ROCK TIMBER PLS 2291
 -- 11" INCENSE CEDAR BEARS N12" W. 10.9 FEET.
 WE TAG TREE AND SCRIBE "BT"
- 20) PROPERTY CORNER
 SET 5/8" IRON ROD WITH YELLOW PLASTIC CAP
 MARKED LONE ROCK TIMBER PLS 2291
 -- 8" INCENSE CEDAR BEARS N56 1/2" E. 7.5 FEET.
 WE TAG TREE AND SCRIBE "BT"
- 21) PROPERTY CORNER
 SET 5/8" IRON ROD WITH YELLOW PLASTIC CAP
 MARKED LONE ROCK TIMBER PLS 2291
 -- 15" DOUGLAS FIR BEARS S67" E. 28.4 FEET.
 WE TAG TREE AND SCRIBE "BT"
- 22) PROPERTY CORNER
 SET 5/8" IRON ROD WITH YELLOW PLASTIC CAP.
 MARKED LONE ROCK TIMBER PLS 2291.
 -- 9" DOUGLAS FIR BEARS S15 3/4" W. 18.7 FEET.
 WE TAG TREE AND SCRIBE "BT"
- 23) PROPERTY CORNER
 SET 5/8" IRON ROD WITH YELLOW PLASTIC CAP.
 MARKED LONE ROCK TIMBER PLS 2291.
 -- 11" DOUGLAS FIR BEARS S36 1/2" W. 26.0 FEET.
 WE TAG TREE AND SCRIBE "BT"
- 24) PROPERTY CORNER
 SET 5/8" IRON ROD WITH YELLOW PLASTIC CAP.
 MARKED LONE ROCK TIMBER PLS 2291.
 -- 12" INCENSE CEDAR BEARS N72 1/2" E. 7.9 FEET.
 WE TAG TREE AND SCRIBE "BT"
- 25) PROPERTY CORNER
 SET 5/8" IRON ROD WITH YELLOW PLASTIC CAP.
 MARKED LONE ROCK TIMBER PLS 2291.
 -- 17" DOUGLAS FIR BEARS N48" E. 29.2 FEET.
 WE TAG TREE AND SCRIBE "BT"
- 26) PROPERTY CORNER
 SET 5/8" IRON ROD WITH YELLOW PLASTIC CAP.
 MARKED LONE ROCK TIMBER PLS 2291.
 -- 9" DOUGLAS FIR BEARS S47" W. 46.9 FEET.
 WE TAG TREE AND SCRIBE "BT"



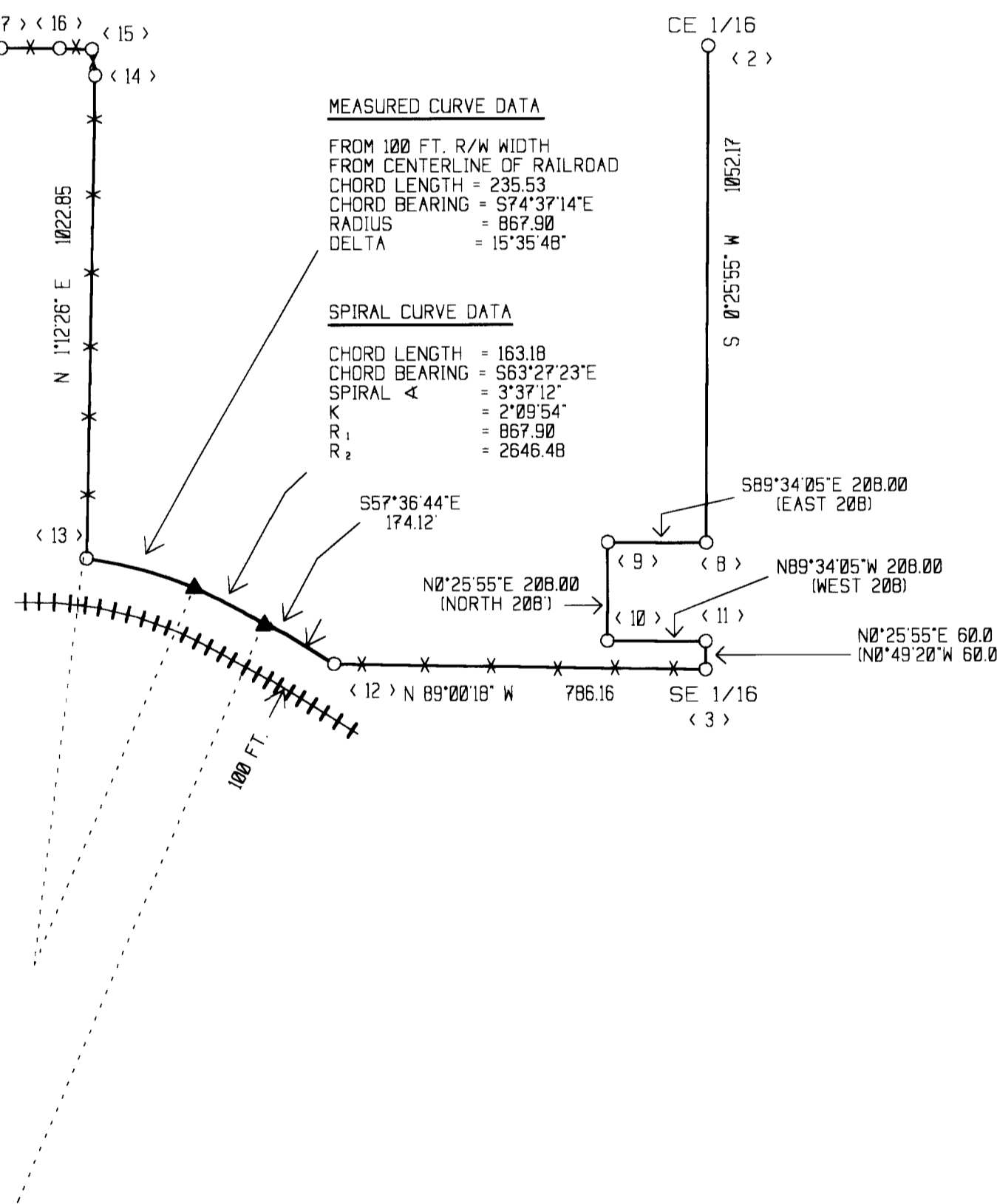
MEASURED CURVE DATA

FROM 100 FT. R/W WIDTH
 FROM CENTERLINE OF RAILROAD
 CHORD LENGTH = 235.53
 CHORD BEARING = S74°37'14"E
 RADIUS = 867.90
 DELTA = 15°35'48"

SPIRAL CURVE DATA

CHORD LENGTH = 163.18
 CHORD BEARING = S63°27'23"E
 SPIRAL Δ = 3°37'12"
 K = 2°09'54"
 R₁ = 867.90
 R₂ = 2646.48

CORNER LABEL	BEARING	DISTANCE
CE 1/16	S 0°25'55" W	1052.17
8	N 89°34'05" W	208.00
9	S 0°25'55" W	208.00
10	S 89°34'05" E	208.00
11	S 0°25'55" W	60.00
SE 1/16	N 89°00'18" W	786.16
12	N 66°23'50" W	568.28
13	N 1°12'26" E	1022.85
14	N 6°30'19" W	55.83
15	N 88°14'46" W	68.32
16	N 89°30'38" W	124.07
17	N 89°00'33" W	134.34
18	N 89°00'51" W	361.44
19	N 89°23'55" W	141.94
20	N 89°18'48" W	413.33
21	N 88°58'42" W	195.16
22	N 87°48'09" W	149.44
23	N 87°00'08" W	72.24
24	N 87°28'39" W	177.00
25	N 88°02'12" W	108.46
W 1/4	N 88°25'13" W	643.51



LEGEND:

- ⊙ - FOUND MONUMENT
- - SET 5/8" BY 40" IRON ROD WITH 2 INCH ALUMINUM CAP OR YELLOW PLASTIC CAP
- ▲ - COMPUTED POINT
- - PROJECTED LINES
- - PROPERTY LINES FLAGGED, BLAZED, AND PAINTED
- *** - FENCE LINES FLAGGED, BLAZED, AND PAINTED
- ++++ - RAILROAD TRACK CENTERLINE
- () - DEED BEARING AND DISTANCE