

# LONE ROCK TIMBER CO.

PO BOX 1127 ROSEBURG OREGON 97470 DATE: JUNE 2000  
 SECTION 11, TOWNSHIP 21 SOUTH, RANGE 4 WEST, W.M. DOUGLAS AND LANE COUNTIES, OREGON  
 LONE ROCK TIMBER TRACT: WILSON 75 SCALE: 1" = 600'

FILED

Date: 8-18-2000 By: JP  
 This survey consists of: 2 Pgs  
 Map: M/135-35A  
 Narrative: \_\_\_\_\_  
 Corner Rpt: \_\_\_\_\_

DOUGLAS COUNTY  
 SURVEYOR

NARRATIVE

THIS SURVEY WAS CONDUCTED TO ESTABLISH PROPERTY CORNERS AND PROPERTY LINES FOR TIMBER CUTTING PURPOSES. FENCE LINES WERE ESTABLISHED OVER 50 YEARS AGO FROM THE WEST 1/4 RUNNING EASTERLY TO NEAR THE CENTER 1/4 AND THEN RUNNING SOUTHERLY TO THE RAILROAD RIGHT-OF-WAY.

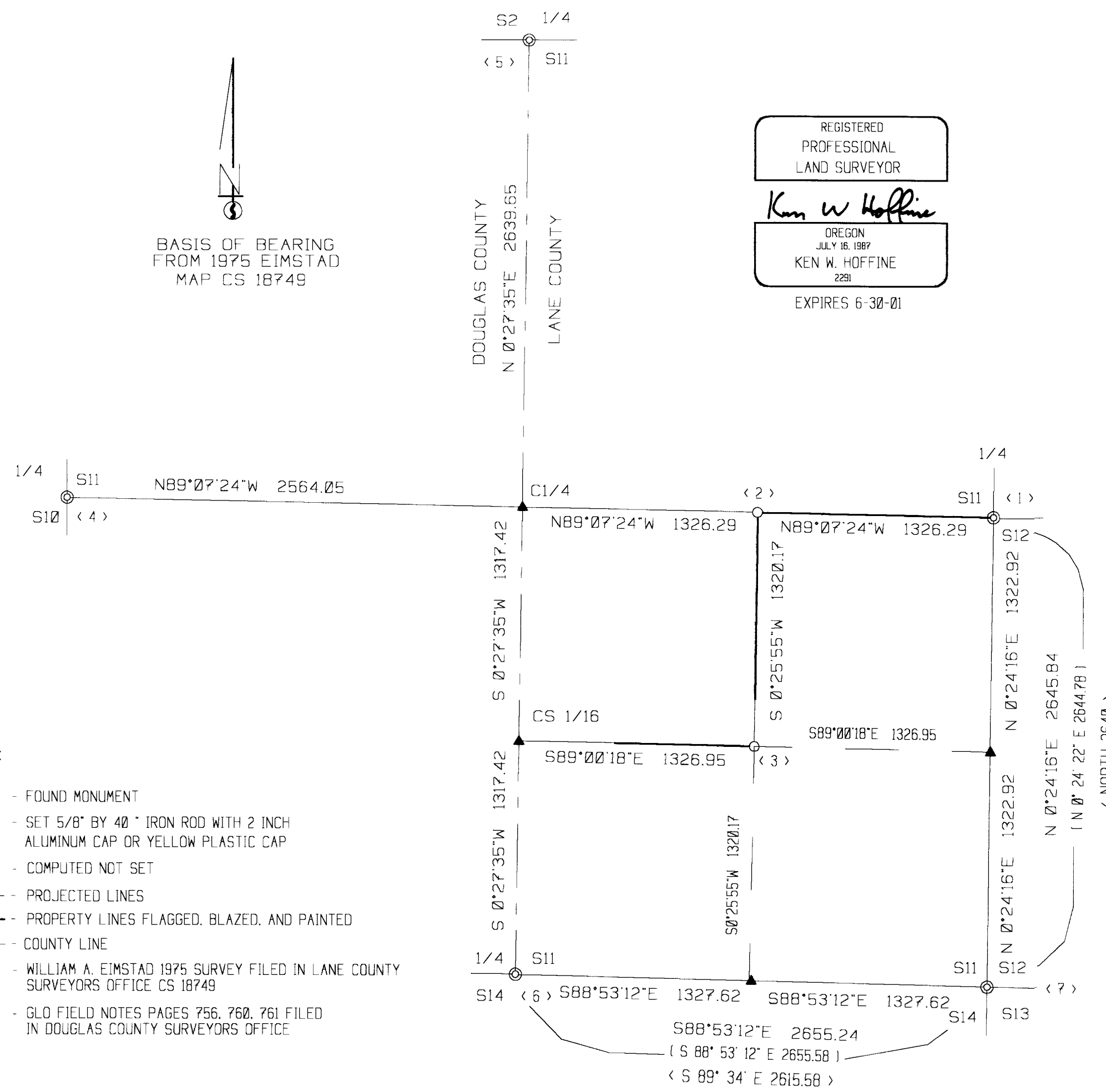
THESE FENCE LINES HAVE BEEN IN CONTINUOUS USE AS PROPERTY LINES BETWEEN ADJACENT LANDOWNERS. A PROPERTY LINE AGREEMENT FOR THESE FENCE LINES WILL BE EXECUTED BETWEEN THE NEIGHBORS BASED UPON THIS SURVEY AND MONUMENTATION AS SHOWN HEREON AFTER THE FILING OF THIS SURVEY WITH LANE AND DOUGLAS COUNTY SURVEYORS OFFICES. WE INITIATED THIS SURVEY AT THE EAST 1/4 OF SECTION 11 RUNNING RANDOM CLOSED LOOP TRAVERSES TO THE WEST 1/4, NORTH 1/4, SOUTH 1/4 AND SE SECTION CORNER OF SECTION 11. WE ALSO MADE A NETWORK OF GPS POINTS IN EACH OF OUR TRAVERSES TO CHECK OUR CONTROL NEAR EACH OF THE FOUND CORNERS. WE THEN MADE A RANDOM, CLOSED TRAVERSE NEAR PROPERTY LINES AROUND THE NORTHWEST 1/4 OF THE SOUTHEAST 1/4 OF SECTION 11.

AS PER VERBAL AGREEMENT WITH ADJACENT LANDOWNERS, WE SET IRON RODS IN THE EXISTING FENCE LINE TO MONUMENT AND PERPETUATE THE FENCE AGREEMENT LINE. WE SUBDIVIDED THE SOUTHEAST 1/4 OF SECTION 11 SETTING THE CENTER EAST 1/16 AND SOUTHEAST 1/16 CORNERS. A 208.00 FOOT SQUARE LOT 60 FEET NORTH OF THE SOUTHEAST 1/16 CORNER WAS MONUMENTED AS PER DEED DISTANCES PERPENDICULAR TO THE WEST LINE OF THE NORTHEAST 1/4 OF THE SOUTHEAST 1/4. THIS SURVEY WAS DONE WITH A NIKON DTM 450 TOTAL STATION, TRIMBLE 4000SE AND PROXR GPS RECEIVERS WITH GARY ANGIOLET, IGNACIO ROMAN AND MARK DVORSACK ASSISTING ME.

CORNER INFORMATION

THE FOLLOWING IS A RECORD OF CORNERS SET OR FOUND DURING THE COURSE OF THIS SURVEY.

- 1) THE 1/4 CORNER BETWEEN SECTION 11 AND SECTION 12 (RECORD LANE COUNTY)  
 FOUND 1991 LANE COUNTY BCIP IN GOOD CONDITION.  
 -- 19" OAK BEARS S33 1/2° E. 106.8 FEET, VISIBLE SCRIBING "CS BT" (RECORD S34°E. 106.87 FEET)  
 -- 22" DOUGLAS FIR STUMP BEARS S8 1/2° W. 17.0 FEET, PARTIAL CHOPPED OUT FACE (RECORD S8°W. 17.1 FEET)  
 -- ROTTEN DOUGLAS FIR STUMP OF INDETERMINATE SIZE BEARS N25°E. 19.5 FEET, PARTIAL SCRIBING VISIBLE (RECORD N24 1/2°E. 19.3 FEET)  
 -- 16" CEDAR BEARS N15 1/4° E. 25.0 FEET, HEALED FACE (RECORD N14 1/2°E. 25.17 FEET)  
 -- 6" X 10" X 10" STONE BEARS S75 1/4° E. 4.2 FEET "CS" SCRIBED ON SOUTH FACE (RECORD S76°E. 4.1 FEET)  
 -- 17" DOUGLAS FIR WINDFALL WITH HEALED FACE AND TAG NOT MEASURED TO  
 -- 14" DOUGLAS FIR WINDFALL WITH HEALED FACE AND TAG NOT MEASURED TO  
 CORNER LIES ON FLAT GROUND WITH RECENT CLEARCUTS TO SOUTH AND EAST. A FENCE CORNER BEARS S18°E. 1.7 FEET. FENCE RUNS SOUTH AND EAST.
- 2) THE CENTER EAST 1/16 CORNER OF SECTION 11  
 SET 5/8" IRON ROD WITH 2 1/2" ALUMINUM CAP MARKED LONE ROCK TIMBER CE 1/16 S11 2000 PLS 2291.  
 -- 20" DOUGLAS FIR BEARS N19° E. 35.9 FEET, WE TAG AND SCRIBE TREE  
 -- 8" DOUGLAS FIR BEARS S8 1/4° W. 22.2 FEET, WE TAG AND SCRIBE TREE
- 3) THE SE 1/16 CORNER OF SECTION 11  
 SET 5/8" IRON ROD WITH 2 1/2" ALUMINUM CAP MARKED LONE ROCK TIMBER SE 1/16 S 11 2000 PLS 2291.  
 -- 19" INCENSE CEDAR BEARS S80 1/2° W. 9.9 FEET, WE TAG AND SCRIBE TREE  
 -- A 5/8" IRON ROD PROPERTY CORNER BEARS N0 1/2° E. 60.0 FEET
- 4) THE 1/4 CORNER BETWEEN SECTION 11 AND SECTION 10 (RECORD DOUGLAS COUNTY)  
 FOUND 5/8" IRON ROD WITH YELLOW PLASTIC CAP MARKED ROBERTS PLS 1039.  
 -- 12" DOUGLAS FIR BEARS S7 1/2° W. 13.9 FEET. (RECORD S4° W. 15.0 FEET) HEALED FACE  
 -- 15" MAPLE BEARS N25 1/2° W. 21.8 FEET. (RECORD N23° W. 22.0 FEET) HEALED FACE  
 -- 5" WHITE FIR BEARS N42 1/2° E. 28.5 FEET. (RECORD N42° E. 29.7 FEET) HEALED FACE  
 -- 12" MAPLE BEARS S84 3/4° E. 42.4 FEET. (RECORD S84° E. 45.5 FEET) HEALED FACE  
 -- A ROTTEN DOUGLAS FIR STUMP OF INDETERMINATE SIZE BEARS S46 1/4° W. 41.0 FEET, OLD CHOPPED OUT FACE. (RECORD S45° W. 40.3 FEET).  
 CORNER LIES IN BOTTOM OF DRAW IN OLD FENCE CORNER. DRAW RUNS EAST AND WEST. FENCE RUNS EAST AND SOUTH. AN ALUMINUM POST IS ALONG SIDE CORNER MONUMENT.
- 5) THE 1/4 CORNER BETWEEN SECTION 11 AND 2 (RECORD DOUGLAS COUNTY)  
 FOUND BCIP IN GOOD CONDITION MARKED T215 R4W 2 11 1983 PLS 1039.  
 -- 25" DOUGLAS FIR STUMP BEARS S70 1/4° E. 35.5 FEET.  
 WELL HEALED FACE STUMP HAS BEEN PAINTED WITH PRESERVATIVE AND COVERED WITH TIN. (RECORD N71° E. 35.8 FEET).  
 -- 21" DOUGLAS FIR STUMP BEARS N31 1/4° W. 16.4 FEET, WELL HEALED FACE. (RECORD N31°W. 16.5 FEET).  
 -- ROTTEN DOUGLAS FIR STUMP OF INDETERMINATE SIZE BEARS S41 3/4° E. 15.7 FEET (RECORD S40° E. 14.5 FEET).  
 -- ROTTEN CEDAR STUMP OF INDETERMINATE SIZE BEARS S 0 1/4° W. 21.9 FEET. (RECORD S 2°E. 21.1 FEET).  
 -- ROTTEN DOUGLAS FIR STUMP OF INDETERMINATE SIZE BEARS N45° E. 17.6 FEET (RECORD N44°E. 16.3 FEET).  
 -- 12" DOUGLAS FIR BEARS S66° E. 24.5 FEET, WE TAG AND SCRIBE TREE  
 -- 14" GRAND FIR BEARS S32 1/2°W. 24.9 FEET, WE TAG AND SCRIBE TREE  
 CORNER LIES ON GENTLE SOUTH SLOPE. A RECENT CLEARCUT IS NORTH AND SECOND GROWTH SOUTH. TWO STEEL "T" FENCE POSTS ARE SET BY CORNER.
- 6) THE 1/4 CORNER BETWEEN SECTION 11 AND SECTION 14 (RECORD DOUGLAS COUNTY)  
 FOUND 5/8" IRON ROD WITH WHITE 1/2" FIBERGLASS ROD ALONG SIDE.  
 -- 24" DOUGLAS FIR BEARS S64 1/4° E. 13.8 FEET, WELL HEALED FACE (RECORD S63° 3/4°E. 13.7 FEET)  
 -- ROTTEN DOUGLAS FIR STUMP OF INDETERMINATE SIZE BEARS S44° W. 43.2 FEET.  
 OLD CHOPPED OUT FACE. (RECORD S43°W 42.9 FEET)  
 -- 1" IRON PIPE BEARS N66° E. 5.8 FEET  
 CORNER LIES ON GENTLE NORTH FACING SLOPE. CLEARCUT UNIT TO SOUTH. 90 YEAR OLD SECOND GROWTH NORTH.
- 7) THE SECTION CORNER COMMON TO SECTIONS 11, 12, 13, 14 (RECORD LANE COUNTY)  
 FOUND 5/8" IRON ROD WITH LEVEL WITH GROUND.  
 -- 14" POPLAR STUMP IN FENCED FRONT YARD OF HOUSE AT RECORD BEARING AND DISTANCE (S47° W. 130.4 FEET)  
 -- 23" DOUGLAS FIR AT RECORD BEARING AND DISTANCE (N62° E. 37.1 FEET) HEALED FACE  
 -- NAIL IN TOP OF BOULDER AT RECORD BEARING AND DISTANCE (N39° W. 19.21 FEET).  
 CORNER LIES APPROXIMATELY 50 FEET SOUTH OF PAVED ROAD AND APPROXIMATELY 17 FEET EAST OF SMALL CREEK ON FLAT GROUND.



LEGEND:

- ⊙ - FOUND MONUMENT
- - SET 5/8" BY 40" IRON ROD WITH 2 INCH ALUMINUM CAP OR YELLOW PLASTIC CAP
- ▲ - COMPUTED NOT SET
- - PROJECTED LINES
- - PROPERTY LINES FLAGGED, BLAZED, AND PAINTED
- - COUNTY LINE
- ( ) - WILLIAM A. EIMSTAD 1975 SURVEY FILED IN LANE COUNTY SURVEYORS OFFICE CS 18749
- < > - GLO FIELD NOTES PAGES 756, 760, 761 FILED IN DOUGLAS COUNTY SURVEYORS OFFICE

MAP FILE M/135-35A

MAP FILE M/135-35A