

FILED

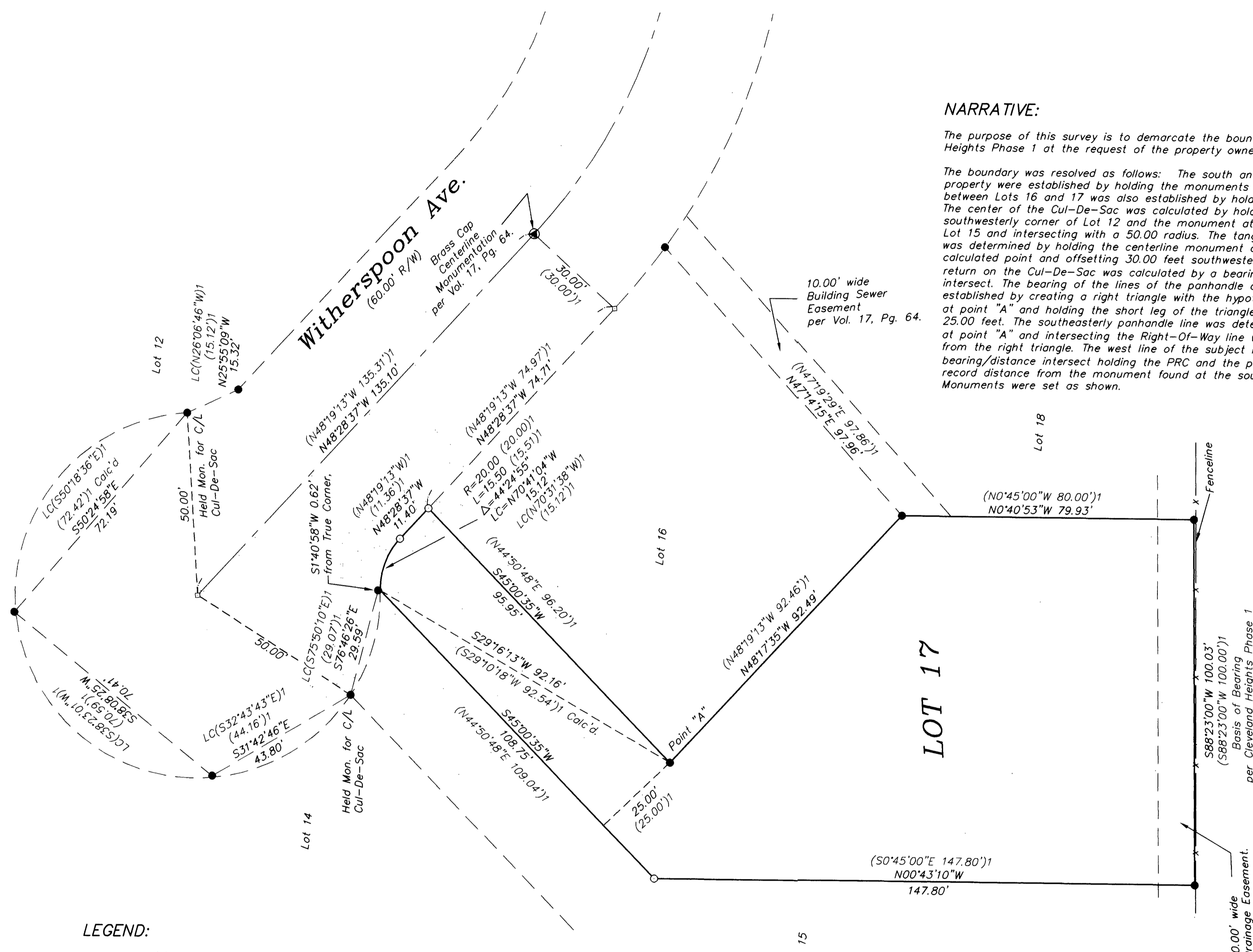
Date: 8-3-2000 By: JP
This survey consists of:
Map: M 135-27
Narrative:
Corner Ppt:

DOUGLAS COUNTY
SURVEYOR

NARRATIVE:

The purpose of this survey is to demarcate the boundary of Lot 17, Cleveland Heights Phase 1 at the request of the property owner.

The boundary was resolved as follows: The south and east lines of the subject property were established by holding the monuments found as shown. The line between Lots 16 and 17 was also established by holding the monuments found. The center of the Cul-De-Sac was calculated by holding the monument at the southwestern corner of Lot 12 and the monument at the northwest corner of Lot 15 and intersecting with a 50.00 radius. The tangent portion of Witherspoon was determined by holding the centerline monument and the previously calculated point and offsetting 30.00 feet southwesterly. The radius of the return on the Cul-De-Sac was calculated by a bearing (with offset)/distance intersect. The bearing of the lines of the panhandle of the subject lot were established by creating a right triangle with the hypotenuse being the monument at point "A" and holding the short leg of the triangle at the record distance of 25.00 feet. The southeasterly panhandle line was determined by the monument at point "A" and intersecting the Right-Of-Way line with the bearing created from the right triangle. The west line of the subject lot was established by bearing/distance intersect holding the PRC and the panhandle bearing and the record distance from the monument found at the southwest corner of the lot. Monuments were set as shown.

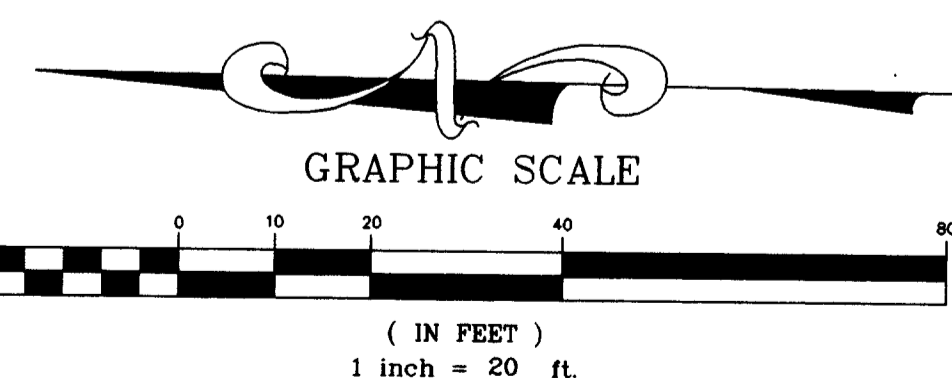


LEGEND:

- Found 5/8" I.Rod with yellow plastic cap marked "ie Eng"
- Calculated Point, No Monumentation.
- Set 5/8" x 30" reinforcing rod with yellow plastic cap marked "LAND MARK PLS 2287".

RECORD INFORMATION:

()1 Cleveland Heights Phase 1
Volume 17, Page 64.



SHEET 1 OF 1

Boundary Survey

Lying in the SE 1/4 Section 10,
Township 27 South, Range 6 West, W.M.
City of Roseburg, Douglas County, Oregon
July 20, 2000

REGISTERED
PROFESSIONAL
LAND SURVEYOR

Mark A. Heimbürger

OREGON
JULY 16, 1987
MARK A. HEIMBURGER
2287

EXPIRES JUNE 30, 2001

FOR: Land Mark Development Co.
3329 NE Stephens St.
Roseburg, Oregon 97470

Land Mark
SURVEYING & DEVELOPMENT
3329 NE Stephens Street
Roseburg, Oregon 97470
Tel (541) 677-9400
Fax (541) 677-9401

LMSI Job No. 2000-0075

MAP FILE M135-27