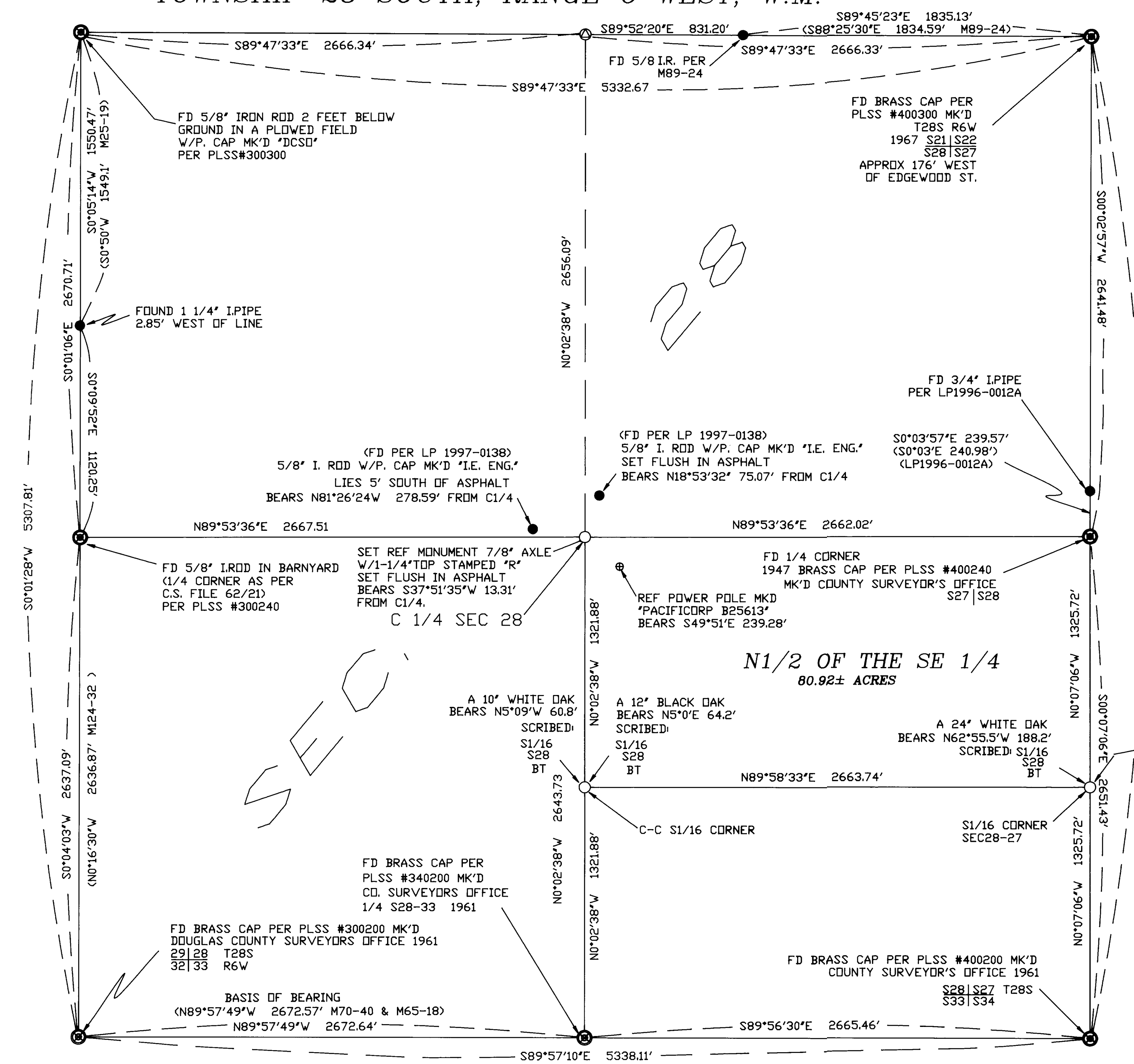


SURVEY OF SECTION 28 TOWNSHIP 28 SOUTH, RANGE 6 WEST, W.M.

FILED
Date: 7-26-2000 By: JP
This survey consists of:
Map: M135-24
Narrative:
Corner Ppt:
**DOUGLAS COUNTY
SURVEYOR**

MAP FILE M135-24



NARRATIVE:

THE PURPOSE OF THIS SURVEY WAS TO ESTABLISH THE PROPERTY LINES OF THE NORTH 1/2 OF THE SOUTH EAST 1/4 OF SECTION 28, TWP28S, R6W, AS CALLED FOR ON THAT PORTION OF THE DEED DESCRIBED IN INSTRUMENT NUMBER 96-04636 OF THE DOUGLAS COUNTY DEED RECORDS.

ALL FOUR SECTION CORNERS AND THREE 1/4 CORNERS OF SECTION 28 WERE FOUND AND TIED BY CLOSED TRAVERSE AND WERE USED TO CONTROL THIS SURVEY. THE BASIS OF BEARING IS THE SOUTH SECTION LINE BETWEEN THE SW SECTION CORNER AND THE SOUTH 1/4 CORNER OF SECTION 28.

THE N1/4 WAS NOT SET WHEN SECTION 28 WAS ORIGINALLY SUBDIVIDED AS ITS POSITION FELL IN THE SOUTH UMPQUA RIVER. A MEANDER CORNER WAS SET PER M28-47 BUT WAS NOT FOUND. A CALCULATED POINT MIDWAY BETWEEN THE NORTH SECTION CORNERS WAS USED FOR THE N1/4 CORNER POSITION. INTERSECTING STRAIGHT LINES BETWEEN OPPOSING 1/4 CORNERS WERE USED TO ESTABLISH THE C1/4 POSITION OF SECTION 28. A 5/8" IRON ROD WAS SET WITH A PLASTIC CAP MARKED "LS 2798". TWO MONUMENTS PREVIOUSLY SET PER LAND PARTITION 1997-0138 WERE USED TO WITNESS THE CENTER 1/4 CORNER. THE CENTER S1/16 CORNER WAS SET MIDPOINT BETWEEN THE C1/4 CORNER AND THE S1/4 CORNER SECTION 28 WITH TWO BEARING TREES SCRIBED. THE S1/16 CORNER SEC28-27 WAS SET MIDPOINT BETWEEN THE EAST 1/4 CORNER SECTION 28 AND THE SOUTH EAST SECTION CORNER SECTION 28 WITH TWO BEARING TREES SCRIBED.

THIS SURVEY WAS PERFORMED BY DAVID BEEDLE AND OLEN EDWARDS USING A SOKKIA SET 4BII. COMPUTATIONS AND DRAFTING BY DAVID BEEDLE

LEGEND

- SET 5/8"X30" IRON ROD W/PC "LS 2798"
- ⊙ FOUND SEC OR 1/4 CORNER AS NOTED
- FOUND I. ROD OR PIPE AS NOTED
- ⊙ CALCULATED POINT

REGISTERED
PROFESSIONAL
LAND SURVEYOR
David J. Beedle
OREGON
JANUARY 21, 1987
DAVID J. BEEDLE
#2798
EXPIRES 12-31-01

DAVID J. BEEDLE PROFESSIONAL LAND SURVEYING	TEL 541-874-3258 183 TRAYLOR ROAD RIDDLE, OREGON 97489	SCALE: 1"=400' DATE: JUNE 23, 2000	SURVEYED FOR: LYLE JEFFRIES L-DON CORPORATION PO BOX 2285 WINSTON, OR 97496
			SURVEY OF SECTION 28, T28S, R6W, W.M. TO MONUMENT N 1/2 OF SE 1/4 IN DOUGLAS COUNTY, OREGON

MAP FILE M135-24