

SURVEY FOR:
STATE OF OREGON - DEPARTMENT OF FORESTRY
SECTIONS 35 & 36, T.32S., R.5W., W.M.

DOUGLAS COUNTY, OREGON
THEODOLITE AND EDM SURVEY BY:
J.M. MCINTOSH, T. VAN VLEET
AND R.C. HALL
DRAWN BY: T. VAN VLEET
MAY 8, 2000
SCALE 1" = 400'

SURVEY BY:
REGISTERED
PROFESSIONAL
LAND SURVEYOR
James M. McIntosh
OREGON
JULY 13, 1984
JAMES M. MCINTOSH
2103

JAMES M. MCINTOSH
379 16TH AVE.
COOS BAY, OREGON

EXPIRATION DATE OF CERTIFICATE 12-31-00

FILED

Date: 6-9-2000 By: JP

This survey consists of:

Map: M135-1

Narrative: _____

Corner Rpt: _____

DOUGLAS COUNTY
SURVEYOR

MAP FILE M135-1

SECTION CORNER FOUND
3/4" IRON ROD, 1964 (IN PLACE)
8" LIVE OAK (1871) N30°E 33 LKS (NOW 22" IN PLACE, PARTIAL SCRIBES VISIBLE BTT)
6" LIVE OAK (1871) S70°E 10 LKS (NOW 10" IN PLACE, FACE CLOSED BTT)
6" LIVE OAK (1871) S75°W 22 LKS (NOW 10" IN PLACE, PARTIAL SCRIBES VISIBLE ON ROTTED FACE BTT)
6" LIVE OAK (1871) N22°W 23 LKS (NOW 11" IN PLACE, PARTIAL SCRIBES VISIBLE BTT)

REWITNESSED

WP S32°E 3.1' TO BASE
WP S70°W 3.2' TO BASE

1/4 CORNER FOUND
DCS P/C (1967) WITH 1 1/2" IP ON EAST SIDE (IN PLACE)
6" YEW (1901) N42°E 21 LKS (NOW 14" IN PLACE, FACE OPEN AND ROTTED, NO SCRIBES VISIBLE)
15" FIR (1967) N68°E 60.0' (NOW 22" X 1' HIGH ROTTED STUMP IN PLACE)
6" W. FIR (1976) S70°E 13.7' (NOW 19" DOUGLAS FIR IN PLACE, FACE CLOSED)

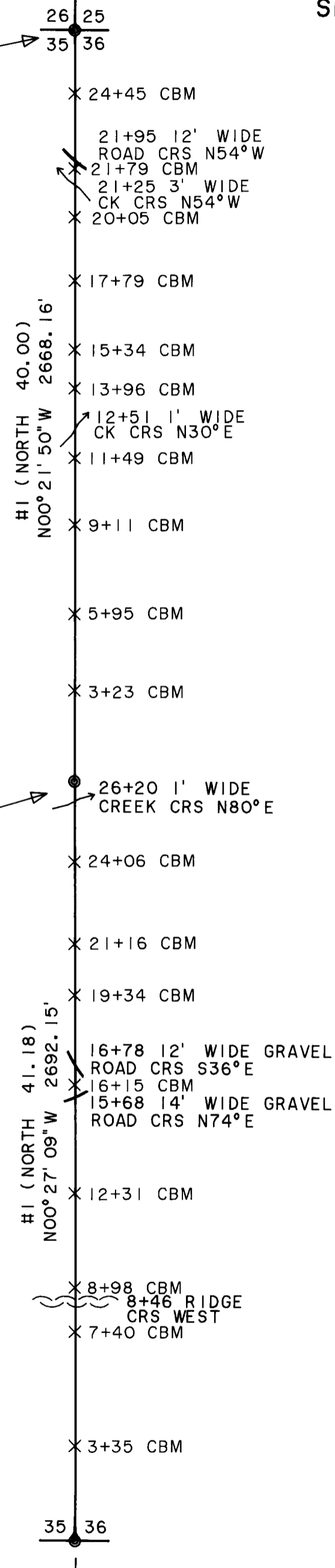
REWITNESSED

WP N50°W 4.2' TO BASE
WP N36°E 4.2' TO BASE
16" FIR S48°W 17.5' TO ALUMINUM NAIL IN BT FACE SCRIBED (1/4S35BT) BTT

CLOSING CORNER FOUND
DCS P/C, 1967 (IN PLACE)
16" FIR (1901) N21°E 60 LKS (NOW 39" IN PLACE, FACE CHOPPED OPEN AND PITCHED OVER BTT)
40" P. PINE (1901) N81°W 58 LKS (NOW 59" X 1' HIGH STUMP IN PLACE, BTT NAILED TO TOP OF STUMP)
11" FIR (1967) N17°E 8.3' (NOW 17" IN PLACE, FACE CLOSED BTT)
9" MADRONE (1967) N31°W 8.3' (NOW 9" IN PLACE, FACE CLOSED BTT)

REWITNESSED

WP N46°E 2.7' TO BASE
WP N57°W 2.7' TO BASE



SURVEY FOR:
STATE OF OREGON - DEPARTMENT OF FORESTRY
SECTIONS 35 & 36, T.32S., R.5W., W.M.

DOUGLAS COUNTY, OREGON
THEODOLITE AND EDM SURVEY BY:
J.M. MCINTOSH, T. VAN VLEET
AND R.C. HALL
DRAWN BY: T. VAN VLEET
MAY 8, 2000
SCALE 1" = 400'

SURVEY BY:
REGISTERED
PROFESSIONAL
LAND SURVEYOR
James M. McIntosh
OREGON
JULY 13, 1984
JAMES M. MCINTOSH
2103

JAMES M. MCINTOSH
379 16TH AVE.
COOS BAY, OREGON

EXPIRATION DATE OF CERTIFICATE 12-31-00

FILED

Date: 6-9-2000 By: JP

This survey consists of:

Map: M135-1

Narrative: _____

Corner Rpt: _____

DOUGLAS COUNTY
SURVEYOR

MAP FILE M135-1

SECTION CORNER FOUND
3/4" IRON ROD, 1964 (IN PLACE)
8" LIVE OAK (1871) N30°E 33 LKS (NOW 22" IN PLACE, PARTIAL SCRIBES VISIBLE BTT)
6" LIVE OAK (1871) S70°E 10 LKS (NOW 10" IN PLACE, FACE CLOSED BTT)
6" LIVE OAK (1871) S75°W 22 LKS (NOW 10" IN PLACE, PARTIAL SCRIBES VISIBLE ON ROTTED FACE BTT)
6" LIVE OAK (1871) N22°W 23 LKS (NOW 11" IN PLACE, PARTIAL SCRIBES VISIBLE BTT)

REWITNESSED

WP S32°E 3.1' TO BASE
WP S70°W 3.2' TO BASE

1/4 CORNER FOUND
DCS P/C (1967) WITH 1 1/2" IP ON EAST SIDE (IN PLACE)
6" YEW (1901) N42°E 21 LKS (NOW 14" IN PLACE, FACE OPEN AND ROTTED, NO SCRIBES VISIBLE)
15" FIR (1967) N68°E 60.0' (NOW 22" X 1' HIGH ROTTED STUMP IN PLACE)
6" W. FIR (1976) S70°E 13.7' (NOW 19" DOUGLAS FIR IN PLACE, FACE CLOSED)

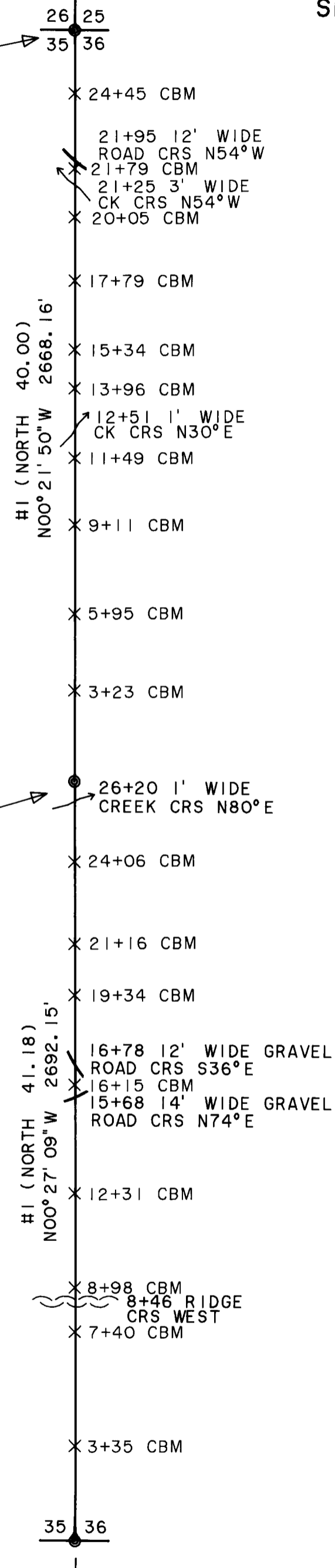
REWITNESSED

WP N50°W 4.2' TO BASE
WP N36°E 4.2' TO BASE
16" FIR S48°W 17.5' TO ALUMINUM NAIL IN BT FACE SCRIBED (1/4S35BT) BTT

CLOSING CORNER FOUND
DCS P/C, 1967 (IN PLACE)
16" FIR (1901) N21°E 60 LKS (NOW 39" IN PLACE, FACE CHOPPED OPEN AND PITCHED OVER BTT)
40" P. PINE (1901) N81°W 58 LKS (NOW 59" X 1' HIGH STUMP IN PLACE, BTT NAILED TO TOP OF STUMP)
11" FIR (1967) N17°E 8.3' (NOW 17" IN PLACE, FACE CLOSED BTT)
9" MADRONE (1967) N31°W 8.3' (NOW 9" IN PLACE, FACE CLOSED BTT)

REWITNESSED

WP N46°E 2.7' TO BASE
WP N57°W 2.7' TO BASE



SURVEY NARRATIVE TO COMPLY WITH PARAGRAPH 209.250 OREGON REVISED STATUTES

LEGEND

- DCS P/C = DOUGLAS COUNTY SURVEYOR 1 1/2" IRON POST WITH BRASS CAP
- ⊙ = MONUMENT FOUND
- WP = ORANGE CARSONITE MARKER CBM-250 LABELED WITNESS POST
- ⊗ = ORANGE CARSONITE MARKER CBM-250 LABELED BOUNDARY MARKER
- ⊕ = TRUE BLAZED AND POSTED
- IP = IRON PIPE
- BT = BEARING TREE
- BTT = BEARING TREE TAG
- CRS = COURSE
- P. PINE = PONDEROSA PINE
- W. FIR = WHITE FIR
- HI () = RECORD BEARING AND DISTANCE IN CHAINS OSCAR F. THIEL, 1901, CONTRACT NO. 729

PROCEDURE

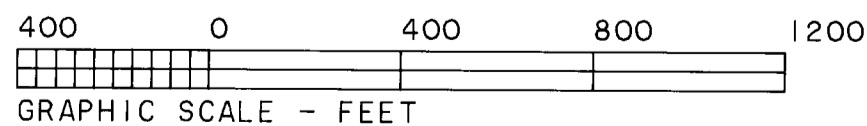
A RANDOM TRAVERSE, USING A WILD T1000 THEODOLITE AND A DI 1600 EDM, WAS USED TO CONNECT CONTROLLING CORNERS. BEARING AND DISTANCE WERE COMPUTED AND OFFSETS CALCULATED TO POINTS ON TRUE LINE FOR CARSONITE BOUNDARY MARKERS. ALL CORNER ACCESSORIES WERE MARKED AS OUTLINED IN THE "MANUAL OF INSTRUCTIONS FOR THE SURVEY OF PUBLIC LANDS OF THE U.S." 1973. BEARINGS TO ACCESSORIES WERE TAKEN WITH A HAND COMPASS SET AT 20° EAST MAGNETIC DECLINATION. DISTANCES WERE MEASURED TO AN ALUMINUM NAIL IN BT FACE. FOR A DETAILED REPORT ON FOUND CORNERS SEE COUNTY RECORDS.

PURPOSE

TO SEPARATE STATE FOREST LAND AND PRIVATE LANDS LOCATED IN SECTION 36, TOWNSHIP 32 SOUTH, RANGE 5 WEST, WILLAMETTE MERIDIAN.

BASIS OF BEARING

SOLAR OBSERVATION - HOUR ANGLE METHOD



MAP FILE M135-1