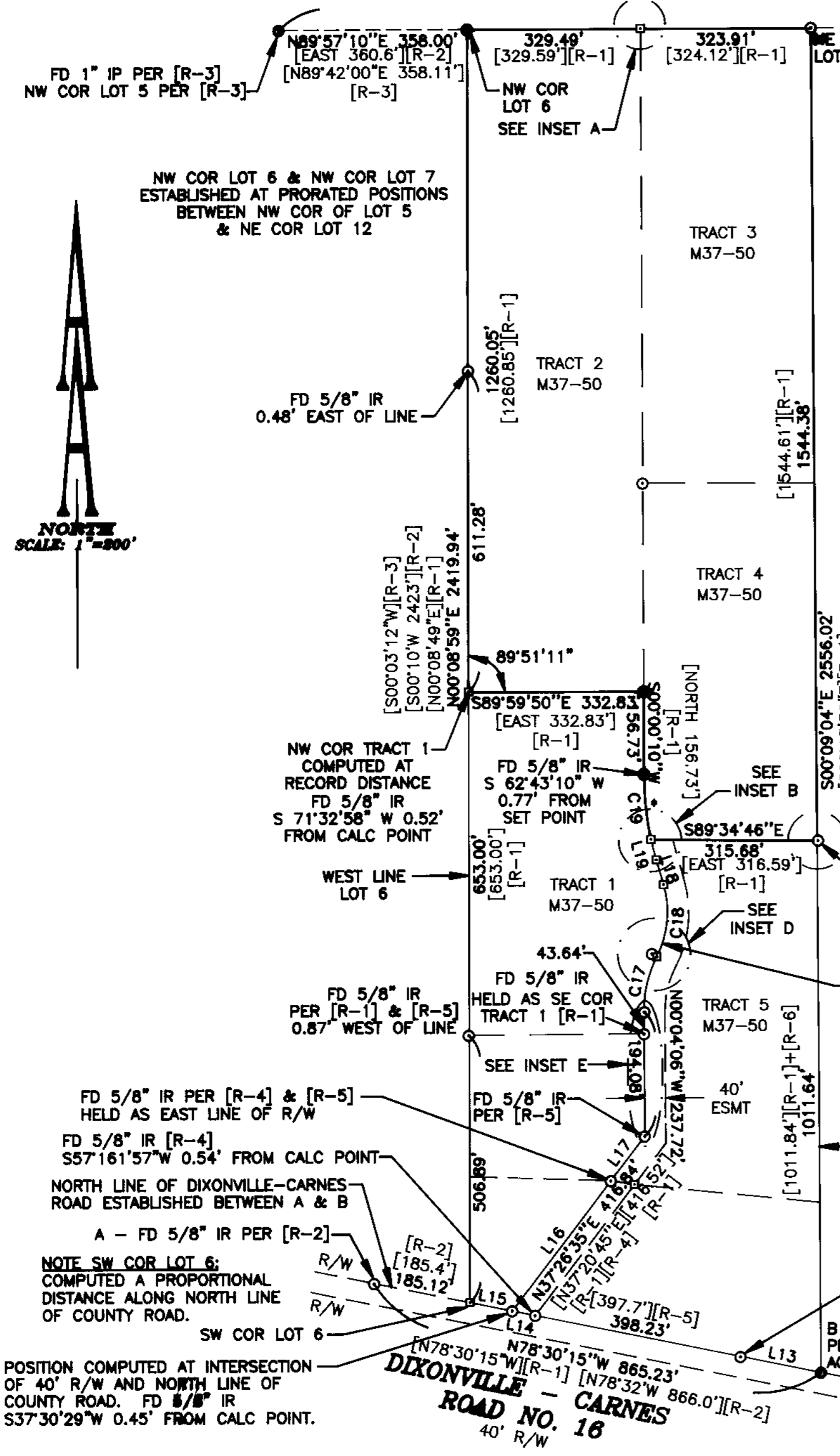


PROPERTY SURVEY
FOR DUANE AND JESSIE BROWN
PORTIONS OF LOTS 6 & 7, BLOCK 1, GLENGARRY FRUIT LANDS
S 1/2 OF SECTION 13 & N 1/2 OF SECTION 24, TOWNSHIP 28 SOUTH, RANGE 6 WEST OF THE WILLAMETTE MERIDIAN
JANUARY 2000

MAP FILE M134-9



LINE TABLE

NUMBER	BEARING & DISTANCE
L13	N78°30'15"W-155.63'
	[N78°31'47"W-155.81'] [R-5]
L14	N78°30'15"W-44.25'
	[N78°31'47"W-44.45'] [R-4] [R-5]
L15	N78°30'15"W-82.00'
	[N78°31'47"W-82.12'] [R-1] [R-4] [R-5]
L16	N37°26'35"E-310.53'
	[N37°20'45"E-310.22'] [R-1] [R-4] [R-5]
L17	N37°26'35"E-106.31'
	[N37°20'45"E-106.30'] [R-1] [R-5]
L18	N16°14'58"W-48.80'
	[N16°11'30"W-48.80'] [R-1]
L19	N14°18'58"W-40.01'
	[N14°15'30"W-40.01'] [R-1]

CURVE TABLE

NUMBER	DELTA	R'	L'
C17	27°19'40"	224.63	107.14
[R-1]	[27°19'40"]	[224.63]	[107.14]
C18	43°30'30"	186.10	141.32
[R-1]	[43°30'30"]	[186.10]	[141.32]
C19	12°07'59"	592.96	125.57
[R-1]	[16°11'30"]	[592.96]	[127.55]

NARRATIVE:
THE PURPOSE OF THIS SURVEY IS TO ESTABLISH THE EXISTING EXTERIOR BOUNDARIES OF TRACTS 2,3 AND 4 AS SHOWN ON M37-50. THIS IS BEING DONE TO HAVE A RESOLVED BOUNDARY TO FURTHER SUBDIVIDE THESE TRACTS. WHEN TYING THE EXTERIOR MONUMENTS IT BECAME OBVIOUS THAT SEVERAL FOUND MONUMENTS WERE NOT IN THEIR RECORD POSITIONS. THIS REQUIRES THAT WE RESOLVE THE BOUNDARY PRIOR TO FILING THE SUBDIVISION MAP TO CLEARLY EXPLAIN THE RESOLVED BOUNDARY.

THE EXTERIOR BOUNDARIES OF THESE TRACTS ARE PORTIONS OF LOTS 6, AND 7 OF BLOCK 1 GLENGARRY FRUIT LANDS. THE NORTH LINE OF THESE TRACTS WERE ESTABLISHED BETWEEN THE NW CORNER OF LOT 5 AND THE NE CORNER OF LOT 12 BLOCK 1 OF GLENGARRY FRUITLANDS. THE EAST AND WEST LINES WERE ESTABLISHED AT THE PROPORTIONAL DISTANCE FROM RECORD. THE SOUTHWEST CORNER OF LOT 7 IS AN ACCEPTED FOUND MONUMENT. THE SOUTHWEST CORNER OF LOT 6 WAS ESTABLISHED BY PROPORTIONAL MEASUREMENT ALONG THE NORTH LINE OF THE DIXONVILLE-CARNES COUNTY ROAD BETWEEN FOUND MONUMENTS. REFER HERON TO NOTES ALONG THE EXISTING 40 FOOT ACCESS RIGHT OF WAY FOR DETAILS AND NOTES ON THE RESOLUTION OF THE LINE.

BASIS OF BEARING IS THE NORTH LINE OF DIXONVILLE-CARNES COUNTY ROAD BETWEEN FOUND MONUMENTS AS N78°30'15"W PER M37-50 FOR BEARING OF THE NORTH LINE OF COUNTY ROAD NO. 16.

***NOTE:**
RECORD WAS HELD FROM NORTH AND FROM SOUTH. RADIUS OF CURVE WAS HELD FROM RECORD M37-50 MAKING A NONTANGENT CURVE. CHORD = N05°37'08"W 125.33'

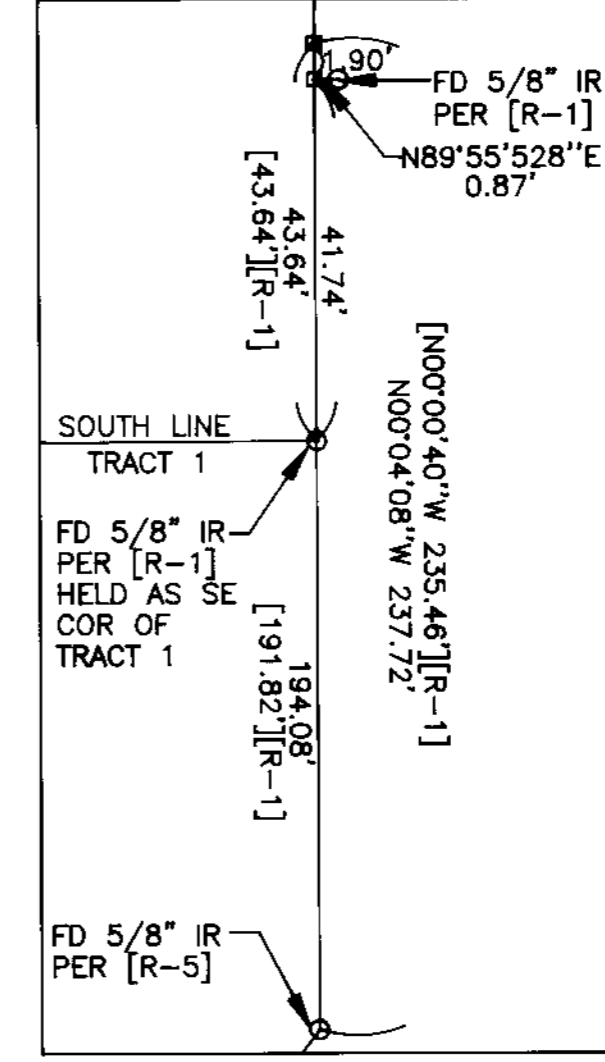
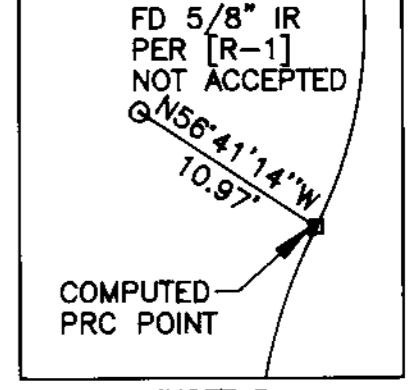
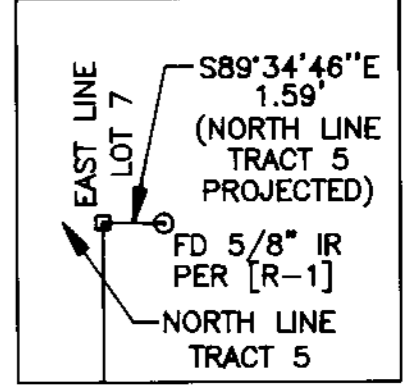
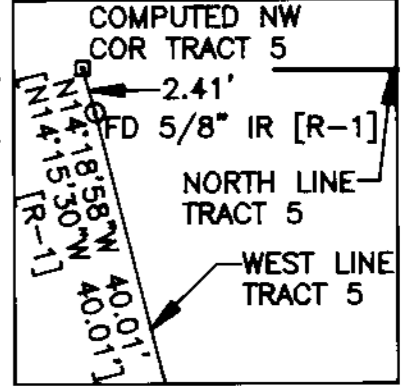
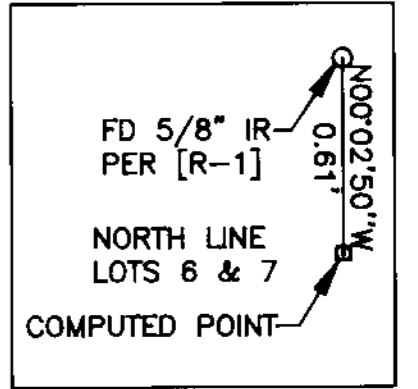
FD 5/8" IR HELD AS REPRESENTING THE NORTH LINE OF TRACT 5 PER M37-50. NORTH LINE OF TRACT 5 WAS ESTABLISHED BETWEEN THIS FD MONUMENT & THE COMPUTED POINT AT THE NW COR OF TRACT 5.

NOTE NW COR TRACT 5:
THE NW CORNER OF TRACT 5 WAS ESTABLISHED BY HOLDING RECORD FROM THE SE CORNER OF TRACT 1. HOLDING RECORD FITS THE NORTH LINE OF TRACT 5 BETTER THAN THE FOUND 5/8" ROD SO IT WAS HELD AS BEST RESOLUTION.

RECORD INFORMATION:

[R-1]	M37-50
[R-2]	M5-42
[R-3]	M88-45A
[R-4]	CS51-314-6
[R-5]	CS55-40-3
[R-6]	C51-290-1

- LEGEND:**
- Set 5/8" x 30" Iron Rod with Yellow Plastic Cap marked "AA SURVEYING INC."
 - Found 5/8" Iron Rod, unless otherwise noted
 - Found 1" Iron Pipe
 - Calculated Point
 - [] Embraces Record Data as Indicated



REGISTERED PROFESSIONAL LAND SURVEYOR
Edward Hall
OREGON
JANUARY 16, 1998
EDWARD HALL
2741
EXP. DATE: 06-30-01

AA SURVEYING SERVICE, INC.
ENGINEERING-SURVEYING-PLANNING
3076 NE DIAMOND LAKE BLVD.
ROSEBURG, OREGON 97470
TEL (541)672-2086
FAX (541)672-0811

AA# 2207.99\22079901.DWG
JANUARY 19, 2000
MAP FILE M134-9