

MAP FILE M134-80

SURVEY BY:
REGISTERED
PROFESSIONAL
LAND SURVEYOR

James M. McIntosh
OREGON
JULY 13, 1984
JAMES M. MCINTOSH
2103

JAMES M. MCINTOSH
379 16TH AVE.
COOS BAY, OREGON

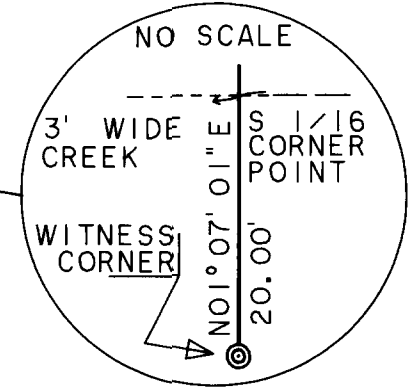
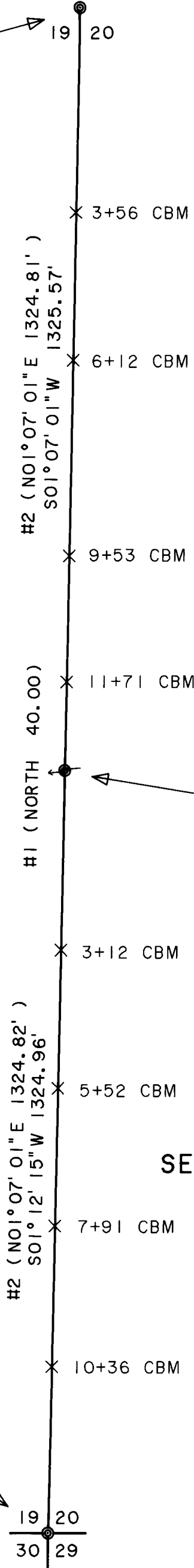
EXPIRATION DATE OF CERTIFICATE 12-31-00

FILED
Date: 6-8-2000 By: JP
This survey consists of:
Map: M134-80
Narrative: _____
Corner Rpt: _____
DOUGLAS COUNTY
SURVEYOR

1/4 CORNER FOUND
12" FIR (1978) CORNER TREE (NOW 21" IN PLACE,
BOTH FACES CLOSED, YMLP)
12" FIR (1978) S35°E 36.7' (NOW 23" IN PLACE,
FACE CLOSED, YMLP)
16" FIR (1978) S50 1/2°W 39.8' (NOW 26" IN
PLACE, FACE CLOSED)
WPCP N49°E 4.1' (IN PLACE)
REWITNESSED
WP N82°E 4.8' TO BASE FROM CENTER OF TREE
WP N48°W 4.3' TO BASE FROM CENTER OF TREE

SOUTH 1/16 WITNESS CORNER FOUND
OSBF P/C (1978) IN MR (NOW IN PLACE)
13" GRAND FIR (1978) N25°W 16.9' (NOW 24" IN
PLACE, FACE CLOSED, X @ DBH, BTT)
18" FIR (1978) S57°E 52.3' (NOW 23" IN PLACE,
FACE CLOSED, X @ DBH)
WPCP S80°W 1.9' (IN PLACE)
3' WIDE CREEK NORTH 25.6' CRS S86°W FROM
S80°E (IN PLACE)
REWITNESSED
WP S41°W 2.1' TO BASE
WP N75°E 3.2' TO BASE

SECTION CORNER FOUND
2" IP (PRICE, 1955) ON EAST SIDE OF FENCE
POST (NOW 2" IP IN PLACE, FENCES MISSING,
SCRIBES COR VISIBLE ON DOWNED FENCE POST)
6" MADRONE (1955) N84 1/2°E 102 LKS (NOW 7"
IN PLACE, FACE CLOSED)
6" CHINQUAPIN (1955) S57°E 69 LKS (NOW 13"
IN PLACE, FACE CLOSED)
6" CHINQUAPIN (1955) S48°W 30 LKS (NOW 10"
IN PLACE, PARTIAL SCRIBES VISIBLE)
6" MADRONE (1955) N38 1/2°W 42 LKS (NOW 9"
IN PLACE, FACE CLOSED)
REWITNESSED
WP N56°E 2.70' TO BASE
WP N49°W 3.25' TO BASE



SURVEY NARRATIVE TO COMPLY WITH PARAGRAPH 209.250 OREGON REVISED STATUTES

LEGEND

- OSBF P/C = OREGON STATE BOARD OF FORESTRY 1 1/2" X 36" GALVANIZED IRON PIPE WITH 3" BRONZE CAP
- Ⓟ = TRUE BLAZED AND POSTED
- WPCP = 4" X 4" X 72" WHITE PAINTED CEDAR POST
- YMLP = YELLOW METAL LOCATION POSTER
- MR = MOUND OF ROCK
- IP = IRON PIPE
- WP = ORANGE CARSONITE MARKER, CBM-250 LABELED WITNESS POST
- X = ORANGE CARSONITE MARKER, CBM-250 LABELED BOUNDARY MARKER
- ⊙ = MONUMENT FOUND
- #1 () = RECORD BEARING AND DISTANCE IN CHAINS
W.H. BYARS, 1881, CONTRACT NO. 420
- #2 () = RECORD BEARING AND DISTANCE IN FEET
LLOYD D. SMITH, 1978, COUNTY SURVEY NO. M71-79

PROCEDURE

A RANDOM TRAVERSE USING A WILD T1000 THEODOLITE AND A DI 1600 EDM, WAS USED TO CONNECT CONTROLLING CORNERS. BEARING AND DISTANCE WERE COMPUTED AND OFFSETS CALCULATED TO POINTS ON TRUE LINE FOR CARSONITE BOUNDARY MARKERS. ADDITIONAL CORNER ACCESSORIES CONSISTING OF ORANGE CARSONITE WITNESS POST WERE PLACED AT EACH CORNER. BEARINGS TO ACCESSORIES WERE TAKEN WITH A HAND COMPASS SET AT 20° EAST MAGNETIC DECLINATION. FOR A DETAILED REPORT ON FOUND CORNERS SEE COUNTY RECORDS.

PURPOSE

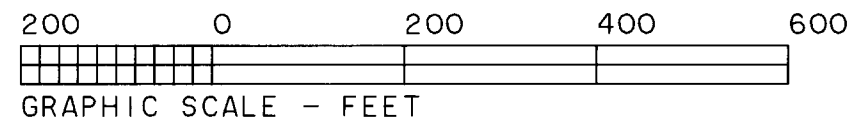
TO SEPARATE STATE FOREST LAND AND PRIVATE LANDS LOCATED IN SECTIONS 19 AND 20, TOWNSHIP 32 SOUTH, RANGE 6 WEST, WILLAMETTE MERIDIAN.

BASIS OF BEARING

OREGON STATE BOARD OF FORESTRY, 1978, SURVEY BY L.D. SMITH (COUNTY SURVEY NO. M71-79) FROM THE 1/4 CORNER OF 19 AND 20 TO THE SOUTH 1/16 WITNESS CORNER OF SECTIONS 19 AND 20, TOWNSHIP 32 SOUTH, RANGE 6 WEST, WILLAMETTE MERIDIAN.

SURVEY FOR:
STATE OF OREGON - DEPARTMENT OF FORESTRY
SECTION 19 & 20, T.32S., R.6W., W.M.

DOUGLAS COUNTY, OREGON
THEODOLITE AND EDM SURVEY BY:
J.M. MCINTOSH, T. VAN VLEET
AND R.C. HALL
DRAWN BY: T. VAN VLEET
APRIL 10, 2000
SCALE 1" = 200'



MAP FILE M134-80