

**COUNTY SURVEYORS FILE DATA  
DO NOT REMOVE FROM OFFICE**

Date: 5/31/2000 By: JP  
 This survey consists of:  
 Map: M134-75  
 Narrative: \_\_\_\_\_  
 Corner Rpt: \_\_\_\_\_

**DOUGLAS COUNTY  
SURVEYOR** JP

**NARRATIVE**, THE PURPOSE OF THIS SURVEY IS TO SET THE N.W., THE S.W. AND THE S.E. CORNERS OF TAX LOT 300. ALSO THE NORTH, WEST AND SOUTH LINES OF TAX LOT 300 WERE BLAZED AND PAINTED IN THIS SURVEY. THE CENTER 1/4 CORNER, THE EAST 1/4 CORNER, THE S.E. SECTION CORNER, THE WITNESS CORNER TO THE N.E. CORNER OF D.L.C. NO. 37 AND THE NORTH N.W. CORNER OF D.L.C. NO. 37 WERE FOUND IN THE FIELD AND USED AS CONTROL FOR THIS SURVEY. A SERIES OF RANDOM E.D.M. CONTROL TRAVERSES, USING A WILD T-16 THEODOLITE AND A DI-4L E.D.M., WERE RUN BETWEEN THE CONTROLLING CORNERS FOUND IN THE FIELD. PROPERTY CORNER "X" WAS SET ON THE EAST-WEST  $\frac{1}{2}$  OF SECTION 26, 415.50 FEET WESTERLY (DEED CALL) OF FOUND MONUMENT "B". PROPERTY CORNER "Y" WAS SET ON THE NORTH LINE OF D.L.C. NO. 37, 1205.80 FEET WESTERLY (DEED CALL) OF FOUND MONUMENT "D". PROPERTY CORNER "Z" WAS SET AT THE POINT OF INTERSECTION OF THE EAST LINE OF SECTION 26 WITH THE NORTH LINE OF D.L.C. NO. 37. A CLOSED RANDOM PROPERTY LINE TRAVERSE, USING A WILD T-16 THEODOLITE AND A DI-4L E.D.M., WAS RUN ALONG ALL PROPERTY LINES TO BE BLAZED AND PAINTED. HORIZONTAL OFFSETS WERE COMPUTED, FROM THIS RANDOM PROPERTY LINE TRAVERSE, TO THE TRUE PROPERTY LINES. PROPERTY LINES WERE MARKED, IN THE FIELD, WITH RED PAINTED BLAZES, RED PLASTIC RIBBON AND GREEN METAL FENCE POSTS.

**SURVEY FOR  
GIUSTINA RESOURCES INC.  
IN**

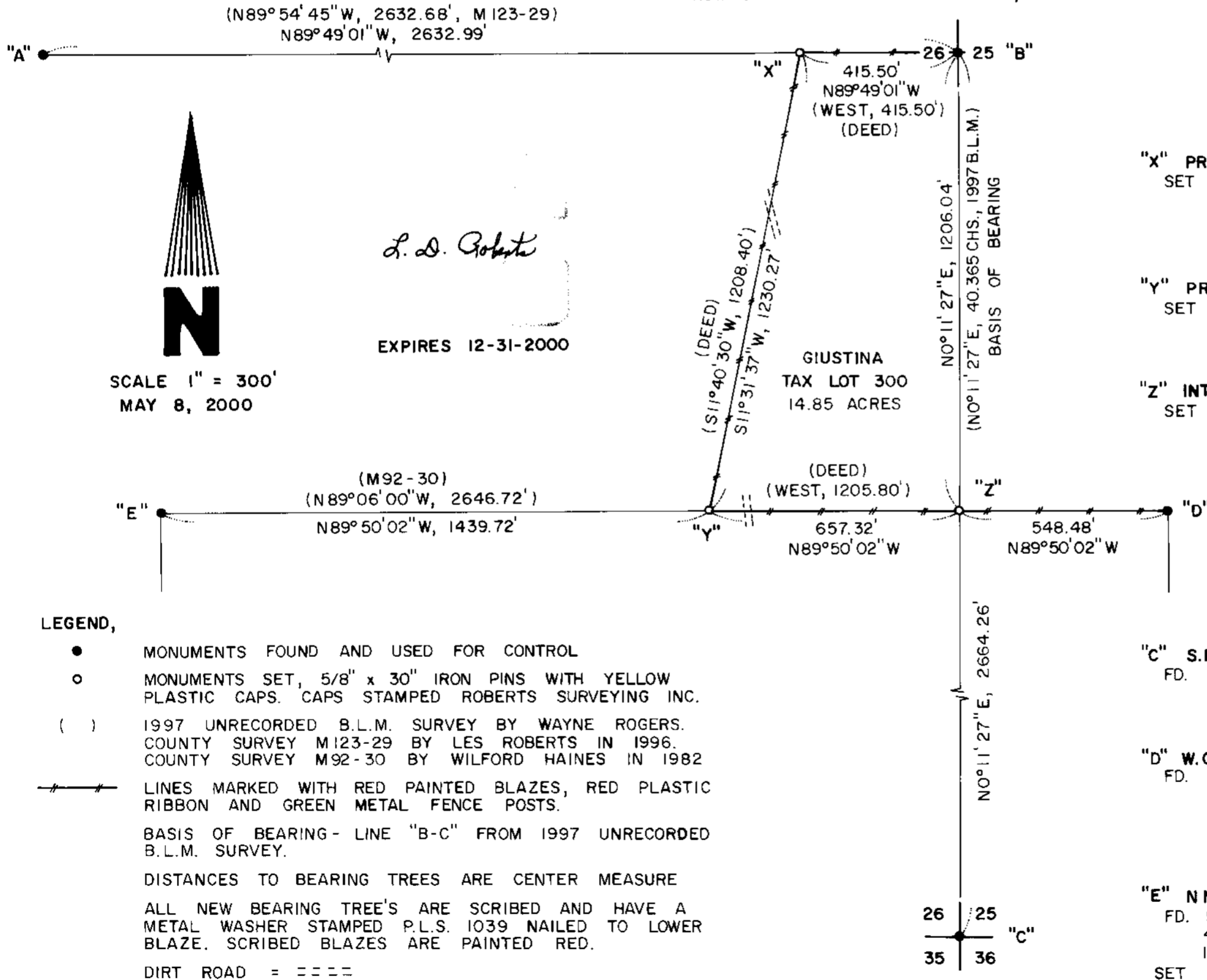
**SW 1/4 SECTION 25, T21S, R5W, W.M.  
SE 1/4 SECTION 26, T21S, R5W, W.M.  
DOUGLAS COUNTY, OREGON  
BY  
ROBERTS SURVEYING INC.  
P.O. BOX 7155  
EUGENE, OREGON 97401  
PHONE 345-1112**

**"A" CENTER 1/4 CORNER SECTION 26**

- FD. 5/8" IRON PIN SET BY LES ROBERTS IN M123-29
- 7" FIR, N78°W, 65.3' (SCRIBE VIS.), 1996 B.T.
- 13" MAPLE, N76°E, 23.5' (SCRIBE VIS.), 1996 B.T.
- 24" SPRUCE, N40°W, 31.6' (SCRIBE VIS.), 1996 B.T.
- 40" FIR, S40°W, 47.9' (SCRIBE VIS.), 1996 B.T.

**"B" EAST 1/4 CORNER SECTION 26**

- FD. 1997 B.L.M. IRON PIPE AND BRASS CAP
- 9" FIR, S70°W, 31.1' (SCRIBE VIS.), 1996 B.T.
- 13" FIR, N37°W, 2.3' (SCRIBE VIS.), 1996 B.T.
- 13" FIR, S04°E, 4.5' (SCRIBE VIS.), 1996 B.T.
- 13" FIR, N74°E, 18.1' (SCRIBE VIS.), 1996 B.T.
- AN IRON PIPE AND BRASS CAP SET IN M79-69 BEARS N86°21'45"W, 6.61'
- A 5/8" IRON PIN SET BY GERALD RILEY IN NOV. OF 1994 BEARS S11°25'30"W, 5.17'



**"X" PROPERTY CORNER SET ON EAST - WEST  $\frac{1}{2}$**   
 SET 5/8" x 30" IRON PIN WITH YELLOW PLASTIC CAP  
 5" FIR, S84°W, 20.3' (SCRIBED/METAL WASHER)  
 6" FIR, N07°W, 18.2' (SCRIBED/METAL WASHER)  
 (A 2" IRON PIPE BEARS S37°44'W, 47.35' - NO RECORD)

**"Y" PROPERTY CORNER ON NORTH LINE D.L.C. NO. 37**  
 SET 5/8" x 30" IRON PIN WITH YELLOW PLASTIC CAP  
 20" FIR, S68°E, 8.1' (SCRIBED/METAL WASHER)  
 (CORNER FALLS 4.0' NORTH OF EAST-WEST FENCE)

**"Z" INTERSECTION OF SECTION LINE AND D.L.C. LINE**  
 SET 5/8" x 30" IRON PIN WITH YELLOW PLASTIC CAP  
 8" FIR, N52°E, 25.5' (SCRIBED/METAL WASHER)  
 12" FIR, N21°W, 7.9' (SCRIBED/METAL WASHER)

**"C" S.E. CORNER SECTION 26**  
 FD. 1997 B.L.M. IRON PIPE AND BRASS CAP  
 13" OAK, S16°W, 159.7' (SCRIBE VIS.), 1997 B.T.  
 30" OAK, N86°W, 73.3' (SCRIBE VIS.), 1997 B.T.

**"D" W.C. TO N.E. CORNER ELIJAH ESTES D.L.C. NO. 37**  
 FD. 1979 DOUGLAS COUNTY IRON PIPE AND BRASS CAP.  
 BRASS CAP STAMPED "W.C. TO D.L.C. NO. 37".  
 TRUE CORNER BEARS SOUTH, 10.00'  
 36" FIR STUMP, SOUTH, 10.00' (NO MARKS), COR. TREE  
 20" FIR, N51°E, 85.0' (SCAR VIS.), 1979 B.T.

**"E" NNW CORNER ELIJAH ESTES D.L.C. NO. 37**  
 FD. 5/8" IRON PIN SET BY WILFORD HAINES IN M92-30  
 40" FIR STUB, S38°E, 65.0' (NO MARKS), 1857 B.T.  
 12" FIR SNAG, S44°E, 67.0' (SCRIBE VIS.), 1982 B.T.  
 SET 6" FIR, S70°E, 13.7' (SCRIBED/PAINTED RED)

**LEGEND,**

- MONUMENTS FOUND AND USED FOR CONTROL
- MONUMENTS SET, 5/8" x 30" IRON PINS WITH YELLOW PLASTIC CAPS. CAPS STAMPED ROBERTS SURVEYING INC.
- ( ) 1997 UNRECORDED B.L.M. SURVEY BY WAYNE ROGERS. COUNTY SURVEY M123-29 BY LES ROBERTS IN 1996. COUNTY SURVEY M92-30 BY WILFORD HAINES IN 1982
- RED PAINTED BLAZES, RED PLASTIC RIBBON AND GREEN METAL FENCE POSTS.
- BASIS OF BEARING - LINE "B-C" FROM 1997 UNRECORDED B.L.M. SURVEY.
- DISTANCES TO BEARING TREES ARE CENTER MEASURE
- ALL NEW BEARING TREE'S ARE SCRIBED AND HAVE A METAL WASHER STAMPED P.L.S. 1039 NAILED TO LOWER BLAZE. SCRIBED BLAZES ARE PAINTED RED.
- DIRT ROAD = = = =

MAP FILE M134-75

MAP FILE M134-75