

SURVEY FOR:
STATE OF OREGON - DEPARTMENT OF FORESTRY
SECTION 14, T.32S., R.6W., W.M.
DOUGLAS COUNTY, OREGON
THEODOLITE AND EDM SURVEY BY:
J.M. MCINTOSH, T. VAN VLEET
AND R.C. HALL
DRAWN BY: T. VAN VLEET
APRIL 17, 2000
SCALE 1" = 300'

SURVEY BY:
REGISTERED
PROFESSIONAL
LAND SURVEYOR

James M. McIntosh
OREGON
JULY 13, 1984
JAMES M. MCINTOSH
2103

JAMES M. MCINTOSH
379 16 TH AVE.
COOS BAY, OREGON

FILED
Date: 6-24-2000 By: JP
This survey consists of:
Map: M134-72
Narrative: _____
Corner Ppt: _____
DOUGLAS COUNTY
SURVEYOR

EXPIRATION DATE OF CERTIFICATE 12-31-00

SURVEY NARRATIVE TO COMPLY WITH PARAGRAPH 209.250 OREGON REVISED STATUTES

LEGEND

- BLM P/C = BUREAU OF LAND MANAGEMENT 2 1/2" X 28" IRON PIPE WITH BRASS CAP
- BLM SP/C = BUREAU OF LAND MANAGEMENT 2 1/2" X 28" STAINLESS STEEL POST WITH BRASS CAP
- ⊙ → = TRUE BLAZED AND POSTED
- △ = FENCE POST (FP)
- ⊙ = MONUMENT FOUND
- ⊗ = OLD BARBED WIRE FENCE
- X = ORANGE CARSONITE MARKER CBM-250 LABELED BOUNDARY MARKER
- WP = ORANGE CARSONITE MARKER CBM-250 LABELED WITNESS POST
- BT = BEARING TREE
- BTT = BEARING TREE TAG
- CRS = COURSE
- #1 () = RECORD BEARING AND DISTANCE IN CHAINS BLM (DIXON AND HARTLEY) 1989, GROUP NO. 1337

PROCEDURE

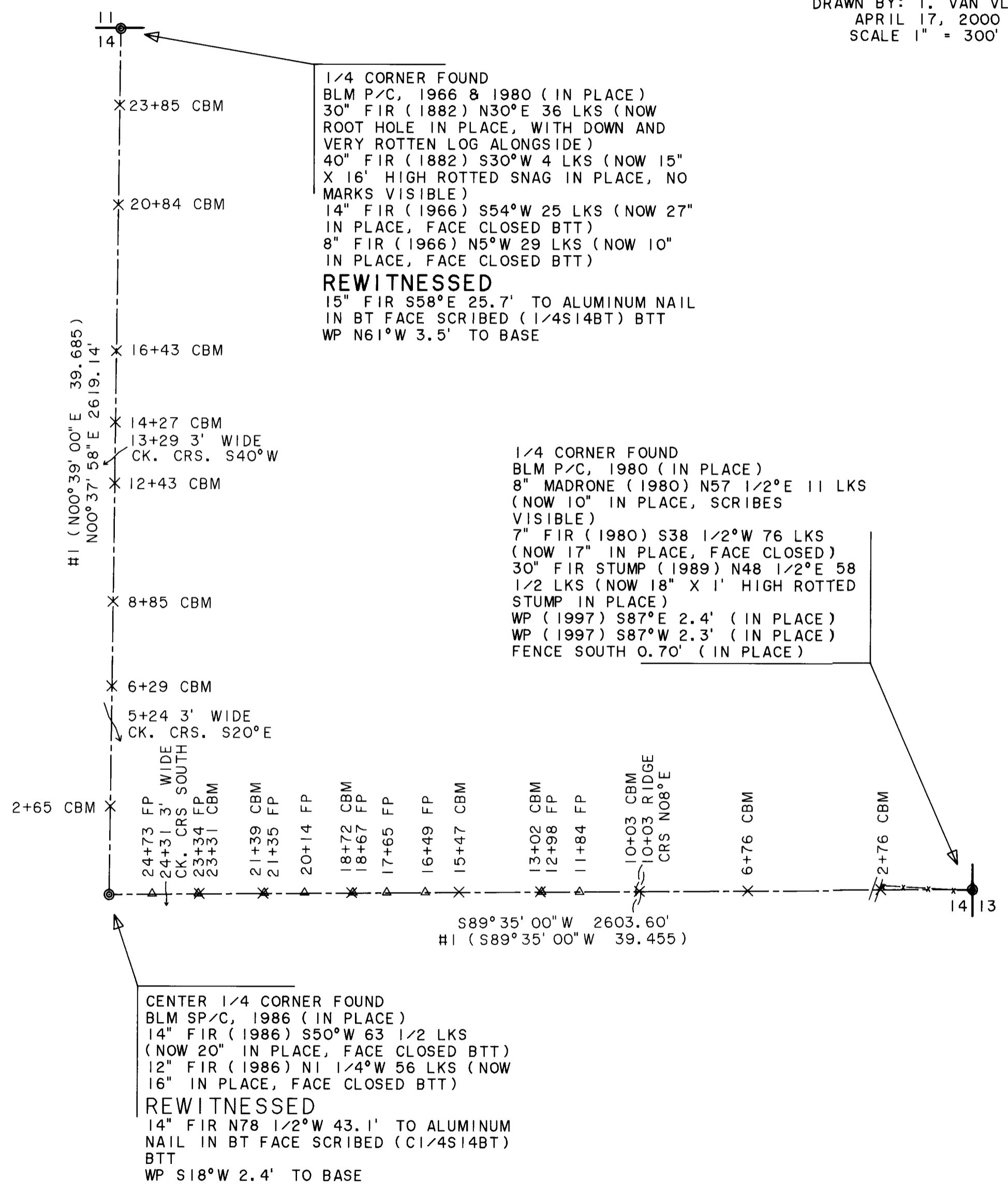
A RANDOM TRAVERSE, USING A WILD T1000 THEODOLITE AND A DI 1600 EDM, WAS USED TO CONNECT CONTROLLING CORNERS. BEARING AND DISTANCE WERE COMPUTED AND OFFSETS CALCULATED TO POINTS ON TRUE LINE FOR CARSONITE BOUNDARY MARKERS. ALL CORNER ACCESSORIES WERE MARKED AS OUTLINED IN THE "MANUAL OF INSTRUCTIONS FOR THE SURVEY OF PUBLIC LANDS OF THE U.S." 1973. BEARINGS TO ACCESSORIES WERE TAKEN WITH A HAND COMPASS SET AT 20° EAST MAGNETIC DECLINATION. DISTANCES WERE MEASURED TO AN ALUMINUM NAIL IN BT FACE. FOR A DETAILED REPORT ON FOUND CORNERS SEE COUNTY RECORDS.

PURPOSE

TO SEPARATE STATE FOREST LAND AND PRIVATE LANDS LOCATED IN SECTION 14, TOWNSHIP 32 SOUTH, RANGE 6 WEST, WILLAMETTE MERIDIAN.

BASIS OF BEARING

BLM 1989 SURVEY BY MARK D. DIXON AND HENRY E. HARTLEY (GROUP NO. 1337) FROM THE ONE QUARTER CORNER OF SECTIONS 13 AND 14 TO THE CENTER ONE QUARTER CORNER OF SECTION 14, TOWNSHIP 32 SOUTH, RANGE 6 WEST, WILLAMETTE MERIDIAN.



1/4 CORNER FOUND
BLM P/C, 1966 & 1980 (IN PLACE)
30" FIR (1882) N30°E 36 LKS (NOW
ROOT HOLE IN PLACE, WITH DOWN AND
VERY ROTTEN LOG ALONGSIDE)
40" FIR (1882) S30°W 4 LKS (NOW 15"
X 16" HIGH ROTTED SNAG IN PLACE, NO
MARKS VISIBLE)
14" FIR (1966) S54°W 25 LKS (NOW 27"
IN PLACE, FACE CLOSED BTT)
8" FIR (1966) N5°W 29 LKS (NOW 10"
IN PLACE, FACE CLOSED BTT)
REWITNESSED
15" FIR S58°E 25.7' TO ALUMINUM NAIL
IN BT FACE SCRIBED (1/4S14BT) BTT
WP N61°W 3.5' TO BASE

1/4 CORNER FOUND
BLM P/C, 1980 (IN PLACE)
8" MADRONE (1980) N57 1/2°E 11 LKS
(NOW 10" IN PLACE, SCRIBES
VISIBLE)
7" FIR (1980) S38 1/2°W 76 LKS
(NOW 17" IN PLACE, FACE CLOSED)
30" FIR STUMP (1989) N48 1/2°E 58
1/2 LKS (NOW 18" X 1' HIGH ROTTED
STUMP IN PLACE)
WP (1997) S87°E 2.4' (IN PLACE)
WP (1997) S87°W 2.3' (IN PLACE)
FENCE SOUTH 0.70' (IN PLACE)

CENTER 1/4 CORNER FOUND
BLM SP/C, 1986 (IN PLACE)
14" FIR (1986) S50°W 63 1/2 LKS
(NOW 20" IN PLACE, FACE CLOSED BTT)
12" FIR (1986) N1 1/4°W 56 LKS (NOW
16" IN PLACE, FACE CLOSED BTT)
REWITNESSED
14" FIR N78 1/2°W 43.1' TO ALUMINUM
NAIL IN BT FACE SCRIBED (C1/4S14BT)
BTT
WP S18°W 2.4' TO BASE

