

BOUNDARY SURVEY DOUGLAS COUNTY SURVEYOR
FOR GIUSTINA RESOURCES INC.
IN SECTION 36, T21S, R5W, W.M. DOUGLAS COUNTY, OREGON
BY ROBERTS SURVEYING INC
P.O. BOX 7155
EUGENE, OREGON 97401
PHONE 345-1112



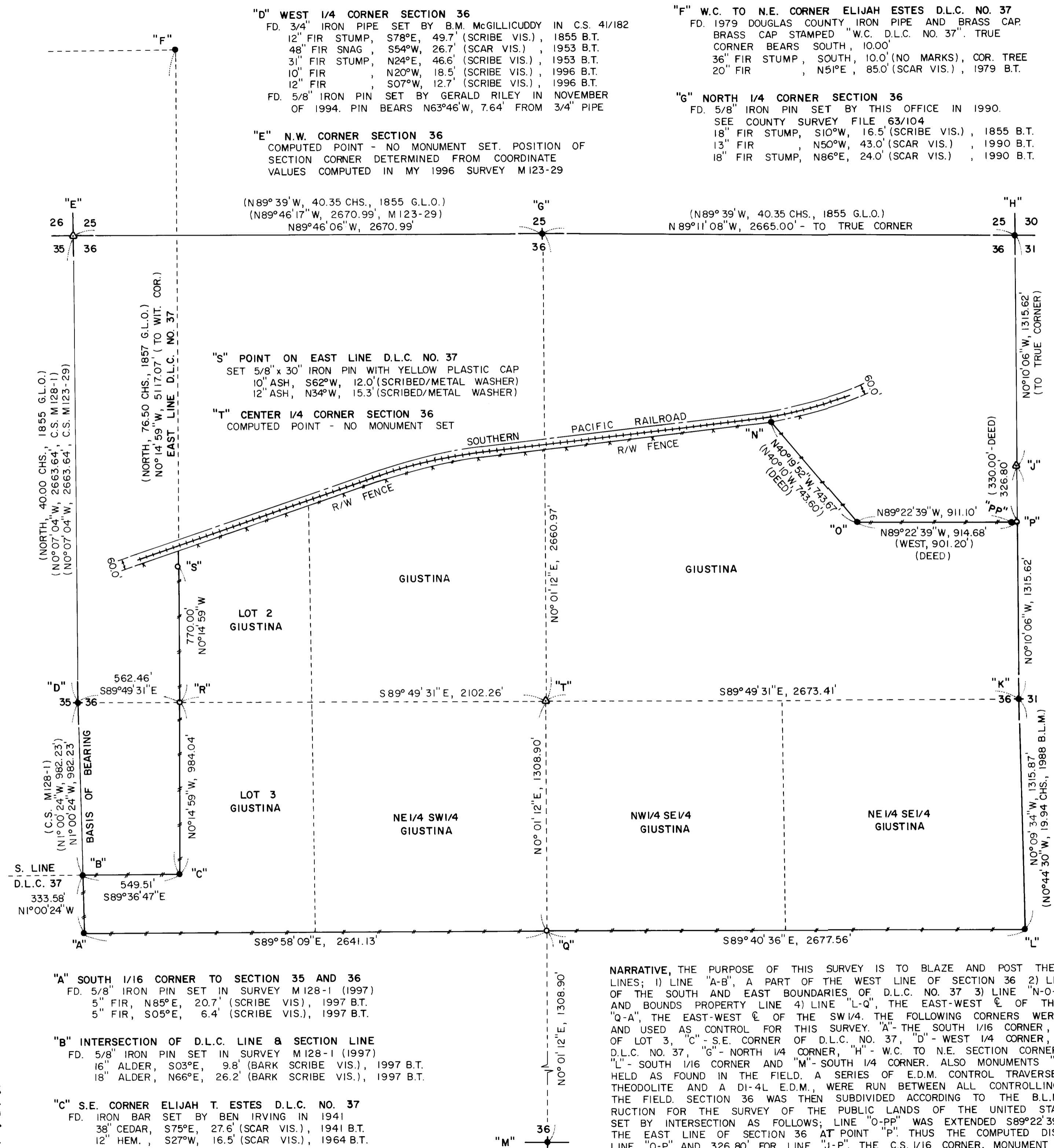
SCALE 1" = 400'
APRIL 13, 2000

LEGEND

- MONUMENTS FOUND AND USED FOR CONTROL
- △ COMPUTED POINT - NO MONUMENT SET
- MONUMENTS SET - 5/8" x 30" IRON PINS WITH YELLOW PLASTIC CAPS. CAPS STAMPED ROBERTS SURVEYING INC.
- //— LINES MARKED WITH RED PAINTED BLAZES, RED PLASTIC RIBBON AND GREEN METAL FENCE POSTS.
- () DATA OF RECORD - 1855 G.L.O. SURVEY BY GORDON AND GARDNER. 1857 D.L.C. SURVEY BY DENNIS HATHORN. SURVEY C.S. 41/182 BY B.M. MCGILLICUDDY IN 1953. SURVEY M123-29 BY LES ROBERTS IN 1996. SURVEY M128-1 BY LES ROBERTS IN 1997. 1988-1989 B.L.M. RESURVEY ALONG EAST LINE SECTION 36.
- BASIS OF BEARING - LINE "A-B-D" FROM SURVEY M128-1
- DISTANCES TO BEARING TREES ARE CENTER MEASURE
- ALL NEW BEARING TREES ARE SCRIBED AND HAVE A METAL WASHER STAMPED P.L.S. 1039 NAILED TO LOWER BLAZE. LOWER BLAZES ARE PAINTED RED.

L.D. Roberts

EXPIRES 12-31-2000



MAP FILE M134-66

MAP FILE M134-66

"A" SOUTH 1/16 CORNER TO SECTION 35 AND 36
FD. 5/8" IRON PIN SET IN SURVEY M128-1 (1997)
5" FIR, N85°E, 20.7' (SCRIBE VIS.), 1997 B.T.
5" FIR, S05°E, 6.4' (SCRIBE VIS.), 1997 B.T.

"B" INTERSECTION OF D.L.C. LINE & SECTION LINE
FD. 5/8" IRON PIN SET IN SURVEY M128-1 (1997)
16" ALDER, S03°E, 9.8' (BARK SCRIBE VIS.), 1997 B.T.
18" ALDER, N66°E, 26.2' (BARK SCRIBE VIS.), 1997 B.T.

"C" S.E. CORNER ELIJAH T. ESTES D.L.C. NO. 37
FD. IRON BAR SET BY BEN IRVING IN 1941
38" CEDAR, S75°E, 27.6' (SCAR VIS.), 1941 B.T.
12" HEM., S27°W, 16.5' (SCAR VIS.), 1964 B.T.

"D" WEST 1/4 CORNER SECTION 36
FD. 3/4" IRON PIPE SET BY B.M. MCGILLICUDDY IN C.S. 41/182
12" FIR STUMP, S78°E, 49.7' (SCRIBE VIS.), 1855 B.T.
48" FIR SNAG, S54°W, 26.7' (SCAR VIS.), 1953 B.T.
31" FIR STUMP, N24°E, 46.6' (SCRIBE VIS.), 1953 B.T.
10" FIR, N20°W, 18.5' (SCRIBE VIS.), 1996 B.T.
12" FIR, S07°W, 12.7' (SCRIBE VIS.), 1996 B.T.
FD. 5/8" IRON PIN SET BY GERALD RILEY IN NOVEMBER OF 1994. PIN BEARS N63°46'W, 7.64' FROM 3/4" PIPE

"E" N.W. CORNER SECTION 36
COMPUTED POINT - NO MONUMENT SET. POSITION OF SECTION CORNER DETERMINED FROM COORDINATE VALUES COMPUTED IN MY 1996 SURVEY M123-29
(N89°39'W, 40.35 CHS., 1855 G.L.O.)
(N89°46'17"W, 2670.99', M123-29)
N89°46'06"W, 2670.99'

"F" W.C. TO N.E. CORNER ELIJAH ESTES D.L.C. NO. 37
FD. 1979 DOUGLAS COUNTY IRON PIPE AND BRASS CAP. BRASS CAP STAMPED "W.C. D.L.C. NO. 37". TRUE CORNER BEARS SOUTH, 10.00'
36" FIR STUMP, SOUTH, 10.0' (NO MARKS), COR. TREE
20" FIR, N51°E, 85.0' (SCAR VIS.), 1979 B.T.

"G" NORTH 1/4 CORNER SECTION 36
FD. 5/8" IRON PIN SET BY THIS OFFICE IN 1990.
SEE COUNTY SURVEY FILE 63/104
18" FIR STUMP, S10°W, 16.5' (SCRIBE VIS.), 1855 B.T.
13" FIR, N50°W, 43.0' (SCAR VIS.), 1990 B.T.
18" FIR STUMP, N86°E, 24.0' (SCAR VIS.), 1990 B.T.

"S" POINT ON EAST LINE D.L.C. NO. 37
SET 5/8" x 30" IRON PIN WITH YELLOW PLASTIC CAP
10" ASH, S62°W, 12.0' (SCRIBED/METAL WASHER)
12" ASH, N34°W, 15.3' (SCRIBED/METAL WASHER)

"T" CENTER 1/4 CORNER SECTION 36
COMPUTED POINT - NO MONUMENT SET

NARRATIVE, THE PURPOSE OF THIS SURVEY IS TO BLAZE AND POST THE FOLLOWING PROPERTY LINES; 1) LINE "A-B", A PART OF THE WEST LINE OF SECTION 36 2) LINE "B-C-R-S", A PART OF THE SOUTH AND EAST BOUNDARIES OF D.L.C. NO. 37 3) LINE "N-O-P", AN INTERIOR METES AND BOUNDS PROPERTY LINE 4) LINE "L-Q", THE EAST-WEST $\frac{1}{2}$ OF THE SE 1/4 AND 5) LINE "Q-A", THE EAST-WEST $\frac{1}{2}$ OF THE SW 1/4. THE FOLLOWING CORNERS WERE FOUND IN THE FIELD AND USED AS CONTROL FOR THIS SURVEY. "A" - THE SOUTH 1/16 CORNER, "B" - THE S.W. CORNER OF LOT 3, "C" - S.E. CORNER OF D.L.C. NO. 37, "D" - WEST 1/4 CORNER, "F" - N.E. CORNER OF D.L.C. NO. 37, "G" - NORTH 1/4 CORNER, "H" - W.C. TO N.E. SECTION CORNER, "K" - EAST 1/4 CORNER, "L" - SOUTH 1/16 CORNER AND "M" - SOUTH 1/4 CORNER. ALSO MONUMENTS "N", "O" AND "PP" WERE HELD AS FOUND IN THE FIELD. A SERIES OF E.D.M. CONTROL TRAVERSES, USING A WILD T-16 THEODOLITE AND A DI-4L E.D.M., WERE RUN BETWEEN ALL CONTROLLING CORNERS FOUND IN THE FIELD. SECTION 36 WAS THEN SUBDIVIDED ACCORDING TO THE B.L.M. MANUAL OF INSTRUCTION FOR THE SURVEY OF THE PUBLIC LANDS OF THE UNITED STATES. MONUMENT "P" WAS SET BY INTERSECTION AS FOLLOWS; LINE "O-PP" WAS EXTENDED S89°22'39"E TO INTERSECT WITH THE EAST LINE OF SECTION 36 AT POINT "P". THUS THE COMPUTED DISTANCES OF 914.68' FOR LINE "O-P" AND 326.80' FOR LINE "J-P". THE C.S. 1/16 CORNER, MONUMENT "Q", WAS SET HALFWAY BETWEEN THE COMPUTED CENTER 1/4 CORNER "T" AND THE FOUND SOUTH 1/4 CORNER "M". LOT CORNER "R" WAS SET AT THE POINT OF INTERSECTION OF THE EAST-WEST $\frac{1}{2}$ OF SECTION 36 WITH THE EAST LINE OF D.L.C. NO. 37.

- "H" W.C. TO N.E. CORNER SECTION 36
FD. 1988 B.L.M. IRON PIPE AND BRASS CAP
TRUE CORNER BEARS SOUTH, 20.46'
1988 BRASS CAP R.M., N40°E, 210.0' (MK'D W.C.)
1988 BRASS CAP R.M., N50°W, 210.0' (MK'D W.C.)
- "J" NORTH 1/16 CORNER TO SECTIONS 31 & 36
COMPUTED POINT - NO MONUMENT SET
- "K" EAST 1/4 CORNER SECTION 36
FD. 1988 B.L.M. IRON PIPE AND BRASS CAP
20" FIR STUMP, S83°E, 18.5' (SCAR VIS.), 1964 B.T.
14" FIR STUMP, N46°W, 18.5' (SCAR VIS.), 1988 B.T.
15" FIR STUMP, S24°E, 12.5' (SCAR VIS.), 1988 B.T.
- "L" SOUTH 1/16 CORNER TO SECTIONS 31 & 36
FD. 1988 B.L.M. IRON PIPE AND BRASS CAP
18" FIR STUMP, N35°W, 9.9' (SCAR VIS.), 1953 B.T.
22" FIR SNAG, S74°E, 33.7' (SCAR VIS.), 1988 B.T.
- "M" SOUTH 1/4 CORNER SECTION 36
FD. BRASS CAP SET BY BRUCE SHANER IN SURVEY M42-68
56" FIR STUMP, N08°E, 68.4' (NO MARKS), 1855 B.T.
60" FIR STUMP, S52°E, 115.0' (NO MARKS), 1855 B.T.
- "N" PROPERTY CORNER ON SOUTHERLY RAILROAD R/W LINE
FD. 3/4" IRON ROD SET IN R/W FENCE LINE (NO RECORD)
IRON ROD CALLED FOR IN PROPERTY DESCRIPTION. SEE VOL. 272, PAGE 725, DOUGLAS CO. DEED RECORDS.
- "O" INTERIOR PROPERTY CORNER
FD. 3/4" IRON ROD (NO RECORD). IRON ROD CALLED FOR IN PROPERTY DESCRIPTION. SEE VOLUME 272, PAGE 725, DOUGLAS COUNTY DEED RECORDS.
SET 6" W. FIR, N24°W, 5.3' (SCRIBED/METAL WASHER)
14" FIR, S24°W, 10.0' (SCRIBED/METAL WASHER)
- "P" PROPERTY CORNER ON EAST SECTION LINE
FD. 3/4" IRON ROD 3.58' WEST OF SECTION LINE (NO RECORD). SET 5/8" x 30" IRON PIN S89°22'39"E, 3.58' FROM FOUND 3/4" IRON ROD.
SET 6" CEDAR, S79°E, 35.8' (SCRIBED/METAL WASHER)
20" FIR, N22°E, 8.9' (SCRIBED/METAL WASHER)
- "Q" C.S. 1/16 CORNER SECTION 36
SET 5/8" x 30" IRON PIN WITH YELLOW PLASTIC CAP
6" W. FIR, N85°W, 15.0' (SCRIBED/METAL WASHER)
12" FIR, S15°E, 10.6' (SCRIBED/METAL WASHER)
- "R" N.W. CORNER GOVERNMENT LOT 3
SET 5/8" x 30" IRON PIN WITH YELLOW PLASTIC CAP
6" MAPLE, N15°W, 8.0' (SCRIBED/METAL WASHER)
20" FIR, S84°E, 15.6' (SCRIBED/METAL WASHER)