

LONE ROCK TIMBER CO.

PO BOX 1127 ROSEBURG OREGON 97470 DATE: MARCH 2000
SECTIONS 1 & 2, TOWNSHIP 25 SOUTH, RANGE 6 WEST, W.M. DOUGLAS COUNTY, OREGON
LONE ROCK TIMBER TRACT: SUTTON SCALE 1" = 600'

FILED

Date: 5/8/2000 By: J.P.
This survey consists of:
Map: M134-64
Narrative:
Corner Rpt.:

DOUGLAS COUNTY
SURVEYOR J.P.

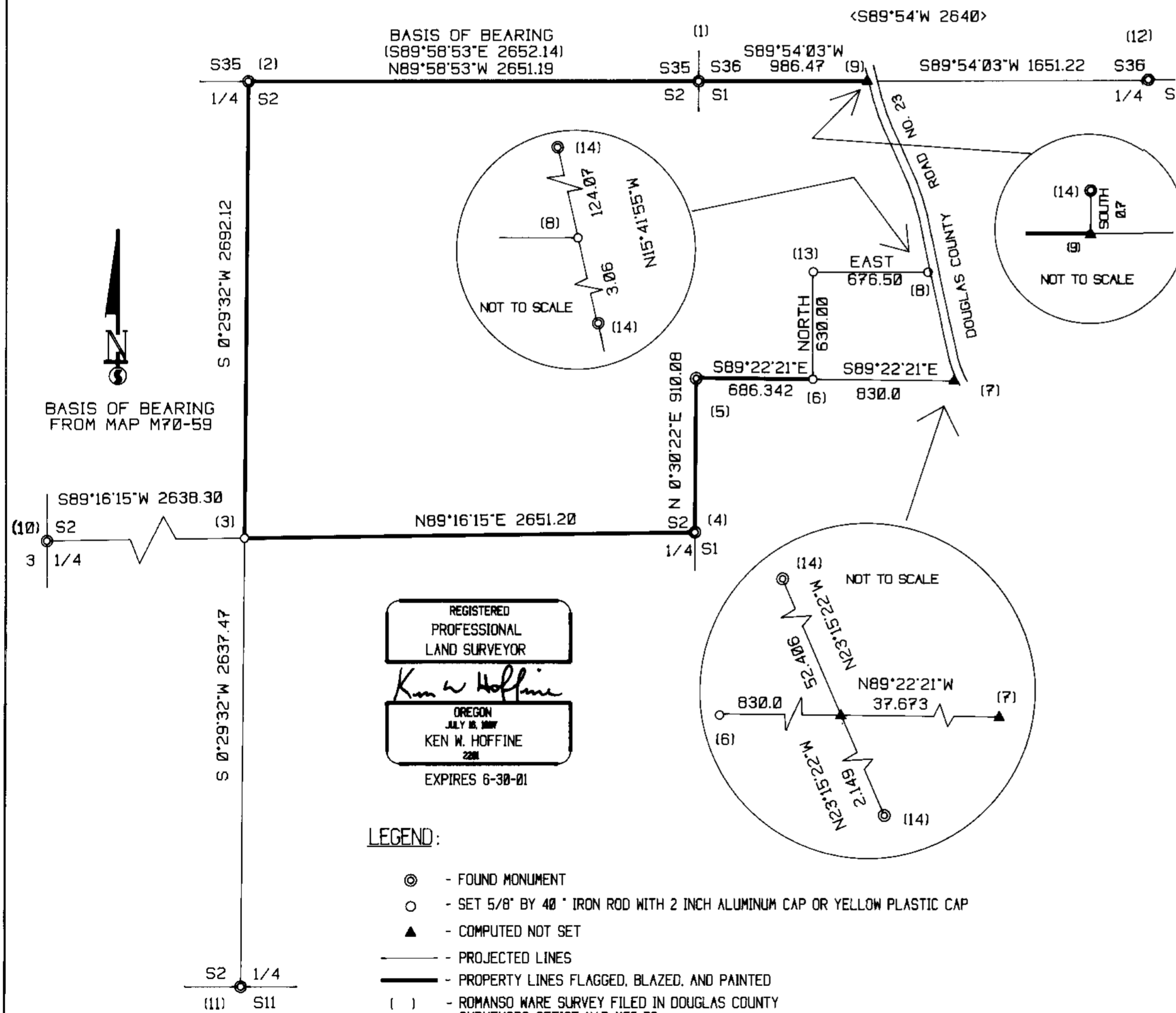
NARRATIVE

THIS SURVEY WAS CONDUCTED TO ESTABLISH PROPERTY CORNERS AND PROPERTY LINES FOR TIMBER CUTTING PURPOSES. WE INITIATED THIS SURVEY AT THE NORTHEAST CORNER OF SECTION 2. A COUNTY BCIP SET FROM ORIGINAL EVIDENCE. WE BEGAN A RANDOM CLOSED TRAVERSE NEAR AND ALONG PROPERTY LINES WESTERLY TO THE NORTH 1/4 OF SECTION 2 AN IRON ROD SET BY PROPORTION, CONTINUING SOUTHERLY TO A POINT NEAR THE CENTER 1/4 AND THEN EASTERLY TO THE EAST 1/4 OF SECTION 2. A COUNTY BCIP SET FROM PERPETUATED ORIGINAL EVIDENCE. WE THEN RAN NORTHERLY TO THE WEST SOUTHWEST CORNER OF DLC 61 A 1 1/8" IRON SHAFT SET BY DEPUTY COUNTY SURVEYOR IN 1923. CONTINUING OUR TRAVERSE EASTERLY TO THE INTERIOR CORNER OF DLC. A CORNER SET UNDER PAVEMENT OF THE COUNTY ROAD ALSO SET BY DEPUTY COUNTY SURVEYOR IN 1923. WE THEN SURVEYED NORTHERLY ALONG THE COUNTY ROAD TIEING IN IRON RODS SET BY THE COUNTY FOR R/W IN 1973 CLOSING OUR SURVEY AT THE NORTHEAST CORNER OF SECTION 2. FROM TRAVERSE POINTS ON OUR MAIN TRAVERSE WE ALSO RAN THREE SMALLER CLOSED LOOP TRAVERSES TO TIE IN 1) SOUTH 1/4 OF SECTION 2. A COUNTY BCIP SET FROM ORIGINAL EVIDENCE 2) THE WEST 1/4 OF SECTION 2. A COUNTY BCIP SET FROM PERPETUATED ORIGINAL EVIDENCE 3) THE NORTH 1/4 OF SECTION 1. A COUNTY BCIP SET FROM ORIGINAL EVIDENCE. WE COMPUTED TO SET THE CENTER 1/4 OF SECTION 2 ACCORDING TO MANUAL OF INSTRUCTIONS FOR SURVEY OF THE PUBLIC LANDS. WE SET CORNER #6 830 FEET WESTERLY OF THE WEST R/W BOUNDARY OF THE COUNTY ROAD AS PER DEED ON THE DLC LINE. WE SET PROPERTY CORNER #13 630.00 FEET NORTH OF PROPERTY CORNER #6 AS PER DEED AND PROPERTY CORNER #8 EAST OF PROPERTY CORNER #13 ON THE R/W BOUNDARY LINE AS PER DEED. WE MARKED PROPERTY LINES WITH BLAZES, PAINT, RIBBON AND TAGS AS SHOWN HEREON. THIS SURVEY WAS DONE WITH A NIKON DTM 450 WITH GARY ANGIOLET, MARK DVORSCAK AND IGNACIO ROMAN ASSISTING ME.

CORNER INFORMATION

THE FOLLOWING IS A RECORD OF ALL CORNERS SET OR FOUND DURING THE COURSE OF THIS SURVEY.

- 1) THE NORTHEAST SECTION CORNER OF SECTION 2
FOUND 1962 COUNTY BRASS CAP.
-- 19" DOUGLAS FIR BEARS N41 1/2"W, 44.3 FEET (RECORD N41 1/2"W, 43.0 FEET) WELL HEALED FACE AND TAG
-- 21" DOUGLAS FIR STUMP BEARS S51"W, 20.7 FEET (RECORD S52"W, 21.4) NO TAG, OPENED STUMP AND FOUND PARTIAL SCRIBING
-- 10" OAK BEARS S 29 1/2"E, 8.4 FEET (RECORD S29"E, 8.4 FEET) WELL HEALED FACE, NO TAG
-- 12" OAK BEARS N34"E, 11.1 FEET (RECORD N34"E, 11.1 FEET) WELL HEALED FACE AND TAG
-- 31" OAK APPROXIMATELY N74"E, NOT MEASURED TO (RECORD N73 3/4"E, 188.1 FEET) WELL HEALED FACE AND TAG
CORNER LIES ON NORTH EAST SLOPE, A FENCE CORNER BEARS N42 E, 3.6 FEET. FENCE RUNS NORTH, SOUTH AND WEST.
- 2) THE 1/4 CORNER BETWEEN SECTION 2 AND SECTION 35 OF T24S, R6W
FOUND 5/8" IRON ROD
-- 30" DOUGLAS FIR BEARS S32"E, 11.0 FEET (RECORD S27"E, 11.0 FEET) WELL HEALED FACE AND TAG
-- 12" DOUGLAS FIR BEARS N20"W, 31.2 FEET (RECORD N27"W, 31.1 FEET) WELL HEALED FACE AND TAG
CORNER LIES ON EAST FACING SLOPE APPROXIMATELY 100 FEET FROM BOTTOM OF A DRAW THAT RUNS NORTH AND SOUTH IN AN OLD FENCE LINE THAT RUNS EAST AND WEST. RECENT CLEAR-CUT SOUTHWEST OF CORNER.
- 3) THE CENTER 1/4 CORNER OF SECTION 2
SET 5/8" X 40" IRON ROD WITH 2 1/2" ALUMINUM CAP MARKED LONE ROCK TIMBER T25S, R6W C1/4 S2 2000 PLS 2291.
-- 6" DOUGLAS FIR BEARS N72"E, 24.0 FEET. WE SCRIBE C1/4 S2 B.T. AND TAG TREE
-- 7" DOUGLAS FIR BEARS N36"W, 31.9 FEET. WE SCRIBE C1/4 S2 B.T. AND TAG TREE
-- 6" DOUGLAS FIR BEARS S47"W, 7.4 FEET. WE SCRIBE C1/4 S2 B.T. AND TAG TREE
-- 4" MADRONE BEARS S64 3/4"E, 47.9 FEET. WE SCRIBE C1/4 S2 B.T. AND TAG TREE
CORNER LIES ON NORTH FACING SLOPE APPROXIMATELY 40 FEET BELOW RIDGE TOP. A FENCE CORNER IS APPROXIMATELY 20 FEET EASTERLY. FENCE RUNS EAST AND NORTH.
- 4) THE 1/4 CORNER BETWEEN SECTION 2 AND SECTION 1
FOUND 1962 COUNTY BRASS CAP.
-- 23" OAK BEARS N25 1/2"E, 28.2 FEET (RECORD N28"E, 19.8 FEET) WELL HEALED FACE AND TAG
-- 10" OAK BEARS N82 3/4"W, 18.3 FEET (RECORD N61"W, 18.0 FEET) WELL HEALED FACE AND TAG
-- 24" OAK BEARS N46"E, 56.6 (RECORD N47"E, 56.3 FEET) WELL HEALED FACE AND TAG
CORNER LIES IN FENCE CORNER ON FLAT RIDGETOP APPROXIMATELY 30 FEET NORTH OF ROCK ROAD. FENCE RUNS EAST, WEST AND NORTH.
- 5) THE WEST SOUTHWEST CORNER OF DLC 61
FOUND 1 1/4" IRON ROD IN A PILE OF STONES.
-- 20" DOUGLAS FIR BEARS N57 1/2"E, 24.2 FEET (RECORD N57 1/2"E, 24.1 FEET) WELL HEALED FACE AND TAG
-- 16" PINE BEARS S3 1/2"E, 31.1 FEET (RECORD S2 1/2"E, 31.0 FEET) WELL HEALED FACE AND TAG
-- 23" DOUGLAS FIR BEARS N10 1/2"W, 42.9 FEET. WE SCRIBE WSW DLC 61 B.T. AND TAG TREE
-- 28" DOUGLAS FIR BEARS S47"W, 72.4 FEET. WE SCRIBE WSW DLC 61 B.T. AND TAG TREE
CORNER LIES ON EAST FACING SLOPE IN A FENCE CORNER. FENCE RUNS SOUTH AND EAST.
- 6) PROPERTY CORNER
WE SET 5/8" X 40" IRON ROD WITH YELLOW PLASTIC CAP MARKED LONE ROCK TIMBER PLS 2291
-- 10" DOUGLAS FIR BEARS S21 1/2"E, 15.7 FEET. WE SCRIBE B.T. AND TAG TREE
-- 19" DOUGLAS FIR BEARS N29 1/2"W, 27.3 FEET. WE SCRIBE B.T. AND TAG TREE
CORNER LIES ON SOUTH EDGE OF A SMALL CREEK. CREEK RUNS WEST TO EAST. A FENCE CORNER SITS APPROXIMATELY 25 FEET NORTH. FENCE RUNS NORTH AND WEST.
- 7) INTERIOR CORNER FOR DLC61.
COMPUTED POINT FOR CORNER FROM FOUND BEARING TREES.
-- 30" OAK BEARS N58"W, 73.2 FEET. WELL HEALED FACE AND TAG
-- 15" OAK BEARS S47 1/2"W, 31.1 FEET. WELL HEALED FACE, NO TAG
CORNER LIES UNDER PAVEMENT IN COUNTY ROAD #23 A STRONG MAGNETIC SIGNAL IS DETECTED AT THE COMPUTED POINT.
- 8) PROPERTY CORNER
SET 5/8" X 40" IRON ROD WITH YELLOW PLASTIC CAP MARKED LONE ROCK TIMBER PLS 2291.
-- 8" OAK BEARS S35 1/2"W, 19.1 FEET. WE SCRIBE B.T. AND TAG TREE
-- 20" DOUGLAS FIR BEARS N42"W, 36.9 FEET. WE SCRIBE B.T. AND TAG TREE
CORNER LIES ON EAST FACING SLOPE AT WEST BOUNDARY OF RIGHT-OF-WAY FOR DOUGLAS COUNTY ROAD 23. A FENCE IS 0.6 FEET WEST. FENCE RUNS NORTH AND SOUTH.
- 9) PROPERTY CORNER
FOUND 5/8" IRON ROD FROM COUNTY ROAD 23 RIGHT-OF-WAY 0.7 FEET NORTH OF COMPUTED PROPERTY CORNER.
-- 33" OAK BEARS S64"E, 77.3 FEET. WE SCRIBE B.T. AND TAG TREE
CORNER IS IN FENCE CORNER AT WEST BOUNDARY OF RIGHT-OF-WAY FOR DOUGLAS COUNTY ROAD 23. FENCE RUNS SOUTH AND WEST.
- 10) THE 1/4 CORNER BETWEEN SECTIONS 2 AND 3
FOUND 1962 COUNTY BRASS CAP.
-- 26" DOUGLAS FIR BEARS S29 3/4"W, 92.7 FEET (RECORD S33"W, 93.0 FEET) WELL HEALED FACE AND TAG
-- 5" DOUGLAS FIR BEARS S61 3/4"W, 9.5 FEET (RECORD S58 1/2"W, 9.5 FEET) VISIBLE SCRIBING AND TAG
-- 7" OAK BEARS S58"E, 15.9 FEET (RECORD S58 1/2"E, 15.9 FEET) VISIBLE SCRIBING AND TAG
-- 7" MADRONE BEARS S81"E, 36.2 FEET (RECORD N78"E, 36.4 FEET) WELL HEALED FACE AND TAG
CORNER LIES ON WEST FACING SLOPE IN OLD FENCE CORNER. FENCE RUNS NORTH AND WEST.
- 11) THE 1/4 CORNER BETWEEN SECTIONS 2 AND 11
FOUND 1962 COUNTY BRASS CAP
-- 9" DOUGLAS FIR ROTTEN SNAG BEARS N63 1/4"W, 44.9 FEET (RECORD N62"W, 44.8 FEET) HEALED FACE, NO TAG
-- 20" MADRONE BEARS S62"W, 21.1 FEET (RECORD S64"W, 20.9 FEET) WELL HEALED FACE AND TAG
CORNER LIES ON GENTLE SOUTH SLOPE IN FENCE LINE. FENCE RUNS NORTH AND SOUTH.
- 12) THE 1/4 CORNER BETWEEN SECTION 1 AND SECTION 36 OF T24S, R6W
FOUND 1962 COUNTY BRASS CAP.
-- 14" OAK BEARS S21"E, 36.7 FEET (RECORD S20"E, 37.3 FEET) WELL HEALED FACE, NO TAG
-- 25" OAK BEARS S10 1/2"W, 45.7 FEET (RECORD S12"W, 44.9 FEET) CHOPPED OUT ROTTEN FACE AND TAG
-- 19" OAK BEARS N61 3/4"W, 24.7 FEET (RECORD N62"W, 24.9 FEET) WELL HEALED FACE, NO TAG
-- ROTTEN REMAINS OF OLD OAK FOUND ON GROUND IN APPROXIMATE LOCATION OF OTHER ORIGINAL B.T.
CORNER LIES ON WEST FACING SLOPE. A FENCE CORNER IS APPROXIMATELY 13 FEET NORTHEASTERLY. FENCE RUNS NORTH, SOUTH, EAST AND WEST.
- 13) PROPERTY CORNER
SET 5/8" X 40" IRON ROD WITH YELLOW PLASTIC CAP MARKED LONE ROCK TIMBER LS2291
-- 21" DOUGLAS FIR BEARS N19"W 16.4 FEET. WE SCRIBE BT AND TAG TREE.
-- 25" OAK BEARS S74 1/2"E 19.8 FEET. WE SCRIBE BT AND TAG TREE.
CORNER LIES ON GENTLE EAST SLOPE 25 FEET BELOW A SMALL POND. A FENCE IS 0.5 FEET SOUTH. FENCE RUNS EAST AND WEST.
- 14) FOUND 5/8" IRON RODS ON RIGHT-OF-WAY FOR DOUGLAS COUNTY ROAD 23 (1973 DOUGLAS COUNTY ROAD DEPARTMENT MAP SHEET 3).



REGISTERED
PROFESSIONAL
LAND SURVEYOR
Ken W. Hoffine
OREGON
JULY 16, 1989
KEN W. HOFFINE
228
EXPIRES 6-30-01

LEGEND:

- ⊙ - FOUND MONUMENT
- - SET 5/8" BY 40" IRON ROD WITH 2 INCH ALUMINUM CAP OR YELLOW PLASTIC CAP
- ▲ - COMPUTED NOT SET
- - PROJECTED LINES
- - PROPERTY LINES FLAGGED, BLAZED, AND PAINTED
- () - ROMANSO WARE SURVEY FILED IN DOUGLAS COUNTY SURVEYORS OFFICE MAP M70-59
- < > - GLO FIELD NOTES PAGES 3130 & 3131 FILED IN DOUGLAS COUNTY SURVEYORS OFFICE

MAP FILE M134-64

MAP FILE M134-64