

FILED

Date: 3-29-2000 By: JP

This survey consists of:

Map: M134-42

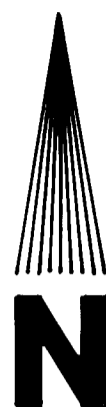
Narrative: _____

Corner Rpt: _____

DOUGLAS COUNTY SURVEYOR

NORTH 1/4 CORNER SECTION 20

FD. 1977 B.L.M. IRON PIPE AND BRASS CAP
12" ALDER, N27°W, 33.0' (SCAR VIS.), 1971 B.T.
14" ALDER, S84°W, 7.9' (SCAR VIS.), 1971 B.T.



MARCH 15, 2000
SCALE 1" = 400'

"T" SOUTH 1/16 CORNER TO SECTIONS 20 AND 21
SET 5/8" x 30" IRON PIN WITH YELLOW PLASTIC CAP
10" MAPLE, N57°W, 9.8' (SCRIBED/METAL WASHER/PAINTED RED)
14" FIR, N58°E, 42.5' (SCRIBED/METAL WASHER/PAINTED RED)

"U" EAST 1/4 CORNER SECTION 20
FD. 1964 DOUGLAS COUNTY IRON PIPE AND BRASS CAP
28" FIR, N15°W, 7.0' (SCAR VIS.), 1964 B.T.
32" FIR, S39°E, 36.0' (SCAR VIS.), 1964 B.T.

"V" C.E. 1/16 CORNER SECTION 20
COMPUTED POINT - NO MONUMENT SET

"W" CENTER 1/4 CORNER SECTION 20
COMPUTED POINT - NO MONUMENT SET

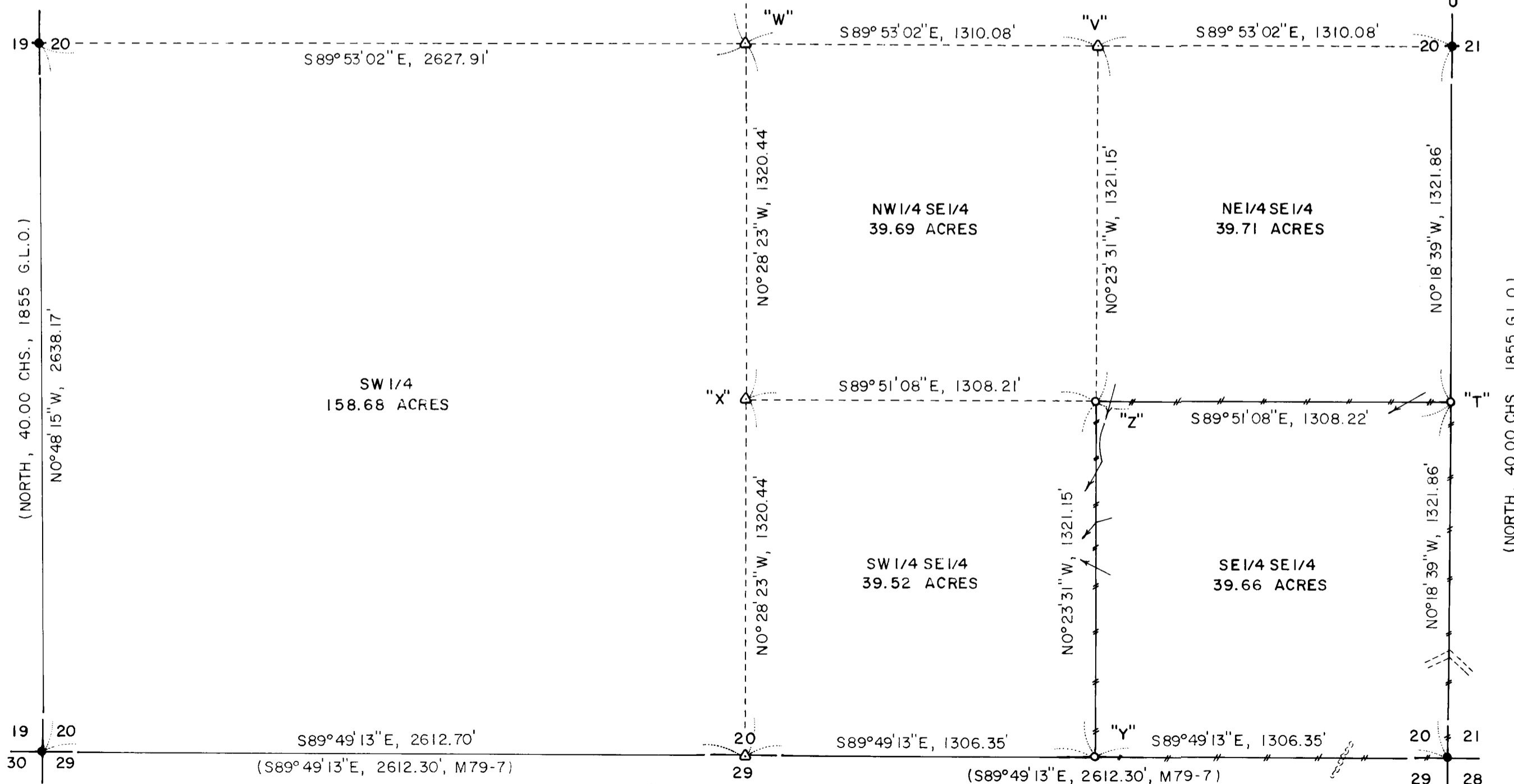
"X" C.S. 1/16 CORNER SECTION 20
COMPUTED POINT - NO MONUMENT SET

"Y" EAST 1/16 CORNER TO SECTIONS 20 AND 29
SET 5/8" x 30" IRON PIN WITH YELLOW PLASTIC CAP
8" FIR, S64°E, 2.9' (SCRIBED/METAL WASHER/PAINTED RED)
10" W. FIR, N12°W, 27.8' (SCRIBED/METAL WASHER/PAINTED RED)

"Z" S.E. 1/16 CORNER SECTION 20
SET 5/8" x 30" IRON PIN WITH YELLOW PLASTIC CAP
5" ALDER, N04°E, 17.7' (BARK SCRIBED/METAL WASHER/PAINTED RED)
14" FIR, S27°W, 16.9' (SCRIBED/METAL WASHER/PAINTED RED)

WEST 1/4 CORNER SECTION 20

FD. 5/8" IRON PIN SET BY BRUCE SHANER IN RM 2-17
36" FIR, N38°W, 35.8' (SCAR VIS.), 1962 B.T.
52" DOUBLE CEDAR, N88°E, 35.2' (SCAR VIS.), 1962 B.T.
SET 5" ALDER, N08°W, 14.2' (BARK SCRIBED/METAL WASHER)
5" ALDER, S68°E, 7.7' (BARK SCRIBED/METAL WASHER)



LEGEND,

- MONUMENTS FOUND AND USED FOR CONTROL
- △ COMPUTED POINT - NO MONUMENTS SET THIS SURVEY
- MONUMENTS SET - 5/8" x 30" IRON PINS WITH YELLOW PLASTIC CAPS. CAPS STAMPED ROBERTS SURVEYING INC.
- () DATA OF RECORD - 1855 G.L.O. SURVEY BY GORDON AND GARDNER. SURVEY M79-7 BY RONALD QUIMBY IN 1979.
- — — — — LINES MARKED WITH RED PAINTED BLAZES, RED PLASTIC RIBBON AND GREEN METAL FENCE POSTS.
- BASIS OF BEARING - SOUTH LINE OF SECTION 20 FROM SURVEY M79-7 BY RONALD QUIMBY.
- DISTANCES TO BEARING TREES ARE CENTER MEASURE
- ALL NEW BEARING TREES ARE SCRIBED AND HAVE A METAL WASHER STAMPED P.L.S. 1039 NAILED TO LOWER BLAZES. BLAZES ARE PAINTED RED.
- CREEK OR DRAW ———> RIDGE ~~~~~
- GRAVEL ROAD =====

NARRATIVE, THE PURPOSE OF THIS SURVEY IS TO BLAZE AND PAINT THE SOUTH, WEST, NORTH AND EAST BOUNDARIES OF THE SE 1/4 SE 1/4 OF SECTION 20, T21S, R4W, W.M. ALSO MONUMENTS "T", "Y", AND "Z" WERE SET IN THIS SURVEY. THE S.E. SECTION CORNER, THE S.W. SECTION CORNER, THE WEST 1/4 CORNER, THE NORTH 1/4 CORNER AND THE EAST 1/4 CORNER WERE FOUND IN THE FIELD AND USED AS CONTROL FOR THIS SURVEY. A SERIES OF CLOSED RANDOM E.D.M. CONTROL TRAVERSES, USING A WILD T-16 THEODOLITE AND A DI-4L E.D.M., WERE RUN BETWEEN THE CONTROLLING CORNERS FOUND IN THE FIELD. NO ORIGINAL G.L.O. EVIDENCE WAS FOUND AT THE LOCATION OF THE SOUTH 1/4 CORNER OF SECTION 20. THE COMPUTED POINT FOR SAID SOUTH 1/4 CORNER WAS ESTABLISHED BY SINGLE PROPORTIONATE MEASURE BETWEEN THE FOUND S.W. SECTION CORNER AND THE FOUND S.E. SECTION CORNER. THE CENTER 1/4 CORNER, COMPUTED POINT "W", WAS ESTABLISHED AT THE POINT OF INTERSECTION OF THE NORTH-SOUTH AND EAST-WEST CENTERLINES OF SAID SECTION 20. A CLOSED RANDOM PROPERTY LINE TRAVERSE, USING A WILD T-16 THEODOLITE AND A DI-4L E.D.M., WAS RUN AROUND THE SE 1/4 SE 1/4 OF SECTION 20. HORIZONTAL OFFSETS WERE COMPUTED, FROM THIS RANDOM PROPERTY LINE TRAVERSE, TO THE TRUE PROPERTY LINES. PROPERTY LINES WERE MARKED, IN THE FIELD, WITH RED PAINTED BLAZES, RED PLASTIC RIBBON AND GREEN METAL FENCE POSTS. THE SOUTH 1/16 CORNER TO SECTIONS 20 AND 21, MONUMENT "T", WAS SET HALF WAY BETWEEN THE FOUND S.E. SECTION CORNER AND THE FOUND EAST 1/4 CORNER. THE EAST 1/16 CORNER TO SECTIONS 20 AND 29, MONUMENT "Y", WAS SET HALF WAY BETWEEN THE FOUND S.E. SECTION CORNER AND THE COMPUTED SOUTH 1/4 CORNER. THE S.E. 1/16 CORNER, MONUMENT "Z", WAS SET AT THE POINT OF INTERSECTION OF THE NORTH-SOUTH AND EAST-WEST CENTERLINES OF SAID SE 1/4.

S.W. CORNER SECTION 20

FD. 3/4" IRON WITNESS REBAR SET BY ROBERT DEAN IN 4-12-84. SEE SURVEY M96-40 AND C.S. 58/204. TRUE SECTION CORNER BEARS SOUTH, 42.00'. DID NOT FIND ROBERT DEAN'S R.R. SPIKE MARKING S.W. SECTION CORNER.

SOUTH 1/4 CORNER SECTION 20

NO ORIGINAL EVIDENCE FOUND. COMPUTED POINT ESTABLISHED AT SINGLE PROPORTIONATE MEASURE BETWEEN THE FOUND S.W. AND S.E. SECTION CORNERS

S.E. CORNER SECTION 20

FD. 3/4" IRON PIPE SET BY CHARLES BAYLES IN 1953. SEE C.S. FILE 41/183.
16" FIR SNAG, S58°E, 27.8' (SCAR VIS.), 1964 B.T.
20" FIR, S48°W, 26.6' (SCAR VIS.), 1964 B.T.
22" FIR, N63°E, 9.0' (SCAR VIS.), 1964 B.T.
32" FIR, N50°W, 23.7' (SCAR VIS.), 1964 B.T.

MAP FILE M134-42

MAP FILE M134-42