

C.E. 1/16 CORNER SECTION 4
 FD. HAINES 1958 "T" IRON SET IN SURVEY M8-31
 10' DOWNED FIR, S52°E, 15.7' (SCAR VIS.), 1958 B.T.
 SET 18" FIR, N12°E, 25.2' (SCRIBED/METAL WASHER/PAINTED RED)
 24" FIR, N60°W, 12.0' (SCRIBED/METAL WASHER/PAINTED RED)

EAST 1/4 CORNER SECTION 4
 FD. HAINES 1958 "T" IRON SET IN SURVEY M8-31
 1' x 2' ROCK, S06°W, 4.55' ("X" VISIBLE), 1958 R.M.
 3' x 4' ROCK, N21°E, 15.20' ("X" VISIBLE), 1958 R.M.
 SET 6" FIR, N07°E, 9.1' (SCRIBED/METAL WASHER/PAINTED RED)
 16" FIR, S37°W, 4.8' (SCRIBED/METAL WASHER/PAINTED RED)

FILED

Date: 3-22-2000 By: JC

This survey consists of:

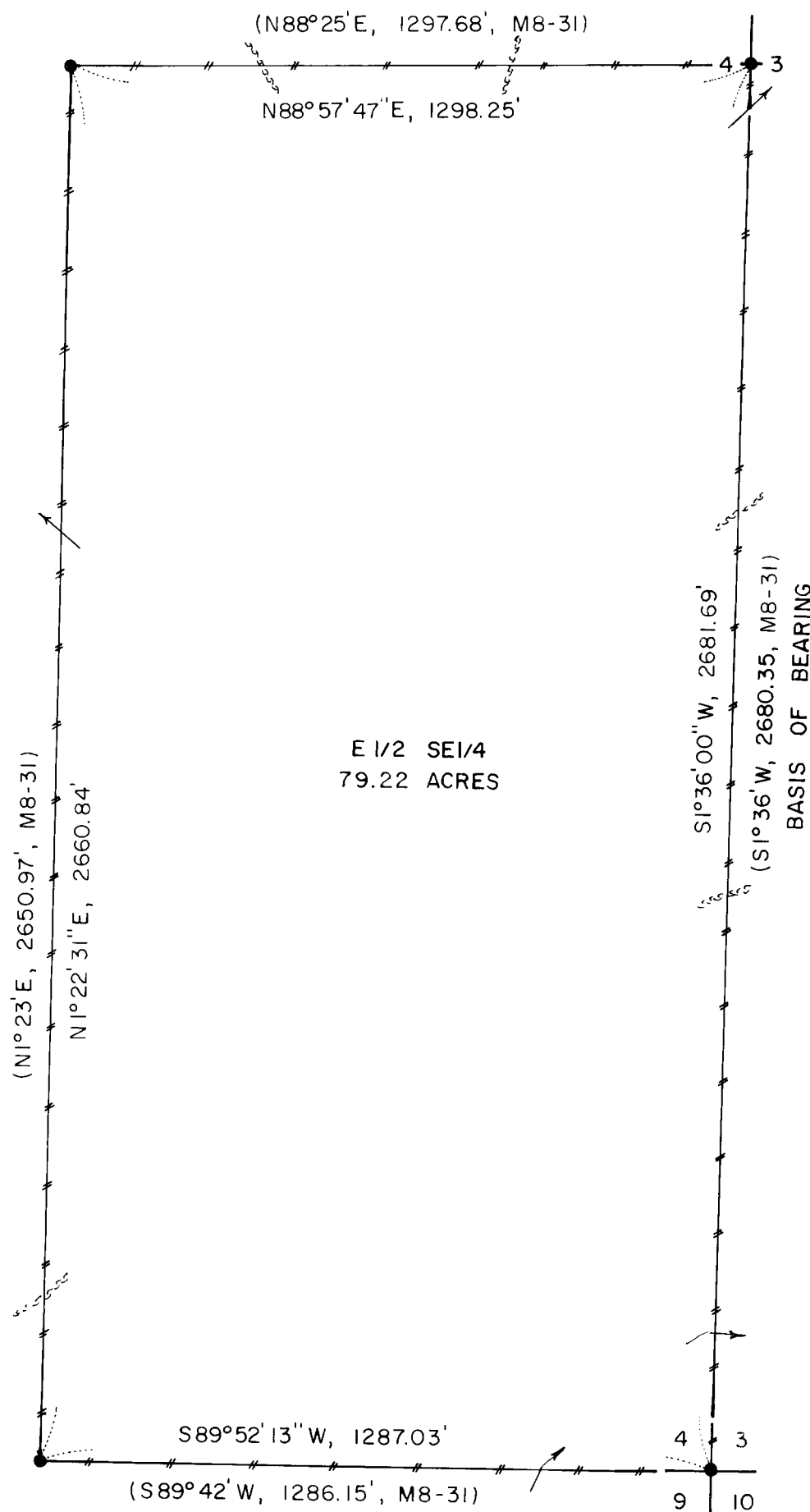
Map: M134-37

Narrative: _____

Corner Rpt: _____

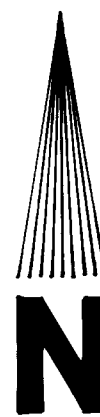
DOUGLAS COUNTY
 SURVEYOR

MAP FILE M134-37



E 1/2 SE 1/4
 79.22 ACRES

BASIS OF BEARING



MARCH 10, 2000
 SCALE 1" = 300'

BOUNDARY SURVEY
 FOR
 SENECA JONES TIMBER COMPANY
 IN
 E 1/2 SE 1/4 SECTION 4, T21S, R7W, W.M.
 DOUGLAS COUNTY, OREGON
 BY
 ROBERTS SURVEYING INC.
 P.O. BOX 7155
 EUGENE, OREGON 97401
 PHONE 345-1112

LEGEND,

- MONUMENTS FOUND AND USED FOR CONTROL
- MONUMENTS SET - NO MONUMENTS SET IN THIS SURVEY
- () DATA OF RECORD - COUNTY SURVEY M8-31 BY WILFORD HAINES IN 1958.
- //— LINES MARKED WITH RED PAINTED BLAZES, RED PLASTIC RIBBON AND RED METAL FENCE POSTS.
- //— BASIS OF BEARING - SOUTH 1/2 OF EAST LINE SECTION 4 FROM COUNTY SURVEY M8-31
- DISTANCES TO BEARING TREES ARE CENTER MEASURE
- ALL NEW BEARING TREES ARE SCRIBED AND HAVE A METAL WASHER STAMPED ROBERTS SURVEYING INC. NAILED TO LOWER BLAZE. SCRIBED BLAZES ARE PAINTED RED.
- ALL NEW BEARING TREES HAVE A 6" METAL SPIKE DRIVEN INTO THE BASE OF THE TREE TO SERVE AS A CHAINING POINT FOR MEASURED DISTANCES.
- RIDGE ~~~~~ CREEK OR DRAW ———>

L. D. Roberts

EXPIRES 12-31-2000

NARRATIVE, THE PURPOSE OF THIS SURVEY IS TO BLAZE AND PAINT THE WEST, NORTH, EAST AND SOUTH LINES OF THE EAST 1/2 OF THE SE 1/4 OF SECTION 4. THE C.E. 1/16 CORNER, THE EAST 1/4 CORNER, THE S.E. SECTION CORNER AND THE EAST 1/16 CORNER TO SECTIONS 4 AND 9 WERE FOUND IN THE FIELD AND USED AS CONTROL FOR THIS SURVEY. A CLOSED RANDOM PROPERTY LINE TRAVERSE, USING A WILD T-16 THEODOLITE AND A DI-4L E.D.M., WAS RUN ALONG ALL PROPERTY LINES TO BE BLAZED AND PAINTED. HORIZONTAL OFFSETS WERE COMPUTED, FROM THIS RANDOM PROPERTY LINE TRAVERSE, TO THE TRUE PROPERTY LINES. PROPERTY LINES WERE MARKED, IN THE FIELD, WITH RED PAINTED BLAZES, RED PLASTIC RIBBON AND RED METAL FENCE POSTS.

EAST 1/16 CORNER TO SECTIONS 4 AND 9
 FD. HAINES 1958 "T" IRON SET IN SURVEY M8-31
 60" FIR, S66°E, 8.7' (BRASS WASHER IN BARK), 1958 B.T.
 SET 14" HEMLOCK, N53°W, 16.2' (SCRIBED/METAL WASHER/PAINTED RED)

S.E. CORNER SECTION 4
 FD. HAINES 1958 "T" IRON SET IN SURVEY M8-31
 20" FIR STUMP, S71°W, 26.4' (SCRIBE VIS.), ORIGINAL B.T.
 20" FIR STUMP, S24°E, 47.4' (SCRIBE VIS.), 1965 B.T.
 SET 6" HEMLOCK, N60°W, 9.4' (SCRIBED/METAL WASHER/PAINTED RED)
 6" FIR, N22°E, 7.8' (SCRIBED/METAL WASHER/PAINTED RED)
 6" FIR, S59°E, 13.5' (SCRIBED/METAL WASHER/PAINTED RED)
 8" FIR, S46°W, 3.6' (SCRIBED/METAL WASHER/PAINTED RED)

MAP FILE M134-37