

FILED

Date: 2-15-2000 By: JC

This survey consists of:

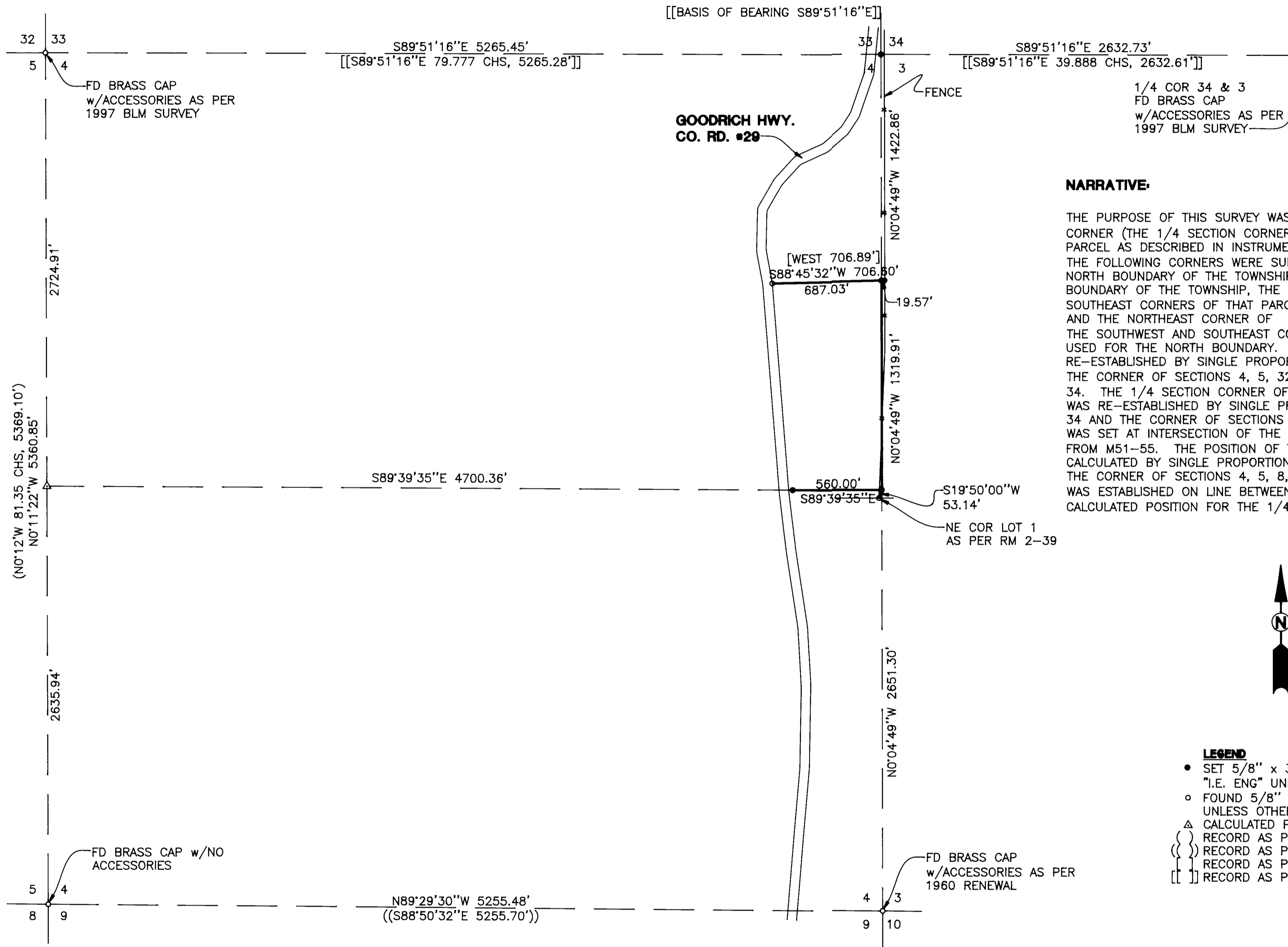
Map: M134-23

Narrative: _____

Corner Rpt: _____

DOUGLAS COUNTY SURVEYOR

MAP FILE M134-23



NARRATIVE:

THE PURPOSE OF THIS SURVEY WAS TO MONUMENT THE NORTHEAST CORNER, THE SOUTHEAST CORNER (THE 1/4 SECTION CORNER OF SECTIONS 3 AND 4), AND THE SOUTH BOUNDARY OF THAT PARCEL AS DESCRIBED IN INSTRUMENT NUMBER 99-29891 AND MARK THE LINES OF SAID PARCEL. THE FOLLOWING CORNERS WERE SURVEYED TO: THE 1/4 CORNER OF SECTIONS 3 AND 34, ON THE NORTH BOUNDARY OF THE TOWNSHIP, THE CORNER OF SECTIONS 4, 5, 32 AND 33, ON THE NORTH BOUNDARY OF THE TOWNSHIP, THE CORNER OF SECTIONS 4, 5, 8, AND 9, THE SOUTHWEST AND SOUTHEAST CORNERS OF THAT PARCEL DESCRIBED IN INSTRUMENT NUMBER 79-13578 (M51-55), AND THE NORTHEAST CORNER OF LOT 1 AS SHOWN ON RM 2-39. THE MONUMENTS FOUND AT THE SOUTHWEST AND SOUTHEAST CORNERS OF INSTRUMENT NUMBER 79-13578 (M51-55) WERE USED FOR THE NORTH BOUNDARY. THE CORNER OF SECTIONS 3, 4, 33, AND 34 WAS RE-ESTABLISHED BY SINGLE PROPORTION, ON THE NORTH BOUNDARY OF THE TOWNSHIP BETWEEN THE CORNER OF SECTIONS 4, 5, 32, AND 33 AND THE 1/4 SECTION CORNER OF SECTIONS 3 AND 34. THE 1/4 SECTION CORNER OF SECTIONS 3 AND 4 (THE SOUTHEAST CORNER OF THE PARCEL) WAS RE-ESTABLISHED BY SINGLE PROPORTION, BETWEEN THE CORNER OF SECTIONS 3, 4, 33, AND 34 AND THE CORNER OF SECTIONS 3, 4, 9, AND 10. THE NORTHEAST CORNER OF THE PARCEL WAS SET AT INTERSECTION OF THE LINE BETWEEN SECTIONS 3 AND 4 AND THE FOUND MONUMENTS FROM M51-55. THE POSITION OF THE 1/4 SECTION CORNER OF SECTIONS 4 AND 5 WAS CALCULATED BY SINGLE PROPORTION, BETWEEN THE CORNER OF SECTIONS 4, 5, 32, AND 33 AND THE CORNER OF SECTIONS 4, 5, 8, AND 9. A POINT ON THE SOUTH BOUNDARY OF THE PARCEL WAS ESTABLISHED ON LINE BETWEEN THE 1/4 SECTION CORNER OF SECTION 3 AND 4 AND THE CALCULATED POSITION FOR THE 1/4 SECTION CORNER OF SECTIONS 4 AND 5.



LEGEND

- SET 5/8" x 30" IR w/CAP MARKED "I.E. ENG" UNLESS OTHERWISE NOTED
- FOUND 5/8" IRON ROD UNLESS OTHERWISE NOTED
- △ CALCULATED POSITION
- { } RECORD AS PER GLO PLAT 1853
- { } RECORD AS PER M39-47
- { } RECORD AS PER M51-55
- [] RECORD AS PER BLM 1997 SURVEY

FIELD CREW: RYAN PALMER AND WAYNE ROGERS
EQUIPMENT: NIKON TOTAL STATION AND SDR 33 DATA COLLECTOR
OFFICE: WAYNE ROGERS
DRAFTING: MICHAEL JONES

REGISTERED PROFESSIONAL LAND SURVEYOR

Wayne L. Rogers
OREGON
 FEBRUARY 14, 1985
WAYNE L. ROGERS
 2137

EXPIRES: 12/31/2000

BOUNDARY SURVEY

LYING IN SEC.4, T24S, R5W, W. M., DOUGLAS COUNTY, OREGON

SURVEYED FOR:
 DUANE DUNCAN
 P.O. BOX 541
 YONCALLA, OREGON 97499

SURVEYED BY:
i.e.
ENGINEERING
 741 S.E. Jackson Street
 Roseburg, Oregon 97470
 PHONE (541) 673-0166
 FAX (541) 440-9392

DWG. BY: MLJ

SCALE: 1" = 500' DATE: FEB. 2000 JOB NO: 1702-01 PAGE: 1 OF 1

MAP FILE M134-23