

# MAP OF SURVEY

LOCATED in Section 16, T. 26 S., R. 2 W., W.M.  
in Douglas County, Oregon.

January 14, 2000

FILED

Date: 2/9/2000 By: JP  
This survey consists of:  
Map: M134-15  
Narrative:  
Corner Rpt:

DOUGLAS COUNTY  
SURVEYOR

MAP FILE M134-15

SET PROP. COR. ON SEC. LINE  
100' PERP. SE'LY FROM CREEK &  
CAP IS MKD. "PROP. COR.-LS 2339-2000".  
A 7" DIAM. FIR BRS. S.38°W., 11.06'  
A 6" DIAM. CEDAR BRS. N.32°W., 3.60'  
BOTH SCRIBED "PC-BT".

WEST 1/16 CORNER  
19" DIAM. FIR BRS. N.17°E., 12.54'  
13" HEMLOCK BRS. S.65°W., 2.64'

1/4 CORNER  
17" DIAM. FIR BRS. N.48 1/2°E., 53.46'  
6" DIAM. OAK BRS. S.11 1/2°E., 36.30'  
BOTH W/HEALED BLAZES & 1979 B.L.M. TAGS

EAST 1/16 CORNER  
15" DIAM. CEDAR BRS. N.82°W., 25.74'  
17" DIAM. FIR BRS. S.47°W., 15.18'

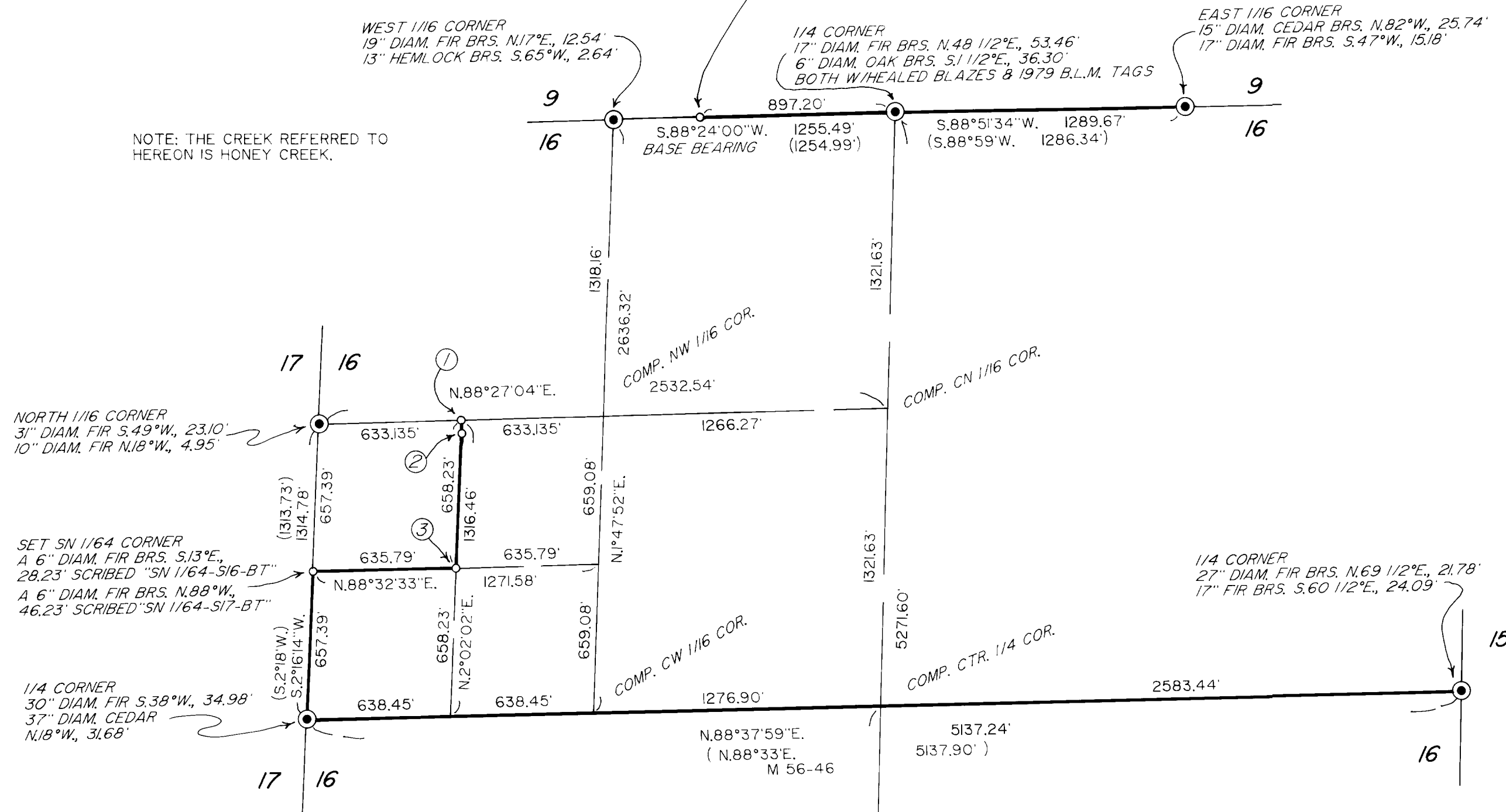
NOTE: THE CREEK REFERRED TO  
HEREON IS HONEY CREEK.

SURVEYED FOR: SENECA JONES TIMBER CO.  
556 NE RIFLE RANGE ROAD  
ROSEBURG, OREGON

SURVEYED BY: DAVID EDWARDS LAND SURVEYING  
P.O. BOX 361  
OAKLAND, OREGON 97462  
PHONE: (541) 459-0512

David A. Edwards

EXPIRES 12/31/01



## LEGEND

● INDICATES B.L.M. BRASS CAP FOUND UNLESS NOTED OTHERWISE.

○ INDICATES 5/8" X 3/8" STEEL PIN W/2" DIAM. ALUM. CAP MKD.  
"LS 2339" AND AS NOTED SET.

( ) DENOTES RECORD B.L.M. DATA EXCEPT WHERE NOTED.

— DENOTES LINE BLAZED AND POSTED THIS SURVEY.

COMP. = COMPUTED

PERP. = PERPENDICULAR

SCALE: 1" = 500'

BASIS OF BEARINGS: 1959 B.L.M. RESURVEY AS SHOWN.

## NARRATIVE

THE PURPOSE OF THIS SURVEY IS TO MARK A PORTION OF THE BOUNDARIES OF SENECA LAND IN SECTION 16 BY BLAZING TREES ON BOTH SIDES OF LINE, PLACING 5.5" STEEL POSTS ON LINE AT INTERVALS OF 200' OR LESS AND BY HANGING RED FLAGGING ALONG THESE LINES. THE SENECA LAND IS DESCRIBED AS THE NORTH 1/2 OF SECTION 16, WITH EXCEPTIONS, IN BOOK 1200, PAGE 839, DOUGLAS COUNTY DEED RECORDS.

THE 1959 B.L.M. RESURVEY SET THE 1/4 COR. AND NORTH 1/16 COR. ON THE WEST LINE OF SECTION 16 AND CALLED THEM FOR SECTION 17 ONLY. THAT SAME SURVEY SET THE 1/4 COR. ON THE EAST LINE OF SECTION 16 AND CALLED IT FOR SECTION 15 ONLY. ANALYSIS OF THE HISTORY OF SECTION 16, AS WELL AS AN INQUIRY TO THE STATE OFFICE OF THE B.L.M., INDICATES THAT THESE CORNERS SHOULD BE COMMON WITH SECTION 16. THEREFORE I UTILIZE SAID CORNERS IN COMPUTING THE SUBDIVISION OF SECTION 16, AS SHOWN HEREON.

BEARING TREES MARKED ON THIS SURVEY ARE MEASURED TO A NAIL SET SIDE CENTER BELOW STUMP HEIGHT.

LINE TREES ARE MARKED WITH TRIPLE HACKS ON EACH SIDE OF THE TREE WITH NAILS SET IN THE TREE ON LINE BELOW STUMP HEIGHT.

FIELD CREW: DAVID EDWARDS AND BRANT MILLER.

EQUIPMENT: NIKON DTM 430 TOTAL STATION.

COMPS. AND DRAFTING: DAVID EDWARDS.

① SET CWNW 1/64 CORNER.  
CAP IS MKD. "CWNW 1/64-S16-LS 2339-2000"  
A 5" DIAM. CEDAR BRS. N.11°E., 13.22'  
A 12" DIAM. FIR BRS. N.78°E., 38.40'  
BOTH SCRIBED "1/64 S16 BT"

② SET PROP. COR. ON 1/64 LINE 100' PERP.  
SE'LY FROM CREEK &  
AN 8" DIAM. FIR BRS. S.5°W., 3.90'  
A 12" DIAM. FIR BRS. S.81°W., 23.60'  
BOTH SCRIBED "PC-BT"  
CAP IS MKD. "PROP. COR.-LS 2339-2000"  
CORNER IS S.2°02'02"W., 59.88'  
FROM CWNW 1/64 CORNER.

③ SET SWNW 1/64 CORNER.  
CAP IS MKD. "SWNW 1/64-S16-LS2339-2000"  
A 7" DIAM. FIR BRS. S.4°E., 4.55'  
A 19" CEDAR BRS. N.72°W., 16.54'  
BOTH SCRIBED "1/64 S16 BT"

SOUTH 1/4 CORNER SECTION 16  
FD. 1918 G.L.O. PIPE AND CAP.  
1918 B.T.'S DOWN. NEW B.T.'S:  
A 7" DIAM. FIR BRS. N.59°E., 8.60'  
AN 8" DIAM. FIR BRS. N.3°W., 6.70'  
BOTH TREES SCRIBED "1/4 S16 BT"

MAP FILE M134-15