

NARRATIVE

THIS IS A REVISED PLAT OF MY PREVIOUS SURVEYS (M 128-59 & 62) IN SAID SECTION 2 DUE TO THE SOUTH QUARTER CORNER REMONUMENTATION.

THE PURPOSE OF THIS SURVEY WAS TO MARK SOME OF THE PROPERTY LINES FOR U.S.R. COMPANY AND AL WALKER IN SECTION 2, T26S, R3W, W. M., DOUGLAS COUNTY, OREGON.

ALL CORNERS WERE SET IN ACCORDANCE WITH THE BLM MANUAL OF SURVEYING INSTRUCTIONS 1973. THE NOTES FOR THE ORIGINAL GLO SURVEY (SAMUAL FLINT 1882) LOTTED THIS SECTION TO THE SOUTH BUT THE PLAT SHOWED THE LOTTING TO THE NORTH (NORMAL) AND THAT IS HOW I SUBDIVIDED THIS SECTION. ALSO THE SOUTH 1/4 OF SECTION 2 WAS PROPORTIONED BY BAUGHMAN, RM 2-69, 1974, AND WAS DETERMINED TO BE INCORRECT BY THE BLM AND WAS RESET TO THE ORIGINAL GLO LOCATION.

A NIKON A20LG TOTAL STATION WAS USED TO MEASURE ANGLES AND DISTANCES. BEARING TREES REFERENCED ON THIS SURVEY WERE MEASURED WITH A HAND COMPASS AND 50' DIAMETER TAPE.

BEARINGS ARE BASED ON THE NORTH-SOUTH LINE BETWEEN SECTIONS 3 AND 2 OF 1995 BLM RESURVEY (UNOFFICIAL)

SURVEY FOR U. S. R. COMPANY & AL WALKER N 1/2 OF SECTION 2, T26S, R3W, W.M. DOUGLAS COUNTY, OREGON OCTOBER 20, 1999

LEGEND

- O = SET 5/8" x 30" REBAR /W YPC "LS 2603"
● = CORNERS FOUND AS NOTED
⊕ = CORNER POSITION ONLY, NO MONUMENT FOUND
—|— = PROPERTY BOUNDARY BLAZES RED /W RED RIBBON
D C S O = DOUGLAS COUNTY SURVEY OFFICE
B C = BRASS CAP

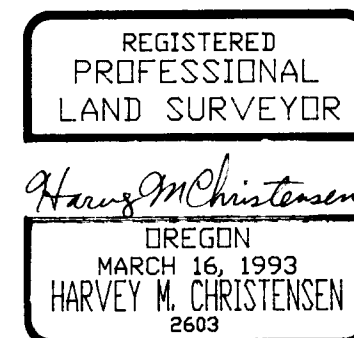
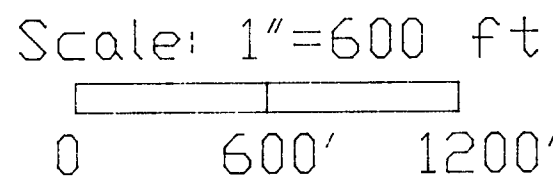
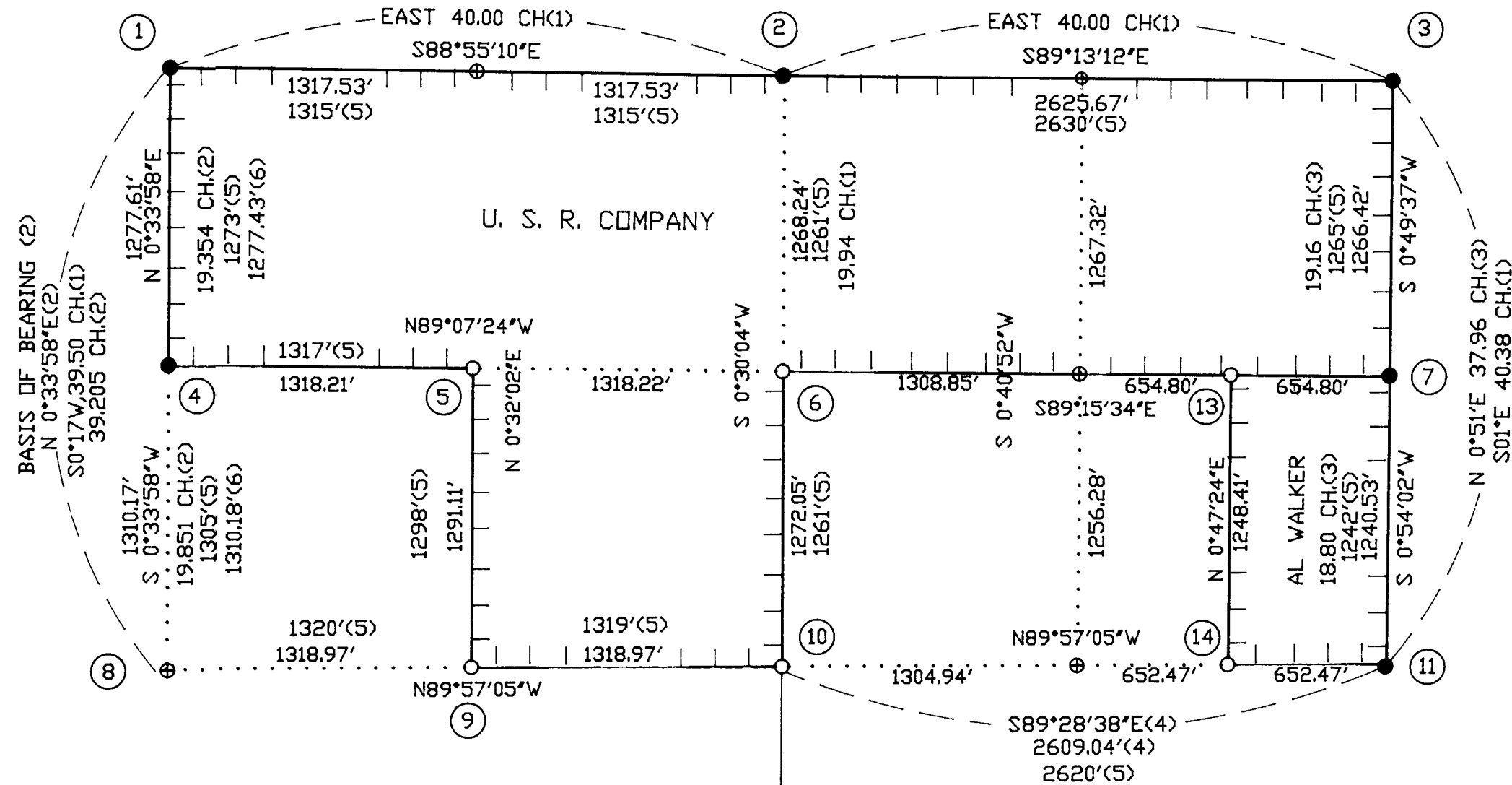
REFERENCES

- (1) 1882 G L O (SAMUAL FLINT)
(2) 1995 BLM RESURVEY
(3) 1963 BLM RESURVEY
(4) M56-34 (INVALIDATED BY CS 59/21)
(5) CS 51/87 CALDER (INVALIDATED BY CS 59/21)
(6) CS 51/306 BARTA

CORNER NOTES

- (1) SECTION CORNER 34-35/3-2 FOUND: 1943 G L O 2 1/2" B C, 0.9 FT ABOVE GROUND
(2) 1/4 CORNER SECTION 35/2 FOUND: 1997 D C S O 2 3/8" B C, 0.7 FT. ABOVE GROUND
(3) SECTION CORNER 35-36/2-1 FOUND: 1943 G L O 2 1/2" B C, 0.6 FT. ABOVE GROUND
(4) N 1/16 CORNER SECTION 3-2 FOUND: 1995 B L M 3.0" B C, 0.1 FT. ABOVE GROUND
(5) NW 1/16 CORNER SECTION 2 SET: 5/8" X 30" REBAR /W YPC "LS 2603", 0.3 FT. ABOVE GROUND
(6) CN 1/16 CORNER SECTION 2 SET: 5/8" X 30" REBAR /W YPC "LS 2603", 0.3 FT. ABOVE GROUND

- (7) N 1/16 CORNER 2/1 FOUND: 1963 B L M 3" B C, 0.4 FT ABOVE GROUND
(8) 1/4 CORNER SECTIONS 3/2 CALCULATED POSITION FROM BLM 1995 - CORNER NOT TIED THIS SURVEY
(9) CW 1/16 CORNER SECTION 2 SET: 5/8" X 30" REBAR /W YPC "LS 2603", 0.3 FT. ABOVE GRADE
(10) C 1/4 CORNER SECTION 2 SET: 5/8" X 30" REBAR /W YPC "LS 2603", 0.3 FT ABOVE GRADE
(11) 1/4 CORNER SECTIONS 2-1 FOUND: 1963 BLM 3.25" B C, 0.5 FT ABOVE GROUND
(12) 1/4 CORNER SECTIONS 2/11 FOUND: 3/4" REBAR (EPPSTEIN) IN MOUND OF STONE



LICENSE RENEWAL DATE DECEMBER 31, 1999

NORTHWEST TIMBERLAND CONSULTING, INC. 4680 BRIARS - EUGENE, OR 97404-1113 PHONE OR FAX (541) 461-4076

- (13) C-E-NE 1/64 CORNER SECTION 2 SET: 5/8" X 30" REBAR /W YPC "LS 2603", 0.3 FT ABOVE GRADE
(14) C-E-E 1/64 CORNER SECTION 2 SET: 5/8" X 30" REBAR /W YPC "LS 2603", 0.3 FT ABOVE GRADE

MAP FILE M133-77

MAP FILE M133-77