

MAP OF SURVEY

LOCATED in Sections 5 and 8, T. 30 S., R. 3 W., W.M. in
Douglas County, Oregon.

December 1, 1999

FILED

Date: 12-14-1999 By: JP

This survey consists of:

Map: M133-66

Narrative: _____

Corner Rpt: _____

DOUGLAS COUNTY
SURVEYOR

SURVEYED FOR: *SENECA JONES TIMBER CO.*
556 NE RIFLE RANGE ROAD
ROSEBURG, OREGON 97470

SURVEYED BY: *DAVID EDWARDS LAND SURVEYING*
P.O. BOX 361
OAKLAND, OREGON 97462
PHONE: (541) 459-0512

REGISTERED
PROFESSIONAL
LAND SURVEYOR

David A. Edwards

OREGON
JULY 26, 1998
DAVID A. EDWARDS
2339

EXPIRES 12/31/99.

NARRATIVE

THE PURPOSE OF THIS SURVEY IS TO MARK THE NORTH LINE OF SENECA LANDS BETWEEN THE SE COR. OF SECTION 5 AND THE NW COR. OF SECTION 8. A RANDOM TRAVERSE WAS RUN BETWEEN MONUMENTS AND OFFSETS WERE THEN MADE TO TRUE LINE. THE TRUE LINE WAS MARKED BY SETTING STEEL POSTS ALONG SAID LINE AT INTERVALS OF 200' OR LESS, BLAZING TREES ON BOTH SIDES OF LINE AND HANGING RED FLAGGING ALONG THE LINE. THE NORTH 1/4 CORNER OF SECTION 8 WAS SET ON LINE BETWEEN THE SOUTH 1/4 CORNER OF SECTION 5 AND THE SW CORNER OF SECTION 5, EQUIDISTANT FROM THE NE AND NW CORNERS OF SECTION 8. BEARING TREES FOR SAID NORTH 1/4 CORNER WERE SCRIBED "1/4 S 8 BT" WITH MEASUREMENTS TAKEN TO NAILS SET SIDE-CENTER BELOW STUMP HEIGHT AND ARE SITUATED AS FOLLOWS:

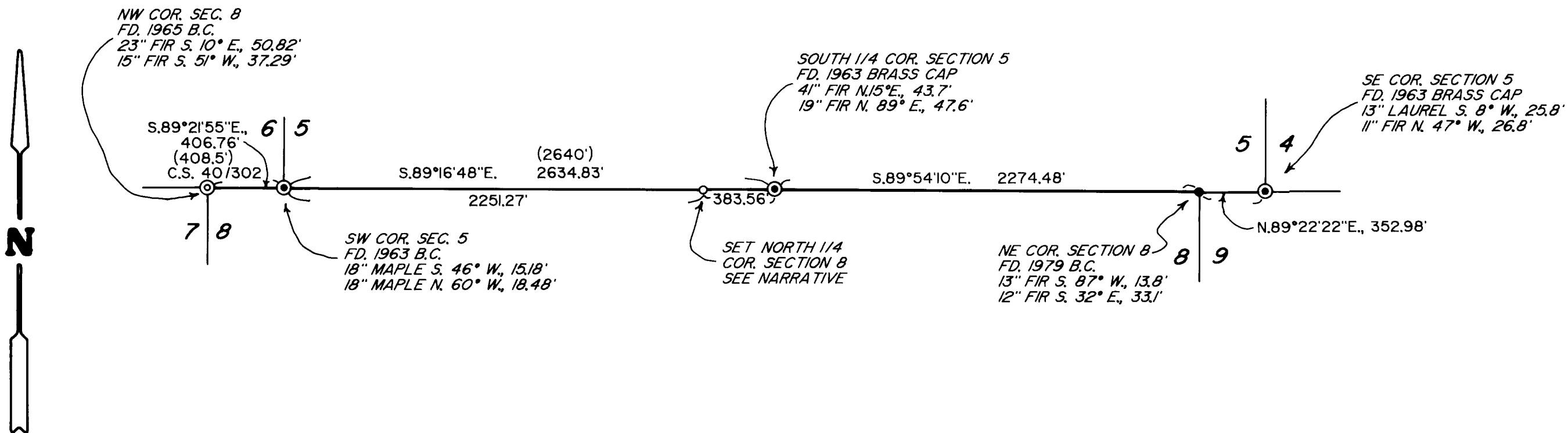
6" DIAM. FIR BEARS S. 49° E., 12.60 FEET.
7" DIAM. FIR BEARS S. 76° W., 8.57 FEET.

LEGEND

- ⊙ INDICATES D.C.S. BRASS CAP FOUND.
- ⊕ INDICATES B.L.M. BRASS CAP FOUND.
- INDICATES BRASS CAP FD. PER M 79-2.
- INDICATES 5/8" X 36" STEEL PIN W/2" DIAM. ALUM. CAP MKD. "1/4 S 8- LS 2339- 1999" SET.
- () DENOTES GOV'T. RECORD DATA UNLESS NOTED OTHERWISE.

SCALE: 1" = 600'

BASIS OF BEARINGS: GOV'T. RECORD "EAST" BETWEEN SOUTH 1/4 COR. SECTION 5 AND SE COR. SECTION 5.



MAP FILE M133-66