

FILED

Date: 12-8-1999 By: JP  
 This survey consists of:  
 Map: M133-64  
 Narrative:  
 Corner Rpt:

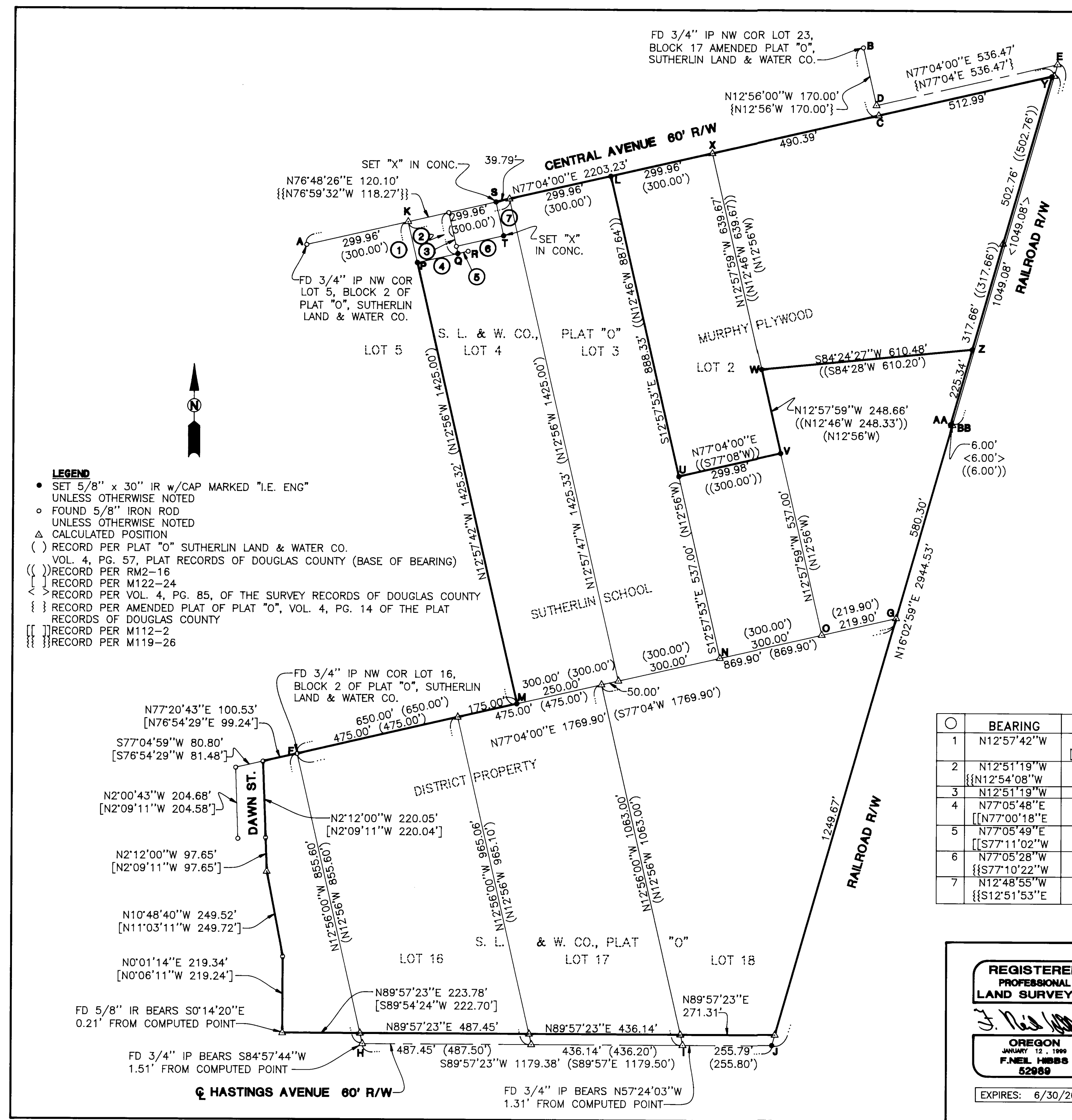
DOUGLAS COUNTY SURVEYOR

**NARRATIVE**

THE PURPOSE OF THIS SURVEY WAS TO REESTABLISH THE LINES AROUND THE SUTHERLIN SCHOOL DISTRICT PROPERTY AS WELL AS THE MURPHY PLYWOOD PROPERTY LYING SOUTH OF CENTRAL AVE. AND THEN TO MONUMENT SAME. POINT "C" WAS SET ON THE SOUTHERLY RIGHT-OF-WAY OF CENTRAL AVE. BY EXTENDING A LINE EASTERLY FROM THE 3/4" IRON PIPE AT POINT "A" TO A POINT THAT IS BOTH PERPENDICULAR TO AND RECORD DISTANCE FROM THE FOUND 3/4" IRON PIPE AT POINT "B". "A"- "C" USED AS BASE OF BEARING PER PLAT "O" S.L.&W. CO. POINT "E" WAS SET BY FIRST CREATING POINT "D" AT RECORD DISTANCE FROM "C", ON LINE WITH POINT "B" AND THEN EXTENDING A LINE EASTERLY RECORD DISTANCE FROM "D", PARALLEL TO LINE "A"- "C". A LINE WAS THEN EXTENDED EASTERLY FROM THE FOUND 3/4" IRON PIPE AT POINT "F" RECORD DISTANCE AND PARALLEL TO THE SOUTH RIGHT-OF-WAY OF CENTRAL AVE. PER PLAT "O", SUTHERLIN LAND & WATER CO. TO POINT "G". POINTS "H" AND "I" WERE CREATED BY TURNING A RECORD 90° AND RECORD DISTANCES SOUTHERLY OFF OF LINE "F"- "G" AT "F" AND RECORD DISTANCE FROM "F". POINT "J" WAS SET BY EXTENDING LINE "E"- "G" SOUTHERLY TO IT'S POINT OF INTERSECTION WITH THE EASTERLY EXTENSION OF LINE "H"- "I". POINT "K" WAS CREATED IS WITHIN 0.17 FEET OF RECORD DISTANCE FROM POINT "H" AND WITHIN 0.26 FEET OF RECORD DISTANCE FROM POINT "E". POINTS "L", "M" AND "N" WERE SET AT PROPORTIONED DISTANCES BETWEEN POINTS "A" AND "C". POINTS "O" AND "P" WERE SET AT RECORD DISTANCES BETWEEN "F" AND "G". POINT "Q" WAS SET AT RECORD DISTANCE FROM POINT "K" AND IN LINE WITH POINT "M". POINT "R" WAS SET AT THE INTERSECTION OF A LINE EXTENDED SOUTHERLY FROM THE TWO FOUND MONUMENTS TO THE NORTH AND LINE "P"- "R". POINT "S" WAS SET ON THE SOUTHERLY RIGHT-OF-WAY OF CENTRAL AVE. AT RECORD DISTANCE FROM POINT "K". POINT "T" WAS SET AT A DISTANCE-DISTANCE INTERSECTION FROM POINT "S" AND THE FOUND MONUMENT TO THE WEST OF "T". POINTS "U" AND "V" WERE SET AT RECORD DISTANCES NORTHERLY OF POINTS "N" AND "O". POINT "W" WAS SET AT RECORD DISTANCE FROM "X" ON LINE WITH POINTS "V" AND "O". POINTS "Y", "Z", "AA" AND "BB" WERE SET AT RECORD DISTANCES FROM OTHER POINTS ALREADY ESTABLISHED ALONG THE EASTERN BOUNDARY OF SAID PROPERTIES.

○	BEARING	DISTANCE
1	N12°57'42"W	121.21'
2	N12°51'19"W	121.27'
	{{N12°54'08"W	121.24'}}
3	N12°51'19"W	101.01'
4	N77°05'48"E	119.87'
	{{N77°00'18"E	118.67'}}
5	N77°05'49"E	30.12'
	{{S77°11'02"W	30.03'}}
6	N77°05'28"W	140.00'
	{{S77°10'22"W	140.00'}}
7	N12°48'55"W	100.07'
	{{S12°51'53"E	100.07'}}

- LEGEND**
- SET 5/8" x 30" IR w/CAP MARKED "I.E. ENG" UNLESS OTHERWISE NOTED
  - FOUND 5/8" IRON ROD UNLESS OTHERWISE NOTED
  - △ CALCULATED POSITION
  - ( ) RECORD PER PLAT "O" SUTHERLIN LAND & WATER CO. VOL. 4, PG. 57, PLAT RECORDS OF DOUGLAS COUNTY (BASE OF BEARING)
  - (( )) RECORD PER RM2-16
  - { } RECORD PER M122-24
  - < > RECORD PER VOL. 4, PG. 85, OF THE SURVEY RECORDS OF DOUGLAS COUNTY
  - { } RECORD PER AMENDED PLAT OF PLAT "O", VOL. 4, PG. 14 OF THE PLAT RECORDS OF DOUGLAS COUNTY
  - [ ] RECORD PER M112-2
  - [ ] RECORD PER M119-26



<p><b>REGISTERED PROFESSIONAL LAND SURVEYOR</b></p> <p><i>J. Neil Higgs</i></p> <p>OREGON                  JANUARY 12, 1999  <b>F.NEL HIGGS</b>                  52989</p> <p>EXPIRES: 6/30/2001</p>	<p><b>BOUNDARY SURVEY</b></p> <p>LYING IN THE SW 1/4 SEC. 17 AND THE NW 1/4 OF SEC. 20, T25S, R5W, W.M., DOUGLAS COUNTY, OREGON</p>	
	<p>SURVEYED FOR:</p> <p>SUTHERLIN SCHOOL DISTRICT                  P. O. BOX 500                  SUTHERLIN, OREGON 97479</p>	<p>SURVEYED BY:</p> <p><b>i.e.</b>                  ENGINEERING</p> <p>741 S.E. Jackson Street                  Roseburg, Oregon 97470                  PHONE (541) 673-0166                  FAX (541) 440-9392</p>
	<p>SCALE: 1" = 200'</p>	<p>DATE: NOV.1999</p>
	<p>JOB NO: 1170-03</p>	<p>PAGE: 1 OF 1</p>