

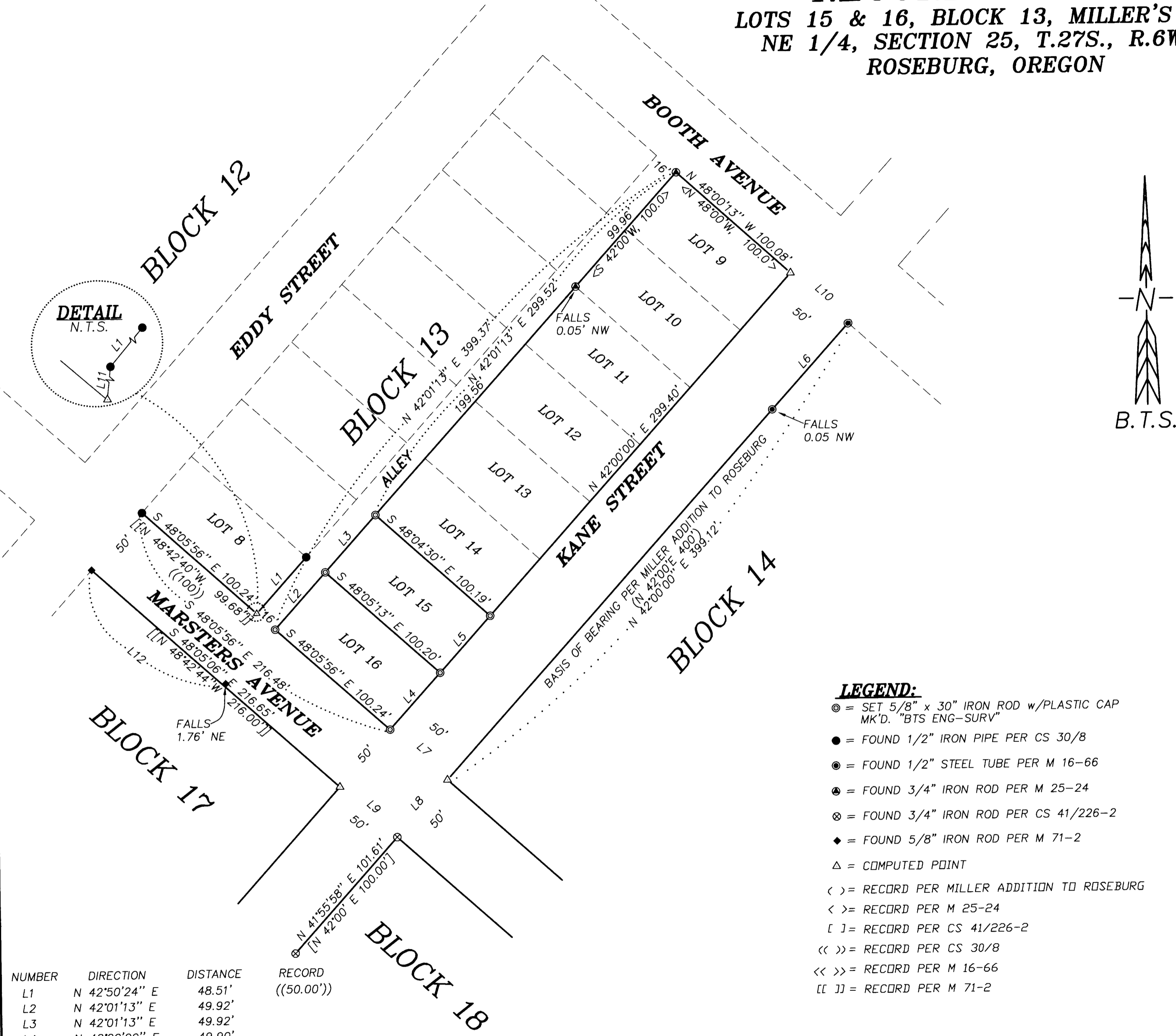
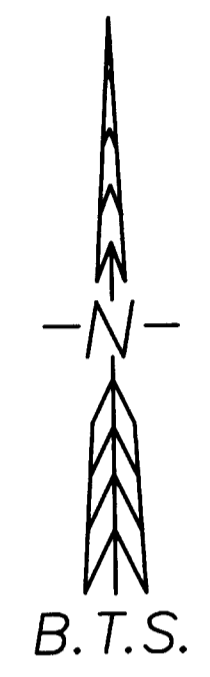
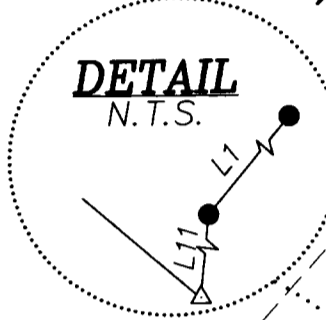
RECORD OF SURVEY

LOTS 15 & 16, BLOCK 13, MILLER'S ADDITION
NE 1/4, SECTION 25, T.27S., R.6W., W.M.
ROSEBURG, OREGON

FILED
Date: 8-9-1999 By: JP
This survey consists of:
Map: M133-6
Narrative:
Corner Rpt:

DOUGLAS COUNTY
SURVEYOR

MAP FILE M133-6



NUMBER	DIRECTION	DISTANCE	RECORD
L1	N 42°50'24" E	48.51'	((50.00'))
L2	N 42°01'13" E	49.92'	
L3	N 42°01'13" E	49.92'	
L4	N 42°00'00" E	49.90'	
L5	N 42°00'00" E	49.90'	
L6	N 42°02'09" E	75.27'	<<N 42° E, 75.16>>
L7	S 48°05'56" E	50.00'	
L8	S 42°00'00" W	50.00'	
L9	N 48°05'06" W	50.00'	
L10	S 48°00'13" E	50.00'	
L11	N 07°52'32" E	1.33'	
L12	S 48°57'29" E	115.44'	

- LEGEND:**
- ⊙ = SET 5/8" x 30" IRON ROD w/PLASTIC CAP MK'D. "BTS ENG-SURV"
 - = FOUND 1/2" IRON PIPE PER CS 30/8
 - ⊙ = FOUND 1/2" STEEL TUBE PER M 16-66
 - ⊙ = FOUND 3/4" IRON ROD PER M 25-24
 - ⊙ = FOUND 3/4" IRON ROD PER CS 41/226-2
 - ◆ = FOUND 5/8" IRON ROD PER M 71-2
 - △ = COMPUTED POINT
 - < > = RECORD PER MILLER ADDITION TO ROSEBURG
 - < > = RECORD PER M 25-24
 - [] = RECORD PER CS 41/226-2
 - << >> = RECORD PER CS 30/8
 - << >> = RECORD PER M 16-66
 - [[]] = RECORD PER M 71-2

NARRATIVE:
THE PURPOSE OF THIS SURVEY WAS TO MONUMENT THE CORNERS OF LOTS 15 AND 16 OF BLOCK 13, MILLER'S ADDITION. MONUMENTS FOUND AT THE SW CORNER OF BLOCK 13 PER CS 30/8, AT THE NW CORNER OF LOT 9, BLOCK 13 PER M 25-24, AT THE NW CORNER OF BLOCK 14 PER M 16-66 AND AT THE NW CORNER OF BLOCK 18 PER CS 41/226-2 CONTROLLED THIS SURVEY. THE NE CORNER OF BLOCK 13 WAS COMPUTED BY PROPORTIONATE DISTANCES BETWEEN THE NW CORNER OF BLOCK 14 AND THE NW CORNER OF LOT 9, BLOCK 13. THE SW CORNER OF BLOCK 14 WAS COMPUTED AT PROPORTIONATE DISTANCE BETWEEN THE NW CORNERS OF BLOCKS 14 AND 18. THE SE CORNER OF BLOCK 13 WAS THEN COMPUTED AT PROPORTIONATE DISTANCES BETWEEN THE SW CORNERS OF BLOCKS 13 AND 14. LOTS 15 AND 16 WERE THEN COMPUTED AT PROPORTIONATE DISTANCES BETWEEN THE NE, SE, AND SW CORNERS OF BLOCK 13 AND THE NW CORNER OF LOT 9, BLOCK 13. I FOUND THE NE AND SE CORNERS OF LOT 8, BLOCK 13 PER CS 30/8 AND THE NW CORNER OF LOT 9, BLOCK 17 PER M 71-2 TO BE SIGNIFICANTLY OUT OF POSITION AS SHOWN ON THE FACE OF THIS MAP.
THIS SURVEY WAS PERFORMED BY LES FANNING, MATT DIXON AND ADAM DEGROOT USING A SOKKIA SET 2BI TOTAL STATION WITH COMPUTATIONS BY KRIS DEGROOT AND DRAFTING BY BILL WARREN

REGISTERED
PROFESSIONAL
LAND SURVEYOR
Kristian O. Degroot
OREGON
JULY 17, 1981
KRISTIAN O. DEGROOT
1941
RENEWAL DATE: 12-31-99

BTS ENGINEERING & SURVEYING, INC. 431 S.E. MAIN ST., ROSEBURG, OR 97470 PHONE (541) 673-0966 FAX (541) 673-0105	SCALE: 1" = 50'	FOR: MATT ROYSTON P.O. BOX 549 GLIDE, OREGON 97443	JOB #: 99-062
	DATE: JULY, 1999		FILE: ROYSTONM.DWG SHEET 1 OF 1

MAP FILE M133-6