

# LONE ROCK TIMBER CO.

PO BOX 1127 ROSEBURG OREGON 97470 DATE: OCT. 1999  
 SECTION 12, TOWNSHIP 26 SOUTH, RANGE 2 WEST, W.M. DOUGLAS COUNTY, OREGON  
 LONE ROCK TIMBER TRACT: BUTLER SCALE: 1" = 600'

## NARRATIVE:

THIS SURVEY WAS CONDUCTED TO ESTABLISH PROPERTY LINES AND PROPERTY CORNERS FOR TIMBER CUTTING PURPOSES. WE INITIATED THIS SURVEY AT THE NORTH 1/4 OF SECTION 12. A BLM BCIP SET BY PROPORTION. BEGINNING A RANDOM TRAVERSE SOUTHERLY TO THE SOUTH 1/4 OF SECTION 12. A BLM BCIP SET BY PROPORTION. WE THEN BEGAN A RANDOM TRAVERSE SOUTHERLY TO THE SOUTH 1/4 OF SECTION 12. A BLM BCIP SET BY PROPORTION. WE THEN BEGAN A RANDOM TRAVERSE EASTERLY FROM A TRAVERSE POINT NEAR THE CENTER OF SECTION 12 TO THE EAST 1/4 OF SECTION 12 A COUNTY BCIP SET FROM ORIGINAL EVIDENCE. WE BEGAN AGAIN AT THE TRAVERSE POINT NEAR THE CENTER OF SECTION 12, TRAVERSING WESTERLY TO THE WEST 1/4 CORNER A BLM BCIP SET BY PROPORTION. WE THEN CONTINUED OUR TRAVERSE SOUTHERLY TO THE SOUTHWEST CORNER OF SECTION 12. A BLM BCIP SET FROM ORIGINAL EVIDENCE AND THEN EASTERLY TO CLOSE A PORTION OF OUR SURVEY BACK ON THE SOUTH 1/4. WE WERE THEN ABLE TO MAKE A FEW SHOTS OFF A TALL ROCK BLUFF TO ALSO TIE IN THE SOUTHEAST SECTION CORNERS OF SECTION 12, 13, 7 AND 18 TO CHECK THE BLM PROPORTION OF THE SOUTH 1/4. USING CONTROL POINTS IN OPEN GROUND NEAR EACH OF THE FOUR QUARTER CORNERS OF SECTION 12 WE CHECK OUR CLOSURE USING GPS COMPUTING A RELATIVE ACCURACY UNDER A FOOT BETWEEN EACH OF THE CONTROL POINTS. WE COMPUTED AND SET THE CENTER 1/4 AND MARKED THE PROPERTY LINES AS SHOWN HEREON. THIS SURVEY WAS DONE WITH A NIKON DTM 450 TOTAL STATION AND A TRIMBLE 4000 SE BASE WITH PRO XR ROVER GPS RECEIVERS. GARY ANGIOLET, IGNACIO ROMAN AND MARK DVORCSAK ASSISTED ME IN THIS SURVEY.

FILED

Date: 11-23-1999 By: JP  
 This survey consists of:  
 Map: M133-59  
 Narrative:  
 Corner Rpt:

DOUGLAS COUNTY  
 JP SURVEYOR

MAP FILE M133-59



BASIS OF BEARING  
 FROM BLM FIELD NOTED  
 PAGES 14273 AND 14274

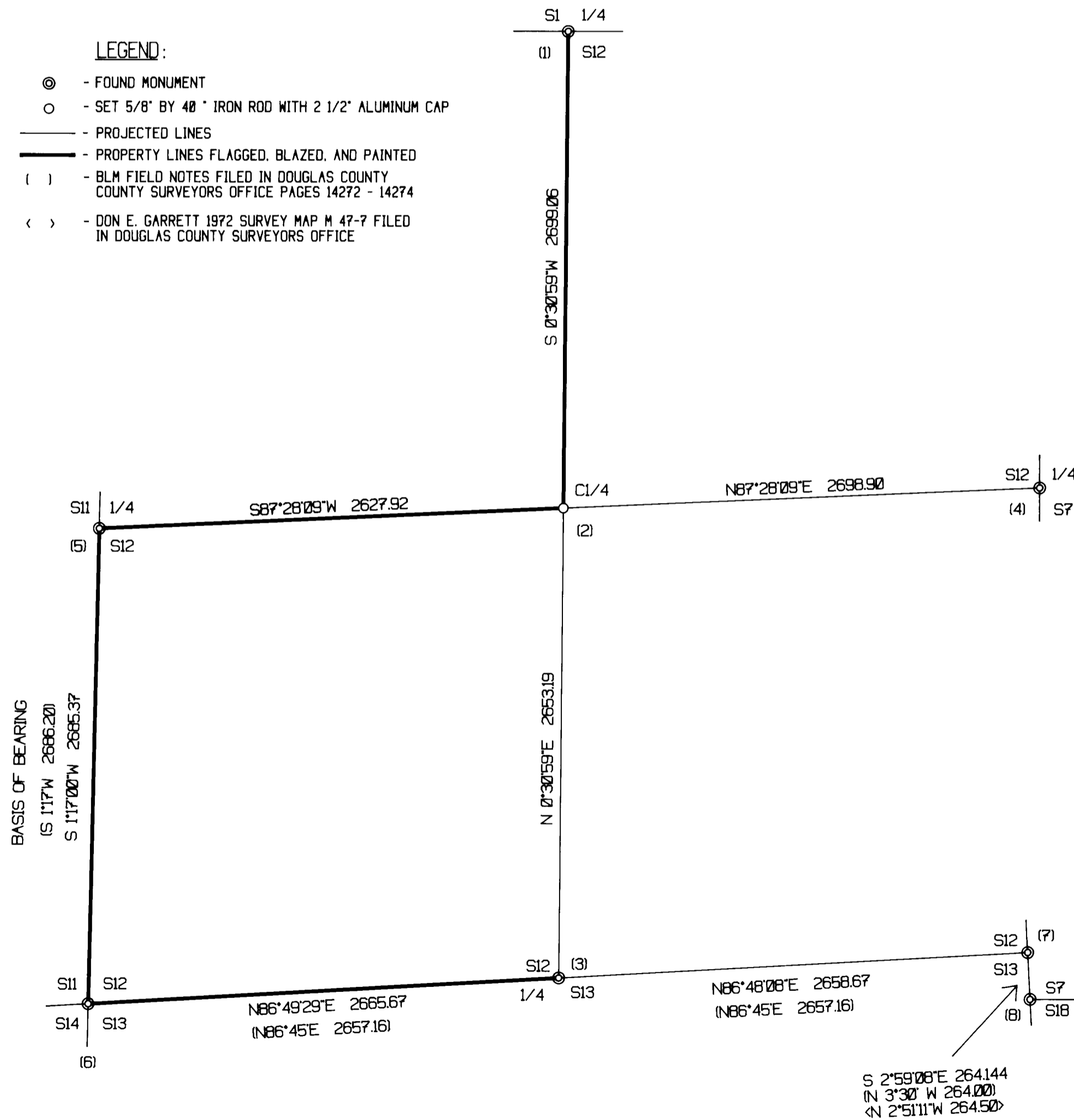
REGISTERED  
 PROFESSIONAL  
 LAND SURVEYOR

*Ken W. Hoffine*  
 OREGON  
 JULY 16, 1987  
 KEN W. HOFFINE  
 2284

EXPIRES 6-30-01

### LEGEND:

- ⊙ - FOUND MONUMENT
- - SET 5/8" BY 40" IRON ROD WITH 2 1/2" ALUMINUM CAP
- - PROJECTED LINES
- - PROPERTY LINES FLAGGED, BLAZED, AND PAINTED
- ( ) - BLM FIELD NOTES FILED IN DOUGLAS COUNTY SURVEYORS OFFICE PAGES 14272 - 14274
- < > - DON E. GARRETT 1972 SURVEY MAP M 47-7 FILED IN DOUGLAS COUNTY SURVEYORS OFFICE



### CORNER INFORMATION:

- 1) THE 1/4 CORNER BETWEEN SECTION 1 AND SECTION 12  
 FOUND 1958 BLM BRASS CAP 0.2 FEET ABOVE GROUND.  
 -- 23' DOUGLAS FIR SNAG BEARS N72 1/2'E. 5.4 FEET (RECORD N72'E. 5.28 FEET) WELL HEALED FACE AND BLM LOCATION TAG  
 -- 16" DOUGLAS FIR SNAG BEARS S12 3/4"W. 31.1 FEET (RECORD S13"W. 31.02 FEET) WELL HEALED FACE AND TAG  
 CORNER LIES WITH BLM REPROD UNIT TO SOUTH AND WEST AND IS APPROXIMATELY 300 FEET WEST OF ROCK ROAD AND 500 FEET NORTH OF ROCK ROAD
- 2) CENTER 1/4 CORNER OF SECTION 12  
 SET 5/8" X 40" IRON ROD WITH 2 1/2" ALUM. CAP MARKED LONE ROCK TIMBER  
 T 26 S R 2 W C 1/4 S12 1999 PLS 2291, 0.3 FEET ABOVE GROUND WITH TWO METAL FENCE POSTS BY CORNER  
 -- 19" DOUGLAS FIR BEARS N52°W 13.6 FEET WE SCRIBE C1/4 S12 BT AND TAG TREE  
 -- 31" DOUGLAS FIR BEARS S11 3/4"W 10.6 FEET WE SCRIBE C1/4 S12 BT AND TAG TREE  
 -- 13" DOUGLAS FIR BEARS S51°E 16.3 FEET WE SCRIBE C1/4 S12 BT AND TAG TREE  
 -- 14" DOUGLAS FIR BEARS N30 1/4'E 76.7 FEET WE SCRIBE C1/4 S12 BT AND TAG TREE  
 CORNER LIES APPROX. 45 FEET WEST OF ROAD AND APPROX. 200 FEET SOUTH FROM END OF ROAD
- 3) THE 1/4 CORNER BETWEEN SECTION 12 AND SECTION 13  
 FOUND 1968 BLM BRASS CAP IN LARGE ROCK PILE BELOW ROAD  
 -- 18" DOUGLAS FIR BEARS N85 3/4"W. 23.8 FEET. WE SCRIBE 1/4 S12 B.T. AND TAG TREE  
 -- 19" DOUGLAS FIR BEARS S34 1/2'E. 32.2 FEET. WE SCRIBE 1/4 S13 B.T. AND TAG TREE  
 -- 25" DOUGLAS FIR BEARS N84°E 199.3 FEET AS PER 1968 BLM FIELD NOTES WELL HEALED FACE AND TAG  
 -- 23" DOUGLAS FIR BEARS S12°W 147.8 FEET AS PER 1968 BLM FIELD NOTES HEALED FACE AND TAG  
 CORNER LIES APPROXIMATELY 50 FEET SOUTH AND 80 FEET EAST OF ROCK ROAD
- 4) THE EAST 1/4 CORNER FOR SECTION 12 ONLY  
 FOUND 1961 DOUGLAS COUNTY BRASS CAP.  
 -- 32" DOUGLAS FIR BEARS S41 1/2°W. 60.5 FEET (RECORD S43°W. 61.0 FEET) WELL HEALED FACE AND TAG  
 -- STUMP OF 70" FIR S21°W. 26.4 AS PER RECORD  
 CORNER LIES APPROXIMATELY 35 FEET SOUTH AND 80 FEET WEST OF NEWLY OPENED ROAD.
- 5) THE 1/4 CORNER BETWEEN SECTION 11 AND SECTION 12  
 FOUND 1968 BLM BRASS CAP.  
 -- 26" DOUGLAS FIR BEARS S64°W. 12.8 FEET (RECORD S64°W. 12.54 FEET) WELL HEALED FACE AND BLM TAG  
 -- 26" DOUGLAS FIR BEARS S64 1/2 E. 28.3 FEET (RECORD S64 E. 28.38 FEET) WELL HEALED FACE AND BLM TAG  
 CORNER LIES ON WEST EDGE OF BENCH THAT LIES BELOW EXTREMELY STEEP WEST SLOPE.
- 6) THE SOUTHWEST SECTION CORNER OF SECTION 12  
 FOUND 1968 BLM BRASS CAP.  
 -- 18" DOUGLAS FIR BEARS N46 1/2°W. 24.6 FEET (RECORD N48°W. 25.08 FEET) WELL HEALED FACE  
 -- 65" DOUGLAS FIR BEARS S48 1/2°W. 32.9 FEET (RECORD S51 1/2°W. 33.66 FEET) WELL HEALED FACE AND BLM TAG  
 -- 22" DOUGLAS FIR BEARS S62 1/2 E. 41.5 FEET (RECORD S64 E. 41.58 FEET) WELL HEALED FACE AND BLM TAG  
 -- 21" DOUGLAS FIR BEARS N57°E. 41.2 FEET (AS PER RECORD) WELL HEALED FACE AND BLM TAG  
 CORNER LIES ON SW SLOPE APPROXIMATELY 130 FEET SOUTH AND 250 FEET WEST OF ROCK ROAD.
- 7) THE SOUTHEAST CORNER OF SECTION 12  
 FOUND 1966 DOUGLAS COUNTY BRASS CAP IN MOUND OF ROCKS  
 -- 27" DOUGLAS FIR SNAG BEARS N54 1/2°W 34.8 FEET (RECORD N55°W 34.65 FEET) VISIBLE BARK SCRIBING  
 -- 13" DOUGLAS FIR BEARS S46 1/2°W 12.5 FEET (RECORD S47 1/4°W 13.86 FEET) HEALED FACE AND BT TAG  
 CORNER LIES ON STEEP SOUTH FACING SLOPE APPROX. 80 FEET SOUTH OF BOTTOM OF ROCK BLUFF
- 8) THE SOUTHWEST CORNER OF SECTION 7  
 FOUND 1972 BRASS CAP SET BY GARRETT IN MAP M 47-7  
 -- 10" DOUGLAS FIR BEARS N50 3/4°E 29.4 FEET (RECORD N52°E 29.1 FEET) HEALED FACE AND BT TAG  
 -- 11" DOUGLAS FIR BEARS S20 1/2°E 26.2 FEET (RECORD S18 1/2°E FEET) HEALED FACE AND BT TAG  
 CORNER LIES ON STEEP ROCKY SOUTH SLOPE

S 2°59'08"E 264.144  
 N 3°30' W 264.000  
 N 2°51'11"W 264.500

MAP FILE M133-59