

LONE ROCK TIMBER CO.

PO BOX 1127 ROSEBURG OREGON 97470
SECTION 36, TOWNSHIP 28 SOUTH, RANGE 9 WEST, W.M.
LONE ROCK TIMBER TRACT - COOS HEAD

DATE: NOV. 1999
DOUGLAS COUNTY, OREGON
SCALE 1" = 500'

FILED

Date: 11-23-1999 By: JP
This survey consists of:
Map: M133-58
Narrative: _____
Corner Rpt: _____

DOUGLAS COUNTY
SURVEYOR JP

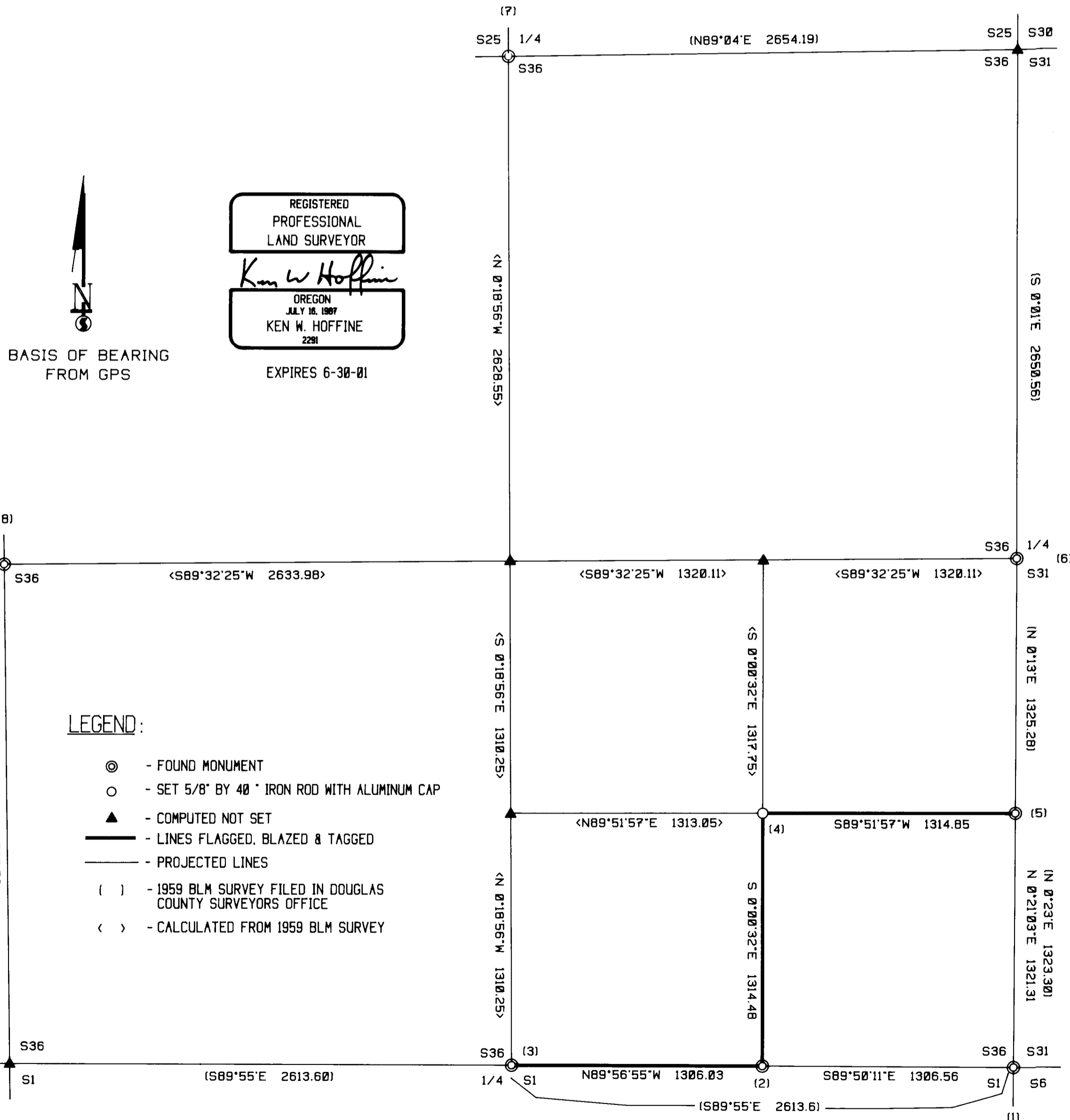
NARRATIVE

THIS SURVEY WAS CONDUCTED TO ESTABLISH PROPERTY CORNERS AND PROPERTY LINES FOR TIMBER CUTTING PURPOSES. WE INITIATED THIS SURVEY AT THE SOUTHEAST CORNER OF SECTION 36 SET FROM PERPETUATED ORIGINAL EVIDENCE BEGINNING A RANDOM TRAVERSE WESTERLY TO 1" IRON PIPE SET FOR THE E 1/16 FROM UNKNOWN ORIGINS. WE CONTINUED WESTERLY TO THE S 1/4 OF SECTION 36 A BLM BCIP SET BY PROPORTION WITH A 1" IRON PIPE UNKNOWN ORIGIN. WE THEN RETURNED TO THE E 1/16 CORNER AND BEGAN TRAVERSING NEAR PROPERTY LINES NORTH AND THEN EAST TO THE S 1/16 CORNER A BLM BCIP SET ALONG SIDE A 1" IRON PIPE. CONTINUING OUR TRAVERSE SOUTHERLY TO THE SE SECTION CORNER TO CLOSE A PORTION OF OUR SURVEY. WE CHECKED CLOSURE OF OUR SURVEY FROM THE SESC TO THE S 1/4 FOR ACCEPTABLE CLOSURE WITH GPS AND WE ALSO LOCATED AND TIED IN THE EAST 1/4, WEST 1/4 AND NORTH 1/4 CORNERS WITH SUB METER GPS TO CHECK RELATIVE LOCATION OF THESE CORNERS TO BLM RECORD. USING OUR SURVEY AND BLM RECORD, WE COMPUTED A PROPERTY CORNER NEAR THE SOUTHEAST 1/16 CORNER OF SECTION 36 FOR WHICH OWNERS ON BOTH SIDES OF THE AFFECTED PROPERTY LINES HAVE AGREED TO SIGN A BOUNDARY LINE AGREEMENT. WE BLAZED, PAINTED, TAGGED AND FLAGGED THE PROPERTY LINES AND SET THE PROPERTY CORNER AS SHOWN ON THE MAP HEREON. THIS SURVEY WAS DONE WITH A NIKON DTM450 TOTAL STATION, TRIMBLE 4000 SI GPS SURVEY BASE RECEIVER AND TWO PRO XR GPS ROVER RECEIVERS WITH GARY ANGIOLET AND IGNACIO ROMAN ASSISTING ME.

CORNER INFORMATION:

THE FOLLOWING IS A RECORD OF ALL CORNERS FOUND OR SET DURING THE COURSE OF THIS SURVEY

- 1) SOUTHEAST SECTION CORNER FOR SECTION 36
FOUND 1959 BLM BRASS CAP WITH 1" IRON PIPE ON SOUTH SIDE OF CAP.
-- 28" DOUGLAS FIR BEARS S7 3/4"W, 22.8 FEET (RECORD S6 1/2"W, 22.8 FEET) WELL HEALED FACE AND BLM TAG
-- 32" DOUGLAS FIR BEARS N76 1/4"E, 21.5 FEET (RECORD N76"E, 21.1 FEET) WELL HEALED FACE AND BLM TAG
CORNER LIES ON FLAT GROUND APPROXIMATELY 120 FEET SOUTH OF MAIN ROCK ROAD. FENCE CORNER WITH FENCE RUNNING EAST AND SOUTH BEARS SOUTH 1.5 FEET FROM CORNER.
- 2) EAST 1/16 CORNER BETWEEN SECTION 1 AND SECTION 36
FOUND 1" UNRECORDED IRON PIPE 0.6 FEET ABOVE GROUND.
-- 23" WHITE FIR BEARS S76"E, 5.5 FEET WELL HEALED FACE AND B.T. TAG WHICH READS N73 1/2"W, 5.5 FEET
-- 17" WHITE FIR BEARS N76"E, 17.8 FEET WE SCRIBE E1/16 S36 BT AND TAG TREE
CORNER LIES AT TOE OF EAST FACING SLOPE, LOGGED UNIT TO NORTHEAST.
- 3) THE 1/4 CORNER BETWEEN SECTION 1 AND SECTION 36
FOUND 1959 BLM BRASS CAP WITH 1" IRON PIPE ON SOUTH SIDE OF CAP. A DOUGLAS COUNTY CORNER PROTECTION POST BEARS APPROXIMATELY EAST 3 FEET.
-- 16" DOUGLAS FIR BEARS S11 1/2"E, 25.2 FEET (RECORD S6"E, 24.3 FEET) WELL HEALED FACE AND BLM TAG
-- 17" WHITE FIR BEARS N76 3/4 W, 17.6 FEET, WELL HEALED FACE NO RECORD
CORNER LIES ON SOUTH SIDE OF OVERGROWN CAT ROAD APPROXIMATELY 1.5 FEET BELOW SURFACE OF THE ROAD.
- 4) PROPERTY CORNER
SET 5/8" X 40" IRON ROD WITH PLASTIC CAP MARKED LONE ROCK TIMBER PLS 2291.
-- 16" DOUGLAS FIR BEARS N74 1/2"E, 15.8 FEET, WE SCRIBE B.T. AND TAG TREE
-- 18" DOUGLAS FIR BEARS S8"E, 18.7 FEET, WE SCRIBE B.T. AND TAG TREE
CORNER ON EAST SLOPE APPROXIMATELY 150 FEET EAST OF NEWLY OPENED DIRT ROAD.
- 5) THE SOUTH 1/16 CORNER BETWEEN SECTIONS 31 AND 36
FOUND 1959 BLM BRASS CAP WITH BENT 2 FOOT TALL 1" IRON PIPE ON SOUTH SIDE OF CAP.
-- 18" CEDAR BEARS S38"E, 2.6 FEET (RECORD S45"E, 3.3 FEET) WELL HEALED FACE AND BOTH BLM AND LRT B.T. TAGS
-- 23" DOUGLAS FIR BEARS N89"W, 24.7 FEET (RECORD N89 1/4"W, 25.00 FEET) WELL HEALED FACE AND BLM TAG
CORNER LIES ON SOUTHWEST SLOPE WITH FENCE LINES RUNNING APPROXIMATELY SOUTH AND WEST FROM CORNER.
- 6) THE EAST 1/4 CORNER OF SECTION 36
FOUND 1959 BLM BRASS CAP WITH AXLE ALONG SIDE
-- 13" WHITE FIR BEARS S62"W 24.2 FEET (RECORD S59 1/2"W 24.1 FEET) FAINT SCAR AND TAG
-- 28" CEDAR SNAG BEARS S43"E 43.4 FEET (RECORD S43"E 43.6 FEET) VISIBLE SCRIBING AND TAG
-- 40" ORIGINAL DOUGLAS FIR S85"E 7.26 FEET IS NOW A BURNED OUT 2 FOOT TALL SHELL WITH NO MARKS
-- 50" ORIGINAL DOUGLAS FIR N20"W 11.88 FEET IS A BURNED OUT STUMP WITH NO VISIBLE MARKS
CORNER LIES ON MODERATE NORTHEAST SLOPE, ON SOUTHWEST CORNER OF FLAT BENCH
- 7) THE NORTH 1/4 CORNER OF SECTION 36
FOUND 1959 BLM BRASS CAP
-- 15" DOUGLAS FIR BEARS S20"E 8.3 FEET AS PER BLM RECORD WELL HEALED SCAR AND TAG
-- 17" DOUGLAS FIR BEARS N73"E 23.2 FEET (RECORD N73"E 23.1 FEET) HEALED SCAR AND TAG
CORNER LIES ON 40% SOUTH SLOPE IN SHALLOW WIDE HEADWALL APPROX. 40 FEET NORTH OF STEEP SOUTH SLOPE
- 8) THE WEST 1/4 CORNER OF SECTION 36
FOUND 1959 BLM BRASS CAP
-- 22" DOUGLAS FIR BEARS S85"W 44.9 FEET AS PER BLM RECORD WELL HEALED FACE AND TAG
-- 24" CEDAR BEARS N56"E 55.4 FEET AS PER BLM RECORD WELL HEALED FACE AND TAG
CORNER LIES ON TOP OF ROCK BLUFF WHICH BEARS SOUTHEAST



REGISTERED PROFESSIONAL LAND SURVEYOR
Ken W. Hoffine
OREGON JULY 16, 1987
KEN W. HOFFINE 2291
EXPIRES 6-30-01

BASIS OF BEARING FROM GPS

LEGEND:

- ⊙ - FOUND MONUMENT
- - SET 5/8" BY 40" IRON ROD WITH ALUMINUM CAP
- ▲ - COMPUTED NOT SET
- - LINES FLAGGED, BLAZED & TAGGED
- - PROJECTED LINES
- () - 1959 BLM SURVEY FILED IN DOUGLAS COUNTY SURVEYORS OFFICE
- < > - CALCULATED FROM 1959 BLM SURVEY

MAP FILE M133-58

MAP FILE M133-58