

COUNTY SURVEYORS FILE DATA
DO NOT REMOVE FROM OFFICE

FILED

Date: 11-18-1999 By: JP
 This survey consists of:
 Map: M133-54
 Narrative: _____
 Corner Rpt: _____

DOUGLAS COUNTY
 SURVEYOR

LEGEND,

- MONUMENTS FOUND AND USED FOR CONTROL
- MONUMENTS SET - 5/8" x 30" IRON PINS WITH YELLOW PLASTIC CAPS. CAPS STAMPED ROBERTS SURVEYING INC.

() DATA OF RECORD - 1957 G.L.O. SURVEY BY LYNN M. ROSEBERRY

--- LINES MARKED WITH RED PAINTED BLAZES, RED PLASTIC RIBBON AND RED METAL FENCE POSTS.

BASIS OF BEARING - WEST 1/2 OF NORTH LINE SECTION 12 FROM 1957 G.L.O. SURVEY.

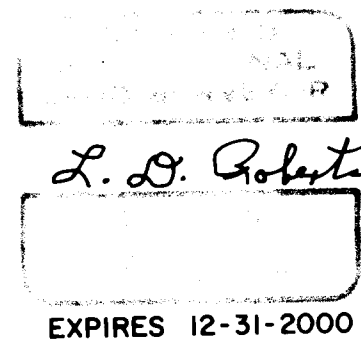
DISTANCES TO BEARING TREES ARE CENTER MEASURE

ALL NEW BEARING TREES ARE SCRIBED AND HAVE A METAL WASHER STAMPED P.L.S. NAILED TO LOWER BLAZE. A 6" SPIKE WAS DRIVEN INTO THE SIDE OF THE BEARING TREES AND USED AS A CHAINING POINT FOR MEASURED DISTANCES.

----- DIRT OR GRAVEL ROAD ~~~~~ RIDGE

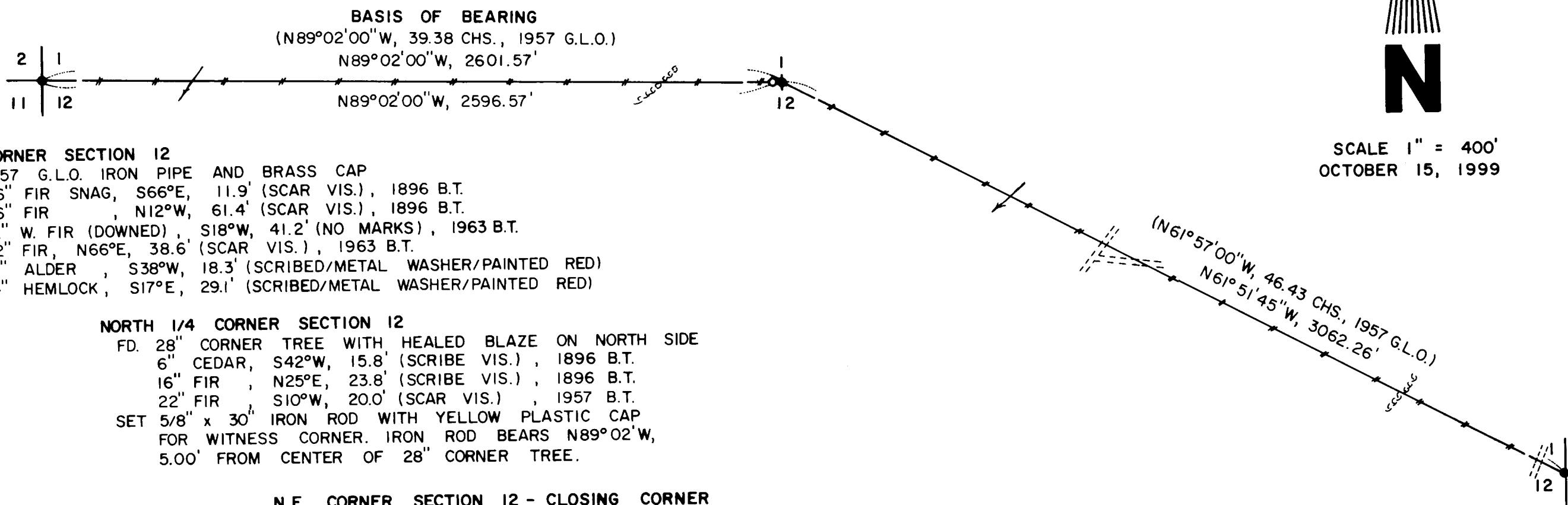
————— CREEK OR DRAW

BOUNDARY SURVEY
 FOR
 SENECA JONES TIMBER COMPANY
 ALONG
 NORTH LINE SECTION 12
 T24S, R4W, W.M.
 DOUGLAS COUNTY, OREGON
 BY
 ROBERTS SURVEYING INC.
 P.O. BOX 7155
 EUGENE, OREGON 97401
 PHONE 345-1112



NARRATIVE, THE PURPOSE OF THIS SURVEY IS TO BLAZE AND POST THE NORTH LINE OF SECTION 12. A WITNESS CORNER WAS SET TO REFERENCE THE CORNER TREE MARKING THE NORTH 1/4 CORNER OF SECTION 12. THE N.W. SECTION CORNER, THE NORTH 1/4 CORNER AND THE N.E. SECTION CORNER WERE FOUND IN THE FIELD AND USED AS CONTROL FOR THIS SURVEY. A CLOSED RANDOM PROPERTY LINE TRAVERSE, USING A WILD T-16 THEODOLITE AND A DI-4L E.D.M., WAS RUN BETWEEN THE CONTROLLING CORNERS FOUND IN THE FIELD. OFFSETS WERE COMPUTED FROM THIS RANDOM PROPERTY LINE TRAVERSE TO THE TRUE PROPERTY LINE. PROPERTY LINES WERE MARKED WITH RED PAINTED BLAZES, RED PLASTIC RIBBON AND RED METAL FENCE POSTS.

MAP FILE M133-54



SCALE 1" = 400'
 OCTOBER 15, 1999

N.W. CORNER SECTION 12

- FD. 1957 G.L.O. IRON PIPE AND BRASS CAP
- 36" FIR SNAG, S66°E, 11.9' (SCAR VIS.), 1896 B.T.
- 36" FIR, N12°W, 61.4' (SCAR VIS.), 1896 B.T.
- 12" W. FIR (DOWNED), S18°W, 41.2' (NO MARKS), 1963 B.T.
- 32" FIR, N66°E, 38.6' (SCAR VIS.), 1963 B.T.
- SET 8" ALDER, S38°W, 18.3' (SCRIBED/METAL WASHER/PAINTED RED)
- 14" HEMLOCK, S17°E, 29.1' (SCRIBED/METAL WASHER/PAINTED RED)

NORTH 1/4 CORNER SECTION 12

- FD. 28" CORNER TREE WITH HEALED BLAZE ON NORTH SIDE
- 6" CEDAR, S42°W, 15.8' (SCRIBE VIS.), 1896 B.T.
- 16" FIR, N25°E, 23.8' (SCRIBE VIS.), 1896 B.T.
- 22" FIR, S10°W, 20.0' (SCAR VIS.), 1957 B.T.
- SET 5/8" x 30" IRON ROD WITH YELLOW PLASTIC CAP FOR WITNESS CORNER. IRON ROD BEARS N89°02'W, 5.00' FROM CENTER OF 28" CORNER TREE.

N.E. CORNER SECTION 12 - CLOSING CORNER

- FD. 1950 G.L.O. IRON PIPE AND BRASS CAP
- 28" FIR STUMP, N31°W, 25.1' (SCRIBE VIS.), 1950 B.T.
- 14" CEDAR, S79°W, 28.2' (SCAR VIS.), 1963 B.T.
- SET 5" FIR, N42°E, 19.2' (SCRIBED/METAL WASHER/PAINTED RED)
- 5" FIR, S40°E, 34.1' (SCRIBED/METAL WASHER/PAINTED RED)

MAP FILE M133-54