

SECTION CORNER FOUND
 OSBF P/C, 1958 (IN PLACE)
 27" FIR (1958) N26°E 45.9' (NOW 51" X 3' HIGH STUMP IN PLACE, FACE CLOSED, WEYCO TAG)
 15" FIR (1958) N43°W 37.8' (NOW 21" X 7' LONG UPROOT, FACE CLOSED, WEYCO TAG AND YMLP)
 22" FIR (1958) S42°E 23.4' YMLP (NOW 26" X 2 1/2' HIGH ROTTEN STUMP IN PLACE, FACE EXPOSED AND ROTTEN, WEYCO TAG) BTT
 24" FIR (1958) S66°W 74.1' (NOW MISSING FALLS IN OLD ROAD)
 6" X 2' HIGH CHINQUAPIN STUMP (WEYCO) S28°W 12.8' (NOW VERY ROTTED STUMP IN PLACE)
 4" FIR (DCS, 1992) S17 1/4E 35.3' (NOW 8" IN PLACE, FACE CLOSED) BTT
 5" CHINQUAPIN (DCS, 1992) S26°W 13.2' (NOW 7" IN PLACE, SCRIBES VISIBLE) BTT
REWITNESSED
 WP S34°W 2.85' TO BASE
 WP N50°W 3.85' TO BASE
 WP N47°E 3.35' TO BASE

SURVEY FOR:
 STATE OF OREGON - DEPARTMENT OF FORESTRY
SECTION 27, T.23S., R.10W., W.M.
 DOUGLAS COUNTY, OREGON
 THEODOLITE AND EDM SURVEY BY: J.M. MCINTOSH
 J. ROSS, R.C. HALL AND T. VAN VLEET
 DRAWN BY: T. VAN VLEET
 JULY 22, 1999
 SCALE 1" = 400'

SURVEY BY:
 REGISTERED
 PROFESSIONAL
 LAND SURVEYOR

JAMES M. MCINTOSH
 OREGON
 JULY 13, 1984
 JAMES M. MCINTOSH
 2103

JAMES M. MCINTOSH
 379 16TH AVE.
 COOS BAY, OREGON

FILED
 Date: 8-26-1999 By: J.P.
 This survey consists of:
 Map: M133-14
 Narrative: _____
 Corner Rpt: _____
DOUGLAS COUNTY SURVEYOR

EXPIRATION DATE OF CERTIFICATE 12-31-00

SURVEY NARRATIVE TO COMPLY WITH PARAGRAPH 209.250 OREGON REVISED STATUTES

LEGEND

- OSBF P/C = OREGON STATE BOARD OF FORESTRY 1 1/2" X 36" GALVANIZED IRON PIPE WITH 3" BRONZE CAP
- OSDF P/C = OREGON STATE DEPARTMENT OF FORESTRY 1 1/2" X 36" ALUMINUM PIPE WITH 3 3/4" ALUMINUM CAP WITH MAGNETIC INSERT
- DCS P/C = DOUGLAS COUNTY SURVEYOR 2 1/2" IRON PIPE WITH BRASS CAP
- ESFS = ELLIOTT STATE FOREST SURVEY, 1933
- ⊙ = MONUMENT FOUND
- ⊙ = MONUMENT REESTABLISHED
- ⊙ = ORANGE CARSONITE MARKER CBM-250 LABELED WITNESS POST
- ⊙ = ORANGE CARSONITE MARKER AND STATION CBM-250 LABELED BOUNDARY MARKER
- ⊙ = TRUE BLAZED AND POSTED
- ⊙ = YELLOW METAL LOCATION POSTER
- ⊙ = 4" X 4" X 72" WHITE PAINTED CEDAR POST
- ⊙ = BEARING TREE TAG
- ⊙ = BEARING TREE
- ⊙ = IN GROUND
- ⊙ = WEYERHAEUSER
- ⊙ = RECORD BEARING AND DISTANCE IN CHAINS LEVI WALKER, 1906, CONTRACT NO. 763

PROCEDURE

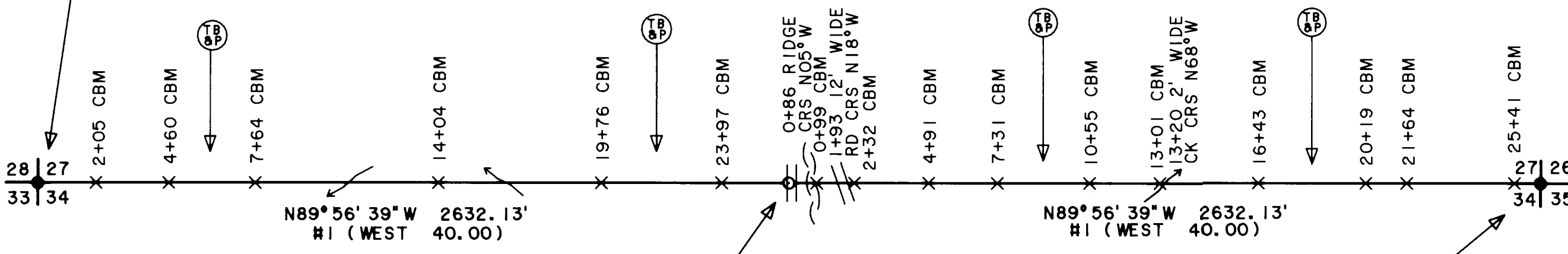
I FIND NO REMAINING EVIDENCE OF THE ORIGINAL ONE QUARTER CORNER COMMON TO SECTIONS 27 AND 34 ESTABLISHED BY LEVI WALKER IN 1906. ALSO, I DID NOT FIND THE CORNER MONUMENT OR ACCESSORIES AS RECORDED IN THE 1961 A.G. GIBSON RESTORATION.

ADMINISTRATIVE RECORDS OBTAINED FROM WEYERHAEUSER COMPANY INDICATE THAT WEYERHAEUSER FORESTERS VISITED THIS CORNER IN 1978. THEY FOUND THE PIPE AND CAP SET IN 1961 BY A.G. GIBSON POSITIONED ON THE OUTER EDGE OF A SPUR ROAD, AS WELL AS TWO BEARING TREES AND A WHITE PAINTED CEDAR POST. THE NOTES INDICATE THAT THEY REFERENCED THIS CORNER BY DRIVING SPIKES INTO TWO FIR STUMPS AND ONE LIVE MAPLE TREE AND RECORDED THE BEARINGS AND DISTANCES TO THE CORNER. BOTH FIR STUMPS WITH SPIKES REMAIN IN TACT AT PRESENT, BUT THE MAPLE TREE HAS BEEN OBLITERATED.

I FOUND A 1" IRON PIPE IN THE VICINITY OF THE ONE QUARTER CORNER, HOWEVER, I AM UNABLE TO LOCATE ANY RECORD OF THIS PIPE. THE IRON PIPE IS LOCATED ON THE OUTER EDGE OF A DIRT SPUR ROAD. ASSUMING WEYERHAEUSER SET THIS PIPE, BEARINGS AND DISTANCES WERE MEASURED FROM THE FIR STUMPS TO THE 1" IRON PIPE. THE DISTANCES DID NOT FALL WITHIN AN ACCEPTABLE RANGE BASED ON WEYERHAEUSER RECORD INFORMATION.

I AM UNABLE TO ACCEPT THE 1" IRON PIPE AS THE TRUE POSITION OF THE ONE QUARTER CORNER COMMON TO SECTIONS 27 AND 34 DUE TO LACK OF RECORD INFORMATION. ALSO, SINCE I DID NOT FIND ANY PHYSICAL EVIDENCE TO SUPPORT THE ORIGINAL CORNER POSITION I REESTABLISHED THE ONE QUARTER CORNER BY SINGLE PROPORTIONATE MEASUREMENT UNDER THE PROCEDURES AS OUTLINED IN THE "MANUAL OF INSTRUCTIONS FOR THE SURVEY OF PUBLIC LANDS OF THE U.S." 1973

A RANDOM TRAVERSE, USING A WILD T1000 THEODOLITE AND A DI 1600 EDM, WAS USED TO CONNECT CONTROLLING CORNERS. BEARINGS AND DISTANCES WERE COMPUTED AND OFFSETS CALCULATED TO POINTS ON TRUELINE FOR CARSONITE BOUNDARY MARKERS. ALL CREEKS AND ROADS ARE AT APPROXIMATE LOCATIONS UNLESS OTHER WISE INDICATED. ALL CORNER ACCESSORIES WERE MARKED AS OUTLINED IN THE "MANUAL OF INSTRUCTIONS FOR THE SURVEY OF PUBLIC LANDS OF THE U.S." 1973. BEARINGS TO ACCESSORIES WERE TAKEN WITH A STAFF COMPASS SET AT 20 1/2° EAST MAGNETIC DECLINATION. DISTANCES WERE MEASURED TO AN ALUMINUM NAIL IN BT FACE. FOR A DETAILED REPORT ON FOUND CORNERS SEE COUNTY RECORDS.



1/4 CORNER REESTABLISHED
 OSDF P/C 34" IG
 18" FIR N01°E 69.7' TO ALUMINUM NAIL IN BT FACE SCRIBED (1/4S27BT) BTT
 WP N52°E 3.5' TO BASE
 7" HEMLOCK S02°E 4.7' TO ALUMINUM NAIL IN BT FACE SCRIBED (1/4S34BT) BTT
 WP S38°W 1.8' TO BASE
 1" IRON PIPE S73°E 0.45'

SECTION CORNER FOUND
 DCS P/C, 1964 (IN PLACE)
 18" HEMLOCK (ESFS) S51°W 31.0' (NOW 28" X 6' HIGH STUMP IN PLACE, FACE VERY ROTTED, PARTIAL SCRIBES VISIBLE) BTT
 28" FIR (ESFS) N08 1/2°E 33.0' (NOW 40" X 1' HIGH VERY ROTTED STUMP IN PLACE, EXPOSED PARTIAL SCRIBES) BTT
 20" CEDAR (ESFS) N23°W 5.0' (NOW WINDFALL DOWN HILL)
 24" CEDAR (DCS, 1964) S10°E 22.4' (NOW 24" X 30' SNAG IN PLACE, SCRIBES VISIBLE) BTT
 24" HEMLOCK (DCS, 1964) S37°W 33.9' (NOW 27" X 8' HIGH STUMP IN PLACE, FACE CLOSED) BTT

REWITNESSED
 11" HEMLOCK N62°E 32.6' TO ALUMINUM NAIL IN BT FACE SCRIBED (T23SR10WS26BT) BTT
 WP S61°E 2.0' TO BASE
 6" FIR S35°W 24.0' TO ALUMINUM NAIL IN BT FACE SCRIBED (T23SR10WS34BT) BTT
 WP N49°W 1.4' TO BASE

NOTE: INFORMATION BELOW IS TAKEN FROM WEYERHAEUSER RECORDS DATED 1978.
 55" FIR STUMP N24°W 121.3'
 20" FIR STUMP N77 1/2°E 65.1'
 10" MAPLE S82 1/2°W 62.2'
 BEARINGS AND DISTANCES WERE MEASURED FROM THE SPIKES IN THE TWO REMAINING FIR STUMPS TO THE 1" IRON PIPE. THOSE MEASUREMENTS ARE SHOWN BELOW:
 55" X 2' HIGH ROTTED STUMP N19°W 121.9'
 14" X 1' HIGH ROTTED STUMP N77°E 68.0'

BASIS OF BEARING

SOLAR OBSERVATION - HOUR ANGLE METHOD

PURPOSE

TO SEPARATE STATE FOREST LAND AND PRIVATE LANDS LOCATED IN SECTION 27, TOWNSHIP 23 SOUTH, RANGE 10 WEST, WILLAMETTE MERIDIAN.

