

# LONE ROCK TIMBER CO.

FILED

Date: 7-28-1999 By: SP  
 This survey consists of:  
 Map: M133-1  
 Narrative:  
 Corner Ppt: \_\_\_\_\_

PO BOX 1127 ROSEBURG, OREGON 97470 SURVEY: STONEROD #3 TRACT  
 SE1/4 SECTION 32, TOWNSHIP 30 SOUTH, RANGE 02 WEST, W.M. DOUGLAS COUNTY, OREGON

## NARRATIVE

SCALE: 1" = 300' DATE: JULY 1999

THIS SURVEY WAS CONDUCTED TO ESTABLISH PROPERTY CORNERS AND PROPERTY LINES FOR TIMBER CUTTING PURPOSES. WE INITIATED THIS SURVEY AT THE SOUTHEAST CORNER OF SECTION 32 AN IRON ROD SET FROM PERPETUATED ORIGINAL EVIDENCE AND RUPPERT'S BCIP WITNESS CORNER SET ON THE EAST SECTION LINE. WE BEGAN RUNNING A RANDOM TRAVERSE ALONG AND NEAR SUBDIVISION LINES TO THE SOUTH 1/4 OF SECTION 32 A COUNTY BC ALSO SET FROM PERPETUATED ORIGINAL EVIDENCE. WE CONTINUED OUR TRAVERSE NORTH TO EVANS 1951 CENTER 1/4 LOCATION AND THEN EASTERLY TO CLOSE OUR SURVEY ON RUPPERT'S BRASS CAP NEXT TO THE ORIGINAL STONE AS CALLED FOR IN THE ORIGINAL NOTES AS THE COMMON 1/4 CORNER FOR SECTIONS 32 AND 33. THE ORIGINAL PLAT LOTTING FOR SECTION 32 CALCULATES FOR THE 1/4 CORNER BETWEEN SECTIONS 32 AND 33 TO NOT BE COMMON. DISCUSSION WITH THE PORTLAND BLM CADASTRAL OFFICE CONCLUDED ACCEPTANCE OF THE COMMON CORNER DUE TO LONG TERM USE. THE BLM ALSO RECOMMENDED TO USE THE ORIGINAL CALL 0.72 CHAINS OF EXCESS CORRECTION FOR THE ENTIRE MILE TO BE PROPORTIONED FOR LOTTING AS PER THE ORIGINAL PLAT IN THE SOUTH MILE. WE ALSO RAN A TRAVERSE FROM NEAR THE EAST 1/16 CORNER NORTHERLY TO AN APPROXIMATE SE 1/16 CORNER AND THEN WESTERLY TO TIE OUR SURVEY BACK IN NEAR THE CENTER SOUTH 1/16. WE COMPUTED THE SUBDIVISION OF THE SE 1/4 OF SECTION 32 AND SET THE CENTER SOUTH 1/16, SOUTHEAST 1/16 AND EAST 1/16 CORNERS AS SHOWN HEREON. WE MARKED THE PROPERTY LINES AS SHOWN USING OUR TRAVERSE OFFSET NOTES EXCEPT FOR THE EAST LINE OF THE SE 1/4 OF SECTION 32 WE MARKED FOLLOWING USFS PROPERTY LINE BOUNDARY SIGNS AND OLDER BLAZING. THIS SURVEY WAS DONE WITH A NIKON DTM 450 TOTAL STATION WITH GARY ANGIOLET, JERRY RAGON, AND IGNACIO ROMAN ASSISTING ME.

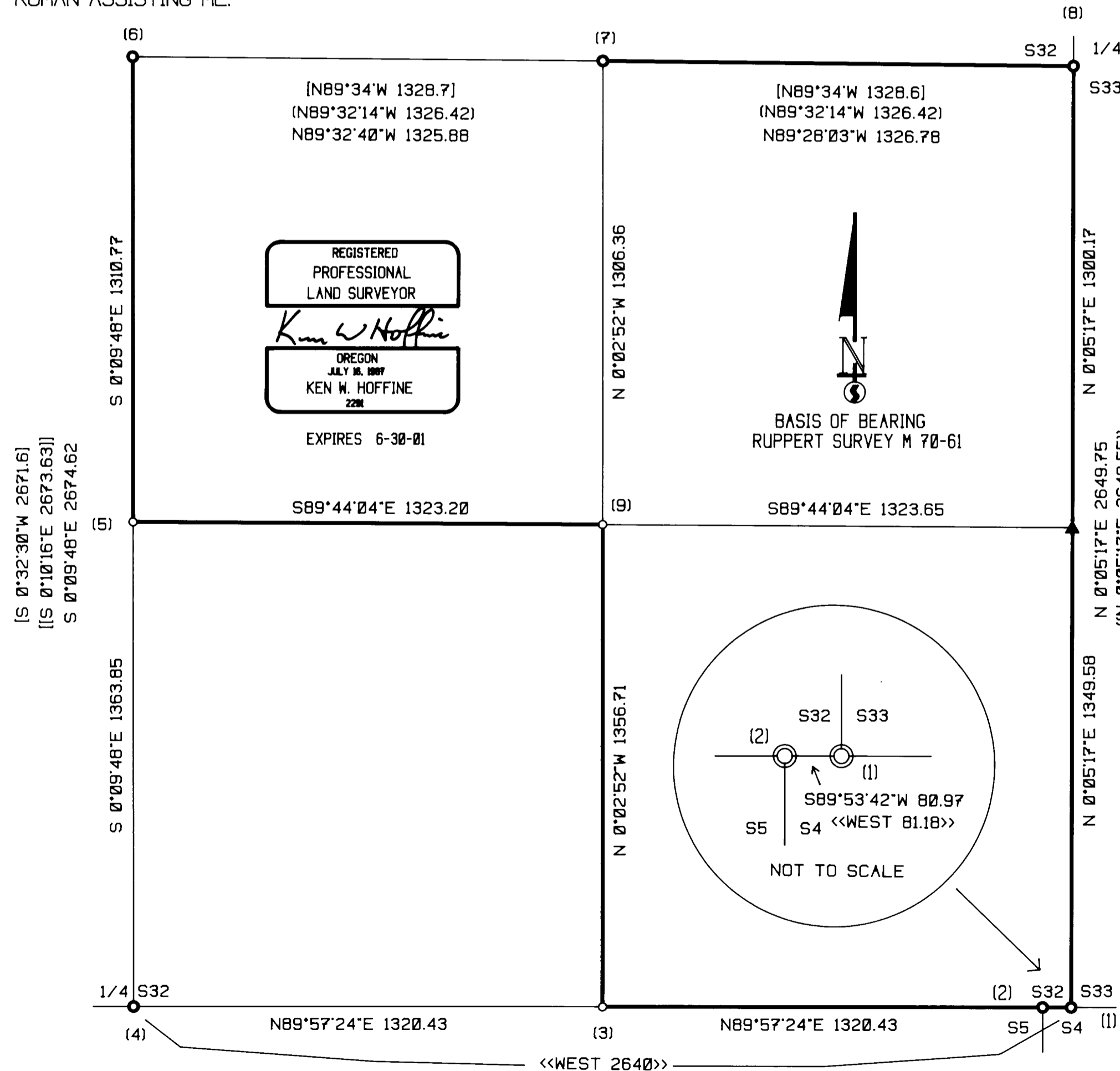
## LEGEND:

- ⊙ - FOUND MONUMENT
- - SET 5/8" BY 40" IRON ROD WITH ALUMINUM CAP
- ▲ - COMPUTED NOT SET
- - PROJECTED LINES
- - BLAZED AND PAINTED LINES
- ( ) - SMALLY 1995 SURVEY M121-77 FILED IN DOUGLAS COUNTY SURVEYORS OFFICE
- <> - GLO PLAT FEB. 20, 1858
- (( )) - RUPPERT 1979 SURVEY M70-61 FILED IN DOUGLAS COUNTY SURVEYORS OFFICE
- [ ] - EVANS 1951 SURVEY RM 1-30 FILED IN DOUGLAS COUNTY SURVEYORS OFFICE
- [[ ]] - SHANER 1995 SURVEY M119-64 FILED IN DOUGLAS COUNTY SURVEYORS OFFICE

DOUGLAS COUNTY SURVEYOR

## CORNER INFORMATION

- 1) SOUTHEAST CORNER OF SECTION 32  
 FOUND 5/8" IRON ROD 0.5 FEET ABOVE GROUND.  
 -- 22" DOUGLAS FIR BEARS N26 3/4"W, 34.6 FEET (RECORD N25° 57'W, 33.9 FEET) WELL HEALED FACE AND B.T. TAG  
 -- 13" DOUGLAS FIR BEARS N85 1/2"E, 71.8 FEET (RECORD N85°44'E, 71.8 FEET) WELL HEALED FACE  
 -- WITNESS CORNER BEARS N0°06'11"E, 85.09 FEET (RECORD N0°05'17"E, 85.0 FEET)  
 CORNER LIES APPROXIMATELY 90 FEET EAST OF RIDGETOP AND APPROXIMATELY 40 FEET WEST OF DRAW
- 2) CLOSING CORNER FOR SECTIONS 4 AND 5  
 FOUND COUNTY BRASS CAP ON SIDE OF 43" DOUGLAS FIR.  
 -- 11" DOUGLAS FIR BEARS S26°E, 20.1 FEET (RECORD S25°E, 20.1 FEET), WELL HEALED FACE AND B.T. TAG  
 -- 25" MADRONE BEARS S3°W, 19.3 FEET (RECORD S5 1/2"W, 18.7 FEET), WELL HEALED FACE AND B.T. TAG  
 CORNER LIES ON TOP OF SPUR RIDGE.
- 3) EAST 1/16 CORNER FOR SECTION 32 ONLY  
 SET 5/8" X 40" IRON ROD WITH ALUMINUM CAP MARKED LONE ROCK TIMBER T30S, R2W, E 1/16 S32 1999 PLS 2291.  
 -- 13" DOUGLAS FIR BEARS N77 1/4"E, 67.5 FEET, WE SCRIBE E 1/16 S32 B.T. AND TAG TREE  
 -- 28" DOUGLAS FIR BEARS N40 3/4"W, 10.7 FEET, WE SCRIBE E 1/16 S32 B.T. AND TAG TREE  
 CORNER LIES ON SOUTHWEST SLOPE APPROXIMATELY 30 FEET WEST OF BOTTOM OF SHALLOW DRAW AND APPROXIMATELY 140 FEET SOUTH OF RIDGETOP.
- 4) SOUTH 1/4 CORNER OF SECTION 32 ONLY  
 FOUND 1966 COUNTY BRASS CAP 0.8 FEET ABOVE GROUND.  
 -- 15" DOUGLAS FIR BEARS N39°W, 17.1 FEET (RECORD N37°W, 17.5 FEET), WELL HEALED FACE AND B.T. TAG  
 -- 20" MADRONE BEARS N64°E, 44.6 FEET (RECORD N65°E, 44.88 FEET) VISIBLE SCAR AND 2 B.T. TAGS  
 -- 18" CEDAR BEARS N71°E, 46.0 FEET (RECORD N70°E, 46.4 FEET), VISIBLE SCRIBING AND B.T. TAG  
 CORNER LIES ON MAIN RIDGETOP.
- 5) CENTERSOUTH 1/16 CORNER OF SECTION 32  
 SET 5/8" X 40" IRON ROD WITH ALUMINUM CAP MARKED LONE ROCK TIMBER CS 1/16 S32 1999 PLS 2291 0.5 FEET ABOVE GROUND.  
 -- 31" DOUGLAS FIR BEARS S36 1/2"E, 18.8 FEET WE SCRIBE CS 1/16 S32 B.T. AND TAG TREE  
 -- 10" DOUGLAS FIR BEARS N44 1/2"W, 40.8 FEET WE SCRIBE CS 1/16 S32 B.T. AND TAG TREE  
 CORNER LIES ON WEST FACING SLOPE.
- 6) CENTER 1/4 CORNER OF SECTION 32  
 FOUND 1995 ROSEBURG LUMBER CAP 0.6 FEET ABOVE GROUND.  
 -- 16" DOUGLAS FIR BEARS S83 1/2"W, 22.8 FEET (RECORD S82°W, 22.8 FEET) OPEN FACE AND B.T. TAG  
 -- 27" CEDAR BEARS S74 1/4"E, 5.3 FEET (RECORD S77°E, 5.2 FEET) VISIBLE SCRIBING AND B.T. TAG  
 -- 18" MADRONE BEARS N84 1/2"E 33.5 FEET (RECORD N88°E 33.5 FEET) VISIBLE SCRIBING AND B.T. TAG  
 -- 10" DOUGLAS FIR BEARS N22°E, 18.9 FEET (RECORD N24°E, 18.9 FEET) HEALED FACE AND B.T. TAG  
 CORNER LIES ON SOUTH FACING SLOPE APPROXIMATELY 50 FEET SOUTH OF SADDLE IN RIDGE.
- 7) CENTEREAST 1/16 CORNER OF SECTION 32  
 FOUND 1995 ROSEBURG LUMBER CAP 0.5 FEET ABOVE GROUND.  
 -- 8" DOUGLAS FIR BEARS N32 3/4"E, 17.5 FEET (RECORD N33°E, 17.4 FT.) OPEN FACE WITH VISIBLE SCRIBING AND B.T. TAG  
 -- 8" DOUGLAS FIR BEARS S57 1/2"E, 13.3 FEET (RECORD S54°E, 13.6 FT.) OPEN FACE, VISIBLE SCRIBING AND B.T. TAG  
 CORNER LIES ON EAST EDGE OF STEEP SKID ROAD CUT BANK.
- 8) 1/4 CORNER BETWEEN SECTIONS 32 AND 33  
 FOUND RUPPERT 1979 BRASS CAP AT GROUND LEVEL.  
 -- 48" DOUGLAS FIR BEARS S85°W, 35.3 FEET (RECORD S85°W, 35.4 FEET) WELL HEALED FACE AND B.T. TAG  
 -- 10" DOUGLAS FIR BEARS S37 1/2"W, 14.6 FEET (RECORD S36°W, 14.8 FEET) WELL HEALED FACE AND B.T. TAG  
 -- 28" DOUGLAS FIR BEAR S63 1/2"E, 7.7 FEET (RECORD S64°E, 8.0 FEET) HEALED FACE AND B.T. TAG  
 -- 7" DOUGLAS FIR BEARS N4 1/2"E, 27.0 FEET (RECORD N5°E, 26.9 FEET) HEALED FACE AND B.T. TAG  
 CORNER LIES ON STEEP EAST FACING SLOPE APPROXIMATELY 50 FEET EAST OF OLD SKID ROAD.
- 9) SOUTHEAST 1/16 CORNER OF SECTION 32  
 SET 5/8" X 40" IRON ROD WITH 2 1/2" ALUMINUM CAP MARKED LONE ROCK TIMBER SE 1/16 S32 PLS 2291.  
 -- 10" DOUGLAS FIR BEARS S11 1/4"W, 72.6 FEET, WE SCRIBE SE 1/16 S32 B.T. AND TAG TREE  
 -- 17" DOUGLAS FIR BEARS N72°E, 34.3 FEET, WE SCRIBE SE 1/16 S32 B.T. AND TAG TREE  
 CORNER SITS ON SOUTH EDGE OF OLD SKID ROAD



MAP FILE M133-1

MAP FILE M133-1