

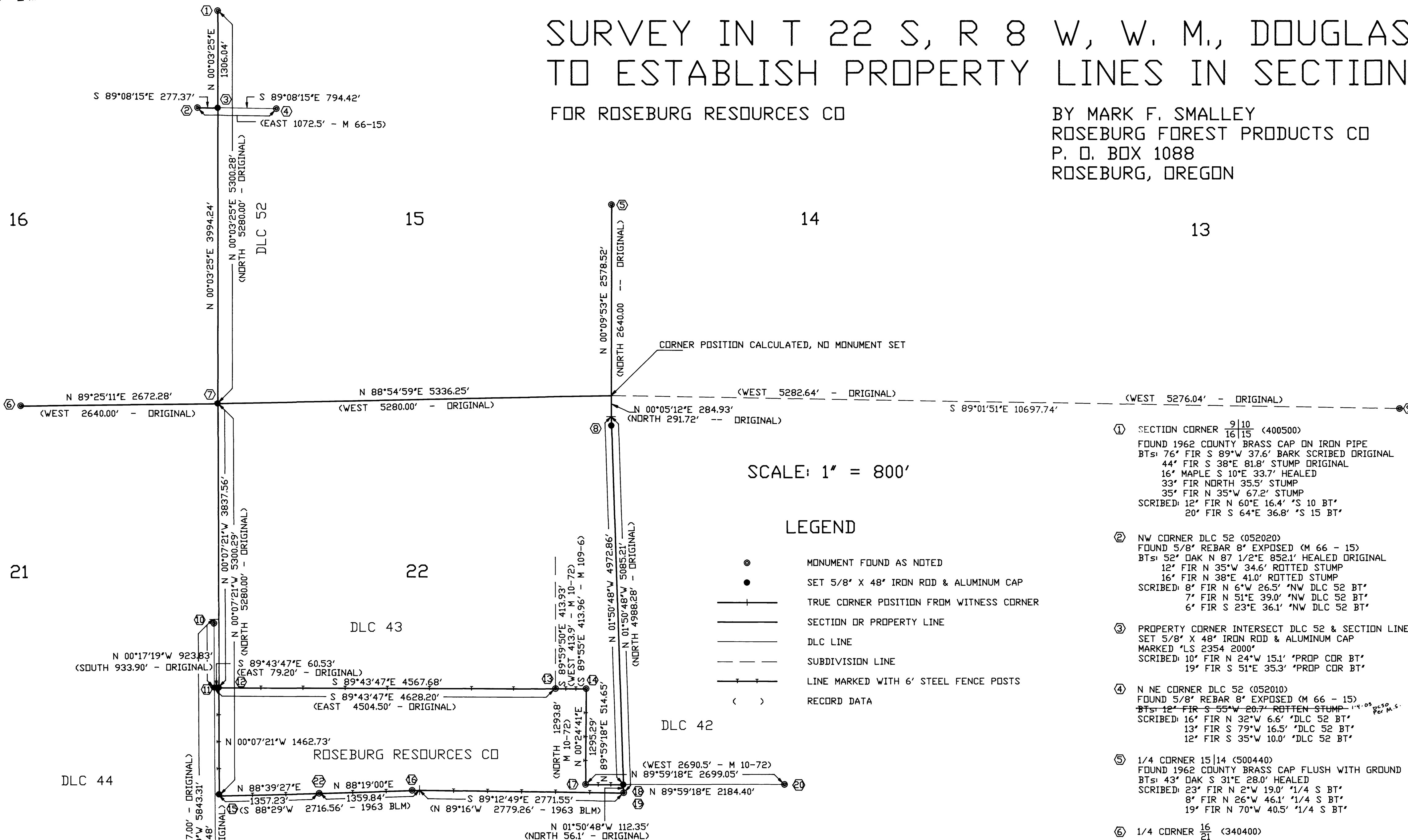
SURVEY IN T 22 S, R 8 W, W. M., DOUGLAS COUNTY, OREGON TO ESTABLISH PROPERTY LINES IN SECTIONS 16 AND 22

FOR ROSEBURG RESOURCES CO

BY MARK F. SMALLEY
ROSEBURG FOREST PRODUCTS CO
P. O. BOX 1088
ROSEBURG, OREGON

DECEMBER, 2000

FILED
Date: 12/14/2000 By: *SP*
This survey consists of:
Map: M132-59
Narrative:
Corner Rpt:
DOUGLAS COUNTY SURVEYOR



SCALE: 1" = 800'

LEGEND

- MONUMENT FOUND AS NOTED
- SET 5/8" X 48" IRON ROD & ALUMINUM CAP
- TRUE CORNER POSITION FROM WITNESS CORNER
- SECTION OR PROPERTY LINE
- DLC LINE
- - - SUBDIVISION LINE
- LINE MARKED WITH 6" STEEL FENCE POSTS
- () RECORD DATA

NARRATIVE

THE PURPOSE OF THIS SURVEY WAS TO MARK ROSEBURG RESOURCES PROPERTY LINES IN SECTION 22 TOWNSHIP 22 SOUTH, RANGE 8 WEST (RECORDER'S NO. 97-6315) AND TO SET THE SOUTHEAST PROPERTY CORNER OF ROSEBURG RESOURCES PROPERTY IN SECTION 16 (RECORDER'S NO. 97-26039).

THE NORTH LINES OF ROSEBURG RESOURCES PROPERTY IN SECTION 22 ARE THE NORTH LINES OF GOVERNMENT LOTS 4, 10, 11 AND 12. THE NORTH LINE OF THESE LOTS IS COINCIDENT WITH THE SOUTH LINE OF DLC 42 AND DLC 43. THE SOUTHWEST CORNER OF DLC 43 (043070) WAS RE-ESTABLISHED BY THIS SURVEY USING SINGLE PROPORTIONATE METHODS BETWEEN THE EAST SOUTHEAST CORNER OF DLC 44 (044130) AND THE NORTHEAST CORNER OF DLC 44 (043060) WHICH WERE PREVIOUSLY RENEWED BY THE COUNTY SURVEYOR. I DID NOT ACCEPT THE POSITION OF THE SOUTHWEST CORNER OF DLC 43 AS COMPUTED BY DOLAN IN HIS 1989 SURVEY (M 109-6) SINCE THE ORIGINAL SURVEYOR CALLS FOR THE CORNER ON THE EAST LINE OF DLC 44 AND DOLAN'S CORNER POSITION IS NOT ON THE EAST LINE. THE SOUTHEAST CORNER OF DLC 43 (042050) AS RENEWED BY THE COUNTY SURVEYOR (M 10-72) AND THE INTERIOR SOUTHWEST CORNER OF DLC 42 (042060) AS PROPORTIONED BY THE COUNTY SURVEYOR (M 10-72) WERE ALSO USED TO CONTROL THE NORTH LINE OF THIS SURVEY.

THE EAST LINES OF LOTS 12 AND 13 ARE CONTROLLED BY THE SOUTH SOUTHWEST CORNER OF DLC 42 (042070) AND THE INTERIOR SOUTHWEST CORNER OF DLC 42 (042060), BOTH AS PROPORTIONED BY THE COUNTY SURVEYOR (M 10-72) AND THE SOUTHEAST CORNER OF DLC 42 (041040) WHICH WAS RENEWED BY THE COUNTY SURVEYOR FROM ORIGINAL EVIDENCE. A PROPERTY CORNER WAS SET AT THE INTERSECTION OF THE SOUTH LINE OF DLC 42 (AS DETERMINED BY THE ABOVE MENTIONED CONTROL) AND THE EAST LINE OF SECTION 22 AS CONTROLLED BY THE SOUTHEAST SECTION CORNER OF SECTION 22 (500300) AS PROPORTIONED BY THE BLM IN 1963 AND THE MEANDER CORNER ON THE EAST LINE OF SECTION 22 (500376) AS RENEWED BY THE COUNTY SURVEYOR. THE NORTHEAST CORNER FOR SECTION 22 FALLS IN THE RIVER, BUT THE POSITION WAS CALCULATED BY DOUBLE PROPORTIONATE METHOD USING AS CONTROL THE SOUTH ONE-QUARTER CORNER OF SECTION 16 (340400) AS RENEWED FROM ORIGINAL EVIDENCE BY THE BLM, THE EAST ONE-QUARTER CORNER OF SECTION 15 (500440) AND THE MEANDER CORNER ON THE EAST LINE OF SECTION 22 (500376), BOTH AS RENEWED BY THE COUNTY SURVEYOR, AND THE NORTHEAST CORNER OF SECTION 24 (700400) AS PROPORTIONED BY THE BLM IN 1977.

THE SOUTH LINE OF SECTION 22 WAS CONTROLLED BY THE SOUTHEAST SECTION CORNER AS MENTIONED ABOVE, THE SOUTH ONE-QUARTER CORNER (440300) AND THE SOUTHWEST SECTION CORNER (400300) WHICH WERE BOTH RENEWED BY THE BLM FROM ORIGINAL EVIDENCE AND THE WEST ONE-SIXTEENTH CORNER AS SET BY THE BLM IN 1963.

DETERMINING THE WEST LINE OF SECTION 22 REQUIRED THAT THE NORTHWEST SECTION CORNER BE DOUBLE PROPORTIONED. THE CONTROL FOR THIS DOUBLE PROPORTION WAS THE SOUTHWEST CORNER OF SECTION 22 (400300), THE SOUTH ONE-QUARTER CORNER OF SECTION 16 (340400), BOTH AS RENEWED FROM ORIGINAL EVIDENCE BY THE BLM, THE NORTHEAST CORNER OF SECTION 16 (400500) AS RENEWED BY THE COUNTY SURVEYOR FROM ORIGINAL EVIDENCE AND THE NORTHEAST CORNER OF SECTION 24 (700400) AS PROPORTIONED BY THE BLM IN 1977.

A PROPERTY CORNER WAS COMPUTED AT THE INTERSECTION OF THE SOUTH LINE OF DLC 43 AND THE WEST LINE OF SECTION 22, WHICH FALLS IN THE COUNTY ROAD, A WITNESS CORNER WAS SET 50 FEET SOUTH. A PROPERTY CORNER WAS ALSO SET AT THE INTERSECTION OF THE EAST LINE OF SECTION 16 AND THE NORTH LINE OF DLC 52. THE NORTH LINE OF DLC 52 WAS CONTROLLED BY THE NORTH NORTHEAST CORNER OF DLC 52 (052010) AND THE NORTHWEST CORNER OF DLC 52 (052020) BOTH AS RENEWED BY HAINES IN 1977 (M 66-15).

THE BASIS OF BEARING FOR THIS SURVEY WAS A SOLAR OBSERVATION NEAR THE NORTHWEST CORNER OF SECTION 22. THE CONTROL FOR THIS SURVEY WAS TIED IN FEBRUARY AND MARCH, 2000 USING TRIMBLE 4600 LS GPS UNITS. LINES WERE MARKED AND CORNERS SET IN NOVEMBER, 2000 USING A TOPCON GTS-302 TOTAL STATION.

- ① SECTION CORNER $\frac{9110}{16115}$ (400500)
FOUND 1962 COUNTY BRASS CAP ON IRON PIPE
BTs: 76' FIR S 89°W 37.6' BARK SCRIBED ORIGINAL
44' FIR S 38°E 81.8' STUMP ORIGINAL
16' MAPLE S 10°E 33.7' HEALED
33' FIR NORTH 35.5' STUMP
35' FIR N 35°W 67.2' STUMP
SCRIBED: 12' FIR N 60°E 16.4' *S 10 BT*
20' FIR S 64°E 36.8' *S 15 BT*
- ② NW CORNER DLC 52 (052020)
FOUND 5/8" REBAR 8" EXPOSED (M 66 - 15)
BTs: 52' OAK N 87 1/2°E 852.1' HEALED ORIGINAL
12' FIR N 35°W 34.6' ROTTEN STUMP
16' FIR N 38°E 41.0' ROTTEN STUMP
SCRIBED: 8' FIR N 6°W 26.5' *NW DLC 52 BT*
7' FIR N 51°E 39.0' *NW DLC 52 BT*
6' FIR S 23°E 36.1' *NW DLC 52 BT*
- ③ PROPERTY CORNER INTERSECT DLC 52 & SECTION LINE
SET 5/8" X 48" IRON ROD & ALUMINUM CAP
MARKED *LS 2354 2000*
SCRIBED: 10' FIR N 24°W 15.1' *PROP CDR BT*
19' FIR S 51°E 35.3' *PROP CDR BT*
- ④ N NE CORNER DLC 52 (052010)
FOUND 5/8" REBAR 8" EXPOSED (M 66 - 15)
BTs: 12' FIR S 55°W 20.7' ROTTEN STUMP
SCRIBED: 16' FIR N 32°W 6.6' *DLC 52 BT*
13' FIR S 79°W 16.5' *DLC 52 BT*
12' FIR S 35°W 10.0' *DLC 52 BT*
- ⑤ 1/4 CORNER 1514 (500440)
FOUND 1962 COUNTY BRASS CAP FLUSH WITH GROUND
BTs: 43' OAK S 31°E 28.0' HEALED
SCRIBED: 23' FIR N 2°W 19.0' *1/4 S BT*
8' FIR N 26°W 46.1' *1/4 S BT*
19' FIR N 70°W 40.5' *1/4 S BT*
- ⑥ 1/4 CORNER $\frac{16}{340400}$ (340400)
FOUND 1963 BLM BRASS CAP ON IRON PIPE
BTs: 36' WHITE OAK N 84°E 253.4' DOWN ORIGINAL
12' FIR S 54 1/2°E 66.0' ROTTEN STUMP SCRIBE VISIBLE
31' FIR N 26 1/4°E 38.6' ROTTEN STUMP
SCRIBED: 14' FIR N 58°E 10.3' *1/4 S BT*
10' FIR N 8°W 45.2' *1/4 S BT*
9' FIR S 40°E 28.0' *1/4 S BT*
8' FIR S 18°E 41.6' *1/4 S BT*
- ⑦ SECTION CORNER $\frac{16115}{21122}$ (400500)
SET 5/8" X 48" IRON ROD & ALUMINUM CAP
MARKED *LS 2354 2000*
SCRIBED: 6' WHITE OAK N 22°W 55.2' *S 16 BT*
6' WHITE OAK N 62°W 22.9' *S 16 BT*
18' WHITE OAK N 21°E 110.0' *S 15 BT*
NO OTHER TREES WITHIN REASONABLE DISTANCE IN PATCH OF SCOTCH BROOM AND BLACKBERRIES
- ⑧ MEANDER CORNER 22123 (500376)
DIDNT FIND MONUMENT IN WASHED OUT BANK OF RIVER
BTs: 42' WHITE OAK S 18°E 104.3' (S 18' 10'E 103.2') HEALED
47' WHITE OAK S 67°W 167.0' (S 65 3/4'W 167.6') HEALED
28' WHITE OAK S 62°W 155.7' (S 55.1' W 7' TALL SNAG ORIGINAL
SET WITNESS CORNER 5/8" X 48" IRON ROD & ALUMINUM CAP MARKED *LS 2354 2000 WC 120' 120.00' SOUTH OF MEANDER CORNER LOCATION
SCRIBED: 10' CHERRY N 61°E 33.7' *WC MC BT*
42' WHITE OAK N 52°E 36.1' *WC MC BT*
42' WC BT IS ALSO BT FOR MEANDER CORNER NO OTHER GOOD TREES WITHIN REASONABLE DISTANCE
- ⑨ SECTION CORNER $\frac{13118}{24119}$ (700400)
FOUND 1977 BLM BRASS CAP ON IRON PIPE
BTs: 30' FIR N 12 1/2°W 51.2' HEALED
15' FIR S 21 3/4°E 29.7' HEALED
13' FIR S 44 1/4°W 38.0' HEALED
20' FIR N 64 1/2°E 45.7' (54.1') HEALED
- ⑩ NE DLC 44 / NW DLC 43 (043060)
FOUND 1987 COUNTY BRASS CAP ON IRON PIPE
WITNESS CORNER 55' SOUTH OF CORNER POINT
BTs: 46' WHITE OAK S 33 1/2°E 409.8' HEALED
22' WHITE OAK S 27 1/2°E 389.1' HEALED
12' ASH N 50°E 139.4' SCRIBE VISIBLE
- ⑪ SW CORNER DLC 43 (043070)
SET 5/8" X 48" IRON ROD & ALUMINUM CAP MARKED *LS 2354 2000 WC 50' 1' IN CUT SLOPE OF ROAD
SCRIBED: 6' ALDER S 4°W 8.2' *SW DLC 43 WC BT*
7' ALDER N 84°W 16.6' *WC SW DLC 43 BT*
6' FIR N 68°E 19.4' *WC SW DLC 43 BT*
PLASTIC CAP ON IRON ROD IN FENCE CORNER BEARS N 2°08'13"W 77.12' MARKED *LS 1076' (M 109-6)
- ⑫ INTERSECTION DLC 43 & SECTION LINE 21122
SET 5/8" X 48" IRON ROD & ALUMINUM CAP MARKED *LS 2354 2000 WC 50' 1' 50.00' SOUTH
SCRIBED: 10' FIR N 22 1/2°E 17.0' *WC RRC BT*
10' FIR S 57°W 10.4' *WC RRC BT*
- ⑬ SE CORNER DLC 43 / W SW CORNER DLC 42 (042050)
FOUND 1/2" IRON PIPE
BTs: 13' FIR N 85°W 12.5' HEALED
19' FIR N 65°W 27.5' HEALED
1/2" PIPE NORTH OF CORNER & 1 1/2" PIPE SOUTH OF CORNER
- ⑭ INTERIOR SW CORNER DLC 42 (042060)
FOUND 1/2" IRON PIPE (M 10 - 72)
BTs: 41' FIR N 54°W 76.5' HEALED
43' FIR N 5 1/2°E 76.8' HEALED
SCRIBED: 16' FIR S 66°E 43.7' *INT SW 42'
- ⑮ SECTION CORNER $\frac{21122}{28117}$ (400300)
FOUND 1963 BLM BRASS CAP ON IRON PIPE
IN HOLE WASHED OUT BY CREEK
BTs: 21' FIR N 84°E 70.0' HEALED
24' FIR S 58 1/2°E 95.0' HEALED
42' FIR S 24°W 66.0 HEALED
34' FIR N 22°W 273.9 STUMP 7' TALL
SET 5/8" X 48" IRON ROD & ALUMINUM CAP
2000' NORTH MARKED *LS 2354 2000 WC 20' 1'
SCRIBED: 24' FIR N 7°W 27.4' *S23 WC BT*
10' FIR N 46°W 58.2' *S23 WC BT*
NO OTHER TREES WITHIN REASONABLE DISTANCE
- ⑯ 1/4 CORNER $\frac{22}{440300}$ (440300)
FOUND 1963 BLM WITNESS CORNER BRASS CAP ON IRON PIPE
BTs: 25' (17') HEMLOCK S 65°W 5.7' HEALED
24' (17') HEMLOCK N 40°W 29.5' HEALED
SCRIBED: 12' HEMLOCK N 15°W 16.7' *WC BT*
7' HEMLOCK S 72°E 15.3' *WC BT*
- ⑰ S SW CORNER DLC 42 (042070)
FOUND 1/2" IRON PIPE (M 10-72)
BTs: 24' FIR STUMP N 10°W 70.4'
23' FIR S 73°E (N 87°E) 12.4' HEALED
13' FIR S 68°W 30.9' HEALED
PIPE WAS BURIED & BENT BY SLIDE STRAIGHTENED TO PLUMB 1 1/2" PIPE LAYING ALONG SIDE
- ⑱ INTERSECTION DLC 42 & SECTION LINE 22123
SET 5/8" X 48" IRON ROD & ALUMINUM CAP MARKED *LS 2354 2000* FOR PROPERTY CORNER
SCRIBED: 20' FIR S 84°W 25.1' *RRC BT*
20' FIR N 28°E 21.3' *RRC BT*
15' FIR S 48°E 21.1' *RRC BT*
ROD LEANS 0.2' WEST OVER BOLDER FOR TRUE LOCATION
- ⑲ SECTION CORNER $\frac{22123}{27126}$ (500300)
FOUND 1963 BLM BRASS CAP ON IRON PIPE
BTs: 13' FIR N 60 1/2°E 21.9' HEALED
10' FIR S 78°E 17.0' HEALED
12' FIR S 74°W 8.3' HEALED
8' FIR N 48°W 13.5' SNAG
SCRIBED: 16' FIR N 20°W 14.2' *S 22 BT*
- ⑳ SE CORNER DLC 42 / SW CORNER DLC 41 (041040)
FOUND 1963 BLM BRASS CAP ON IRON PIPE AND 1/2" IRON PIPE
BTs: 16' BLACK OAK N 35 1/2°E 13.2' HEALED
11' WHITE OAK N 67°W 79.9' HEALED
9' FIR S 26°W 13.8' 7' TALL STUMP
- ㉑ E SE CORNER DLC 44 (044130)
FOUND 1955 COUNTY BRASS CAP ON IRON PIPE
BTs: 27' WHITE OAK S 45°E 28.0' HEALED
31' WHITE OAK N 87 1/4°E 84.5' HEALED ORIGINAL
34' FIR N 57°E 64.7' (69.7') HEALED
25' WHITE OAK S 77 1/4°W 101.5' ROTTEN FACE
14' OAK STUMP WEST 88.0'
- ㉒ W 1/16 CORNER $\frac{22}{27}$ (400300)
FOUND 1963 BLM BRASS CAP ON IRON PIPE
BTs: 31' FIR N 21 3/4°E 31.0' HEALED
26' WHITE FIR S 29°E 31.7' HEALED

REGISTERED PROFESSIONAL LAND SURVEYOR

Mark F. Smalley
MARK F. SMALLEY
2004

RENEWS 6/30/2002