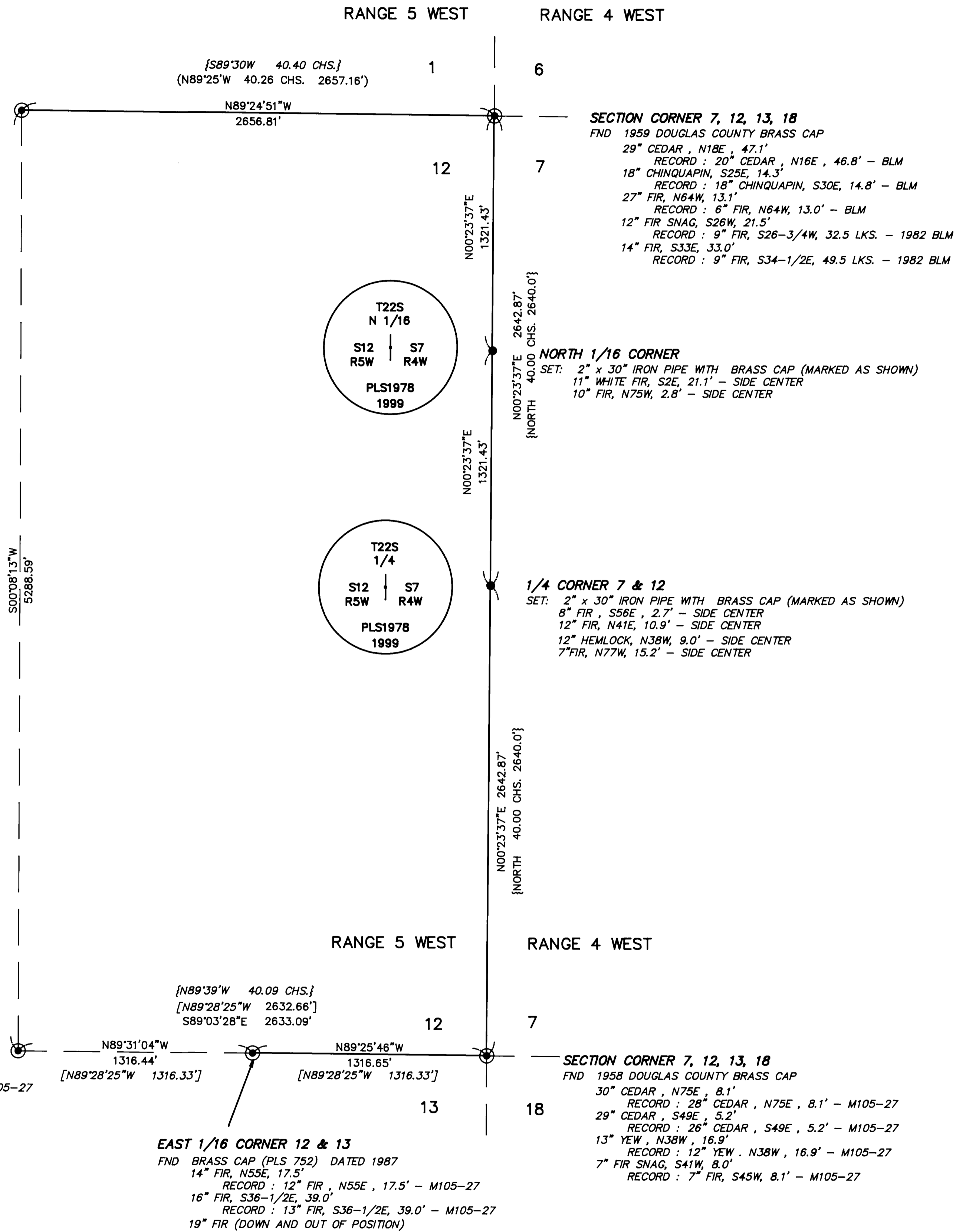
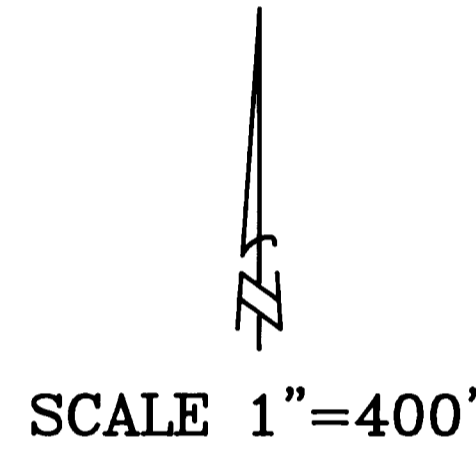


1/4 CORNER 1 & 12  
FND 1982 BLM BRASS CAP  
22" FIR, N30E, 22.5'  
RECORD: 16" FIR, N30-1/2E, 33-1/2 LKS - 1982 BLM  
17" FIR, S7E, 23.4'  
RECORD: 11" FIR, S5E, 35 LKS., - 1982 BLM



SECTION CORNER 7, 12, 13, 18  
FND 1959 DOUGLAS COUNTY BRASS CAP  
29" CEDAR, N18E, 47.1'  
RECORD: 20" CEDAR, N16E, 46.8' - BLM  
18" CHINUAPIIN, S25E, 14.3'  
RECORD: 18" CHINUAPIIN, S30E, 14.8' - BLM  
27" FIR, N64W, 13.1'  
RECORD: 6" FIR, N64W, 13.0' - BLM  
12" FIR SNAG, S26W, 21.5'  
RECORD: 9" FIR, S26-3/4W, 32.5 LKS. - 1982 BLM  
14" FIR, S33E, 33.0'  
RECORD: 9" FIR, S34-1/2E, 49.5 LKS. - 1982 BLM

NORTH 1/16 CORNER  
SET: 2" x 30" IRON PIPE WITH BRASS CAP (MARKED AS SHOWN)  
11" WHITE FIR, S2E, 21.1' - SIDE CENTER  
10" FIR, N75W, 2.8' - SIDE CENTER

1/4 CORNER 7 & 12  
SET: 2" x 30" IRON PIPE WITH BRASS CAP (MARKED AS SHOWN)  
8" FIR, S56E, 2.7' - SIDE CENTER  
12" FIR, N41E, 10.9' - SIDE CENTER  
12" HEMLOCK, N38W, 9.0' - SIDE CENTER  
7" FIR, N77W, 15.2' - SIDE CENTER

1/4 CORNER 12 & 13  
FND 1" ALUMINUM PIPE  
22" FIR, S44-3/4W, 39.1'  
RECORD: 19" FIR, S44-3/4W, 39.3' - M105-27  
30" FIR SNAG, N82-1/4E, 26.3'  
RECORD: 30" FIR SNAG, N82-1/4E, 26.3' - M105-27

EAST 1/16 CORNER 12 & 13  
FND BRASS CAP (PLS 752) DATED 1987  
14" FIR, N55E, 17.5'  
RECORD: 12" FIR, N55E, 17.5' - M105-27  
16" FIR, S36-1/2E, 39.0'  
RECORD: 13" FIR, S36-1/2E, 39.0' - M105-27  
19" FIR (DOWN AND OUT OF POSITION)

SECTION CORNER 7, 12, 13, 18  
FND 1958 DOUGLAS COUNTY BRASS CAP  
30" CEDAR, N75E, 8.1'  
RECORD: 28" CEDAR, N75E, 8.1' - M105-27  
29" CEDAR, S49E, 5.2'  
RECORD: 26" CEDAR, S49E, 5.2' - M105-27  
13" YEW, N38W, 16.9'  
RECORD: 12" YEW, N38W, 16.9' - M105-27  
7" FIR SNAG, S41W, 8.0'  
RECORD: 7" FIR, S45W, 8.1' - M105-27

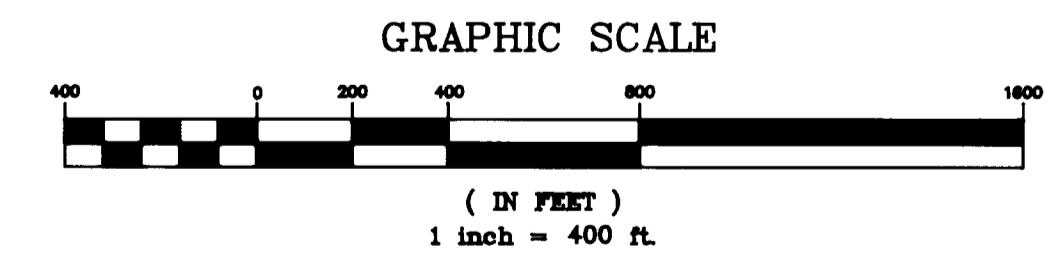
- NARRATIVE -

THIS SURVEY WAS MADE IN APRIL AND MAY, 1999 BY DANIEL W. BAKER OF BAKER AND ASSOCIATES SURVEYORS, INC. THE PURPOSE OF THIS SURVEY WAS TO LOCATE AND MARK IN THE FIELD A PORTION OF THE PROPERTY LINES OF ROCKING C RANCH L.L.C., IN SECTION 12, T22S, R5W, W.M. A TOPCON 211D TOTAL STATION WAS USED TO PERFORM THIS SURVEY, WITH A MINIMUM ERROR OF CLOSURE OF 1' IN 8,000 FEET. THE FOLLOWING CORNERS WERE USED FOR CONTROL; THE NORTHEAST SECTION CORNER, THE NORTH 1/4 CORNER, THE SOUTHEAST SECTION CORNER, THE EAST 1/16 CORNER ON THE SOUTH LINE, AND THE SOUTH 1/4 CORNER. THE EAST 1/4 CORNER OF SECTION 12 WAS SET AT MIDPOINT BETWEEN THE NORTHEAST AND SOUTHEAST SECTION CORNERS. THE NORTH 1/16 CORNER ON THE EAST LINE OF SECTION 12 WAS SET AT MIDPOINT BETWEEN THE NORTHEAST SECTION CORNER AND THE SET EAST 1/4 CORNER. THE MONUMENTS SET AT THESE CORNER LOCATIONS WERE MARKED PER "BLM MANUAL OF INSTRUCTIONS - 1973" AND ALSO MARKED "PLS 1978". ALL PROPERTY LINES WERE BLAZED AND PAINTED (BLAZES PAINTED RED) AND 6 FOOT STEEL FENCE POSTS WERE SET AT RANDOM INTERVALS ALONG THE TRUE PROPERTY LINES.

BASIS OF BEARING: EAST 1/2 SOUTH LINE  
SECTION 12, AS PER M105-27

LEGEND

- ⊙ - CORNERS FOUND (AS NOTED)
- - CORNERS SET (AS NOTED)
- - CALCULATED POINT (NOT SET)
- - PROPERTY LINE
- { } - RECORD DATA - 1855 GLO
- [ ] - RECORD DATA - M105-27
- ( ) - RECORD DATA - BLM 1982



REGISTERED PROFESSIONAL LAND SURVEYOR  
OREGON  
DANIEL W. BAKER  
1978  
EXPIRES 12/31/99

SURVEY IN EAST 1/2 OF SECTION 12, T22S, R5W, W.M. DOUGLAS COUNTY, OREGON	
CLIENT:	ROCKING "C" RANCH
DRAWN BY:	KRC
DATE:	6-9-99
FILE:	ROCKINGC
BAKER AND ASSOCIATES, SURVEYORS 1385 OAK STREET - SUITE 3 EUGENE, OREGON 97401 (541) 343-7243	