

FILED
 Date: 10-12-1999 By: JP
 This survey consists of:
 Map: M132-16
 Narrative:
 Corner Rpt:
 DOUGLAS COUNTY SURVEYOR

SECTION CORNER 7, 12, 13, 18
 FND 1958 DOUGLAS COUNTY BRASS CAP
 30" CEDAR, N75E, 8.1'
 RECORD: 28" CEDAR, N75E, 8.1' - M105-27
 29" CEDAR, S49E, 5.2'
 RECORD: 26" CEDAR, S49E, 5.2' - M105-27
 13" YEW, N38W, 16.9'
 RECORD: 12" YEW, N38W, 16.9' - M105-27
 7" FIR SNAG, S41W, 8.0'
 RECORD: 7" FIR, S45W, 8.1' - M105-27

WEST 1/16 CORNER 7 & 18
 SET: 2" x 30" IRON PIPE W/2-1/2" BRASS CAP (MARKED AS SHOWN)
 4" FIR, N39W, 3.7' - SIDE CENTER
 3" FIR, S80E, 6.8' - SIDE CENTER
 6' FENCEPOST 1' SOUTH

1/4 CORNER 7 & 18
 SET: 30" IRON PIPE W/2-1/2" BRASS CAP (AS SHOWN)
 16" FIR STUMP, N12E, 26.2'
 15" FIR STUMP, N78W, 26.7'
 23" FIR, S79W, 108.6'
 20" FIR, E, 60.0'
 SET 6" STEEL FENCEPOST ALONGSIDE

SECTION CORNER 7, 8, 17, 18
 FND 1956 DCSO BRASS CAP
 22" CEDAR STUMP, S15E, 84.1'
 RECORD: 14" CEDAR, S18E, 84.5' - DCSO 1956
 12" FIR STUMP, N45E, 9.4' (ROTTED)
 RECORD: 12" RED FIR, N46E, 9.4' - DCSO 1956
 15" FIR, N21W, 28.2'
 RECORD: 6" FIR, N31W, 28.8' - DCSO 1965
 21" CEDAR, N65E, 57.6'
 RECORD: 14" CEDAR, N66E, 58.0' - DCSO 1965
 SET 16" FIR, S18W, 40.1'

NARRATIVE

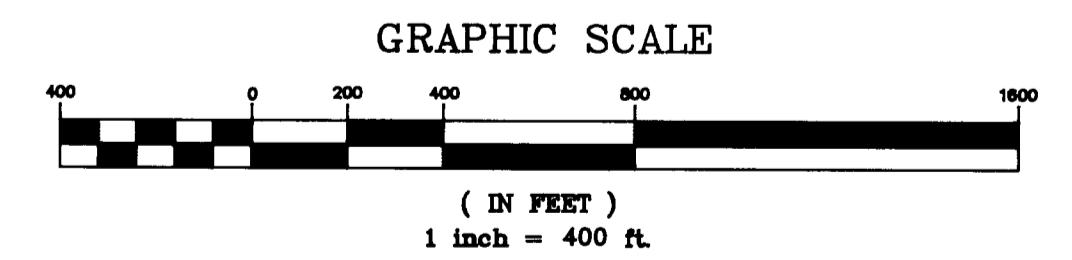
THIS SURVEY WAS MADE IN JULY AND AUGUST, 1999 BY DANIEL W. BAKER OF BAKER AND ASSOCIATES SURVEYORS, INC.. THE PURPOSE OF THIS SURVEY WAS TO LOCATE AND MARK IN THE FIELD A PORTION OF THE PROPERTY LINES OF ROCKING C RANCH L.L.C., IN SECTION 18, T22S, R4W, W.M.. A TOPCON 211D TOTAL STATION WAS USED TO PERFORM THIS SURVEY, WITH A MINIMUM ERROR OF CLOSURE OF 1" IN 8,000 FEET. THE FOLLOWING CORNERS WERE USED FOR CONTROL: THE NORTHEAST SECTION CORNER, THE NORTHWEST SECTION CORNER, THE WEST 1/4 CORNER, THE SOUTHWEST SECTION CORNER, THE SOUTHEAST SECTION CORNER, AND THE EAST 1/4 CORNER. THE NORTH AND SOUTH 1/4 CORNERS WERE SET AT PROPORTIONATE DISTANCES BETWEEN THEIR RESPECTIVE SECTION CORNERS PER ORIGINAL GLO NOTES. THE WEST 1/16 CORNER WAS PROPORTIONED BETWEEN THE SET NORTH 1/4 CORNER AND THE NORTHWEST SECTION CORNER PER ORIGINAL GLO NOTES. THE NORTHWEST 1/16 CORNER WAS SET AT THE INTERSECTION OF A LINE RUNNING FROM THE SET WEST 1/16 CORNER ON THE NORTH LINE AND THE CALCULATED POSITION OF THE CENTER WEST 1/16 CORNER AND A LINE RUNNING FROM THE SET NORTH 1/16 CORNER ON THE WEST SECTION LINE AND THE CALCULATED POSITION OF THE CENTER NORTH 1/16 CORNER. THE NORTH 1/16 CORNER ON THE WEST LINE OF SECTION 18 WAS SET AT MIDPOINT BETWEEN THE NORTHWEST SECTION CORNER AND THE WEST 1/4 CORNERS OF SECTION 18. MONUMENTS SET AT THESE CORNER LOCATIONS WERE MARKED PER "BLM MANUAL OF INSTRUCTIONS - 1973" AND ALSO MARKED "PLS 1978". ALL PROPERTY LINES WERE BLAZED AND PAINTED (BLAZES PAINTED RED) AND 6 FOOT STEEL FENCE POSTS WERE SET AT RANDOM INTERVALS ALONG THE TRUE PROPERTY LINES.

SCALE 1"=400'

BASIS OF BEARING: WEST LINE
 SECTION 18 PER M105-27

LEGEND

- - CORNERS FOUND (AS NOTED)
- - CORNERS SET (AS NOTED)
- - CALCULATED POINT (NOT SET)
- - PROPERTY LINE
- [] - RECORD DATA - 1855 GLO
- () - RECORD DATA - M70-76
- (()) - RECORD DATA - M105-27

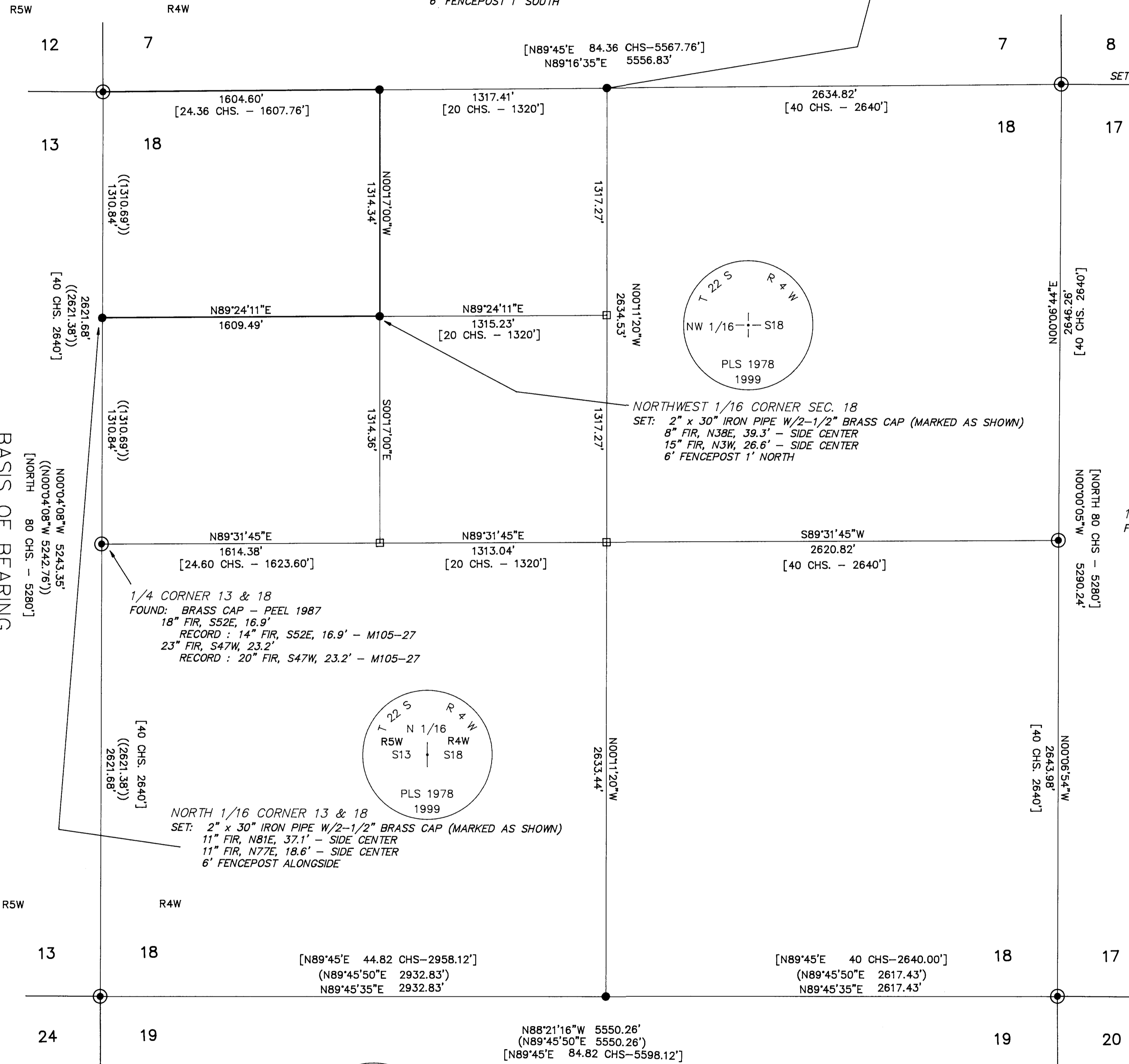


SURVEY IN
 SECTION 18, T22S, R4W, W.M.
 DOUGLAS COUNTY, OREGON

CLIENT: ROCKING "C" RANCH

DRAWN BY: KRC BAKER AND ASSOCIATES, SURVEYORS
 DATE: 9-9-99 1385 OAK STREET - SUITE 3
 FILE: ROCKINGC EUGENE, OREGON 97401 (541) 343-7243

REGISTERED PROFESSIONAL LAND SURVEYOR
 DANIEL W. BAKER
 JULY 18, 1982
 EXPIRES 12/31/99



BASIS OF BEARING

SECTION CORNER 13, 18, 19, 24
 FND 1958 DOUGLAS COUNTY BRASS CAP
 23" W.FIR, S30E, 25.5'
 RECORD: 11" W.FIR, S36E, 25.8' - DCSO 1958
 13" W. FIR, S42W, 18.9'
 RECORD: 7" W.FIR, S36W, 18.9' - DCSO 1958
 26" FIR, N65W, 80.1'
 RECORD: 12" FIR, N71W, 80.8' - DCSO 1958

1/4 CORNER 18 & 19
 SET: 30" IRON PIPE W/2-1/2" BRASS CAP (AS SHOWN)
 NO AVAILABLE TREES FOR REFERENCE
 SET 6" STEEL FENCEPOST ALONGSIDE

SECTION CORNER 17, 18, 19, 20
 FND 1963 BLM BRASS CAP
 30" FIR, N56E, 83.8'
 RECORD: 27" FIR, N57E, 127 LKS(83.8') - BLM 1963
 26" OAK, S56E, 16.8'
 RECORD: 15" OAK, S57-1/2E, 27.5 LKS(18.1') - BLM 1963
 SET 6' FENCEPOST N30W, 4'