

FILED  
Date: 8-17-1999  
This survey consists of:  
Map: M132-12  
Narrative:  
Corner Plat:  
DOUGLAS COUNTY SURVEYOR

SECTION CORNER 28, 29, 32, 33

FOUND: DOUGLAS COUNTY BRASS CAP DATED 1964, 0.6 FT. ABOVE GROUND  
ROTTEN REMAINS, N 67 E, 68 FT. - EVIDENCE OF FACE  
RECORD: N 67 E, 103 LKS. - 1901 BRIGGS  
REMAINS OF SNAG, S 71 E, 128 FT.  
RECORD: S 71 E, 194 LKS. - 1901 BRIGGS  
36" ROTTEN FIR STUMP, S 7-1/2 W, 16.4 FT. TO CENTER - "W" SCRIBE VISIBLE  
RECORD: S 7-1/2 W, 23 LKS. - 1901 BRIGGS  
30" ROTTEN STUMP, N 45-1/2 W, 36 FT.  
RECORD: N 45-1/2 W, 55 LKS. - 1901 BRIGGS

12" FIR SNAG, N 87 E, 34.0 FT. TO SPIKE SET SIDE CENTER - VISIBLE SCRIBE  
RECORD: N 85 E, 33.7 FT. - 1964 DOUGLAS CO.  
18" FIR STUMP - 3 FT. HIGH, S 53 E, 24.0 FT. TO SPIKE SET SIDE CENTER - CLOSED FACE  
RECORD: S 55 E, 23.5 FT. - 1964 DOUGLAS CO.  
11" ROTTEN FIR STUMP, N 10-1/2 W, 116.9 FT. TO CENTER - EVIDENCE OF CLOSED FACE  
RECORD: N 7-1/2 W, 115.0 FT. - 1964 DOUGLAS CO.

SET: 8" FIR, S 42-1/2 W, 32.6 FT. TO SPIKE SET SIDE CENTER  
SCRIBED "S32 BT"  
16" FIR, N 89 W, 35.8 FT. TO SPIKE SET SIDE CENTER  
SCRIBED "S29 BT"

NOTE: CORNER LIES IN NORTHEAST/EAST FENCE LINE AND IN EASTERLY CUTBANK OF DIRT ROAD

1/4 CORNER SEC. 32 & 33

FOUND: DOUGLAS COUNTY BRASS CAP DATED 1964, 1.2 FT. ABOVE GROUND  
CAP IS ROTATED 180 DEGREES.  
38" FIR, N 54 E, 7.8 FT. TO SPIKE SET SIDE CENTER - CLOSED FACE  
RECORD: N 48 E, 10 LKS. - 1901 BRIGGS  
ROTTEN FIR STUMP, S 31 W, 9.3 FT. TO CENTER  
RECORD: S 33 E, 9 LKS. - 1901 BRIGGS  
14" CEDAR, N 75 E, 15.9 FT. TO SPIKE SET SIDE CENTER - CLOSED FACE  
RECORD: N 73 E, 15.3 FT. - 1964 DOUGLAS CO.  
18" FIR STUMP, S 77 W, 38.8 FT. TO SPIKE SET SIDE CENTER - CLOSED FACE  
RECORD: S 78 W, 39.0 FT. - 1964 DOUGLAS CO.

SET: 12" FIR, S 42 E, 27.9 FT. TO SPIKE SET SIDE CENTER  
SCRIBED "1/4 S33 BT"  
6" FIR, N 54-1/2 W, 22.2 FT. TO NAIL SET SIDE CENTER  
SCRIBED "X BT"

NOTE: CORNER LIES 1.5 FT. SOUTHWEST OF NORTH/EAST/WEST FENCE CORNER

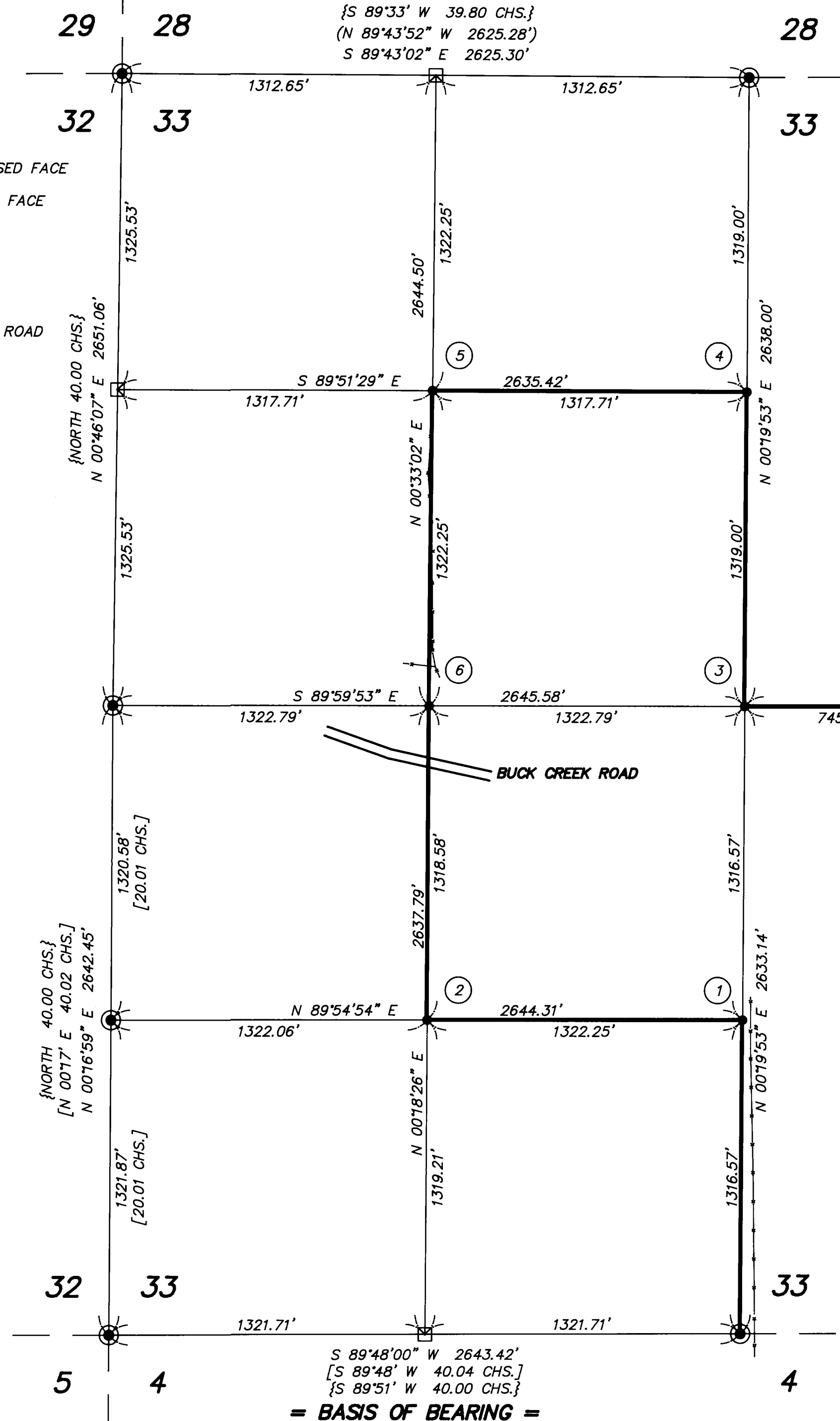
SOUTH 1/16 CORNER SEC. 32 & 33

FOUND: U.S.B.L.M. BRASS CAP DATED 1980, 0.5 FT. ABOVE GROUND  
12" FIR, S 37-1/2 E, 16.3 FT. TO NAIL SET SIDE CENTER - CLOSED FACE  
RECORD: S 38-1/2 E, 25 LKS. - 1980 BLM  
17" FIR, S 50 W, 43.3 FT. TO NAIL SET SIDE CENTER - CLOSED FACE  
RECORD: S 48 W, 65-1/2 LKS. - 1980 BLM

SECTION CORNER 4, 5, 32, 33

FOUND: DOUGLAS COUNTY BRASS CAP DATED 1964, 0.8 FT. ABOVE GROUND  
13" FIR, N 2-1/2 E, 89.6 FT. TO NAIL SET SIDE CENTER - CLOSED FACE  
RECORD: N 2 E, 89.6 FT. - 1964 DOUGLAS CO.  
28" HEMLOCK, S 74 W, 24.4 FT. TO NAIL SET SIDE CENTER - CLOSED FACE  
RECORD: S 72-1/2 W, 24.8 FT. - 1964 DOUGLAS CO.  
28" FIR, N 23-1/2 W, 12.1 FT. TO NAIL SET SIDE CENTER - CLOSED FACE  
RECORD: N 25 W, 12.0 FT. - 1964 DOUGLAS CO.  
11" FIR, S 34-1/2 E, 32.4 FT. TO NAIL SET SIDE CENTER - CLOSED FACE  
RECORD: S 35-1/2 E, 39 LKS. - 1980 BLM

NOTE: DOWNED FENCE RUNS WEST



1/4 CORNER SEC. 28 & 33

FOUND: 5/8" IRON ROD PER M82-14 & M84-75, 0.1 FT. ABOVE GROUND  
28" FIR, N 71 E, 20.4 FT. TO NAIL SET SIDE CENTER - CLOSED FACE  
RECORD: N 71 E, 70.7 FT. - 1979 M82-14  
24" FIR, S 44 W, 7.7 FT. TO NAIL SET SIDE CENTER - CLOSED FACE  
RECORD: S 44 W, 7.9 FT. - 1979 M82-14

NOTE: CORNER LIES 7 FT. EAST OF NORTH/SOUTH FENCE

BASIS OF BEARING: WEST 1/2 OF SOUTH LINE SECTION 33, T21S, R4W, W.M. PER 1980 U.S.B.L.M.

LEGEND

- - CORNERS FOUND - AS NOTED
- - CORNERS SET - AS NOTED
- - CALCULATED POINT (NOT SET)
- - PROPERTY LINE BLAZED AND PAINTED RED
- - EXISTING REMAINS OF BARBED WIRE FENCE
- { } - RECORD DATA - 1855 GLO
- ( ) - RECORD DATA - M84-14
- [ ] - RECORD DATA - 1980 U.S.B.L.M.

1/4 CORNER SEC. 33 & 34

FOUND: 2-1/2" BRASS CAP DATED 1988 PER M106-48, 0.4 FT. ABOVE GROUND  
10" FIR STUMP, N 57 E, 7.8 FT. TO "W" NAIL - SCRIBE VISIBLE  
RECORD: N 57 E, 7.8 FT. TO "W" NAIL - 1988 M106-48  
16" FIR, N 0-1/2 W, 16.0 FT. TO NAIL FOUND SIDE CENTER - CLOSED FACE  
RECORD: N 0-1/2 W, 15.5 FT. TO "W" NAIL - 1988 M106-48  
30" ROTTEN CEDAR STUMP, S 22-1/4 E, 26.1 FT. TO CENTER - VISIBLE SCRIBE  
RECORD: UNKNOWN  
SET: 18" CEDAR, S 81-1/2 W, 26.3 FT. TO SPIKE SET SIDE CENTER  
SCRIBED "1/4 S33 BT"  
15" FIR STUMP, S 47 E, 24.4 FT. TO SPIKE SET SIDE CENTER  
SCRIBED "BT"

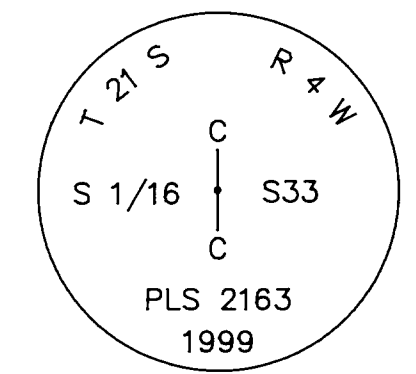
1/4 CORNER SEC. 33 & 4

FOUND: U.S.B.L.M. BRASS CAP DATED 1980, 0.1 FT. ABOVE GROUND  
12" FIR, N 43 W, 31.6 FT. TO SPIKE SET SIDE CENTER - CLOSED FACE  
RECORD: N 45-1/2 W, 46 LKS. - 1980 BLM  
16" FIR, S 54 W, 30.8 FT. TO SPIKE SET SIDE CENTER - CLOSED FACE  
RECORD: S 51-1/2 W, 74 LKS. - 1980 BLM  
SET: 20" FIR, N 89-1/2 E, 13.7 FT. TO SPIKE SET SIDE CENTER  
SCRIBED "T21S 1/4 S33 BT"  
28" FIR, S 6-1/2 E, 14.8 FT. TO SPIKE SET SIDE CENTER  
SCRIBED "T22S 1/4 S4 BT"

SCALE 1"=400'

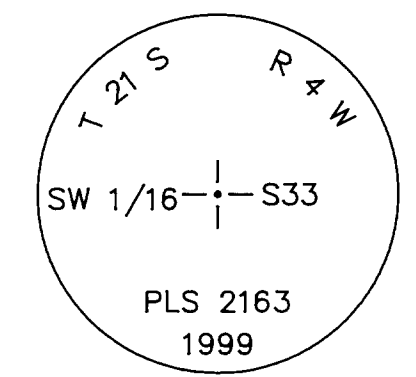
1 CENTER SOUTH 1/16 CORNER

SET: 2-1/2" O.D. X 36" IRON PIPE WITH 2-1/2" BRASS  
CAP 0.5 FT. ABOVE GROUND  
24" FIR, N 23 E, 17.7 FT. TO SPIKE SET SIDE CENTER  
SCRIBED "CS 1/16 S33 BT"  
26" HEMLOCK, N 75 W, 22.8 FT. TO SPIKE SET SIDE CENTER  
SCRIBED "CS 1/16 S33 BT"



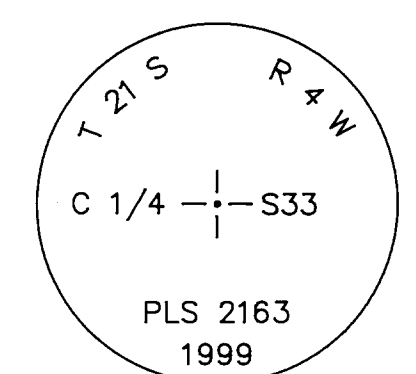
2 SOUTHWEST 1/16 CORNER

SET: 2-1/2" O.D. X 36" IRON PIPE WITH 2-1/2" BRASS  
CAP 0.5 FT. ABOVE GROUND  
24" FIR, N 64-1/2 E, 47.6 FT. TO SPIKE SET SIDE CENTER  
SCRIBED "SW 1/16 S33 BT"  
24" FIR, S 2 E, 21.3 FT. TO SPIKE SET SIDE CENTER  
SCRIBED "SW 1/16 S33 BT"



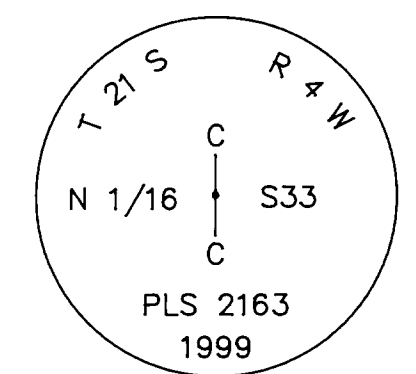
3 CENTER 1/4 CORNER

SET: 2-1/2" O.D. X 36" IRON PIPE WITH 2-1/2" BRASS  
CAP 0.7 FT. ABOVE GROUND  
12" FIR, N 55-3/4 E, 37.9 FT. TO SPIKE SET SIDE CENTER  
SCRIBED "C 1/4 S33 BT"  
10" FIR, S 42-1/2 E, 18.0 FT. TO SPIKE SET SIDE CENTER  
SCRIBED "C 1/4 S33 BT"  
12" FIR, S 69 W, 16.3 FT. TO SPIKE SET SIDE CENTER  
SCRIBED "C 1/4 S33 BT"  
12" FIR, N 23 W, 21.4 FT. TO SPIKE SET SIDE CENTER  
SCRIBED "C 1/4 S33 BT"



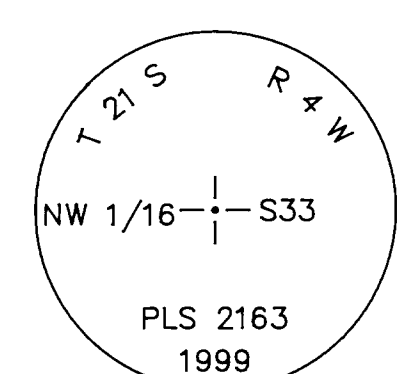
4 CENTER NORTH 1/16 CORNER

SET: 2-1/2" O.D. X 36" IRON PIPE WITH 2-1/2" BRASS  
CAP 0.8 FT. ABOVE GROUND  
7" FIR, N 45-1/2 E, 10.0 FT. TO SPIKE SET SIDE CENTER  
SCRIBED "X BT"  
9" FIR, N 83 W, 6.3 FT. TO SPIKE SET SIDE CENTER  
SCRIBED "CN 1/16 S33 BT"



5 NORTHWEST 1/16 CORNER

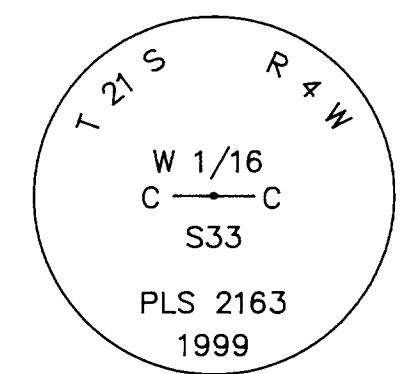
SET: 2-1/2" O.D. X 36" IRON PIPE WITH 2-1/2" BRASS  
CAP 0.6 FT. ABOVE GROUND  
18" FIR, S 32-1/2 E, 12.7 FT. TO SPIKE SET SIDE CENTER  
SCRIBED "NW 1/16 S33 BT"  
12" FIR, S 43 W, 12.9 FT. TO SPIKE SET SIDE CENTER  
SCRIBED "NW 1/16 S33 BT"



NOTE: 1" IRON PIPE LEANING TO THE WEST 0.8 FT. ABOVE GROUND UNKNOWN ORIGIN - BEARS N 5 E, 28.9 FT.

6 CENTER WEST 1/16 CORNER

SET: 2-1/2" O.D. X 36" IRON PIPE WITH 2-1/2" BRASS  
CAP 0.8 FT. ABOVE GROUND  
28" FIR, N 79 E, 40.6 FT. TO SPIKE SET SIDE CENTER  
SCRIBED "CW 1/16 S33 BT"  
28" FIR, N 29-1/2 W, 28.0 FT. TO SPIKE SET SIDE CENTER  
SCRIBED "CW 1/16 S33 BT"



NARRATIVE

THIS SURVEY WAS MADE IN JUNE AND JULY, 1999 BY DAVID H. WELLMAN OF D. WELLMAN SURVEYING, 570 LAWRENCE STREET #116, EUGENE, OR, 97401. THE PURPOSE OF THE SURVEY WAS TO MONUMENT THE PROPERTY CORNERS AND TO LOCATE AND MARK THE PROPERTY LINES OF THE LAND OWNED BY SUMMERWOOD INC. IN PORTIONS OF SECTION 33, T21S, R4W, W.M. A WILD T1000 WITH D11600 WAS USED TO PERFORM CLOSED MULTIPLE RANDOM LOOPS BETWEEN FOUND CORNERS FOR CONTROL, AND ALONG THE RANDOM LINE. OFFSETS FROM THE RANDOM LINE WERE MADE TO DETERMINE TRUE LINE. CLOSURES WERE ALL BETTER THAN 1:7400 BEFORE LEAST SQUARES ADJUSTMENT OF THE NETWORK. BEARINGS ARE BASED ON THE 1980 BLM SURVEY OF THE WEST HALF OF THE SOUTH LINE OF SECTION 33.

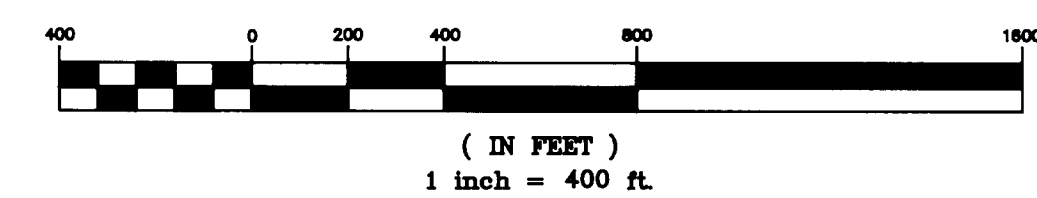
THE CENTER 1/4 CORNER WAS SET AT THE INTERSECTION OF THE NORTH/SOUTH AND EAST/WEST CENTERLINES OF THE SECTION. THE CENTER-NORTH 1/16 CORNER WAS SET AT MIDPOINT BETWEEN THE CENTER 1/4 CORNER AND THE NORTH 1/4 CORNER. THE CENTER-WEST 1/16 WAS SET AT THE MIDPOINT BETWEEN THE CENTER 1/4 CORNER AND THE WEST 1/4 CORNER. THE CENTER-SOUTH 1/16 CORNER WAS SET AT MIDPOINT BETWEEN THE CENTER 1/4 CORNER AND THE SOUTH 1/4 CORNER. THE NORTHWEST 1/16 CORNER WAS SET AT THE INTERSECTION OF THE NORTH/SOUTH AND EAST/WEST CENTERLINES OF THE NORTHWEST 1/4 OF SECTION 33 USING CALCULATED MIDPOINT POSITIONS FOR THE WEST 1/16 ON THE NORTH LINE AND THE NORTH 1/16 ON THE WEST LINE. THE SOUTHWEST 1/16 WAS SET AT THE INTERSECTION OF THE NORTH/SOUTH AND EAST/WEST CENTERLINES OF THE SOUTHWEST 1/4 OF SECTION 33 USING A CALCULATED MIDPOINT POSITION FOR THE WEST 1/16 ON THE SOUTH LINE OF SECTION 33.

ALL CORNERS ARE MONUMENTED AS NOTED ON THE PLAT PER "1973 BLM MANUAL OF INSTRUCTION". PROPERTY LINES WERE MARKED BY RED PAINT ON BLAZED TREES ON BOTH SIDES OF TRUE LINE. FOR ALL BEARING TREES, ESTABLISHED OR TIED, DISTANCE WAS MEASURED, AS NOTED, FROM THE CORNER TO A 6" SPIKE OR ALUMINUM NAIL SET AT SIDE CENTER OF THE TREE NEAR THE BASE. ALL BEARINGS WERE MAGNETIC, DECLINATION 20'; MEASURED WITH A 6 INCH WARREN-KNIGHT STAFF COMPASS.

REFERENCE SURVEYS

- 1855 GLO
- 1980 U.S.B.L.M.
- M12-8
- M82-14
- M84-75
- M86-56
- M106-48
- M124-4

GRAPHIC SCALE



REGISTERED PROFESSIONAL LAND SURVEYOR  
DAVID H. WELLMAN  
2163  
RENEWAL 6/30/00

SURVEY IN  
NW 1/4 & SW 1/4 OF SECTION 33, T21S, R4W, W.M.  
DOUGLAS COUNTY, OREGON  
CLIENT: SUMMERWOOD INC.  
D. WELLMAN SURVEYING  
570 LAWRENCE STREET #116  
EUGENE, OR 97401 (541) 684-1448