

BOUNDARY LINE SURVEY LOCATED IN SECTIONS 30, T.20 S., R.11 W., W.M., DOUGLAS CO., OR.

GEOGRAPHIC COORDINATES WGS - 84 DATUM INTERNATIONAL FEET OREGON SOUTH ZONE AVE. ELEV. - 200 FT. SCALE FACTOR - .9999741

CORNER NOTES

N - 801780.234 E - 3980376.500

CORNER #1: FD. A 3" BRASS CAP AT THE SECTION CORNER OF SECTIONS 24 AND 25, T.20S., R.12W., W.M., ONLY. FD. A 60" X 8" HIGH SPRUCE STUMP S38°E, 40.8 FT.; FD. A 56" X 7" HIGH N15°E, 25.1 FT.; FD. A 30" CEDAR WITH A HEALED FACE S20°E, 15.6 FT.; FD. A 15" CEDAR WITH VISIBLE SCRIBES N46°W, 2.8 FT.; FD. A 21" HEMLOCK WITH A HEALED FACE S52°W, 43.5 FT.

N - 801558.921 E - 3980370.489

CORNER #2: FD. A 3" BRASS CAP AT THE CLOSING CORNER OF SECTIONS 19 AND 30, T.20S., R.11 W., W.M., ONLY. FD. A 22" HEMLOCK WITH A HEALED FACE S78°E, 10.7 FT.; FD. A 13" CEDAR WITH A HEALED FACE S4°W, 7.1 FT.; FD. A 15" HEMLOCK WITH VISIBLE SCRIBES N64°E, 43.1 FT.; FD. A 23" DF WITH VISIBLE SCRIBES S36°E, 13.6 FT.

N - 801424.733 E - 3983008.901

CORNER #3: FD. A 2 1/2" ALUM. PIPE AT THE 1/4 CORNER BETWEEN SECTIONS 19 AND 30 FROM WHICH: FD. A 47" DF STUMP N49°W, 45.0 FT.; FD. A 14" ALDER WITH VISIBLE BARK SCRIBES S80 1/2°E, 19.7 FT.; FD. AN 18" DF WITH A HEALED FACE N70°W, 31.1 FT.; SET A 6" STEEL FENCE POST SOUTH, 1.5 FT.

N - 801295.702 E - 3985599.526

CORNER #4: FD. A DCSO BRASS CAP AT THE CORNER OF SECTIONS 19, 20, 29, AND 30, FROM WHICH: FD. A 41" DF STUMP S62°E, 13.7 FT.; FD. A 52" DF STUMP N80°W, 19.8 FT.; FD. A 5/8" IRON ROD N4°E, 9.8 FT.; FD. A 5/8" IRON ROD N3°E, 15.0 FT.; FD. A 10" SPRUCE WITH VISIBLE SCRIBES N7°W, 7.5 FT.; FD. A 20" HEMLOCK S62°W, 31.1 FT.

N - 798779.328 E - 3985478.767

CORNER #5: SET A 5/8" X 30" REBAR WITH A 2" ALUM. CAP AT THE 1/4 CORNER BETWEEN SECTIONS 29 AND 30 FROM WHICH: I SCRIBED 1/4 S30 BT ON A 10" SPRUCE BEARS N1°W, 2.6 FT.; I SCRIBED 1/4 S29 BT ON A 14" DF BEARS N70°E, 11.2 FT.; I SCRIBED 1/4 S30 BT ON AN 11" SPRUCE BEARS S39°W, 16.5 FT.; I SCRIBED 1/4 S30 BT ON A 14" DF BEARS N88°W, 19.1 FT. AN OLD ROAD BEARS 20 FT. WEST AND A SMALL DRAW BEARS 30 FT. SOUTH.

N - 798895.457 E - 3982864.408

CORNER #6: SET A 5/8" X 30" REBAR WITH A 2" ALUM. CAP AT THE 1/4 CORNER OF SECTION 30 FROM WHICH: I SCRIBED 1/4 S30 BT ON A 46" SPRUCE BEARS N87°W, 51.9 FT.; I BARK SCRIBED 1/4 S30 BT ON A 17" ALDER BEARS N5°E, 79.2 FT.; I BARK SCRIBED 1/4 S30 BT ON A 16" ALDER BEARS N74°E, 22.0 FT.; I SCRIBED 1/4 S30 BT ON A 39" HEMLOCK BEARS S19°E, 55.3 FT.

N - 798955.573 E - 3981510.786

CORNER #7: SET A 5/8" X 30" REBAR WITH A 2" ALUM. CAP AT THE CWI/16 CORNER OF SECTION 30 FROM WHICH: I BARK SCRIBED CWI/16 BT ON A 17" ALDER BEARS N13°W, 17.1 FT.; I BARK SCRIBED CWI/16 BT ON A 14" ALDER BEARS S72°E, 25.3 FT.

N - 799218.496 E - 3980306.558

CORNER #8: SET A 5/8" X 30" REBAR WITH A 2" ALUM. CAP AT THE 1/4 CORNER OF SECTION 25, T.20 S., R.12 W., ONLY FROM WHICH: I SCRIBED 1/4 S25 BT ON A 20" DF BEARS N47°W, 26.9 FT.; I SCRIBED 1/4 S25 BT ON A 14" DF BEARS S65°W, 13.0 FT.; I SCRIBED 1/4 S25 BT ON A 16" DF BEARS S30°W, 24.0 FT.; I SCRIBED 1/4 X BT ON A 20" DF BEARS S69°E, 36.8 FT. THIS POSITION FALLS ON AN EAST-WEST RIDGE TOP.

N - 799009.323 E - 3980300.841

CORNER #9: SET A 5/8" X 30" REBAR WITH A 2" ALUM. CAP AT THE 1/4 CORNER OF SECTION 30, T.20 S., R.11 W., ONLY FROM WHICH: I SCRIBED 1/4 S30 BT ON AN 11" SPRUCE BEARS N36°E, 7.7 FT.; I SCRIBED 1/4 S30 BT ON A 23" DF BEARS N85°E, 40.6 FT.; I SCRIBED 1/4 X BT ON A 20" HEMLOCK BEARS S13°W, 4.4 FT.; I SCRIBED 1/4 X BT ON A 24" DF BEARS N32°W, 29.5 FT. THIS POSITION FALLS 100 FT. SOUTH OF AN EAST-WEST CREEK.

N - 797685.234 E - 3981455.72

CORNER #10: SET A 5/8" X 30" REBAR WITH A 2" ALUM. CAP AT THE SWI/16 CORNER OF SECTION 30 FROM WHICH: I BARK SCRIBED SWI/16 BT ON A 12" ALDER BEARS S88°W, 34.0 FT.; I BARK SCRIBED SWI/16 BT ON AN 18" ALDER BEARS N61°E, 24.9 FT.

N - 797629.842 E - 3982792.121

CORNER #11: SET A 5/8" X 30" REBAR WITH A 2" ALUM. CAP AT THE CSI/16 CORNER OF SECTION 30 FROM WHICH: I SCRIBED CSI/16 BT ON AN 18" SPRUCE BEARS S1°W, 19.3 FT.; I SCRIBED CSI/16 BT ON A 16" DF BEARS N76°E, 42.2 FT.

N - 797575.478 E - 3984105.293

CORNER #12: SET A 5/8" X 30" REBAR WITH A 2" ALUM. CAP AT THE SEI/16 CORNER OF SECTION 30 FROM WHICH: I SCRIBED SEI/16 BT ON A 17" DF BEARS N16°E, 24.4 FT.; I SCRIBED SEI/16 BT ON AN 11" DF BEARS S30°E, 10.7 FT.

N - 796262.893 E - 3985358.131

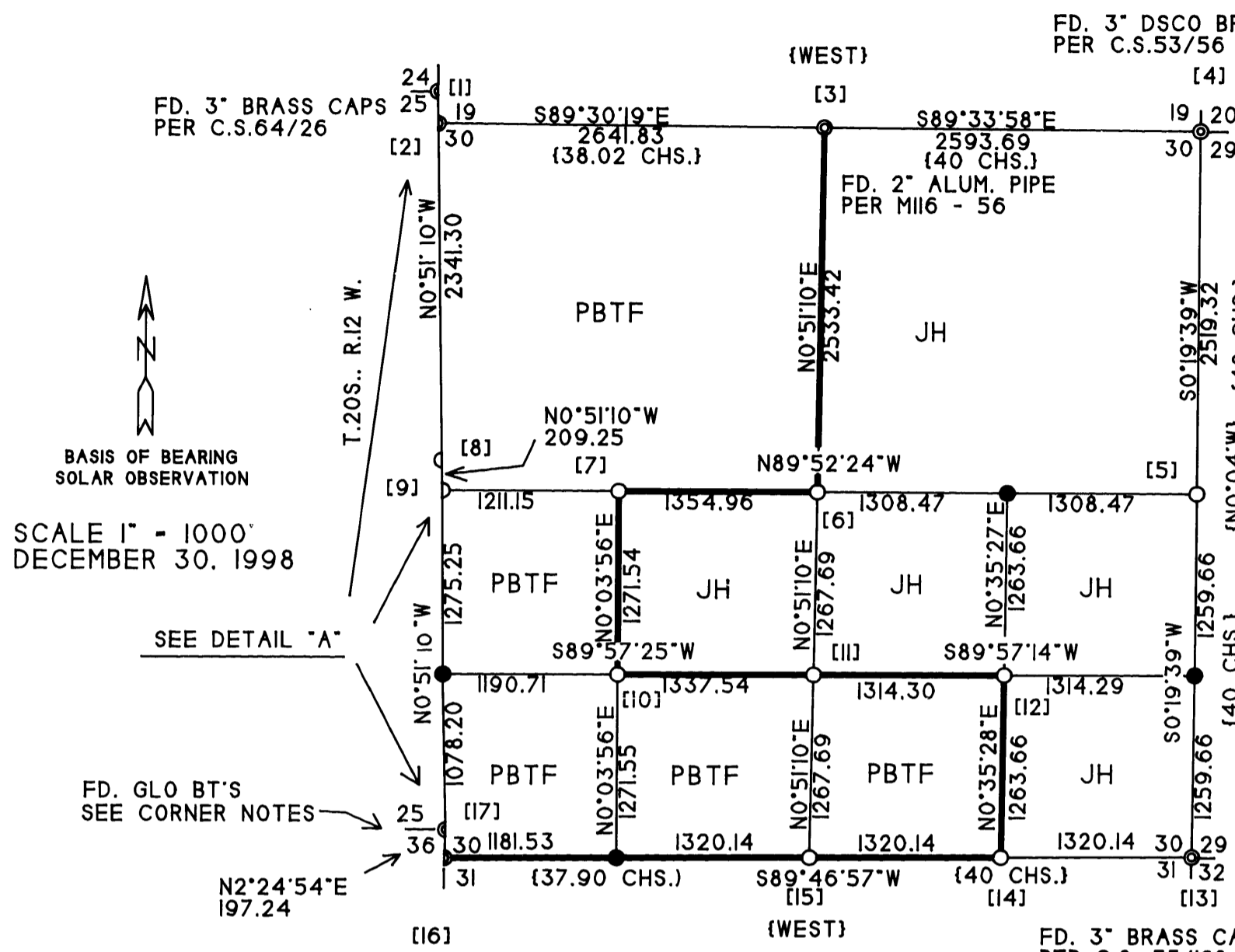
CORNER #13: FD. A 3" BRASS CAP AT THE CORNER OF SECTIONS 29, 30, 31, AND 32 FROM WHICH: FD. A 48" DF STUMP WITH VISIBLE SCRIBES BEARS S65°W, 33.0 FT.; FD. A 46" DF STUMP WITH VISIBLE SCRIBES BEARS S73 E, 37.1 FT.; FD. A 38" DF STUMP WITH VISIBLE SCRIBES BEARS N83 E, 36.4 FT.; FD. BOTH STEEL FENCE POSTS PER C.S. FILE 55/128.

N - 796313.557 E - 3984038.974

CORNER #14: SET A 5/8" X 30" REBAR WITH A 2" ALUM. CAP AT THE EI/16 CORNER BETWEEN SECTIONS 30 AND 31 FROM WHICH: I SCRIBED EI/16 S31 BT ON A 19" DF BEARS S20°E, 10.8 FT.; I SCRIBED EI/16 S31 BT ON AN 11" DF BEARS S71°W, 15.6 FT.

N - 796364.220 E - 3982719.819

CORNER #15: SET A 5/8" X 30" REBAR WITH A 2" ALUM. CAP AT THE 1/4 CORNER BETWEEN SECTIONS 30 AND 31 FROM WHICH: I SCRIBED 1/4 S31 BT ON A 16" DF BEARS S49°W, 10.1 FT.; I SCRIBED 1/4 S31 BT ON A 14" DF BEARS S11°E, 20.2 FT.; I SCRIBED 1/4 S30 BT ON A 12" DF BEARS N86°E, 14.9 FT.; I SCRIBED 1/4 S30 BT ON A 15" DF BEARS N14°W, 7.0 FT.



N - 796460.223 E - 3980219.999

CORNER #16: SET A 5/8" X 30" REBAR WITH A 2" ALUM. CAP AT THE CLOSING CORNER OF SECTIONS 30 AND 31 FROM WHICH: FD. A 20" DF STUMP WITH VISIBLE SCRIBES (ORIGINAL) BEARS N25°W, 18 lks.; I SCRIBED T20S RIW CC BT ON A 12" HEMLOCK (TWIN) BEARS N24°W, 24.9 FT.; I SCRIBED T20S RIW S30 CC BT ON A 21" SPRUCE BEARS N23°E, 23.9 FT.; I SCRIBED T20S RIW S31 CC BT ON A 20" DF BEARS S46°E, 35.2 FT.; I SCRIBED T20S RIW S31 CC BT ON A 10" DF BEARS S1°E, 35.5 FT.

N - 796656.759 E - 3980236.616

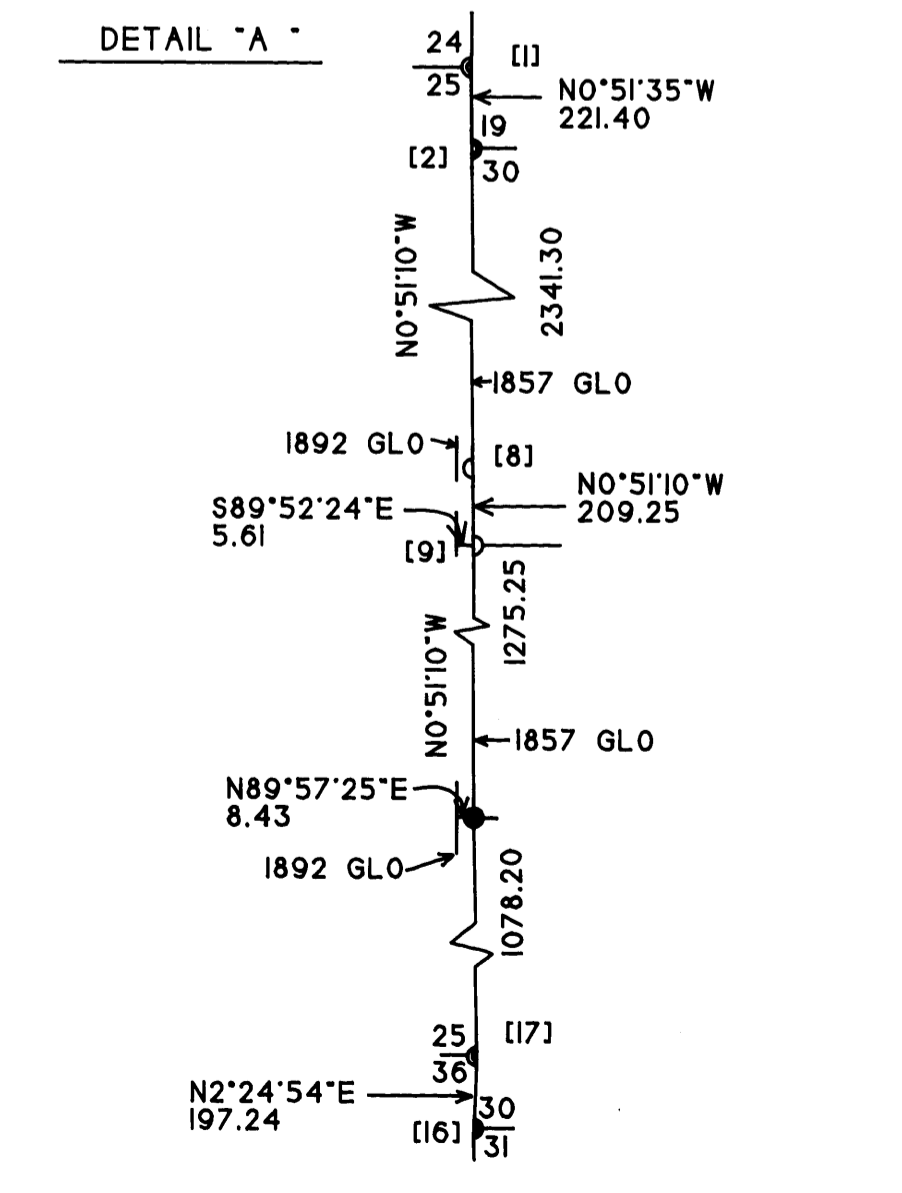
CORNER #17: SET A 5/8" X 30" REBAR WITH A 2" ALUM. CAP AT THE CORNER OF SECTIONS 25 AND 36, T.20 S., R.11 W., FROM WHICH: FD. A 50" SPRUCE STUMP WITH SCRIBES, OPENED UP FACE, (ORIGINAL) BEARS N18°E, 54 lks. TO THE FACE: FD. REMAINS OF SCRIBE MARKS IN A VERY ROTTEN SPRUCE STUMP, APPROX. 65" (ORIGINAL) BEARS N7°W, 25 lks. TO THE FACE: I BARK SCRIBED T20S RI2W X BT ON A 20" ALDER BEARS S73°E, 6.3 FT.; I BARK SCRIBED T20S RI2W S36 BT ON A 12" ALDER BEARS S11°W, 11.3 FT.; I BARK SCRIBED T20S RI2W S25 BT ON A 19" ALDER BEARS N87°W, 4.9 FT.

NARRATIVE

THE PURPOSE OF THIS SURVEY WAS TO ESTABLISH THE BOUNDARIES AS SHOWN FOR FUTURE FOREST OPERATIONS. CONTROL FOR THIS SURVEY WAS BASED ON THE FOLLOWING SURVEY RECORDS: SUBDIVISION OF T.20 S., R.11 W., AND T.20 S., R.12 W.; CORNER RENEWAL T.20 S., R.11 W., POINT IDENTIFIER NO.'S 200200, 200300, 140300, 100300, AND 100303; M116 - 56; C.S. 64/26; C.S. 53/56; C.S. 55/128. THIS SURVEY WAS BASED ON A SERIES OF LOOP TRAVERSES. A THOROUGH SEARCH WAS MADE FOR ALL ORIGINAL CORNERS. THE ONLY ORIGINAL POSITIONS FOUND WERE CORNERS [16] AND [17]. THE W1/4, E1/4, AND S1/4 WERE RELOCATED BY SINGLE PROPORTIONATE MEASUREMENT. THE NW AND SW CORNERS OF SECTION 30 ARE CLOSING CORNERS ON THE EAST BOUNDARY OF T.20 S., R.12 W., CORNERS [2] AND [16] WERE USED TO CALCULATE THE POSITION OF THE W1/4 AND THE S1/6 OF SECTION 30 ONLY. ONCE THE SECTION WAS SUBDIVIDED, THESE POSITIONS WERE MOVED EAST ON LINE THE TO THE INTERSECTION BETWEEN CORNERS [1] AND [17]. SEE DETAIL "A". CORNER [16] DOES NOT FALL ON THE RANGE LINE. THE TRUE POSITION WAS NOT MOUNTED DURING THIS SURVEY. IT WOULD REQUIRE TRAVERSING 1 MILE SOUTH TO DETERMINE THE TRUE POSITION. ALL NEW BEARING TREES WERE SCRIBED (HARDWOODS BARK SCRIBED) AND THE FACES PAINTED RED. DISTANCES WERE MEASURED TO A 6" SPIKE AT SIDE CENTER BASE. BEARINGS WERE MEASURED WITH A HAND COMPASS (MAGNETIC DELC. 20°E), A 6 FT. STEEL FENCE POST WAS SET WITHIN 2 FT. OF ALL NEW CORNERS. THE FIELD WORK WAS PERFORMED BETWEEN OCTOBER 16, 1998 AND JANUARY 5, 1999, ASSISTING ME WITH THIS SURVEY WAS RANDY MADDEN. STATE PLANE COORDINATES WERE GENERATED USING MANDASHA CORPORATION OWNED GPS EQUIPMENT. CONTROL WAS TAKEN FROM STATION "REED" IN THE OREGON H.A.R.N.. THE REAL TIME KINEMATIC METHOD WAS USED.

SURVEY FOR: PORT BLAKELY TREE FARMS 1325 FOURTH AVE., 10TH FLOOR SEATTLE, WA 98101-2524 SURVEY BY: CLYDE F. MULKINS TIMBER CRUISING & ENGINEERING P.O. BOX 750 COOS BAY, OR. 97420 REGISTERED PROFESSIONAL LAND SURVEYOR TROY J. RAMBO JULY 14, 1998 2865 EXPIRES 12-31-00

- LEGEND: FD. 2 1/2" BRASS CAP PER M 79 - 30 UNLESS OTHERWISE NOTED; SET CORNER - SEE CORNER NOTES; CALCULATED POSITION - NOT SET; CORNER REF. NO.; G.L.O. BEARING/DIST.; LINES MARKED WITH 6" STEEL POSTS, RED FLAGGING, AND RED PAINTED BLAZES; PBTf PORT BLAKELY TREE FARMS; JH JOHN HANCOCK INSURANCE



MAP FILE M131-9

MAP FILE M131-9

COUNTY SURVEYORS FILE DATA DO NOT REMOVE FROM OFFICE