

MAP FILE M/31-76

FILED

Date: 7-19-1999 By: JP
This survey consists of:
Map: M/31-76
Narrative:
Corner Rpt:

DOUGLAS COUNTY
JP SURVEYOR

FOUND 2" BRASS CAP
STAMPED
PLS 458
S-N
1/64
S31 | S32
1979

STAMPED
PLS 458
1/4
S31 | S32
1979

51°03'00"W 65.29'
POSITION OF 1/4 CORNER TO WHICH LOCAL DEEDS WERE TIED, INCLUDING THAT OF TL 700, PRIOR TO ESTABLISHMENT OF THE BRASS CAP

NARRATIVE / LEGEND

DATE JUNE 16, 1999

PURPOSE TO MONUMENT THE CORNERS OF TL 700 AND THE CORNERS OF THE APPROXIMATE FIVE ACRE ADJUSTMENT

PROCEDURE FROM THE MONUMENTS ON THE EAST LINE OF SECTION 31 POSITIONS (2) FOR CORNERS OF TL 700 WERE COMPUTED HOLDING ONLY THE NORTHING OF THE RECORD CALL FROM CS 51/24 AND THE DEED AS THE EASTING IS OBVIOUSLY IN ERROR. NO RECORD MONUMENTS WERE RECOVERED. THE PARCEL WAS POSITIONED FROM THE CALCULATED "OLD" 1/4 AS IT CERTAINLY WAS THE POINT USED IN CS 51/24 AND FALLS WHERE THE IMPROVEMENTS EXISTED AT THAT TIME.

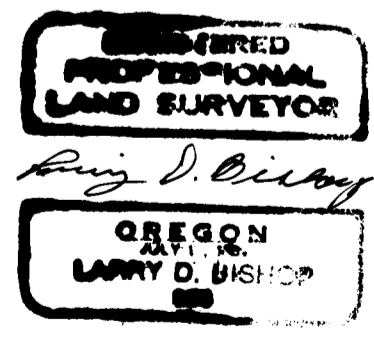
BEING UNABLE TO RECOVER ADDITIONAL R/W MONUMENTS FOR NEARLY A MILE UP COUNTY ROAD 48A THE BEARING OF THE COUNTY ROAD WAS DETERMINED AS THE AVERAGE OF THE CENTERLINE OF THE PAVEMENT.

INSTRUMENT TOPCON GTS-303d

- SET 5/8" X 30" IRON ROD WITH PLASTIC STAMPED PLS 896
- FOUND MONUMENT AS NOTED
- CALCULATED - NOT SET
- () RECORD COURSE PER DEED AND CS 51/24
- * * RECORD COURSE PER M123-37
- - RECORD COURSE PER PLAN OF COUNTY ROAD 48A

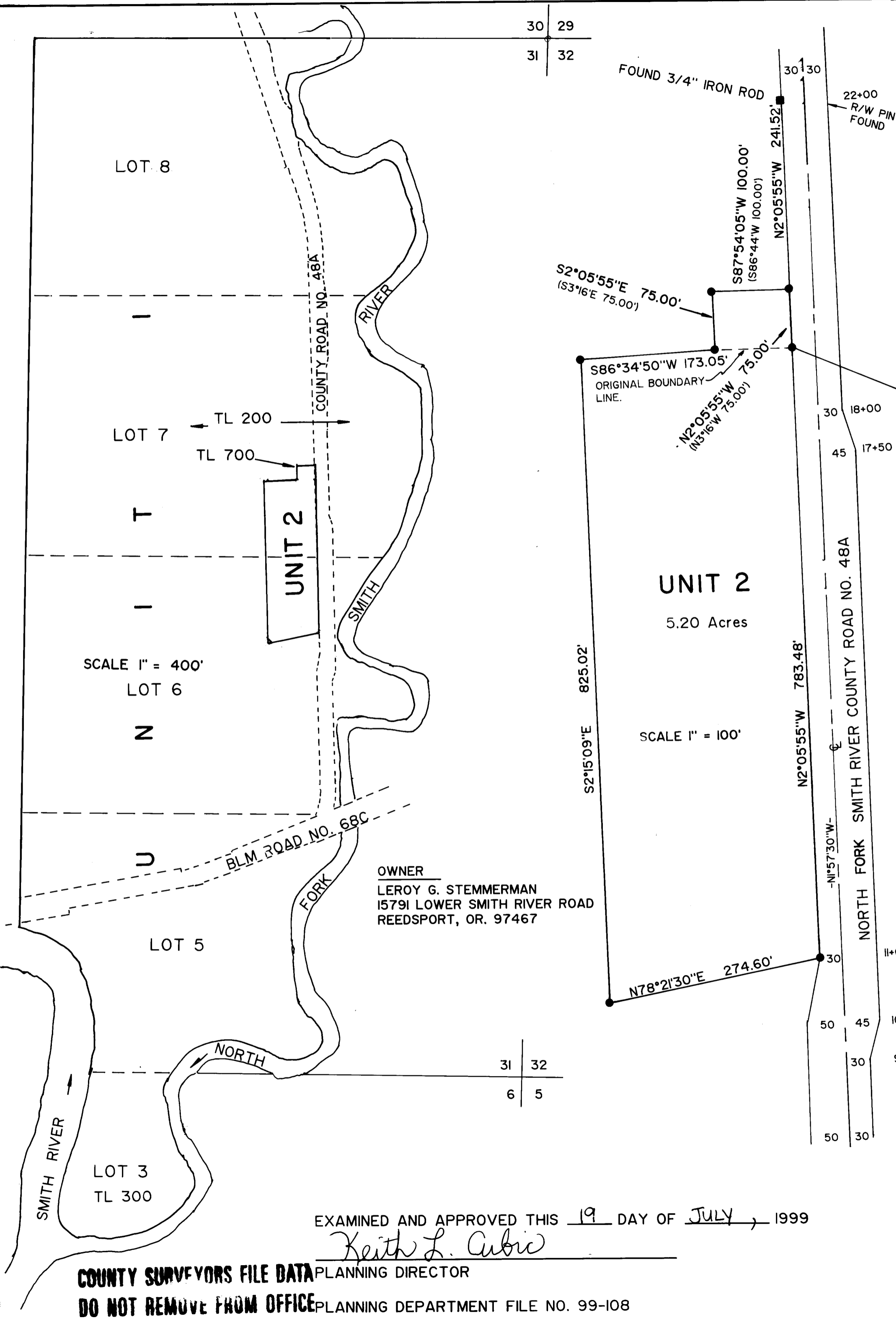
BOUNDARY LINE ADJUSTMENT / SURVEY

LOTS 5-6-7-8 SECTION 31, T. 20 S., R. 10 W. and LOT 3 SECTION 6, T. 21 S., R. 10 W., W.M. EAST 1/2 SEC.31, NE 1/4 SEC. 6 DOUGLAS COUNTY, OREGON



EXPIRES 12/31/99

BISHOP SURVEYING, INC.
87830 TERRACE VIEW DRIVE
FLORENCE, OR. 97439
(541) 997-1308



EXAMINED AND APPROVED THIS 19 DAY OF JULY, 1999

Keith L. Cubic

COUNTY SURVEYORS FILE DATA PLANNING DIRECTOR
DO NOT REMOVE FROM OFFICE PLANNING DEPARTMENT FILE NO. 99-108

MAP FILE M/31-76