

COUNTY SURVEYORS FILE DATA
DO NOT REMOVE FROM OFFICE

SURVEY FOR NORTH PACIFIC INSURANCE CO.

LOCATED IN THE SW1/4 OF SECTION 14, TWP. 22 S. RGE 10 W., W.M., DOUGLAS COUNTY, OREGON

FILED





Date: 6-7-1999 By: JP
This survey consists of:
Map: M131-60
Narrative: _____
Corner Rpt: _____

DOUGLAS COUNTY
SURVEYOR *JP*

SURVEY NARRATIVE

THE PURPOSE OF THIS SURVEY WAS TO RE-ESTABLISH A PORTION OF THE EAST-WEST CENTERLINE OF THE SOUTHWEST ONE-QUARTER OF SECTION 14 AS SHOWN ON THE RECORD OF SURVEY FOR JERRY HARRIS IN AUGUST OF 1991, BY STUNTZNER ENGINEERING. THE PORTION RE-ESTABLISHED IS IN THE VICINITY OF THE UPPER LIMIT OF A SLIDE WHICH OCCURRED IN 1996. I FOUND THE SOUTH 1/16 CORNER MONUMENT BETWEEN SECTIONS 14 AND 15, AND THE CENTER-SOUTH 1/16 CORNER MONUMENT AS SET BY STUNTZNER ENGINEERING. BY A CLOSED LOOP TRAVERSE ON APRIL 13, 14, 15, 1999, BETWEEN THESE TWO MONUMENTS USING A PENTAX TOTAL STATION INSTRUMENT WITH AN ANGULAR ACCURACY OF 10 SECONDS OF ARC, I ESTABLISHED A CONTROL LINE FROM WHICH THE TRUE LINE BETWEEN THE MONUMENTS COULD BE RE-ESTABLISHED. WITH A RELATIVE CLOSING ACCURACY EXCEEDING 1:15000, I BALANCED THE TRAVERSE USING THE COMPASS RULE. FROM THE BALANCED TRAVERSE I SET TWO POINTS ON THE COMPUTED TRUE LINE BETWEEN THE TWO FOUND MONUMENTS.

LEGEND

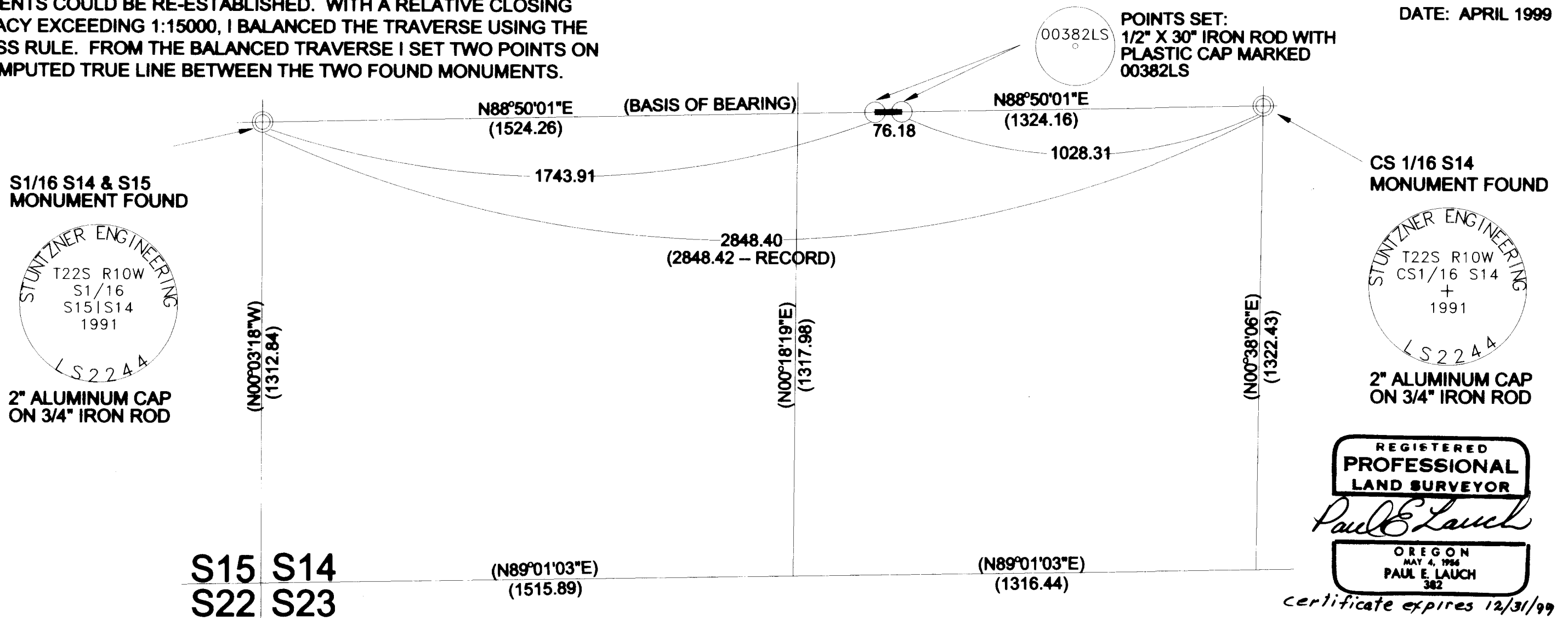
-  MONUMENT FOUND
-  MONUMENT SET
-  RECORD DISTANCE
-  LINE RE-ESTABLISHED

BASIS OF BEARING
R.O.S. BY STUNTZNER ENGINEERING
FOR JERRY HARRIS
AUGUST 1991
MAP FILE M113-76B

SCALE 1" = 300'



DATE: APRIL 1999



REGISTERED
PROFESSIONAL
LAND SURVEYOR

Paul E. Lauch

OREGON
MAY 4, 1996
PAUL E. LAUCH
382

certificate expires 12/31/99

SURVEY BY PAUL E. LAUCH 17307 SE 36TH STREET VANCOUVER, WASHINGTON 98683

MAP FILE M131-60

MAP FILE M131-60