

RECORD OF SURVEY

NW 1/4 OF SECTION 15, T. 26S., R. 2W., W.M. DOUGLAS COUNTY, OREGON

FILED
Date: 6-4-1999 By: JP
This survey consists of:
Map: M/31-58
Narrative: _____
Corner Rpt: _____
DOUGLAS COUNTY
JP SURVEYOR

- LEGEND:**
- ⊙ = SET 5/8" x 30" IRON ROD w/2" ALUMINUM CAP
 - = FOUND BCIP
 - △ = COMPUTED POINT
 - P— = LINE POSTED WITH STEEL POSTS
 - () = RECORD PER 1959 USBLM DEPENDENT SURVEY AND SUBDIVISION
 - # = CORNER DESCRIPTION #, SEE NARRATIVE.

REGISTERED
PROFESSIONAL
LAND SURVEYOR

Kristian Degroot
OREGON
JUL 27 1999
KRISTIAN DEGROOT

RENEWAL DATE: 12/31/99

3. 1/4 S10/S15---FOUND A 2 1/2" IRON POST BY ZIRPEL AND GLENN IN 1959, FIRMLY SET, PROJECTING 6" ABOVE THE GROUND IN A 2 FOOT DIAMETER MOUND OF STONE WITH A 3/4" USBLM STD. BRASS CAP STAMPED:

T 26 S R 2 W
1 S10
4 S15
1959

FROM WHICH BEARING TREES BY ZIRPEL AND GLENN IN 1959:
A 40" D. FIR STUMP BEARS N.27°15'W., 29.4 FEET WITH A HEALED BLAZE.
A 24" D. FIR STUMP BEARS S.65°15'E., 90.4 FEET WITH A HEALED BLAZE.

4. CN 1/16 S15---FOUND A 2 1/2" IRON POST BY ZIRPEL AND GLENN IN 1959, FIRMLY SET, PROJECTING 2" ABOVE THE GROUND WITH A 3/4" USBLM STD. BRASS CAP STAMPED:

C
N 1/16 | S15
C
1959

FROM WHICH BEARING TREES BY ZIRPEL AND GLENN IN 1959:
A 30" D. FIR BEARS S.71°E., 33.0 FEET WITH A HEALED BLAZE.
A 23" D. FIR BEARS N.26°30'W., 23.8 FEET WITH A HEALED BLAZE.

5. NW 1/16 S15---SET A 5/8"x30" IRON ROD 28" IN THE GROUND WITH A 2" ALUMINUM CAP STAMPED:

T 26 S R 2 W
NW 1/16 S15
1999
PLS 1941

FROM WHICH NEW BEARING TREES:
A 20" D. FIR BEARS S.50°W., 14.2 FEET SCRIBED "NW 1/16 S15 BT".
A 10" D. FIR BEARS S.55°E., 29.4 FEET SCRIBED "NW 1/16 S15 BT".

6. N 1/16 S16/S15---FOUND A 2 1/2" IRON POST BY ZIRPEL AND GLENN IN 1959, FIRMLY SET, PROJECTING 4" ABOVE THE GROUND WITH A 3/4" USBLM STD. BRASS CAP STAMPED:

N 1/16
S15
1959

FROM WHICH BEARING TREES BY ZIRPEL AND GLENN IN 1959:
A 27" CHINQUAPIN BEARS N.42°45'E., 16.6 FEET WITH A HEALED BLAZE. (REC. N.43°30'E., 27 LKS.)
A 30" SUGAR PINE BEARS S.23°45'E., 62.7 FEET WITH A HEALED BLAZE. (REC. 96 LKS.)

7. 1/4 S15 ONLY---FOUND A 2 1/2" IRON POST BY ZIRPEL AND GLENN IN 1959, FIRMLY SET, PROJECTING 4" ABOVE THE GROUND WITH A 3/4" USBLM STD. BRASS CAP STAMPED:

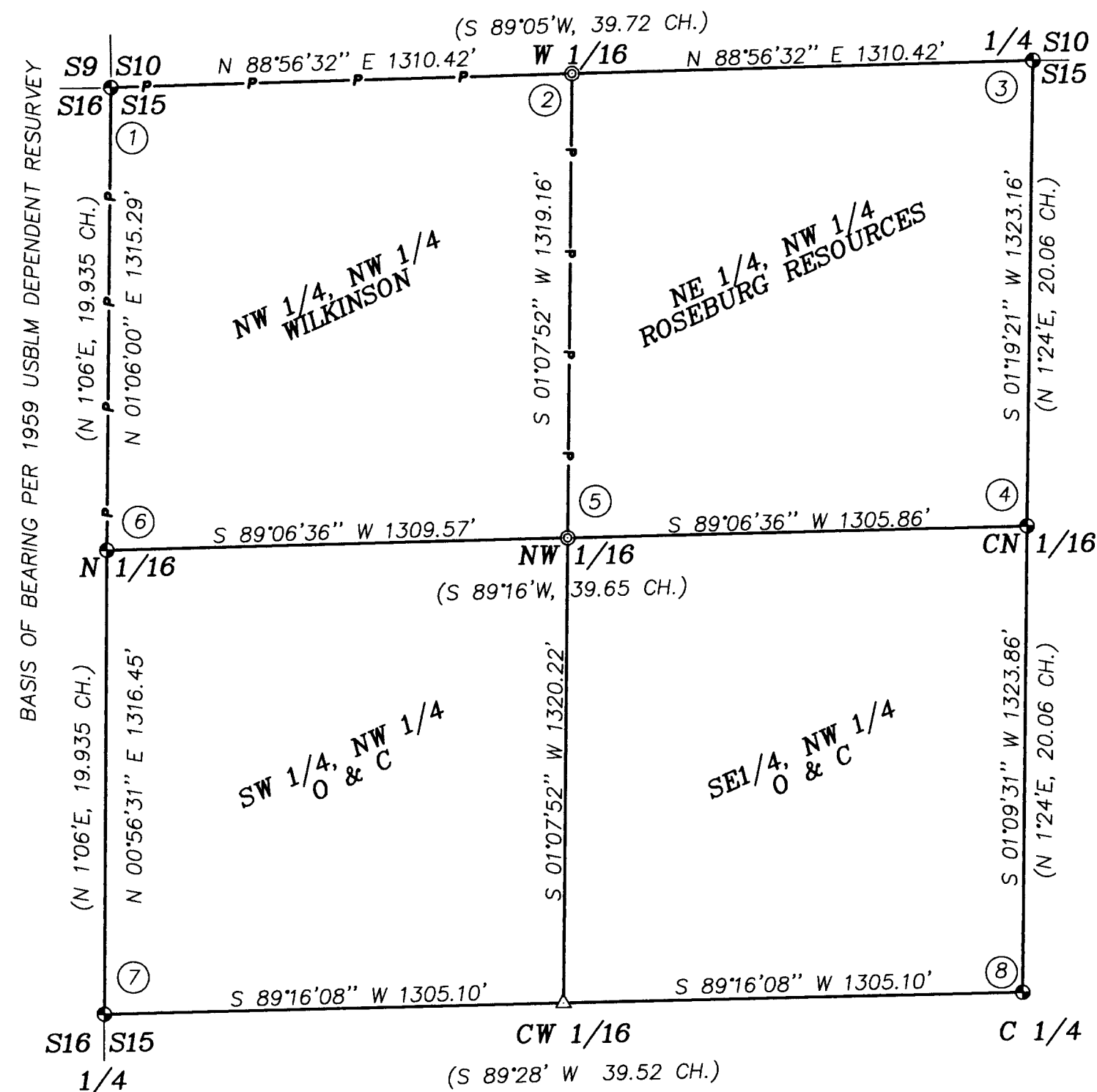
T 26 S R 2 W
1/4
S15
1959

FROM WHICH BEARING TREES BY ZIRPEL & GLENN IN 1959:
A 30" D. FIR BEARS N.67°15'E., 21.8 FEET WITH A HEALED BLAZE (REC. N.69°30'E.)
A 19" D. FIR BEARS S.62°15'E., 24.3 FEET WITH A HEALED BLAZE (REC. S.60°30'E., 36.5 LKS.)

8. C 1/4 S15---FOUND A 2 1/2" IRON POST BY ZIRPEL & GLENN IN 1959, FIRMLY SET FLUSH WITH THE GROUND, WITH A 3/4" USBLM STD. BRASS CAP STAMPED:

C 1/4 S15
1959

FROM WHICH BEARING TREES BY ZIRPEL & GLENN IN 1959:
A 51" D. FIR BEARS S.71°E., 21.1 FEET WITH A HEALED BLAZE. (REC. S.74°45'E.)
A 23" SUGAR PINE BEARS N.32°W., 17.2 FEET WITH A HEALED BLAZE. (REC. N.35°W.)



NARRATIVE:

THE PURPOSE OF THIS SURVEY WAS TO ESTABLISH THE WEST 1/16 OF SECTIONS 10 AND 15 AND THE NW 1/16 OF SECTION 15 AND TO POST THE NORTH, EAST AND WEST LINE OF THE NW 1/4, NW 1/4 OF SECTION 15. THE SURVEY WAS CONTROLLED BY MONUMENTS FOUND PER THE 1959 USBLM DEPENDENT RESURVEY AND SECTION SUBDIVISION OF SECTION 15 BY IRVING ZIRPEL, JR. AND WILLIAM W. GLENN. CLOSED LOOP RANDOM LINE TRAVERSES WERE SURVEYED BETWEEN ALL CONTROLLING CORNERS BY MATT DIXON AND AARON FANNING USING A SOKKIA SET 5A TOTAL STATION WITH COMPUTATIONS AND DRAFTING BY KRIS DEGROOT.

CORNER DESCRIPTIONS:

1. S9/S10/S15/S16---FOUND A 2" IRON PIPE BY MENSCH IN 1918, FIRMLY SET, PROJECTING 6" ABOVE THE GROUND WITH A 2 1/2" USGLO BRASS CAP STAMPED:

T 26 S R 2 W
S9 S10
S16 S15
1918

FROM WHICH THE ORIGINAL BEARING TREES:
A 28" ROTTED FIR STUMP BEARS S.14°E., 46 LKS.
A 44" ROTTED FIR STUMP BEARS N.46°30'W., 78 LKS.
AND BEARING TREES BY ZIRPEL AND GLENN IN 1959:
A 20" D. FIR BEARS N.27°E., 26.1 FEET WITH A HEALED BLAZE. (REC. 40 LKS.)

A 27" D. FIR BEARS S.68°45'E., 22.4 FEET WITH A HEALED BLAZE. (REC. S.68°30'E., 34 1/2 LKS.)
A 22" W. FIR BEARS S.36°45'W., 28.4 FEET WITH A HEALED BLAZE.
A 21" D. FIR BEARS N.57°45'W., 45.9 FEET WITH A HEALED BLAZE.

2. W 1/16 S10/S15---SET A 5/8"x30" IRON ROD 30" IN THE GROUND WITH A 2" ALUMINUM CAP STAMPED:

T 26 S R 2 W
W 1 S10
16 S15
1999
PLS 1941

FROM WHICH NEW BEARING TREES:
A 19" D. FIR BEARS S.82°E., 43.7 FEET, SCRIBED "W 1/16 S15 BT".
A 13" D. FIR BEARS N.29°W., 14.3 FEET, SCRIBED "W 1/16 S10 BT".

BTS ENGINEERING & SURVEYING, INC.
431 S.E. MAIN ST., ROSEBURG, OR 97470
PHONE (541) 673-0966 FAX (541) 673-0105

SCALE: 1" = 400'
DATE: JUNE, 1999

FOR: JAMES WILKINSON
1636 W. BROWN
ROSEBURG, OREGON 97470

ROSEBURG RESOURCES
P.O. BOX 1088
ROSEBURG, OREGON 97470

JOB #: 99-032
FILE: WILKINSON.DWG
SHEET 1 OF 1