

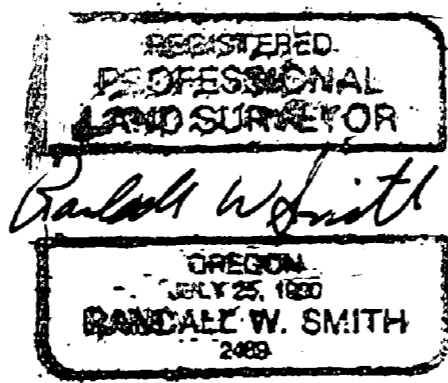
SURVEY FOR DOUGLAS COUNTY TO AMEND M 42 - 61 RESURVEY OF PART OF THE RANGE LINE BETWEEN T 25 S, R 5 W, & R 6 W

SURVEYED BY DOUGLAS CO. SURVEYOR'S OFFICE
RM. 105 A, COURTHOUSE ROSEBURG, OR.
MARCH 1999 SCALE 1" = 1000'



BEARINGS ARE BASED ON M 42-61

- SET 2 3/8" DIA. BRASS CAP ON 1 3/8" O.D. BY 32" IRON PIPE.
- FOUND 1972 DCSO BRASS CAP UNLESS NOTED OTHERWISE
- △ CALCULATED POINT NOTHING FOUND OR SET



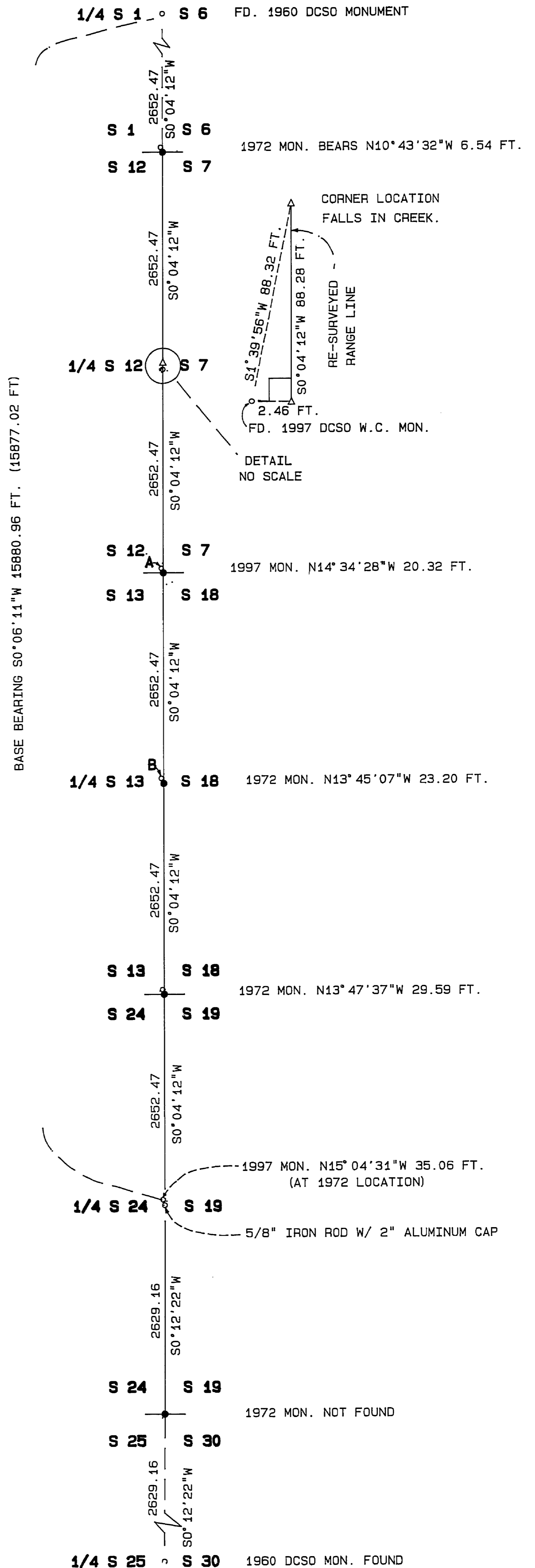
CERTIFICATE EXPIRES 6/30/2000

A RECENT MAP (NOT YET RECORDED) BY SURVEYOR DEGROOT LOCATES THE QUARTER CORNER BETWEEN SECTIONS 19 & 24 USING TIES MADE TO THE CORNER AS SHOWN ON THE "SUTHERLIN LAND AND WATER COMPANY PLAT M" (VOL. 4 PAGE 67). THE DEGROOT LOCATION DISAGREES WITH THE LOCATION AS SHOWN ON A MAP FILED IN 1972 (M 42-61) BY FORMER COUNTY SURVEYOR INGRAM. THE M 42-61 SURVEY ESTABLISHED THIS CORNER AS WELL AS SEVERAL OTHER CORNERS ALONG THE RANGE LINE BY PROPORTION. THIS SURVEY WAS DONE TO REPROPORTION THE CORNERS ALONG THE RANGE LINE USING THE DEGROOT LOCATION ALONG WITH THE 1/4 CORNER BETWEEN SECTIONS 1 & 6 AND THE 1/4 CORNER BETWEEN SECTIONS 25 & 30 FOR CONTROL. AFFECTED CORNERS AND THEIR RELATIONSHIP TO THE REPROPORTIONED LOCATIONS ARE AS SHOWN ON THIS MAP. SEE DOUGLAS CO. SURVEYOR CORNER RENEWAL RECORDS FOR BEARING TREES AND ACCESSORIES.

THE LINE BETWEEN THE 1972 MONUMENTS LABELED A & B SITUATED ON THE NORTH 1/2 OF THE LINE BETWEEN SECTIONS 13 & 18 MEASURED SO 04'44"W 2649.59 FT. ON THIS SURVEY. M 70-31 SHOWS A DISTANCE OF 2649.99 FT., M 42-61 SHOWS 2646.17 FT.

C.S. FILE 66/11 CONTAINS A BLM ADVISORY LETTER ALONG WITH FIELD DATA AND RECORDS USED.

NOTE: BRASS CAPS ARE REMOVED FROM 1972 DCSO MONUMENTS AND REPLACED WITH DCSO PLASTIC CAPS.



COUNTY SURVEYORS FILE DATA
DO NOT REMOVE FROM OFFICE