

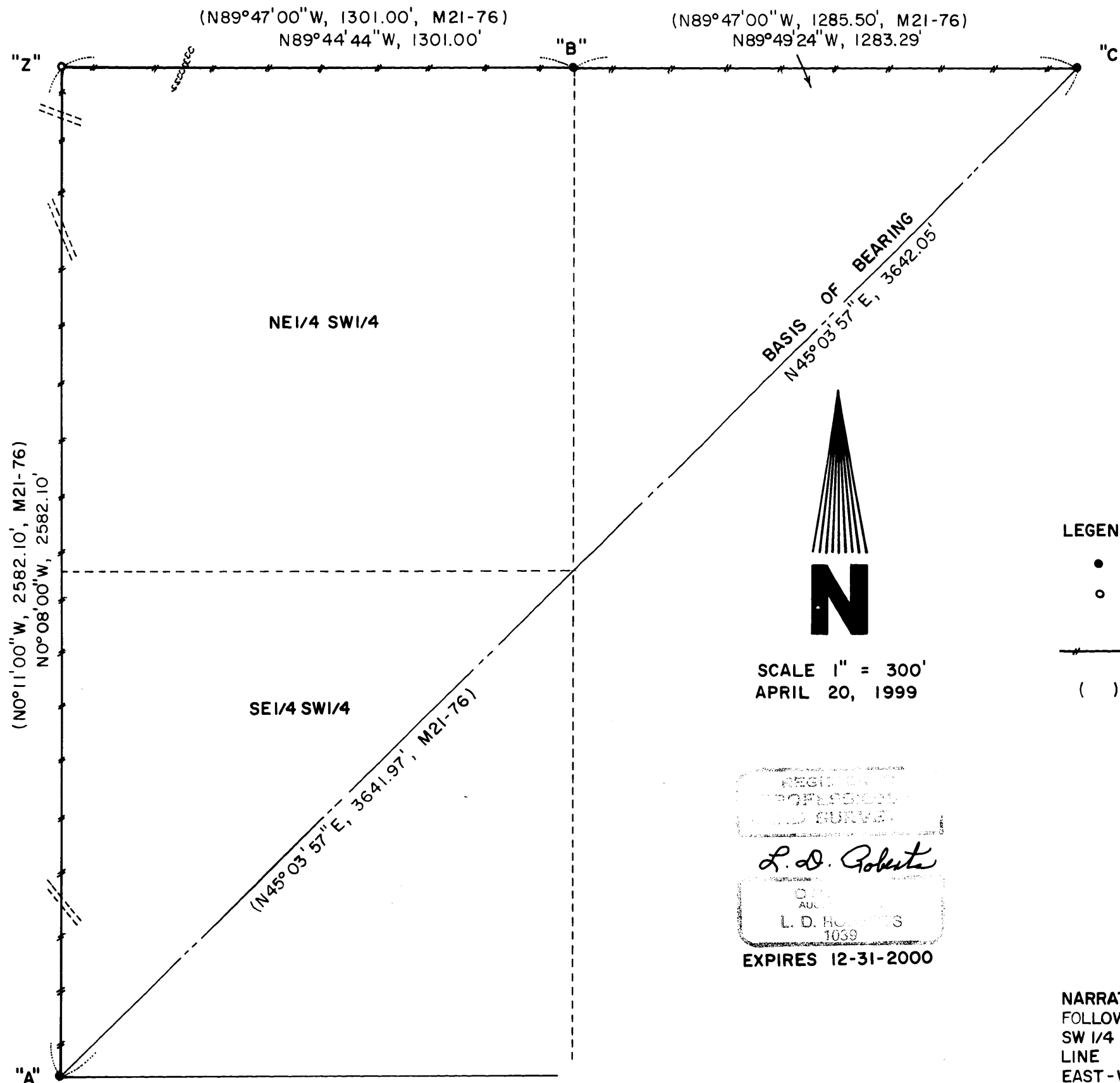
FILED

Date: 5-3-1999 By: JP
This survey consists of:
Map: M131-46
Narrative: _____
Corner Rpt: _____

DOUGLAS COUNTY
JP SURVEYOR

"B" CENTER 1/4 CORNER SECTION 32
FD. "T" IRON SET BY WILFORD HAINES IN SURVEY M21-76
18" FIR, N76°W, 18.0' (SCAR VIS.), 1962 B.T.
22" HEMLOCK, N88°E, 27.0' (SCAR VIS.), 1962 B.T.

"C" C.E. 1/16 CORNER SECTION 32
FD. "T" IRON SET BY WILFORD HAINES IN SURVEY M21-76
20" FIR, N20°W, 1.4' (SCAR VIS.), 1962 B.T.
22" FIR, S40°E, 15.0' (SCAR VIS.), 1962 B.T.



BOUNDARY SURVEY
FOR

SENECA JONES TIMBER COMPANY
IN

SI/2 SECTION 32, T20S, R7W, W.M.
DOUGLAS COUNTY, OREGON

BY
ROBERTS SURVEYING INC.

P.O. BOX 7155

EUGENE, OREGON 97401

PHONE 345-1112

MAP FILE M131-46

LEGEND,

- MONUMENTS FOUND AND USED FOR CONTROL
- MONUMENTS SET - 5/8" x 30" IRON PINS WITH YELLOW PLASTIC CAPS. CAPS MARKED ROBERTS SURVEYING INC.
- LINES MARKED WITH RED PAINTED BLAZES, RED PLASTIC RIBBON AND GREEN METAL FENCE POSTS.
- () DATA OF RECORD - SURVEY M21-76 BY WILFORD HAINES AND DATED JANUARY 3, 1962.
- BASIS OF BEARING - LINE "A-C" FROM SURVEY M21-76 BY WILFORD HAINES.
- DISTANCES TO BEARING TREES ARE CENTER MEASURE
- ALL NEW BEARING TREES ARE SCRIBED AND HAVE A METAL WASHER STAMPED P.L.S. 1039 NAILED TO LOWER BLAZE. LOWER BLAZES ARE PAINTED RED.
- DIRT ROAD = ----- RIDGE = ~~~~~ DRAW OR CREEK = →

REGISTERED
PROFESSIONAL
LAND SURVEYOR

L. D. Roberts

L. D. ROBERTS
1039

EXPIRES 12-31-2000

NARRATIVE, THE PURPOSE OF THIS SURVEY IS TO BLAZE AND POST THE FOLLOWING PROPERTY LINES. 1) THE NORTH-SOUTH CENTERLINE OF THE SW 1/4 2) THE EAST 1/2 OF THE WEST 1/2 OF THE EAST-WEST CENTERLINE OF SECTION 32 AND 3) THE WEST 1/2 OF THE EAST 1/2 OF THE EAST-WEST CENTERLINE OF SECTION 32. ALSO THE C.W. 1/16 CORNER WAS SET IN THIS SURVEY. THE WEST 1/16 CORNER ON THE SOUTH LINE, THE CENTER 1/4 CORNER AND THE C.E. 1/16 CORNER WERE FOUND IN THE FIELD AND USED AS CONTROL FOR THIS SURVEY. AN E.D.M. CONTROL TRAVERSE, USING A WILD T-16 THEODOLITE AND A DI-4L E.D.M., WAS RUN BETWEEN THE CONTROLLING CORNERS FOUND IN THE FIELD. A CLOSED RANDOM PROPERTY LINE TRAVERSE, USING A WILD T-16 THEODOLITE AND A DI-4L E.D.M., WAS RUN ALONG ALL PROPERTY LINES TO BE BLAZED AND POSTED. OFFSETS WERE COMPUTED FROM THIS PROPERTY LINE TRAVERSE TO THE TRUE PROPERTY LINES. PROPERTY LINES WERE MARKED WITH RED PAINTED BLAZES, RED PLASTIC RIBBON AND GREEN METAL FENCE POSTS. THE C.W. 1/16 CORNER, MONUMENT "Z", WAS SET BY DISTANCE-DISTANCE INTERSECTION AS FOLLOWS. THE RECORD DISTANCE OF 1301.00' WAS HELD FROM FOUND MONUMENT "B" AND THE RECORD DISTANCE OF 2582.10' WAS HELD FROM FOUND MONUMENT "A". THUS THE COMPUTED BEARINGS AND DISTANCES OF N89°44'44"W, 1301.00 FEET FOR LINE "B-Z" AND N0°08'00"W, 2582.10 FEET FOR LINE "A-Z".

"A" WEST 1/16 CORNER SOUTH LINE SECTION 32
FD. "T" IRON SET BY WILFORD HAINES IN SURVEY M21-76
32" FIR, S11°E, 37.0' (SCAR VIS.), 1962 B.T.
42" FIR, N06°W, 44.7' (SCAR VIS.), 1962 B.T.

"Z" C.W. 1/16 CORNER SECTION 32
SET 5/8" x 30" IRON PIN WITH YELLOW PLASTIC CAP
10" FIR, N13°W, 19.5' (SCRIBED/METAL WASHER/PAINTED RED)
FD. 30" HEMLOCK, S09°W, 38.0' (SCAR VIS.), 1962 HAINES B.T.
RECORD (S4°30'W, 38.3')

COUNTY SURVEYORS FILE DATA
DO NOT REMOVE FROM OFFICE

MAP FILE M131-46