

MAP FILE M/31-44

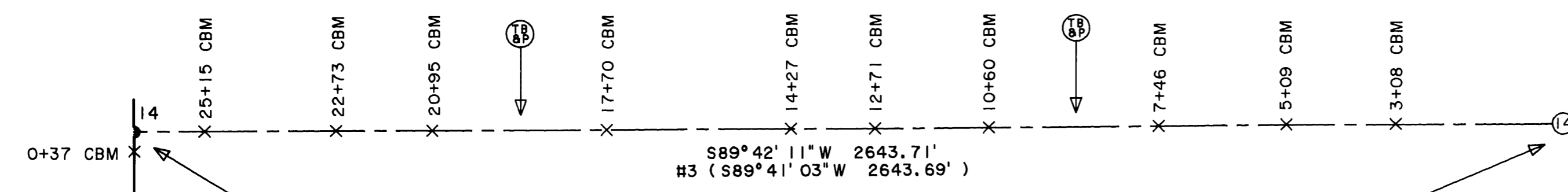
SURVEY BY:
REGISTERED
PROFESSIONAL
LAND SURVEYOR
James M. McIntosh
OREGON
JULY 13, 1984
JAMES M. MCINTOSH
2103
JAMES M. MCINTOSH
379 16TH AVE.
COOS BAY, OREGON

FILED
Date: 4-29-1999 By: JD
This survey consists of:
Map: M/31-44
Narrative: _____
Corner Rpt: _____
DOUGLAS COUNTY
SURVEYOR JP

EXPIRATION DATE OF CERTIFICATE 12-31-00

**COUNTY SURVEYORS FILE DATA
DO NOT REMOVE FROM OFFICE**

SURVEY NARRATIVE TO COMPLY WITH PARAGRAPH 209.250 OREGON REVISED STATUTES



WEST 1/4 CORNER FOUND
OSBF P/C, 1959 (IN PLACE)
12" FIR (1906) S77°E 23 LKS (NOW
WINDFALL DOWNHILL, FACE EXPOSED &
BADLY DECAYED, NO SCRIBES VISIBLE)
10" FIR (1906) N80°W 44 lks (NOW
23" X 5' HIGH ROTTEN STUB IN PLACE,
FACE EXPOSED, NO SCRIBES VISIBLE)
SUMMIT OF DIVIDE SOUTH 37 lks (IN
PLACE)
30" FIR (1959) S60°E 36.9' (NOW 45"
X 2' HIGH STUMP IN PLACE, FACE
CLOSED)
20" FIR (1959) N57 1/2°E 50.1' (NOW
28" IN PLACE, FACE CLOSED)
16" FIR (1959) S88°W 40.2' YMLP
ONLY (NOW 16" X 3' HIGH ROTTEN STUB
IN PLACE, YMLP FALLEN OFF)
WPCP NW 1.5' (NOW ROTTEN AND FALLEN
OVER)

REWITNESSED
16" FIR S56°E 32.4' TO ALUMINUM
NAIL IN BT FACE SCRIBED (1/4S14BT)
BTT
WP S76°E 3.40' TO BASE
WP N23°E 2.40' TO BASE

CENTER 1/4 CORNER FOUND
OSBF P/C, 1972 (IN PLACE)
15" FIR N26°E 21.8' (NOW 28" IN PLACE, FACE
CLOSED, YMLP) BTT
6" FIR S66 1/4°E 19.6' (NOW 20" IN PLACE, FACE
CLOSED) BTT
WPCP N50°E 3.0' (IN PLACE)
REWITNESSED
WP S16°E 2.75' TO BASE
WP N25°W 2.65' TO BASE

SURVEY FOR:
STATE OF OREGON - DEPARTMENT OF FORESTRY
SECTION 14, T.23S., R.10W., W.M.
DOUGLAS COUNTY, OREGON
THEODOLITE AND EDM SURVEY BY:
J. MCINTOSH, J. ROSS AND T. VAN VLEET
DRAWN BY: T. VAN VLEET
MARCH 24, 1999
SCALE 1" = 200'

LEGEND

- OSBF P/C = OREGON STATE BOARD OF FORESTRY 1 1/2" X 36" GALVANIZED IRON PIPE WITH 3" BRONZE CAP
- ⊙ = TRUE BLAZED AND POSTED
- ⊙ = ORANGE CARSONITE MARKER AND STATION, CBM-250R LABELED BOUNDARY MARKER
- ⊙ = MONUMENT FOUND
- ⊙ = YELLOW METAL LOCATION POSTER
- WPCP = WHITE PAINTED CEDAR POST
- BTT = BEARING TREE TAG
- CRS = COURSE
- BT = BEARING TREE
- WP = ORANGE CARSONITE MARKER, CBM-250R LABELED WITNESS POST
- #1 () = RECORD BEARING AND DISTANCE IN CHAINS W.H. BYARS, 1879, CONTRACT NO. 292
- #2 () = RECORD BEARING AND DISTANCE IN CHAINS LEVI WALKER, 1906, CONTRACT NO. 763
- #3 () = RECORD BEARING AND DISTANCE IN FEET ARNOLD G. GIBSON, 1972, COUNTY SURVEY NO. M49-20

PURPOSE

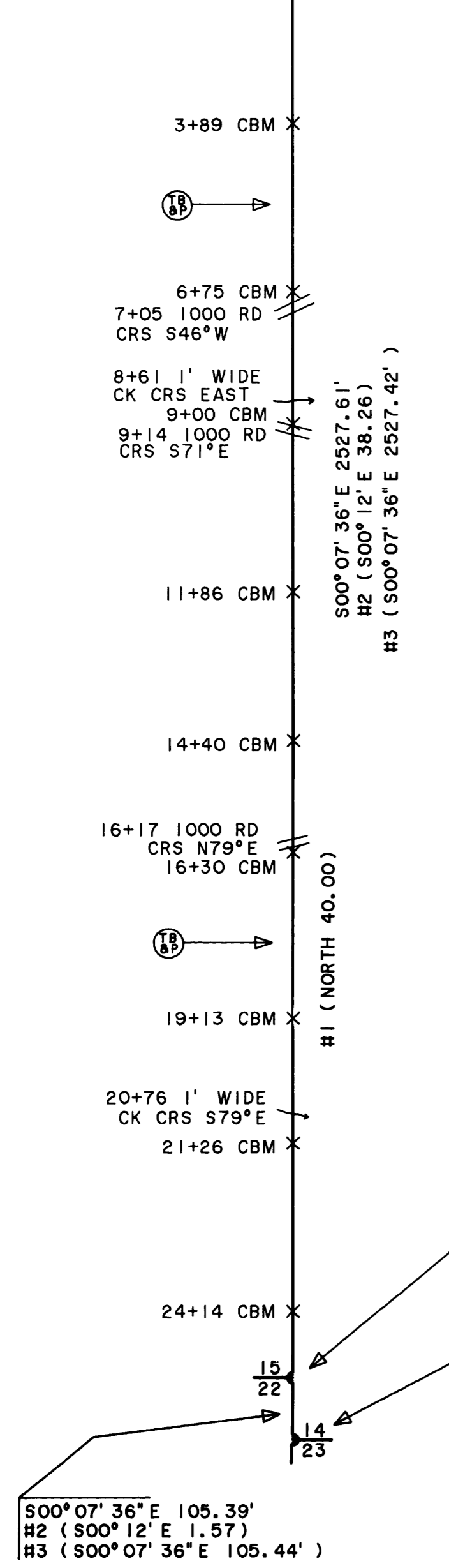
TO SEPARATE STATE FOREST LAND AND PRIVATE LANDS LOCATED IN SECTION 14, TOWNSHIP 23 SOUTH, RANGE 10 WEST, WILLAMETTE MERIDIAN.

PROCEDURE

A RANDOM TRAVERSE USING A WILD T1000 THEODOLITE AND DI 1600 EDM, WAS USED TO CONNECT CONTROLLING CORNERS. BEARINGS AND DISTANCES WERE COMPUTED AND OFFSETS CALCULATED TO POINTS ON TRUE LINE FOR CARSONITE BOUNDARY MARKERS. ALL CORNER ACCESSORIES WERE MARKED AS OUTLINED IN THE "MANUAL OF INSTRUCTIONS FOR THE SURVEY OF PUBLIC LANDS OF THE U.S." 1973. BEARINGS TO ACCESSORIES WERE TAKEN WITH A STAFF COMPASS SET AT 20 1/2° EAST MAGNETIC DECLINATION. DISTANCES WERE MEASURED TO AN ALUMINUM NAIL IN BT FACE. FOR A DETAILED REPORT ON FOUND CORNERS SEE COUNTY RECORDS.

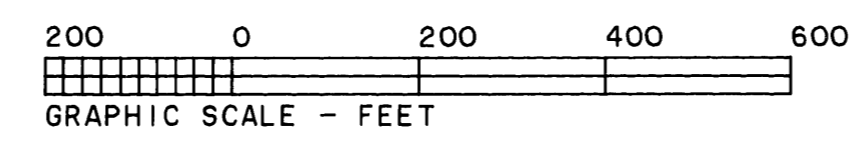
BASIS OF BEARING

ARNOLD G. GIBSON 1972 SURVEY, (COUNTY SURVEY NO. M49-20) FROM THE WEST ONE QUARTER CORNER SECTION 14 ONLY TO THE SECTION CORNER OF SECTIONS 14 AND 23, TOWNSHIP 23 SOUTH, RANGE 10 WEST, WILLAMETTE MERIDIAN.



CLOSING CORNER FOUND
OSBF P/C, 1970 (IN PLACE)
12" HEMLOCK (1906) S85°W 38 LKS (NOW 35" X 5' HIGH
STUMP IN PLACE, FACE CLOSED YMLP)
25" HEMLOCK (1970) N63°W 67.1' (NOW 28" X 5' HIGH
ROTTEN STUMP IN PLACE, SCRIBES VISIBLE)
WPCP (1970) N30°W 2.0' (NOW ROTTEN AND FALLEN OVER)
REWITNESSED
7" ALDER S34°W 24.1' TO ALUMINUM NAIL IN BT FACE
BARK SCRIBED (CCT23SR1OWS22BT) BTT
10" HEMLOCK N56°W 76.3' TO ALUMINUM NAIL IN BT FACE
SCRIBED (T23SR1OWS15CCBT)
WP S74 1/2°W 2.75' TO BASE
WP N05°W 2.50' TO BASE
CLOSING CORNER 0.55' EAST OF TRUELINE

SECTION CORNER FOUND
OSBF P/C, 1970 (IN PLACE)
60" FIR (1879) N30°E 8 LKS (NOW 60" X 2' HIGH
ROTTEN STUMP IN PLACE, SOME AXE WORK VISIBLE)
24" FIR (1879) S45°E 154 LKS (NOW 40" X 2' HIGH
ROTTEN STUMP IN PLACE, OLD AXE WORK VISIBLE)
60" FIR (1879) S45°W 6 LKS, OBLITERATED BY LEVI
WALKER (NOW 55" X 2' HIGH ROTTEN STUMP IN PLACE)
8" FIR (1970) N82°E 11.4' YMLP (NOW 17" IN PLACE,
FACE CLOSED YMLP)
5" FIR (1970) S46°E 68.1' (NOW 15" IN PLACE, BARK
SCRIBES VISIBLE)
WPCP (1970) NORTH 1.3' (NOW ROTTEN AND FALLEN OVER)
REWITNESSED
WP N47°E 3.0' TO BASE
WP S26°E 2.3' TO BASE



MAP FILE M/31-44