

FILED

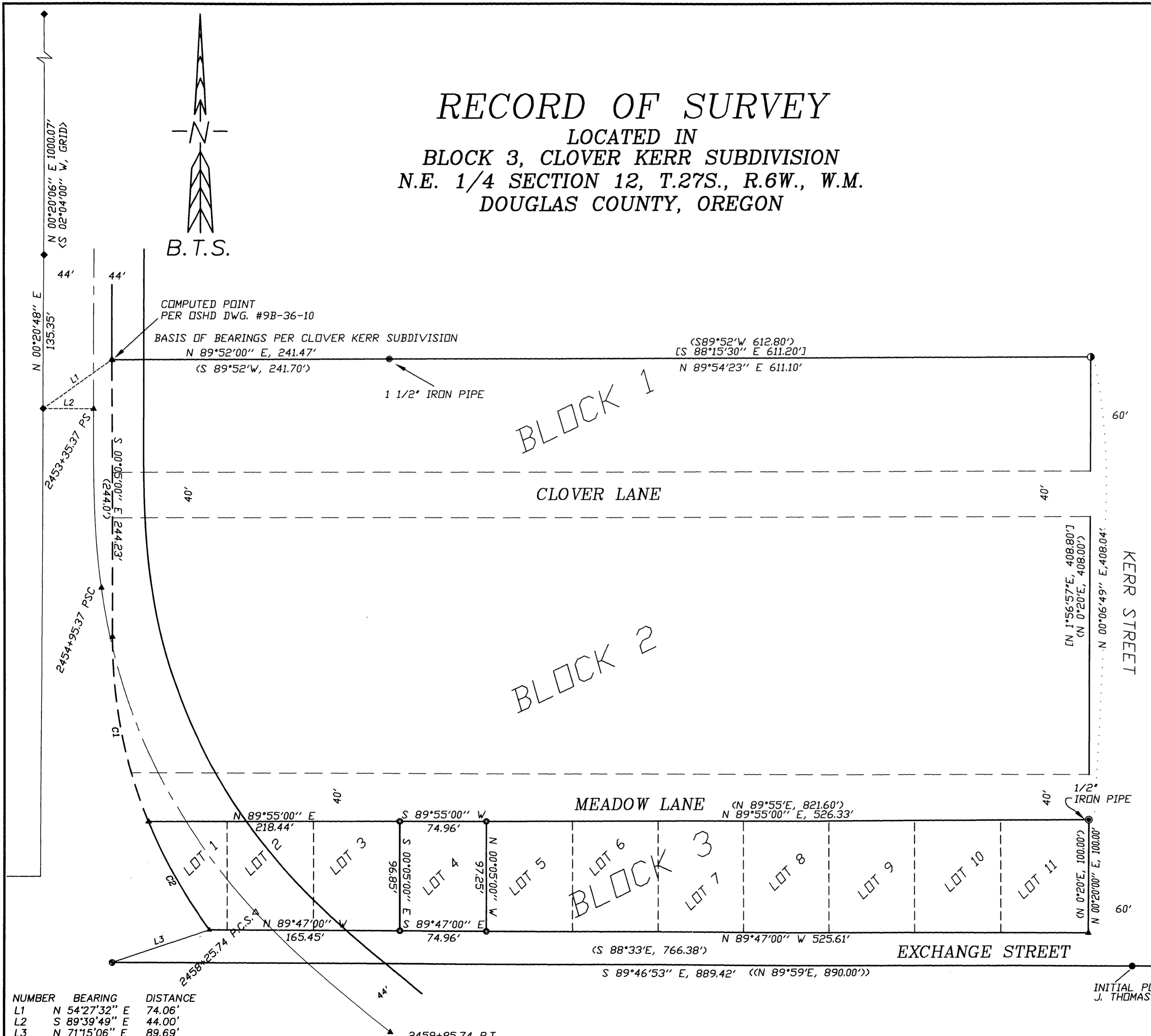
Date: 4/7/1999 By: JP
This survey consists of:
Map: M/31-32
Narrative:
Corner Rpt:

DOUGLAS COUNTY SURVEYOR

RECORD OF SURVEY

LOCATED IN
BLOCK 3, CLOVER KERR SUBDIVISION
N.E. 1/4 SECTION 12, T.27S., R.6W., W.M.
DOUGLAS COUNTY, OREGON

B.T.S.



NARRATIVE:

THE PURPOSE OF THIS SURVEY WAS TO MONUMENT THE CORNERS OF LOT 4, BLOCK 3, CLOVER KERR SUBDIVISION. THE SURVEY WAS CONTROLLED BY THE NE CORNER OF BLOCK 3, A 1 1/2" IRON PIPE ON THE NORTH LINE OF BLOCK 1 AND THE NW CORNER OF BLOCK 1 AS COMPUTED FROM OSHD DWG# 9B-36-10 COORDINATES. THE SE CORNER OF BLOCK 3 WAS COMPUTED AT PLAT BEARING AND DISTANCE FROM THE NE CORNER OF BLOCK 3. THE SOUTH AND WEST BOUNDARY OF CLOVER KERR SUBDIVISION WERE THEN COMPUTED BY HOLDING PLAT BEARINGS BETWEEN THE SE CORNER AND NW SUBDIVISION CORNERS. THE PLAT BEARING OF S 88°33'E ON THE SOUTH LINE OF BLOCK 3 WAS FOUND TO BE IN ERROR. I COMPUTED A BEARING OF S 89°47'E FOR THIS LINE FROM BLOCK 3 PLAT DISTANCES. LOT 4 WAS THEN COMPUTED AT PROPORTIONAL DISTANCES WITHIN BLOCK 3 AS SHOWN ON THE FACE OF THE MAP. THE CENTERLINE AND RIGHT OF WAY LINE OF N.E STEPHENS ST. ARE SHOWN FOR INFORMATIONAL PURPOSES ONLY AND ARE NOT PART OF THIS SURVEY.

THIS SURVEY WAS PERFORMED BY MATT DIXON, ADAM DEGROOT AND AARON FANNING USING A SOKKIA SET 5A WITH COMPUTATIONS BY KRIS DEGROOT AND DRAFTING BY BILL WARREN.

LEGEND:

- ⊙ = SET 5/8" X 30" IRON ROD w/PLASTIC CAP MK'D. "BTS ENG-SURV"
- ◆ = FOUND 5/8" IRON ROD PER OSHD DWG. #9B-36-10
- = FOUND 2" IRON PIPE
- ⊙ = FOUND AS NOTED PER CLOVER KERR SUBDIVISION (VOL. 6. PG. 29)
- ⊙ = FOUND 5/8" IRON ROD PER M 119-72
- ⊙ = FOUND PLOWSHARE- SW CORNER DLC #39 PLSS ID# 039020
- ▲ = COMPUTED POINT NOT SET
- < > = RECORD PER CLOVER KERR SUBDIVISION
- [] = RECORD PER M 119-72
- < > = RECORD PER OSHD DWG.# 9B-36-10
- << >> = RECORD PER M 90-61

NUMBER	BEARING	DISTANCE
L1	N 54°27'32" E	74.06'
L2	S 89°39'49" E	44.00'
L3	N 71°15'06" E	89.69'

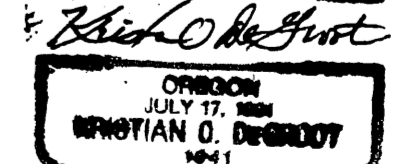
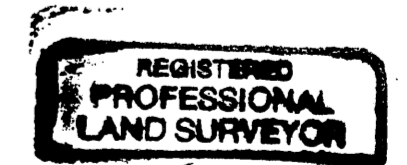
NUMBER	DELTA	RADIUS	ARC	TAN	CHORD	BEARING	CHORD
C1	21°45'49"	440.94	167.49	84.77	S 10°57'54" E	166.48	
C2	14°17'05"	440.94	109.93	55.25	S 28°59'21" E	109.65	

BTS ENGINEERING & SURVEYING, INC.
431 S.E. MAIN ST., ROSEBURG, OR 97470
PHONE (541) 673-0966 FAX (541) 673-0105

SCALE: 1" = 60'
DATE: MARCH, 1999

FOR: JAMES E. SAXON
491 N.E. MEADOW
ROSEBURG, OREGON 97470

JOB #: 98-103
FILE NAME: SAXON.DWG
SHEET 1 OF 1



EXPIRES: 12-31-99