

MAP FILE M131-27

SURVEY FOR W.E. McARTHUR & ASSOCIATES

N.W. 1/4, SEC. 11, T.22S., R.5W., W.M.

DOUGLAS COUNTY, OREGON

MARCH 15, 1999

SCALE 1"=300'

FILED

Date: 3-23-1999 By: JP

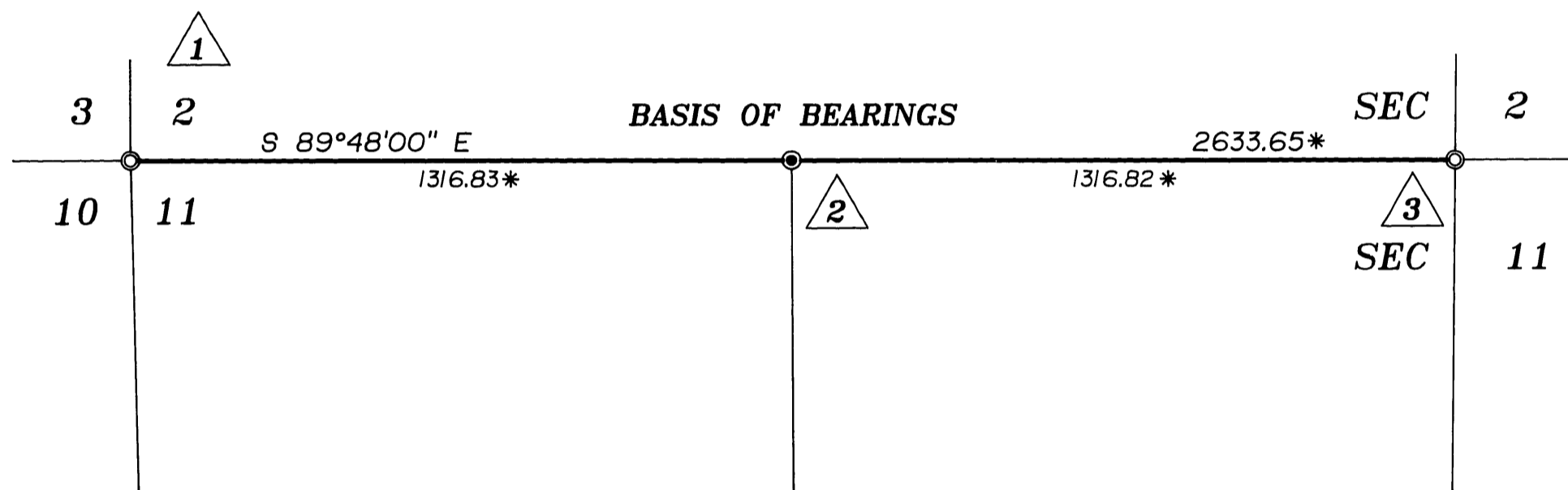
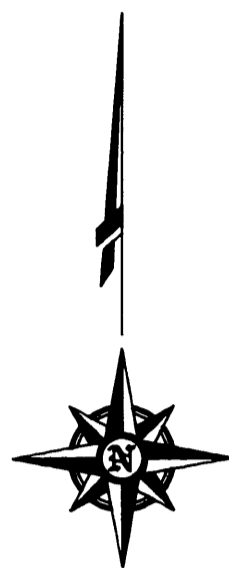
This survey consists of:

Map: M131-27

Narrative: _____

Corner Rpt: _____

DOUGLAS COUNTY SURVEYOR CB



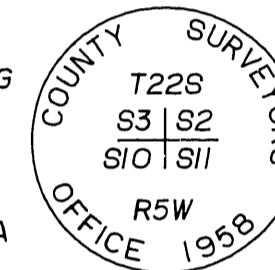
REFERENCES

- DOUGLAS COUNTY SURVEYOR'S MAP FILE No. M 49-12 DATED SEPTEMBER 18, 1972 BY SHANER ENGINEERING.
- G.L.O. SURVEY LINE NOTES FOR THE NORTH LINE OF SECTION 11, T22S, R5W, W.M.

CORNER DESCRIPTIONS



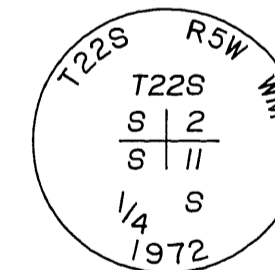
FOUND 2 1/2" DOUGLAS COUNTY SURVEYOR'S OFFICE BRASS CAP IN EAST-WEST WIRE FENCE WITH BEARING TREES PER DOUGLAS COUNTY SURVEYOR'S OFFICE MAP FILE No. M49-12.
NOTE: THE 16" DOUGLAS FIR BEARING TREE BEARING N 13° W 21.2 FEET IS NO LONGER STANDING. A NEIGHBOR REPORTED THAT IT HAD BLOWN OVER IN A WIND STORM.



SET 5/8" X 30" REBAR WITH YELLOW PLASTIC CAP MARKED "BRANCH ENGINEERING".
FROM WHICH:
A FOUND 1" IRON PIPE (FLUSH WITH GROUND) BEARS N 22°57'45" W 0.76' (NO RECORD)
A 12" FIR TREE MARKED "W 1/16 S2 BT" WITH PK NAIL AND BRASS DISK STAMPED "BE" BEARS N 8° E 22.5'
12" FIR TREE MARKED "W 1/16 S11 BT" WITH PK NAIL AND BRASS DISK STAMPED "BE" BEARS S 33° E 12.1'



FOUND 2 1/2" BRASS DISK ON 1" IRON PIPE EXPOSED 12" IN MOUND OF STONE WITH BEARING TREES PER DOUGLAS COUNTY SURVEYOR'S OFFICE MAP FILE No. M49-12



NARRATIVE

THE PURPOSE OF THIS SURVEY WAS TO MONUMENT THE WEST 1/16 CORNER COMMON TO SECTIONS 2 AND 11 OF TOWNSHIP 22 SOUTH, RANGE 5 WEST OF THE WILLAMETTE MERIDIAN.

THE NORTHWEST CORNER AND THE NORTH 1/4 CORNER OF SECTION 11 AS NOTED ON THE SURVEY BY BRUCE A. SHANER DATED SEPTEMBER 18, 1972 IN DOUGLAS COUNTY SURVEYOR'S OFFICE FILE NO. M 49-12 AND WERE FOUND AND ACCEPTED AS BEING SAID CORNERS.

THE WEST 1/16 CORNER COMMON TO SECTIONS 2 AND 11 WAS SET AS PER METHODS OUTLINED IN THE BUREAU OF LAND MANAGEMENT'S MANUAL FOR THE SURVEY OF PUBLIC LANDS.

LEGEND

- FOUND MONUMENT AS NOTED.
- SET 5/8" x 30" REBAR WITH YELLOW PLASTIC CAP MARKED "BRANCH ENGINEERING".
- * DENOTES MEASURED BEARINGS AND/OR DISTANCES ARE EQUAL TO DATA OF RECORD.

ALL DISTANCES SHOWN ARE IN FEET.

REGISTERED
PROFESSIONAL
LAND SURVEYOR

Rex A. Betz

OREGON
JULY 20, 1993
REX A. BETZ
#2606

EXPIRES DEC. 31, 1999



Branch Engineering, Inc.

310 Fifth Street
Springfield, Oregon 97477
(541)746-0637 FAX (541)746-0389

PROJECT No. 99-046

COUNTY SURVEYORS FILE DATA
DO NOT REMOVE FROM OFFICE

MAP FILE M131-27