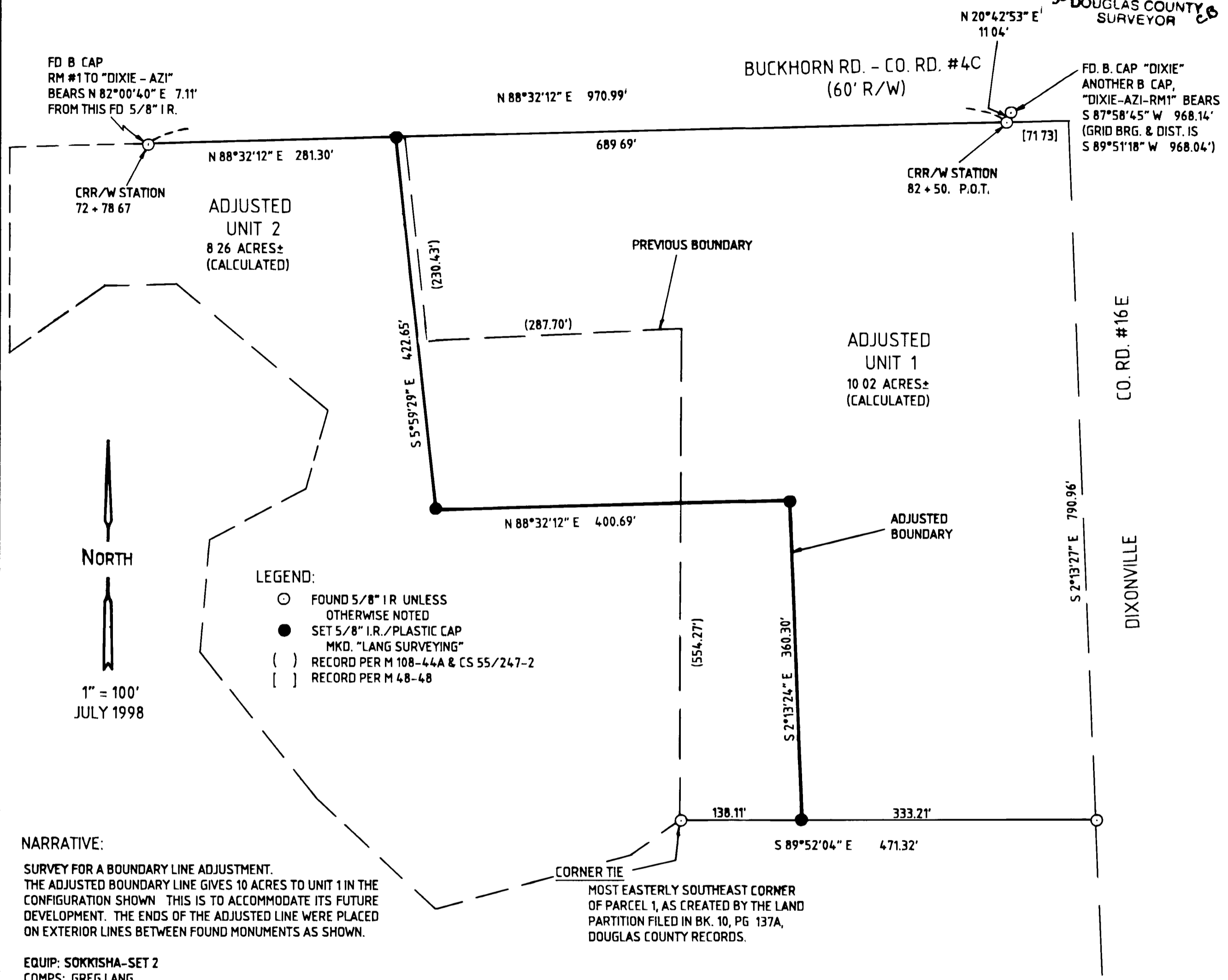


A BOUNDARY LINE ADJUSTMENT SURVEY FOR RICK POLAND IN THE SW 1/4 OF SECTION 24, T 27 S, R 5 W, W. M., DOUGLAS COUNTY, OREGON

Date: 7-22-1998 By: JP
This survey consists of:
Map: M130-7
Narrative: _____
Corner Rpt: _____

DOUGLAS COUNTY SURVEYOR *EB*



NARRATIVE:

SURVEY FOR A BOUNDARY LINE ADJUSTMENT. THE ADJUSTED BOUNDARY LINE GIVES 10 ACRES TO UNIT 1 IN THE CONFIGURATION SHOWN. THIS IS TO ACCOMMODATE ITS FUTURE DEVELOPMENT. THE ENDS OF THE ADJUSTED LINE WERE PLACED ON EXTERIOR LINES BETWEEN FOUND MONUMENTS AS SHOWN.

EQUIP: SOKKISHA-SET 2
COMPS: GREG LANG
DRAFTING: LAURIE LANG

P.D. FILE # 98-179

SIGNATURES

Bob Williams for KLC 7/22/98
DOUGLAS CO. PLANNING DIRECTOR DATE

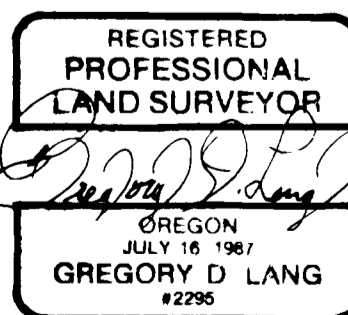
SURVEYED BY: GREG LANG
7550 WILLIS CR. RD
WINSTON, OR 97496
541-679-5542

BASIS OF BEARING

THIS SURVEY IS BASED ON A BEARING ACCEPTED AS TRUE PER THE DOUGLAS COUNTY RECORDS & THE OREGON STATE PLANE CO-ORDINATE SYSTEM (A THETA ANGLE OF - 1°52'33" WAS APPLIED TO THE LINE FROM "DIXIE" TO "DIXIE-AZI-RM1".

DIXIE: Y(N) 573,318.05
X(E) 1,269,432.05

DIXIE-AZI-RM1: Y(N) 573,315.60
X(E) 1,268,464.01



COUNTY SURVEYORS FILE DATA
DO NOT REMOVE FROM OFFICE

EXPIRES 12-31-98