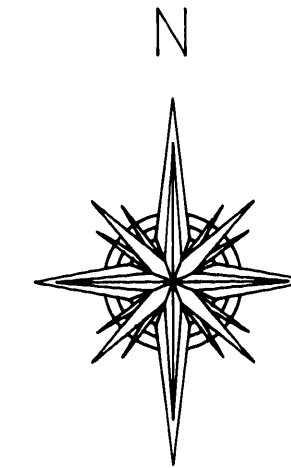




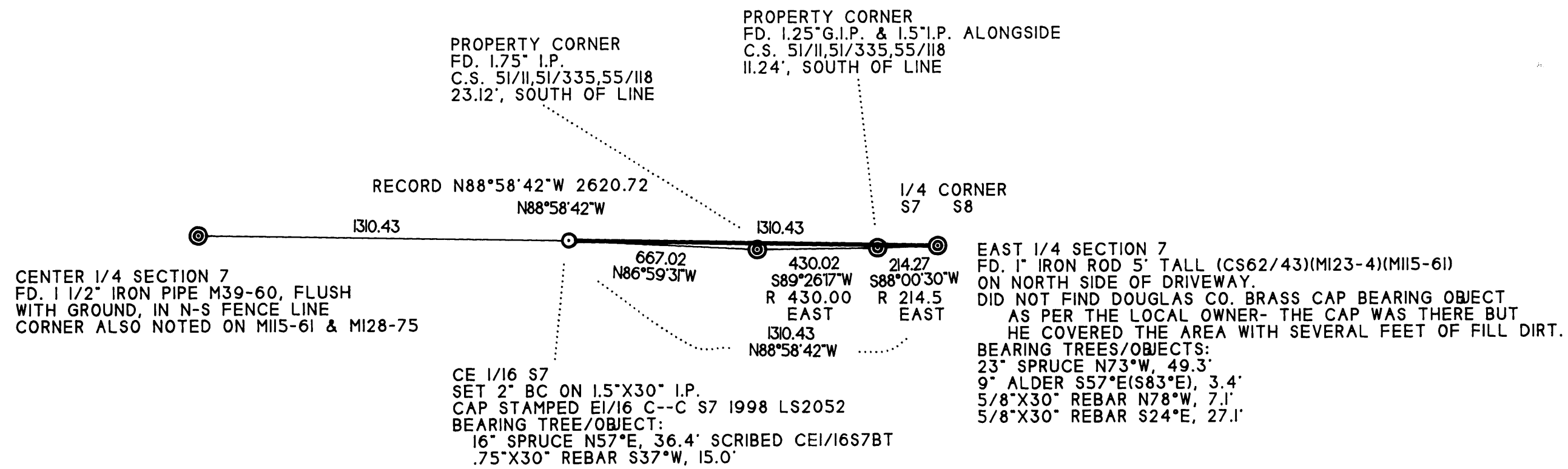
PROPERTY SURVEY FOR MENASHA CORPORATION

LOCATED IN THE NE1/4, SECTION 7, T.22S., R.12W., W.M.

FILED
Date: 10-30-1998 By: JC
This survey consists of:
Map: M130-51
Narrative: _____
Corner Ppt: _____
JC DOUGLAS COUNTY SURVEYOR



SCALE 1" = 400'
OCTOBER 21, 1998



NARRATIVE

THE PURPOSE OF THIS SURVEY WAS TO ESTABLISH MENASHA CORPORATION'S PROPERTY LINE BETWEEN THE EAST 1/4 AND CE1/16 SECTION 7. THE CE1/16 WAS ESTABLISHED DURING THIS SURVEY AT THE MIDPOINT BETWEEN THE EAST 1/4 AND THE CENTER 1/4. BASIS OF BEARING WAS TAKEN FROM MAP M115-61 BETWEEN THE EAST 1/4 AND CENTER 1/4 SECTION 7. EQUIPMENT USED WAS A NIKON DTM A5 TOTAL STATION WITH DATA COLLECTOR. DISTANCE MEASUREMENTS TO BEARING TREES ESTABLISHED DURING THIS SURVEY WERE TO A SPIKE IN SIDE CENTER WITH BEARINGS TAKEN TO THE FACE.

SURVEYED BY:
JOHN MINOR, LS2052
P.O. BOX 588
NORTH BEND, OR 97459

LICENSE RENEWAL 12-31-98

REGISTERED
PROFESSIONAL
LAND SURVEYOR

John Minor

OREGON
JULY 15, 1983
JOHN MINOR
#2052

LEGEND

SURVEYED LINES
PAINTED & BLAZED LINES
FOUND CORNERS
CORNERS SET



COUNTY SURVEYORS FILE DATA
DO NOT REMOVE FROM OFFICE

MAP FILE M130-51

MAP FILE M130-51