

COUNTY SURVEYORS FILE DATA
DO NOT REMOVE FROM OFFICE

MAP OF SURVEY

LOCATED in the SW 1/4 of Section 8, T. 27 S., R. 2 W., W.M. in
Douglas County, Oregon.
September 22, 1998

FILED
Date: 10-22-1998 By: JC
This survey consists of:
Map: M130-47
Narrative:
Corner Rpt:
JC DOUGLAS COUNTY SURVEYOR

MAP FILE M130-47

SURVEYED FOR: BASCO LOGGING
P.O. BOX 131
WINCHESTER, OREGON 97495

SURVEYED BY: DAVID EDWARDS LAND SURVEYING
P.O. BOX 361
OAKLAND, OREGON 97462
PHONE: (541) 459-0512

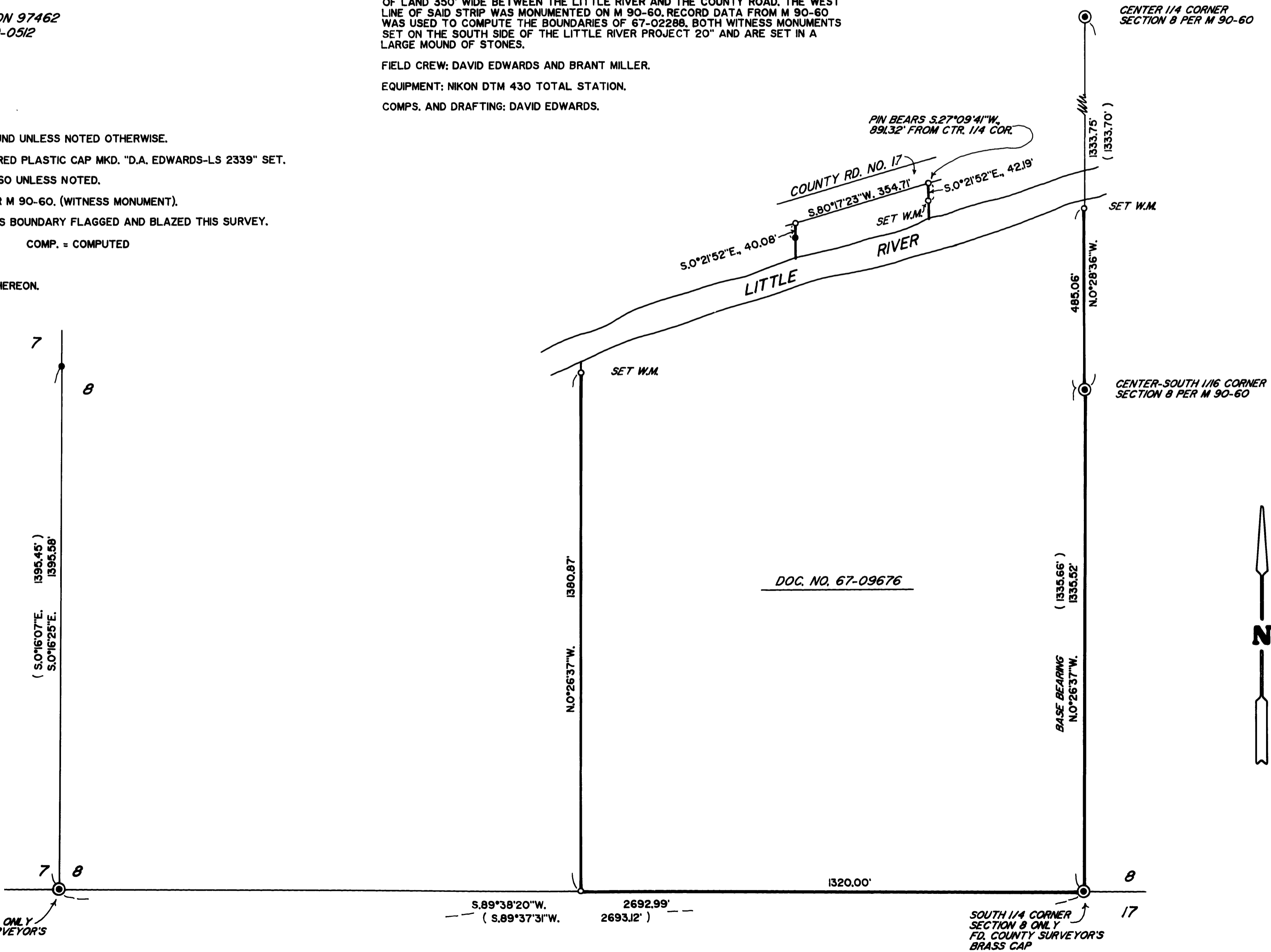
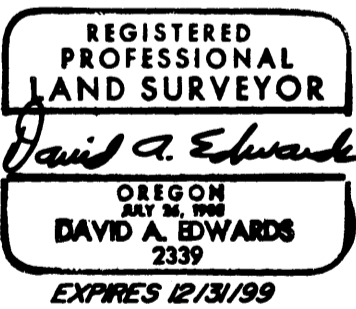
NARRATIVE

THE PURPOSE OF THIS SURVEY IS TO MONUMENT, BLAZE AND FLAG THE BOUNDARIES OF THAT TRACT OF LAND DESCRIBED IN DOCUMENTS NUMBERED 67-02288 AND 67-09676, OFFICIAL RECORDS FOR DOUGLAS COUNTY. CONTROLLING MONUMENTS IN THE SOUTHWEST 1/4 OF SECTION 8 WERE TIED IN AS SHOWN HEREON. DOCUMENT NUMBER 67-09676 AND THE DEED FOR THE WESTERLY ADJOINER BOTH CALL FOR THE WEST LINE OF 67-09676 TO BE 1320 FEET WEST OF AND PARALLEL TO THE "NORTH-SOUTH CENTER LINE" OF SECTION 8. DOC. NO. 67-02288 DESCRIBES A STRIP OF LAND 350' WIDE BETWEEN THE LITTLE RIVER AND THE COUNTY ROAD. THE WEST LINE OF SAID STRIP WAS MONUMENTED ON M 90-60. RECORD DATA FROM M 90-60 WAS USED TO COMPUTE THE BOUNDARIES OF 67-02288. BOTH WITNESS MONUMENTS SET ON THE SOUTH SIDE OF THE LITTLE RIVER PROJECT 20" AND ARE SET IN A LARGE MOUND OF STONES.

FIELD CREW: DAVID EDWARDS AND BRANT MILLER.
EQUIPMENT: NIKON DTM 430 TOTAL STATION.
COMPS. AND DRAFTING: DAVID EDWARDS.

LEGEND

- ⊙ INDICATES 1971 B.L.M. BRASS CAP FOUND UNLESS NOTED OTHERWISE.
 - INDICATES 5/8" X 30" STEEL PIN W/RED PLASTIC CAP MKD. "D.A. EDWARDS-LS 2339" SET.
 - () DENOTES RECORD DATA PER M 90-60 UNLESS NOTED.
 - INDICATES ALUMINUM CAP FOUND PER M 90-60. (WITNESS MONUMENT).
 - INDICATES BOUNDARY FLAGGED AND BLAZED THIS SURVEY.
- W.M. = WITNESS MONUMENT COMP. = COMPUTED
SCALE: 1" = 200'
BASIS OF BEARINGS: M 90-60 AS SHOWN HEREON.



CORNER TO SECTIONS 7 & 8 ONLY
FD. COUNTY SURVEYOR'S BRASS CAP

SOUTH 1/4 CORNER SECTION 8 ONLY
FD. COUNTY SURVEYOR'S BRASS CAP

MAP FILE M130-47