

MAP FILE M/30-35

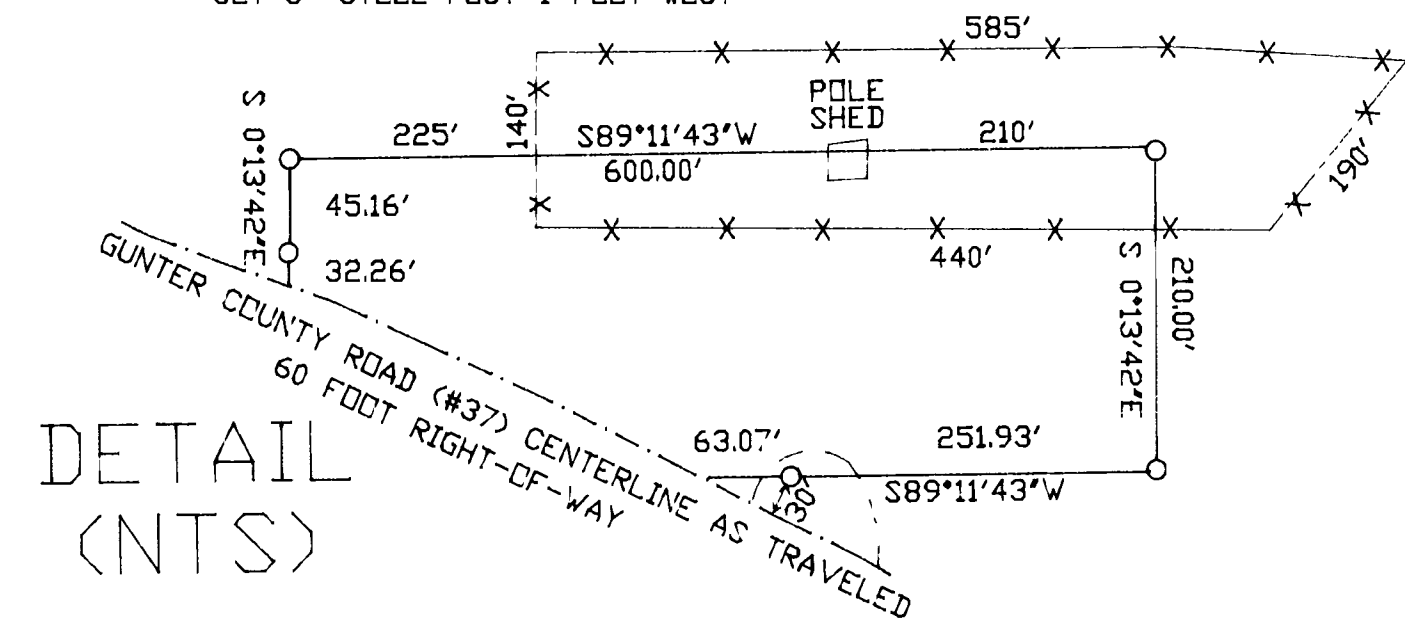
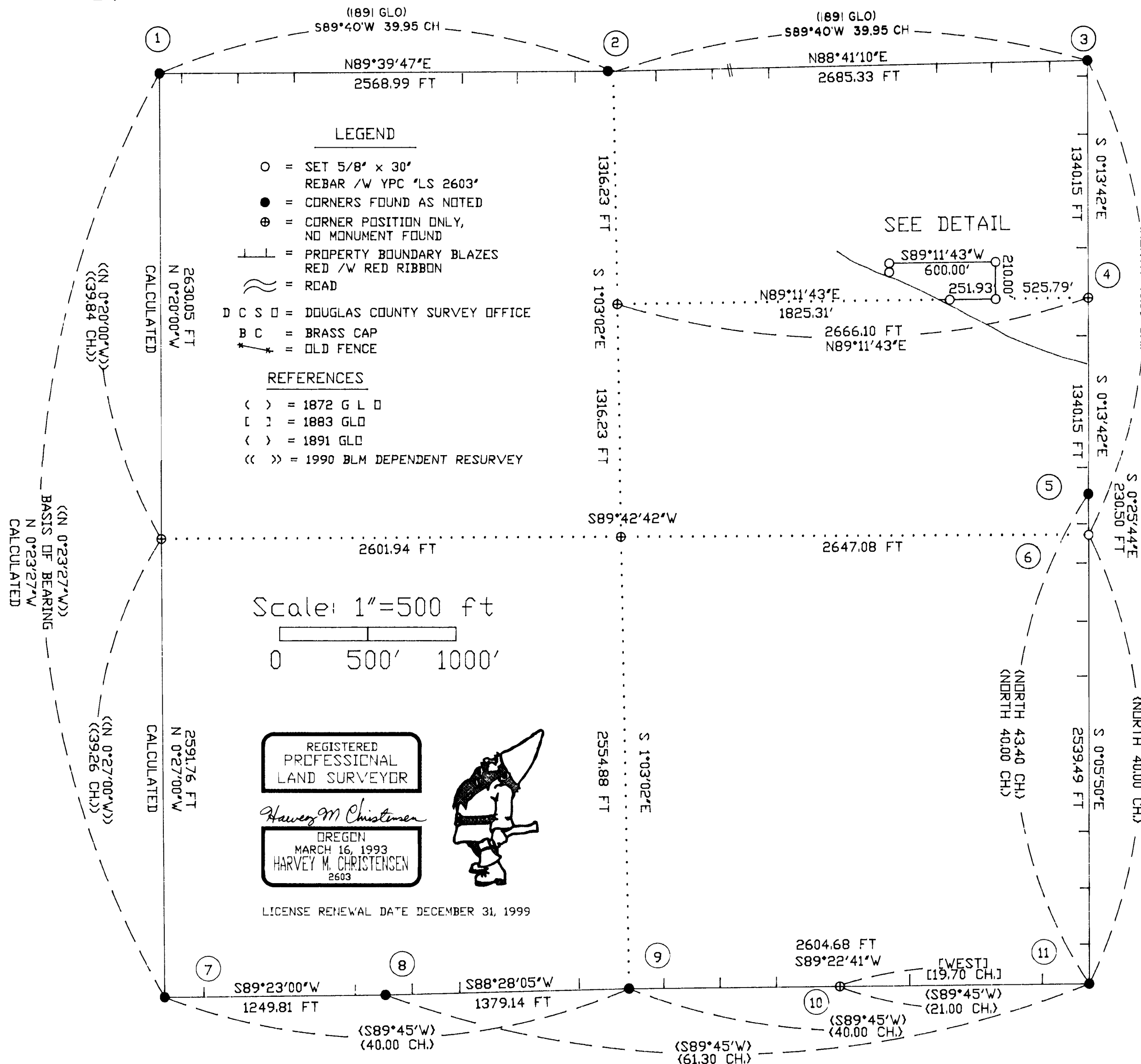
NARRATIVE

THE PURPOSE OF THIS SURVEY WAS TO MARK THE PROPERTY LINES BETWEEN SENECA JONES TIMBER CO. AND ADJOINING LANDOWNERS IN SECTION 36, T20S, R7W, W.M., DOUGLAS COUNTY, OREGON. ALSO THE EAST 1/4 CORNER OF SAID SECTION 36 WAS SET AT RECORD DISTANCE INTERSECTION FROM THE ORIGINAL 1891 GLO CORNER BEARING TREES (STUMPS). THEY WERE RECOVERED WITH NO SCRIBING REMAINING BUT AT NEAR RECORD DISTANCE FROM THE ORIGINAL WEST 1/4 CORNER OF SECTION 31, T20S, R6W, W.M. AND WITH A GOOD PATTERN. A METES AND BOUNDS DESCRIPTION WAS MONUMENTED IN THE NE 1/4 OF THE NE 1/4 AS PER PARCEL 13B, BOOK 1200, PAGE 774, DOUGLAS COUNTY DEEDS & RECORDS. A NIKON A20LG TOTAL STATION WAS USED TO MEASURE ANGLES AND DISTANCES. BEARING TREES ON THIS SURVEY WERE REFERENCED WITH A HAND COMPASS AND 50' DIAMETER TAPE TO SIDE CENTER. BEARINGS ARE BASED ON THE WEST LINE BETWEEN SECTIONS 36 AND 35 AS PER BLM DEPENDENT RESURVEY, 1990 (CALCULATED).

CORNER NOTES

- (1) SECTION CORNER SECTIONS 26-25/35-36
FOUND: 1958 D C S O 2 1/2' B C, 1.2 FT. ABOVE GROUND
BTS: 7' D. FIR, N83E, 17.8 FT., HEALED FACE
8' D. FIR, S51E, 14.5 FT.,
7' D. FIR, S58W, 18.5 FT.,
5' D. FIR, N27W, 8.9 FT.,
- (2) WITNESS CORNER, 1/4 CORNER SECTIONS 25/36
FOUND: 1962 D C S O 2.75' B C, .4 FT. ABOVE GROUND
BTS: 17' D. FIR, N87W, 45.2 FT., HEALED FACE
23' D. FIR, S55W, 33.7 FT., HEALED FACE
SET 5' STEEL POST 1 FOOT WEST
NOTE: WC IS LOCATED 8 FT WEST OF RIVER & 30 FT. WEST OF 1/4 CORNER.
- (3) SECTION CORNER SECTIONS 36/25 ONLY
FOUND: HAINES 'T' POST WITH CAP 1.2 FT. ABOVE GROUND
BTS: 21' D. FIR, S71W, 66.3 FT., OLD BLAZE VISIBLE
55' D. FIR, N16W, 30.0 FT., VISIBLE BARK SCRIBING
W/ HAINES WASHER UNDERNEATH
15' D. FIR, N54E, 35.0 FT., BLAZED & SCRIBED 'X' 'BT'
7' D. FIR, S30E, 13.7 FT.,
SET 5' STEEL POST 1 FOOT WEST
- (4) NORTH 1/16 CORNER SECTION 36 ONLY
CALCULATED POSITION ONLY (MIDPOINT) - NO CORNER SET
USED FOR DESCRIPTION ONLY
- (5) WEST 1/4 CORNER SECTION 31 ONLY
FOUND: 1962 D C S O 2.5' B C, 1.1 FT. ABOVE GROUND
BTS: 5' D. FIR, N73W, 30.6 FT., BLAZED & SCRIBED 'X' 'BT'
8' D. FIR, S14W, 21.5 FT.,
8' D. FIR, N34E, 23.2 FT., BLAZED & SCRIBED '1/4 S31 BT'
9' D. FIR, S15E, 28.8 FT.,
20' D. FIR, S50E, 35.5 FT., STUMP W/ TIN CAP W/ OLD BLAZE VISIBLE
33' D. FIR, N55E, 13.2 FT., STUMP W/ TIN CAP W/ 4C' VISIBLE FACING SOUTH
SET 5' STEEL POST 1 FOOT NORTH
- (6) EAST 1/4 CORNER SECTION 36 ONLY
SET: 5/8" X 30' REBAR /W YPC 'LS 2603'
BTS: 12' D. FIR, S13E, 30.4 FT., BLAZED & SCRIBED 'X' 'BT'
10' CASCARA, N51E, 26.9 FT.,
7' D. FIR, S87W, 24.2 FT., '1/4 SEC 36 BT'
8' D. FIR, N55W, 32.6 FT.,
23' D. FIR, N5E, 11.2 FT. (N21E 17 LKS), HOLLOW STUMP, NO SCRIBING
24' D. FIR, N54E, 23.7 FT. (N48W 36 LKS), HOLLOW STUMP, NO SCRIBING
SET 5' STEEL POST 1 FOOT NORTH
- (7) SECTION CORNER SECTIONS 35-36
FOUND: 1990 2.5' BLM BC, IN CUT BANK OF ROAD
BTS: 8' D. FIR, N59E, 31.0 FT., HEALED FACE
10' D. FIR, N67W, 6.6 FT.,
SET 5' STEEL POST 1 FOOT EAST
- (8) SECTION CORNER SECTIONS 1-2
FOUND: HAINES 'T' POST 0.8 FT. ABOVE GROUND
BTS: 18' D. FIR, S62W, 67.8 FT., STUMP W/ TIN CAP, HEALED FACE
30' D. FIR, S06E, 27.7 FT., OPEN W/ SCRIBING VISIBLE
16' D. FIR, N68E, 41.2 FT., BLAZED & SCRIBED 'X' 'BT'
7' D. FIR, S82E, 32.0 FT., T21S R7W S1 BT'
19' R. ALDER, N78W, 29.8 FT., BARK SCRIBED 'X' 'BT'
SET 5' STEEL POST 1 FOOT WEST
- (9) SOUTH 1/4 CORNER 36
FOUND: HAINES 'T' POST WITH CAP 1.0 FT. ABOVE GROUND
BTS: 36' D. FIR, N12W, 13.2 FT., STUMP W/ OLD SCRIBING
36' D. FIR, N38E, 27.2 FT.,
11' D. FIR, N71W, 13.3 FT., BLAZED & SCRIBED '1/4 S36 BT'
9' D. FIR, N16E, 17.8 FT.,
14' D. FIR, S12E, 12.7 FT., 'X' 'BT'
8' D. FIR, S35W, 15.7 FT.,
SET 5' STEEL POST 1 FOOT WEST
- (10) NORTH 1/4 CORNER SECTION 1 ONLY
FOUND: SEARCHED FOR, NOT FOUND.
- (11) SECTION CORNER SECTIONS 36-31 ONLY
FOUND: HAINES 'T' POST 0.3 FT. BELOW GROUND, FLOOD AREA
BTS: 44' D. FIR, N57W, 91.9 FT., 7 FT. STUMP W/ TIN CAP, BARK SCRIBED
60' D. FIR, N41.5E, 20.1 FT.,
COPPER WASHER, S68W, 95.7 FT., 'X' ERODED OUT OF VERTICAL SAND STONE
SET 5' STEEL POST 1 FOOT WEST

SURVEY FOR
SENECA JONES TIMBER CO
SECTION 36, T20S, R7W, W.M.
DOUGLAS COUNTY, OREGON
SEPTEMBER 10, 1998



NORTHWEST TIMBERLAND CONSULTING, INC.
4680 BRIARS ST. - EUGENE, OR 97404-1113
PHONE OR FAX (541) 461-4076

MAP FILE M/30-35