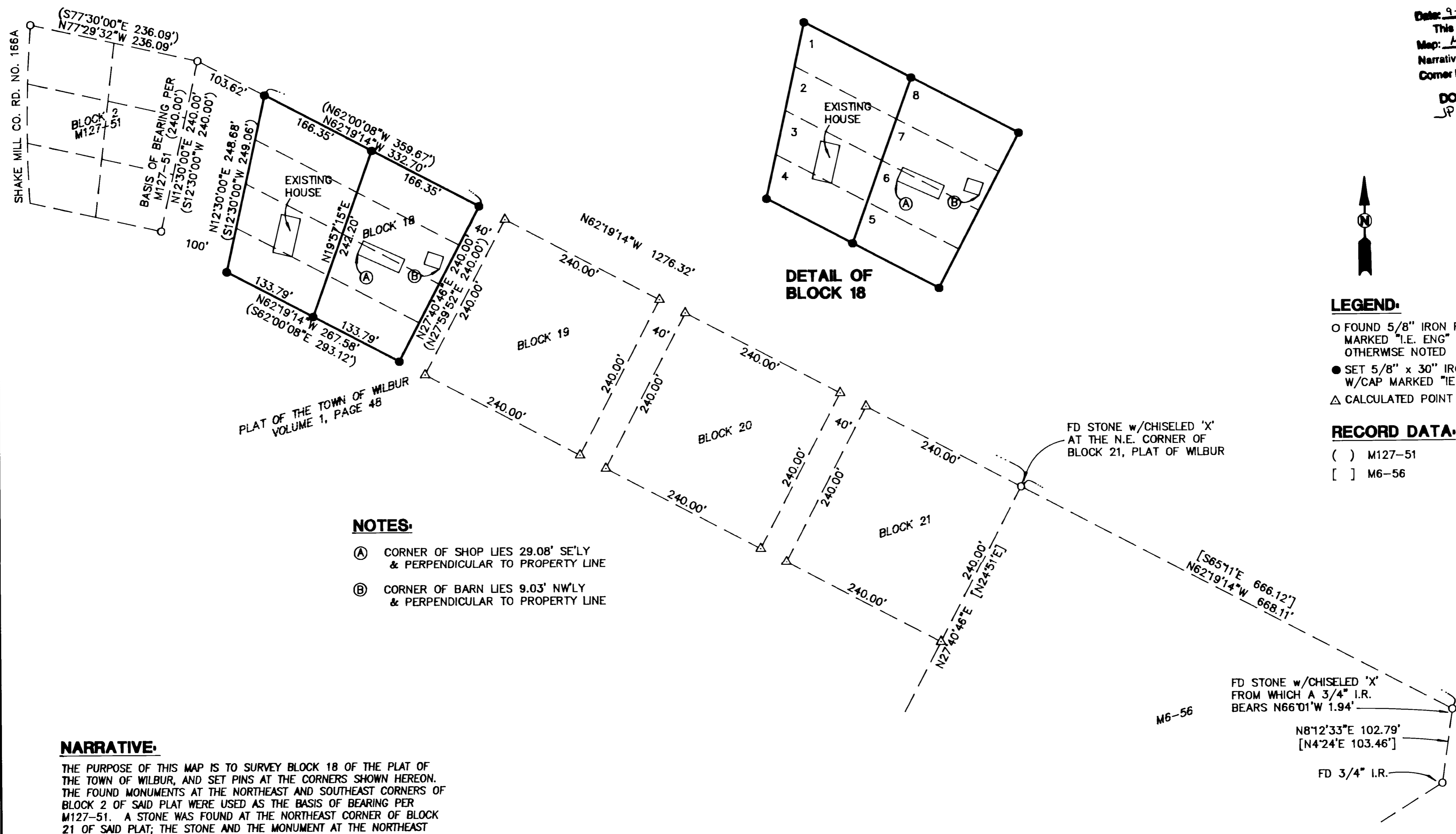


FILED
Date: 9-2-1998 By: JC
This survey consists of
Map: M130-24
Narrative: _____
Corner Rpt: _____
DOUGLAS COUNTY SURVEYOR
JP CB

MAP FILE M130-24



- NOTES:**
- (A) CORNER OF SHOP LIES 29.08' SE'LY & PERPENDICULAR TO PROPERTY LINE
 - (B) CORNER OF BARN LIES 9.03' NW'LY & PERPENDICULAR TO PROPERTY LINE

NARRATIVE:

THE PURPOSE OF THIS MAP IS TO SURVEY BLOCK 18 OF THE PLAT OF THE TOWN OF WILBUR, AND SET PINS AT THE CORNERS SHOWN HEREON. THE FOUND MONUMENTS AT THE NORTHEAST AND SOUTHEAST CORNERS OF BLOCK 2 OF SAID PLAT WERE USED AS THE BASIS OF BEARING PER M127-51. A STONE WAS FOUND AT THE NORTHEAST CORNER OF BLOCK 21 OF SAID PLAT; THE STONE AND THE MONUMENT AT THE NORTHEAST CORNER OF BLOCK 2 WERE HELD AS THE NORTH LINES OF BLOCKS 18, 19, 20 AND 21. THE BLOCKS AND RIGHT-OF-WAY WIDTHS WERE ESTABLISHED UNDER THE SAME PRINCIPLE USED IN M127-51 (240-FOOT WIDE BLOCKS AND 40-FOOT RIGHTS-OF-WAY). THE EAST LINE OF BLOCK 18 WAS ESTABLISHED USING THE BLOCK AND RIGHT-OF-WAY WIDTHS FROM THE FOUND STONE AND HOLDING 90° FROM THE ESTABLISHED NORTH LINE OF THE BLOCKS. THE RIGHT-OF-WAY BETWEEN BLOCKS 2 AND 18 WAS HELD AT 100 FEET, WHICH ESTABLISHED THE WEST LINE OF BLOCK 18. THE SOUTH LINE OF BLOCK 18 WAS DETERMINED BY HOLDING PARALLEL TO THE NORTH LINE OF THE BLOCKS 240 FEET. THE NORTHEAST CORNER OF LOT 1, BLOCK 18 AND THE SOUTHEAST CORNER OF LOT 4, BLOCK 18 WERE COMPUTED BY SPLITTING THE NORTH AND SOUTH LINES RESPECTIVELY.

FIELD CREW: RYAN PALMER, DEREK FEIGEL
EQUIPMENT: NIKON TOTAL STATION
CALCULATIONS: DON BENTZ AND WENDELL HARNESS
DRAFTING: TRAVIS ROBINSON

SURVEY

IN THE NW 1/4 OF SEC. 18, T26S, R5W, W.M.
DOUGLAS COUNTY, OREGON

REGISTERED PROFESSIONAL LAND SURVEYOR

Douglas J. Jacobson
OREGON
JULY 25, 1985
DOUGLAS J. JACOBSON
2710

EXPIRES: 6/30/99

SURVEYED FOR:
HOGE HICKMAN
P.O. BOX 779
SUTHERLIN, OR 97479

SURVEYED BY:
i.e.
ENGINEERING
741 S.E. Jackson Street
Roseburg, Oregon 97470
PHONE (541) 673-0166
FAX (541) 440-9392

SCALE: 1" = 100' DATE: AUGUST 1998 JOB NO. 499-05 PAGE: 1 OF 1

MAP FILE M130-24