

MAP FILE M 130-13

FILED  
Date: 7-29-1998 By: JP  
This survey consists of:  
Map: M 130-13  
Narrative:  
Corner Rpt:

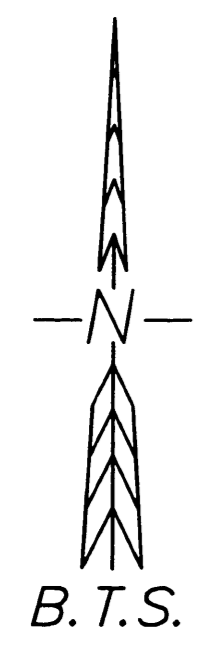
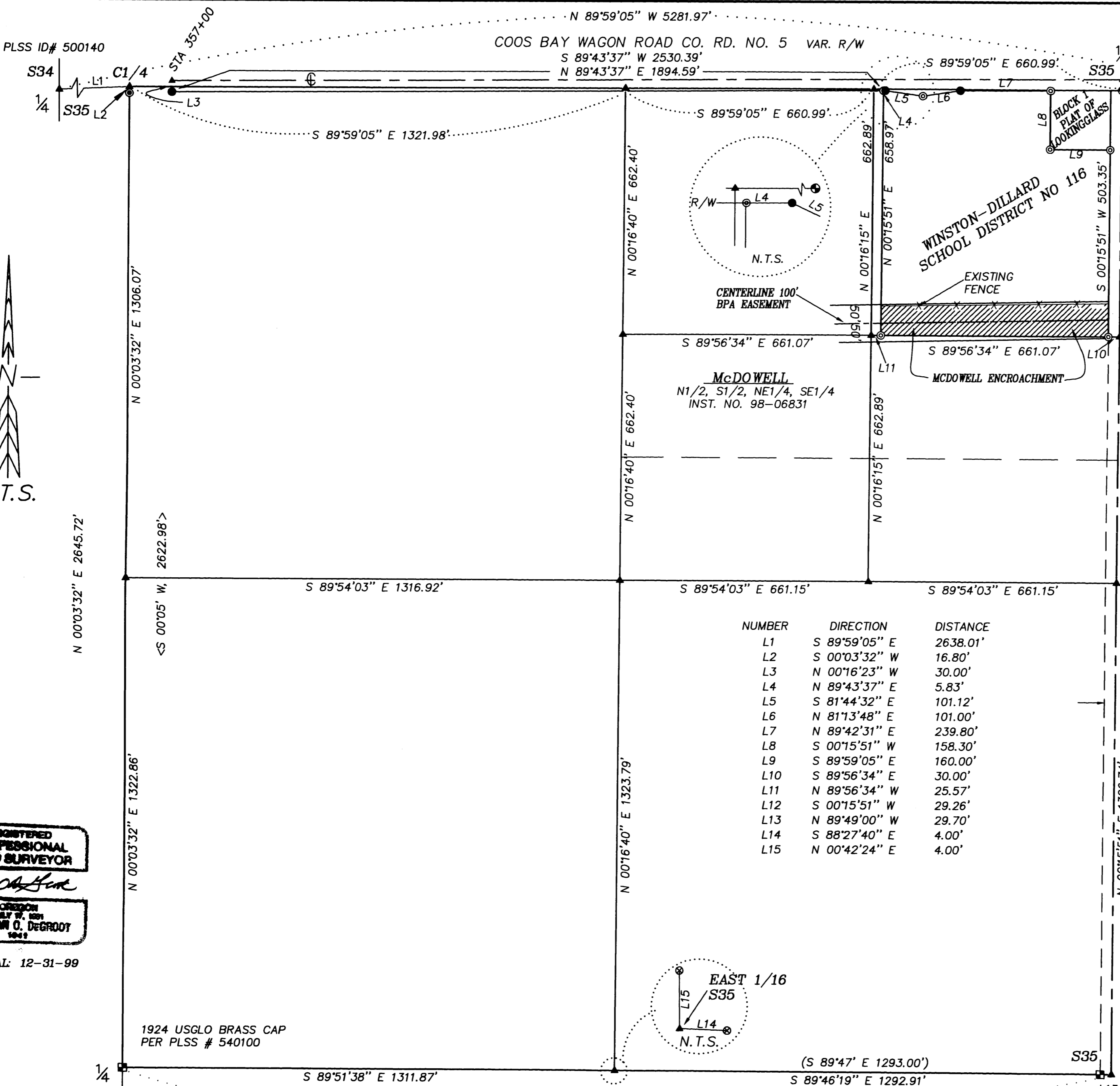
DOUGLAS COUNTY  
SURVEYOR

**RECORD OF SURVEY**  
LOCATED IN THE SE 1/4 OF  
SECTION 35, T.27S., R.7W., W.M.  
DOUGLAS COUNTY, OREGON

**NARRATIVE:**  
THE PURPOSE OF THIS SURVEY WAS TO MONUMENT THE LOOKINGGLASS SCHOOL PROPERTY AND LOCATE AN ENCROACHMENT ALONG THE SOUTH LINE. THE SOUTH LINE WAS CONTROLLED BY THE SOUTH LINE OF THE NE 1/4, NE 1/4, SE 1/4 OF SECTION 35. THE BOUNDARIES OF THE SE 1/4 OF SECTION 35 WERE CONTROLLED BY MONUMENTS FOUND AT THE SOUTH 1/4 AND EAST 1/4 OF SECTION 35 AND A WITNESS CORNER AT THE SE CORNER OF SECTION 35. THE WEST 1/4 WAS COMPUTED FROM TIES PER THE 1969 PLANS FOR COUNTY ROAD NO. 5. THE CENTER 1/4 WAS THEN COMPUTED AT THE INTERSECTION OF THE EAST-WEST CENTERLINE OF SECTION 35 AND THE WEST LINE OF CS 55/202-3 AND CS 58/134-6. THE EAST 1/16 CORNER ON THE SOUTH LINE OF SECTION 35 WAS COMPUTED FROM THE REFERENCE MONUMENTS FOUND PER M 89-47. USING THESE CORNER POSITIONS I SUBDIVIDED THE SE 1/4 OF SECTION 35 AS SHOWN ON THE FACE OF THE MAP. THE SOUTHWEST CORNER AND WEST LINE WERE ESTABLISHED AT DEED DISTANCES PER VOL 228/PAGE 973. THE NORTH LINE WAS CONTROLLED BY MONUMENTS FOUND ON THE SOUTHERLY RIGHT OF WAY LINE OF COUNTY ROAD NO. 5 PER THE 1969 PLANS. THE EAST LINE WAS ESTABLISHED ON THE WESTERLY RIGHT OF WAY LINE OF COUNTY ROAD NO. 47 COMPUTED 30 FEET WESTERLY AND PARALLEL TO THE EAST LINE OF SECTION 35. BLOCK 1 OF THE PLAT OF LOOKING GLASS WAS COMPUTED AT PLAT DIMENSIONS FROM THE EAST 1/4 CORNER OF SECTION 35. THE SURVEY WAS COMPLETED BY MATT DIXON AND ADAM DEGROOT USING A SOKKIA SET 5A TOTAL STATION WITH COMPUTATIONS BY KRIS DEGROOT AND DRAFTING BY BILL WARREN.

- LEGEND:**
- ⊙ = SET 5/8" x 30" IRON ROD w/PLASTIC CAP MK'D. "BTS ENG-SURV"
  - = FOUND 5/8" IRON ROD PER 1969 PLANS COUNTY ROAD NO.5
  - ⊙ = FOUND 5/8" IRON ROD PER CS 55/202-3
  - = FOUND DCSO BCIP AS NOTED
  - ⊙ = FOUND USGLO BCIP AS NOTED
  - ▲ = COMPUTED POINT NOT SET
  - ⊙ = FOUND 5/8" IRON ROD PER M 89-47
  - x — = EXISTING FENCE
  - ( ) = RECORD PER M 89-47
  - [ ] = RECORD PER 1924 USGLO RESURVEY
  - < > = RECORD PER CS 55/202-3

NUMBER	DIRECTION	DISTANCE
L1	S 89°59'05" E	2638.01'
L2	S 00°03'32" W	16.80'
L3	N 00°16'23" W	30.00'
L4	N 89°43'37" E	5.83'
L5	S 81°44'32" E	101.12'
L6	N 81°13'48" E	101.00'
L7	N 89°42'31" E	239.80'
L8	S 00°15'51" W	158.30'
L9	S 89°59'05" E	160.00'
L10	S 89°56'34" E	30.00'
L11	N 89°56'34" W	25.57'
L12	S 00°15'51" W	29.26'
L13	N 89°49'00" W	29.70'
L14	S 88°27'40" E	4.00'
L15	N 00°42'24" E	4.00'



REGISTERED  
PROFESSIONAL  
LAND SURVEYOR

OREGON  
JULY 27, 1991  
KRISTIAN O. DEGROOT  
1981

RENEWAL: 12-31-99

1924 USGLO BRASS CAP  
PER PLSS # 540100

[N 89°49'W, 39.42 CH.]  
BASIS OF BEARING PER 1924 USGLO  
N 89°49'00" W 2604.77'

WITNESS CORNER  
1924 USGLO BRASS CAP  
PER PLSS ID# 600100

**BTS ENGINEERING & SURVEYING, INC.**  
431 S.E. MAIN ST., ROSEBURG, OR 97470  
PHONE (541) 673-0966 FAX (541) 673-0105

SCALE: 1" = 200'  
DATE: JULY, 1998

FOR: WINSTON-DILLARD SCHOOL DISTRICT  
231 DYKE ROAD  
WINSTON, OREGON 97496

JOB #: 98-064  
FILE: LOOKGLAS.DWG  
SHEET 1 OF 1

MAP FILE M 130-13